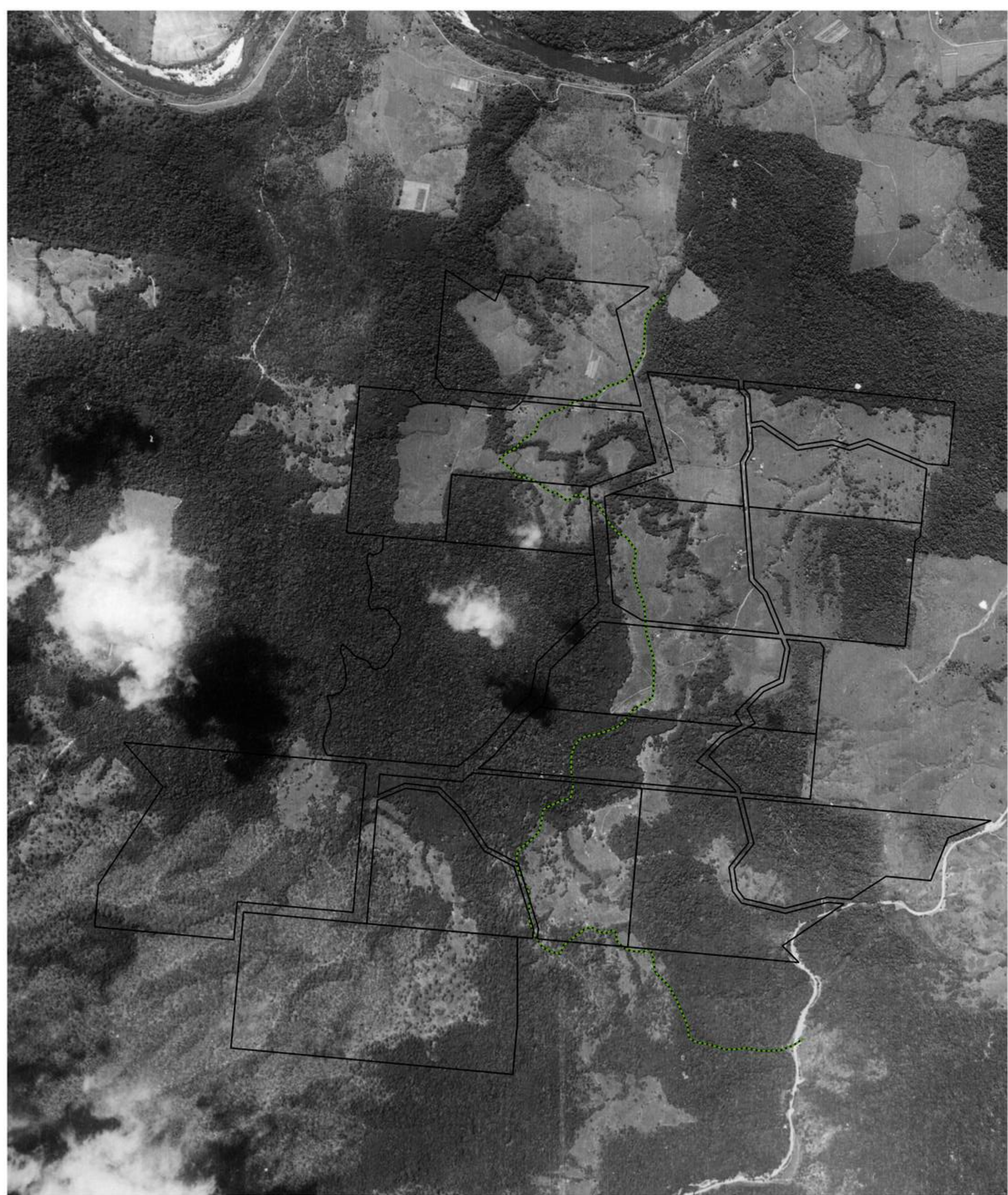


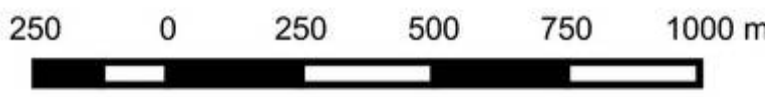
**ATTACHMENT M:  
HISTORICAL MAPPING**

**- Astrebla Ecological Services**





**Reevers and Ocean - Myola landholdings - 1942 aerial image**

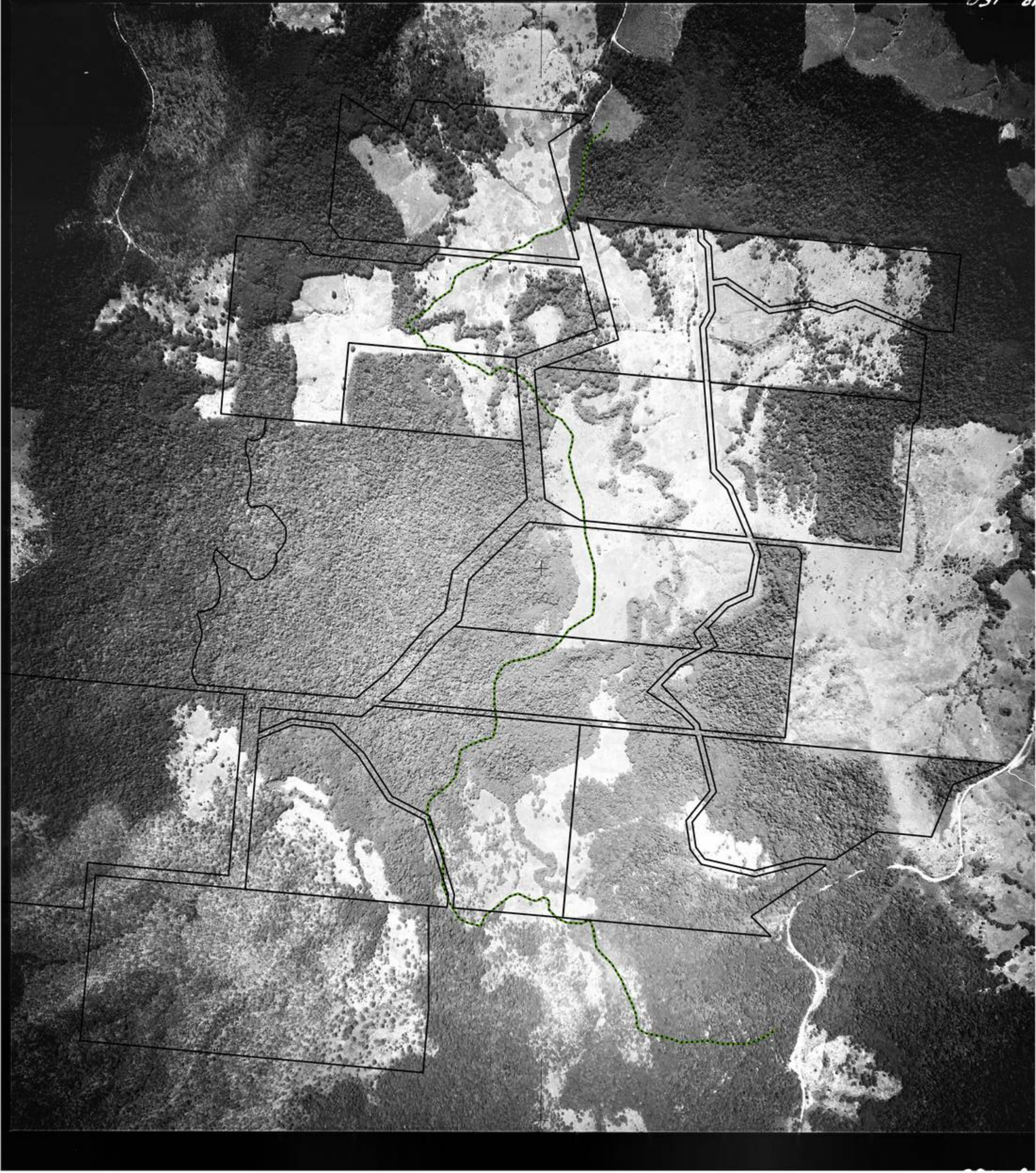


**Legend**

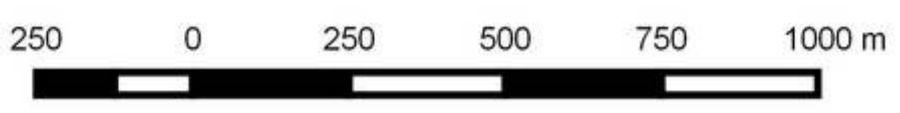
- Myola Project Lots
- Main north-south track







**Reevers and Ocean - Myola landholdings - 1951 aerial**



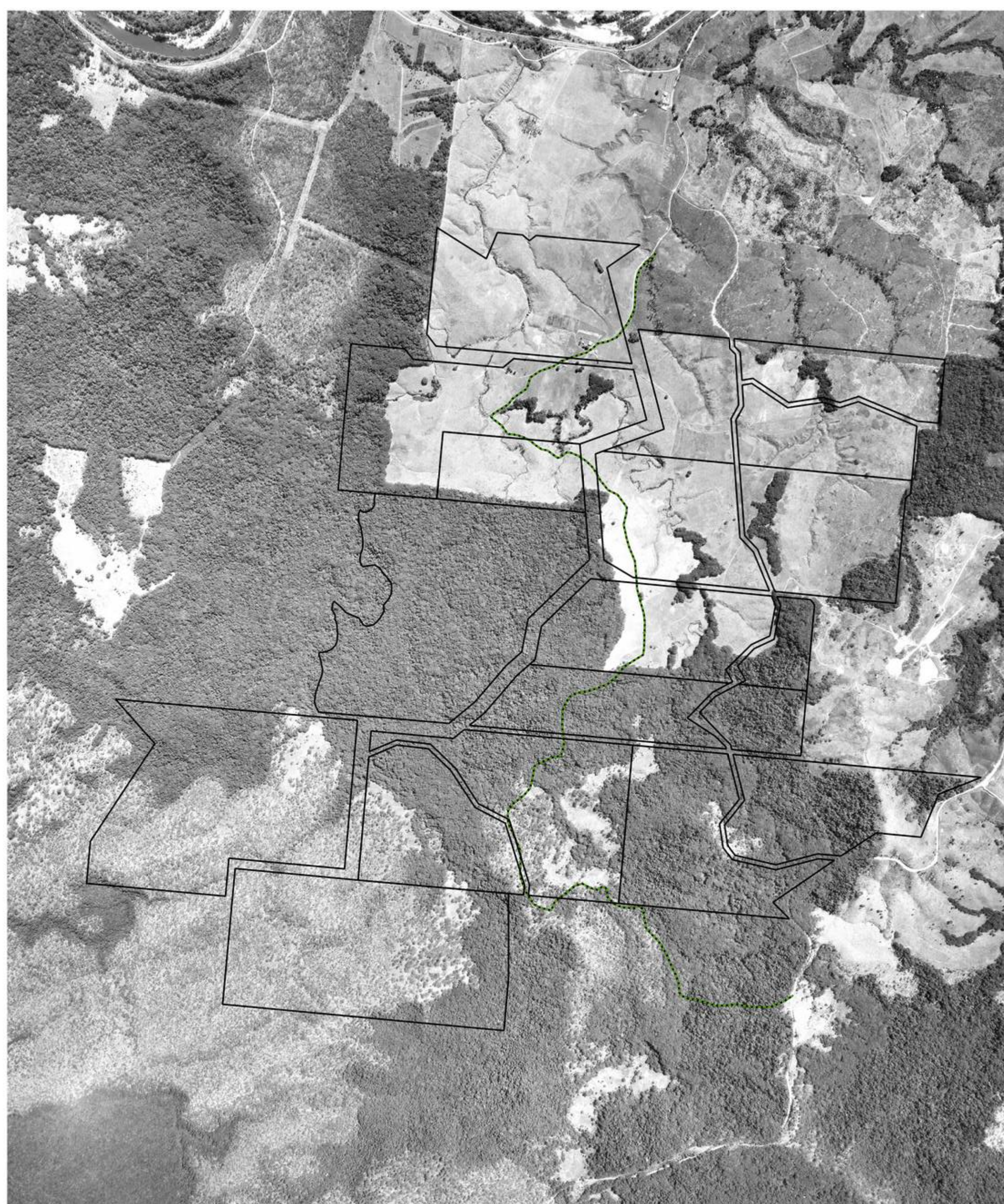
**Legend**

- Myola Project Lots
- Main north-south track



Imagery: QAP0178\_159 run 4, 8064 SOUTHEDGE-CLOHESY 51 PROGRAM AERIAL PHOTOGRAPHY. Produced at 1:25,400. This image reproduced at 1:8,500 when printed at A3.  
 © State of Queensland (Department of Natural Resources and Mines) [2015]. Based on or contains data provided by the State of Queensland (Department of Natural Resources and Mines) [2015]. In consideration of the State permitting use of this data you acknowledge and agree that the State gives no warranty in relation to the data (including accuracy, reliability, completeness, currency or suitability) and accepts no liability (including without limitation, liability in negligence) for any loss, damage or costs (including consequential damage) relating to any use of the data. Data must not be used for direct marketing or be used in breach of the privacy laws.  
 Mareeba Shire DCDB © State of Queensland (Department of Natural Resources and Mines) [2015]  
 GIS operator Simon Danielsen, Astrebla Ecological Services, 20/10/15.





**Reevers and Ocean - Myola landholdings - 1965 aerial image**

250 0 250 500 750 1000 m

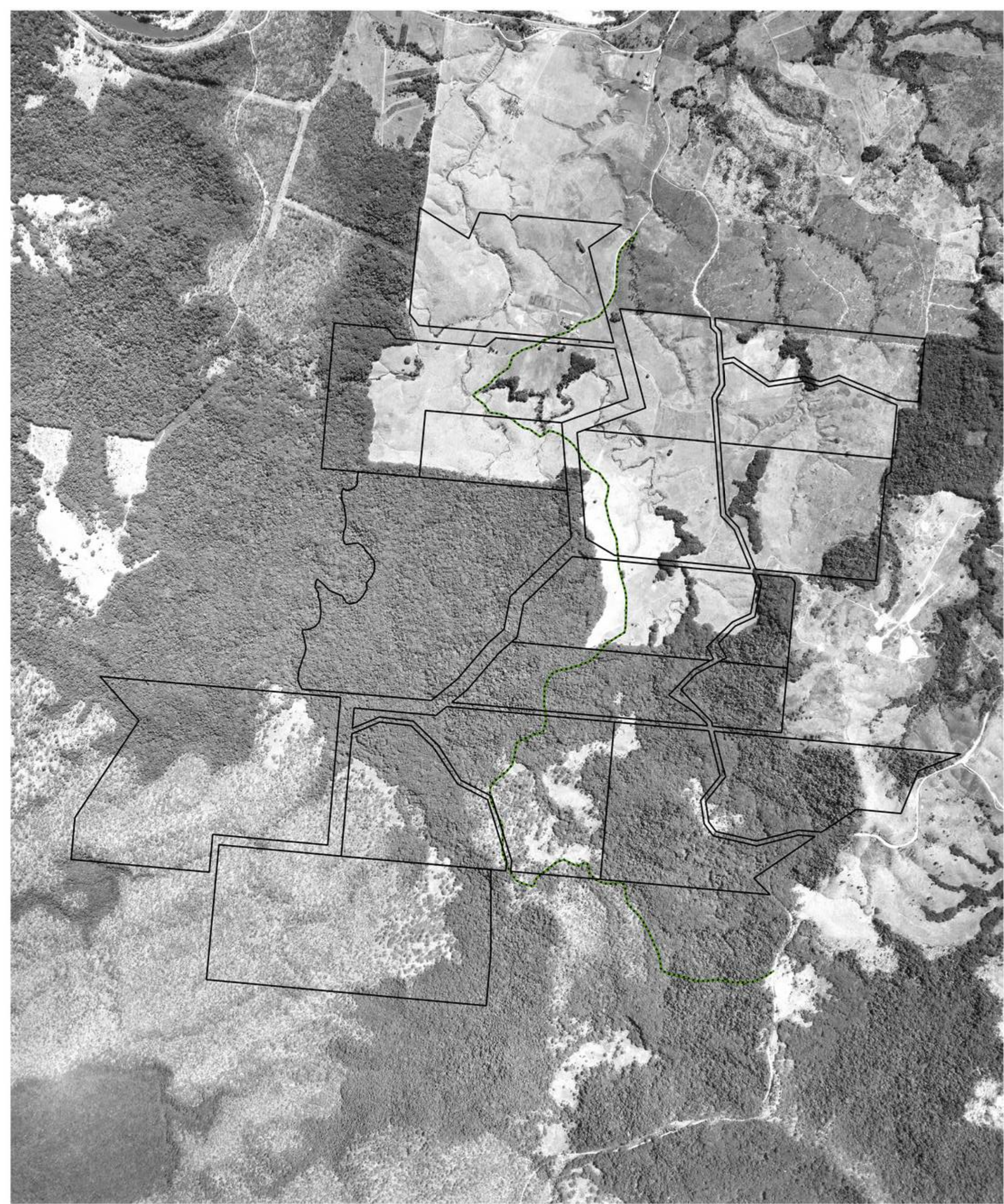


**Legend**

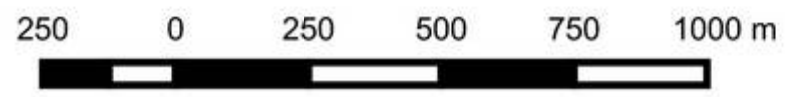
- Myola Project Lots
- Main north-south track







**Reevers and Ocean - Myola landholdings - 1971 aerial image**



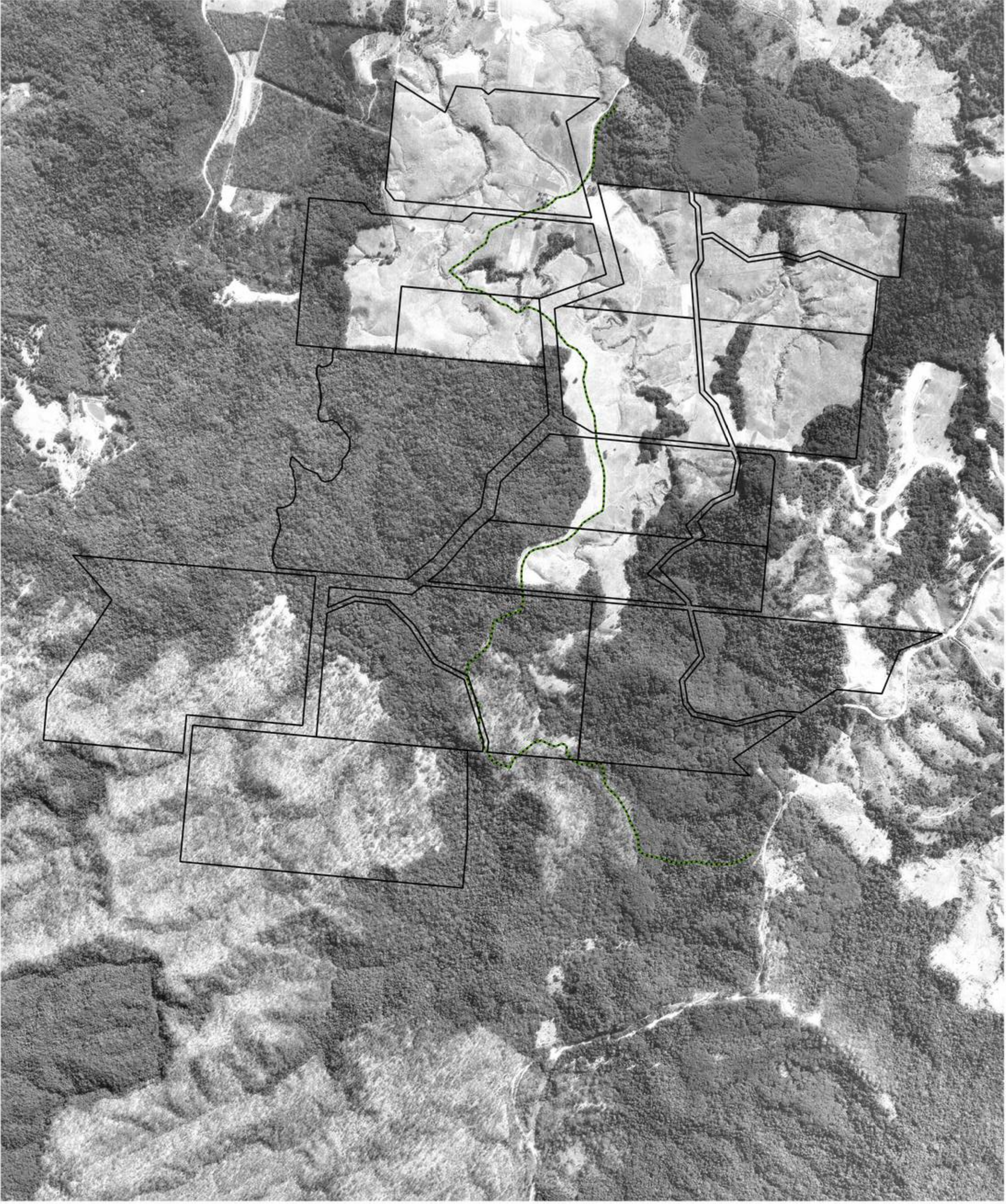
**Legend**

- Myola Project Lots
- Main north-south track

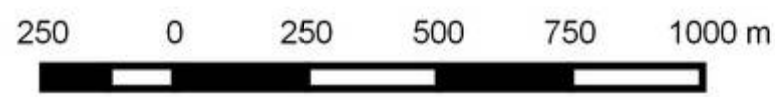
Imagery: QAP2340\_105 run 3, 8064 CAIRNS 71 PROGRAM AERIAL PHOTOGRAPHY. Produced at 1:24,000. This image reproduced at 1:10,000 when printed at A3.  
© State of Queensland (Department of Natural Resources and Mines) [2015]. Based on or contains data provided by the State of Queensland (Department of Natural Resources and Mines) [2015]. In consideration of the State permitting use of this data you acknowledge and agree that the State gives no warranty in relation to the data (including accuracy, reliability, completeness, currency or suitability) and accepts no liability (including without limitation, liability in negligence) for any loss, damage or costs (including consequential damage) relating to any use of the data. Data must not be used for direct marketing or be used in breach of the privacy laws.  
Mareeba Shire DCDB © State of Queensland (Department of Natural Resources and Mines) [2015]  
GIS operator Simon Danielsen, Astrebla Ecological Services, 20/10/15.



**Prepared by ASTREBLA ECOLOGICAL SERVICES**





**Reevers and Ocean - Myola landholdings - 1982 aerial image**



- Legend**
-  Myola Project Lots
  -  Main north-south track







**Reevers and Ocean - Myola landholdings - 1994 aerial image**



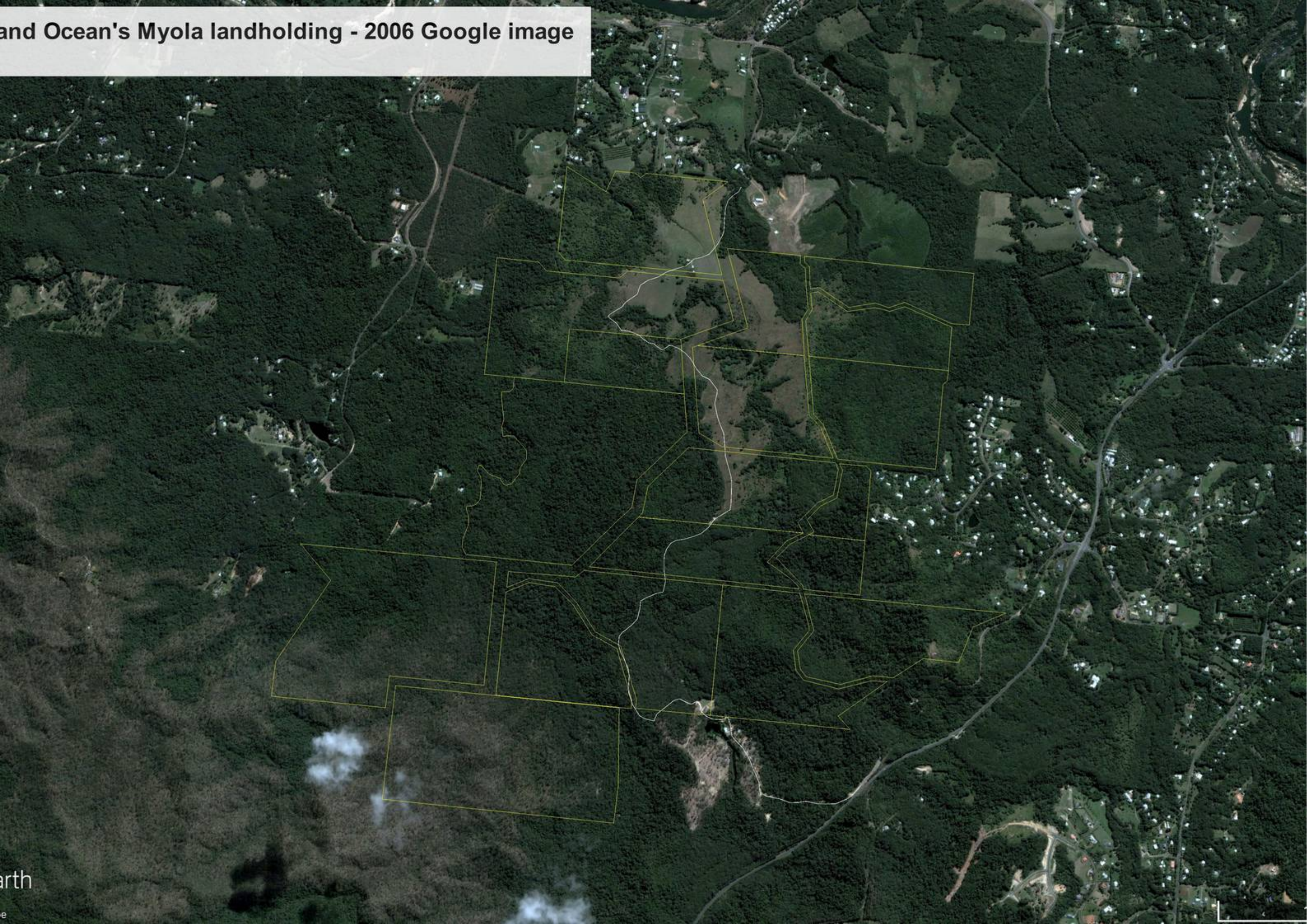
**Legend**

- Myola Project Lots
- Main north-south track

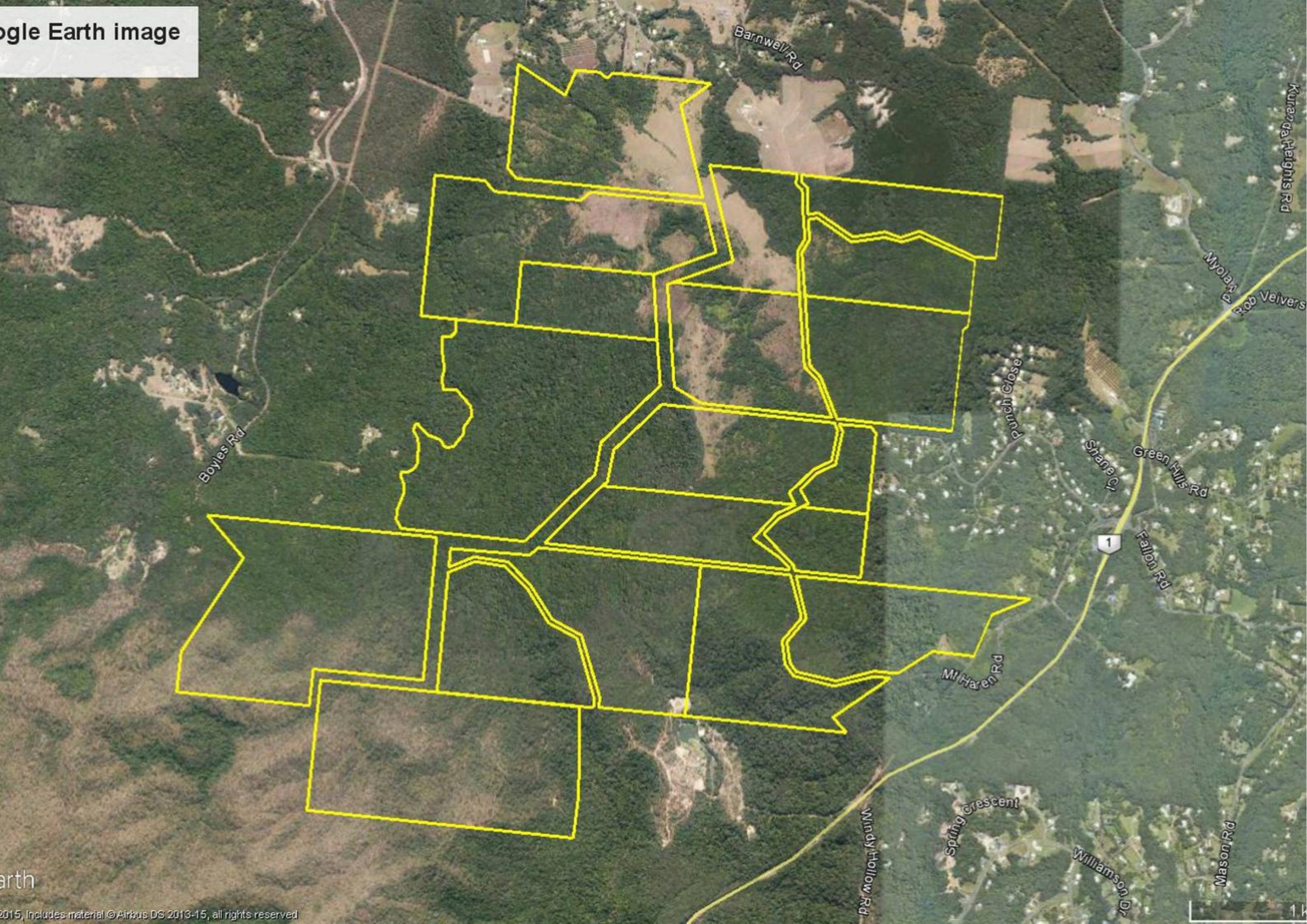




and Ocean's Myola landholding - 2006 Google image





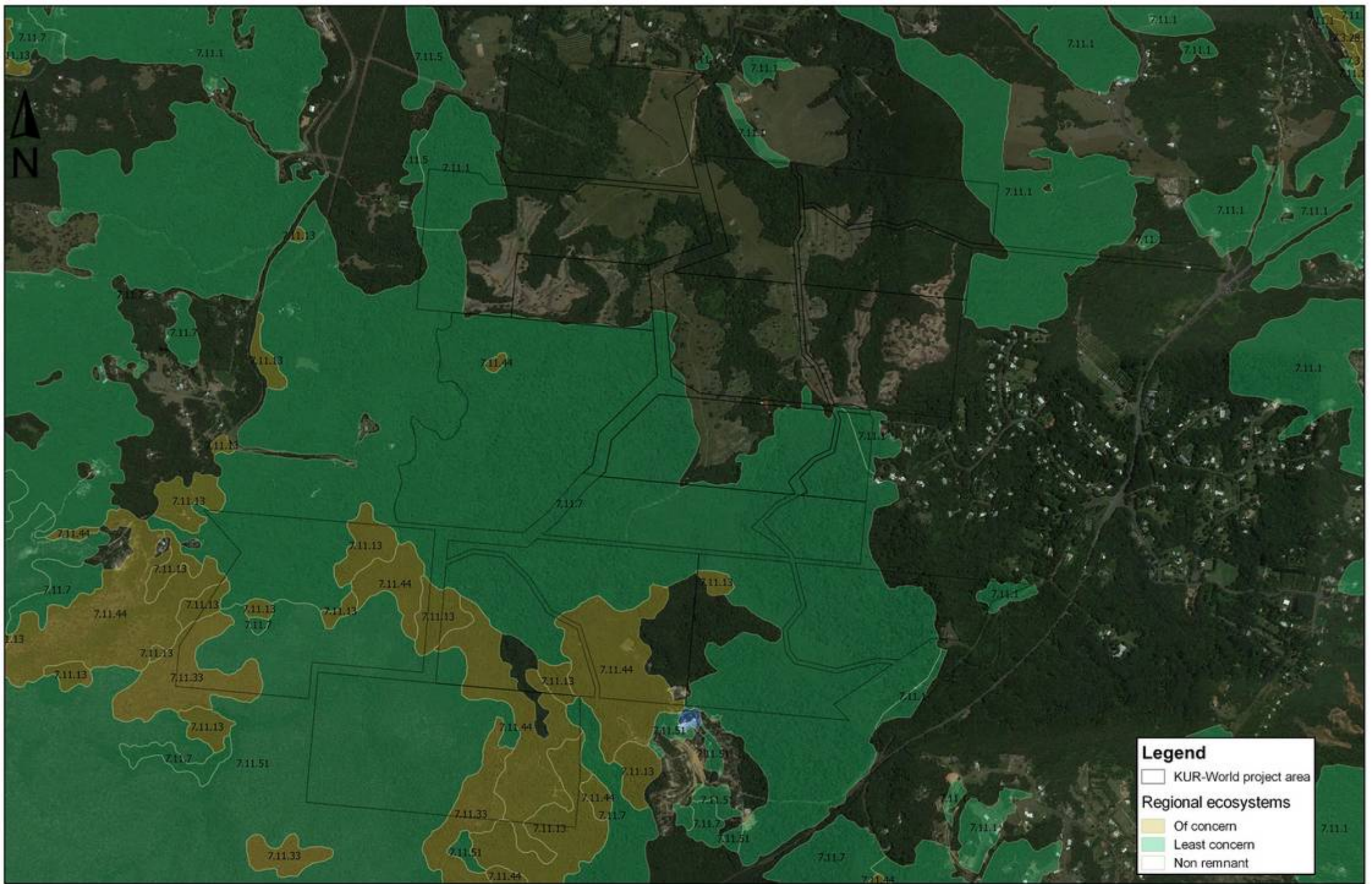




**ATTACHMENT N:  
REGIONAL ECOSYSTEM MAPPING**

**- Astrebla Ecological Services**





**Legend**

- KUR-World project area
- Regional ecosystems**
- Of concern
- Least concern
- Non remnant

**Project area and regional ecosystem mapping (vers. 9.0)**

**Attachment N**

Imagery © Google. Taken 23/10/2015. This image reproduced at 1:20,000 when printed at A4.  
 Regional ecosystem version 9.0 © State of Queensland (Department of Natural Resources and Mines) [2015]  
 Mareeba Shire DCDB & Essential habitat layer © State of Queensland (Department of Natural Resources and Mines) [2015]  
 GIS operator Simon Danielsen, Astrebla Ecological Services, 27/04/16.