

**ATTACHMENT K:
WILDLIFE ONLINE SEARCH**

- Urban Sync Pty Ltd



Queensland Government

Wildlife Online Extract

Search Criteria: Species List for a Defined Area
Species: All
Type: All
Status: All
Records: All
Date: All
Latitude: 16.4847 to 16.5053
Longitude: 145.3458 to 145.3705
Email: louise@urbansync.com.au
Date submitted: Monday 09 May 2016 08:40:33
Date extracted: Monday 09 May 2016 08:50:04

The number of records retrieved = 28

Disclaimer

As the DSITIA is still in a process of collating and vetting data, it is possible the information given is not complete. The information provided should only be used for the project for which it was requested and it should be appropriately acknowledged as being derived from Wildlife Online when it is used.

The State of Queensland does not invite reliance upon, nor accept responsibility for this information. Persons should satisfy themselves through independent means as to the accuracy and completeness of this information.

No statements, representations or warranties are made about the accuracy or completeness of this information. The State of Queensland disclaims all responsibility for this information and all liability (including without limitation, liability in negligence) for all expenses, losses, damages and costs you may incur as a result of the information being inaccurate or incomplete in any way for any reason.

Feedback about Wildlife Online should be emailed to wildlife.online@science.dsitia.qld.gov.au

Kingdom	Class	Family	Scientific Name	Common Name	I	Q	A	Records
animals	birds	Acanthizidae	<i>Sericornis magnirostra</i>	large-billed scrubwren		C		1
animals	birds	Acanthizidae	<i>Gerygone magnirostris</i>	large-billed gerygone		C		1
animals	birds	Artamidae	<i>Artamus leucorhynchus</i>	white-breasted woodswallow		C		1
animals	birds	Columbidae	<i>Macropygia amboinensis</i>	brown cuckoo-dove		C		1
animals	birds	Columbidae	<i>Ducula bicolor</i>	pieb imperial-pigeon		C		2
animals	birds	Cuculidae	<i>Chalcites minutillus</i>	little bronze-cuckoo		C		1
animals	birds	Halcyonidae	<i>Dacelo novaeguineae</i>	laughing kookaburra		C		1
animals	birds	Meliphagidae	<i>Xanthotis macleayanus</i>	Macleay's honeyeater		C		1
animals	birds	Meliphagidae	<i>Meliphaga notata</i>	yellow-spotted honeyeater		C		1
animals	birds	Meliphagidae	<i>Myzomela obscura</i>	dusky honeyeater		C		2
animals	birds	Meliphagidae	<i>Meliphaga gracilis</i>	graceful honeyeater		C		1
animals	birds	Monarchidae	<i>Symposiachrus trivirgatus</i>	spectacled monarch		SL		1
animals	birds	Nectariniidae	<i>Nectarinia jugularis</i>	olive-backed sunbird		C		1
animals	birds	Nectariniidae	<i>Dicaeum hirundinaceum</i>	mistletoebird		C		1
animals	birds	Oriolidae	<i>Oriolus flavocinctus</i>	yellow oriole		C		1
animals	birds	Oriolidae	<i>Sphecotheres vieilloti</i>	Australasian figbird		C		1
animals	birds	Pachycephalidae	<i>Colluricincla megarhyncha</i>	little shrike-thrush		C		1
animals	birds	Pachycephalidae	<i>Colluricincla boweri</i>	Bower's shrike-thrush		C		1
animals	birds	Petroicidae	<i>Heteromyias cinereifrons</i>	grey-headed robin		C		1
animals	birds	Petroicidae	<i>Tregellasia capito</i>	pale-yellow robin		C		1
animals	birds	Psittacidae	<i>Cyclopsitta diophthalma macleayana</i>	Macleay's fig-parrot		V		2
animals	birds	Psittacidae	<i>Trichoglossus haematodus moluccanus</i>	rainbow lorikeet		C		2
animals	birds	Rhipiduridae	<i>Rhipidura rufifrons</i>	rufous fantail		SL		1
animals	birds	Sturnidae	<i>Aplonis metallica</i>	metallic starling		C		1
animals	birds	Timaliidae	<i>Zosterops lateralis</i>	silveryeye		C		1
fungi	sac fungi	Cladoniaceae	<i>Cladonia ramulosa</i>			C		1/1
fungi	sac fungi	Cladoniaceae	<i>Cladonia</i>			C		1/1
plants	higher dicots	Fabaceae	<i>Vandasina retusa</i>			C		1/1

CODES

I - Y indicates that the taxon is introduced to Queensland and has naturalised.

Q - Indicates the Queensland conservation status of each taxon under the *Nature Conservation Act 1992*. The codes are Extinct in the Wild (PE), Endangered (E), Vulnerable (V), Near Threatened (NT), Least Concern (C) or Not Protected ().

A - Indicates the Australian conservation status of each taxon under the *Environment Protection and Biodiversity Conservation Act 1999*. The values of EPBC are Conservation Dependent (CD), Critically Endangered (CE), Endangered (E), Extinct (EX), Extinct in the Wild (XW) and Vulnerable (V).

Records – The first number indicates the total number of records of the taxon for the record option selected (i.e. All, Confirmed or Specimens).

This number is output as 99999 if it equals or exceeds this value. The second number located after the / indicates the number of specimen records for the taxon.

This number is output as 999 if it equals or exceeds this value.

**ATTACHMENT L:
MASTERPLAN**

- CA Architects Pty Ltd

KUR-World

Great Barrier Reef

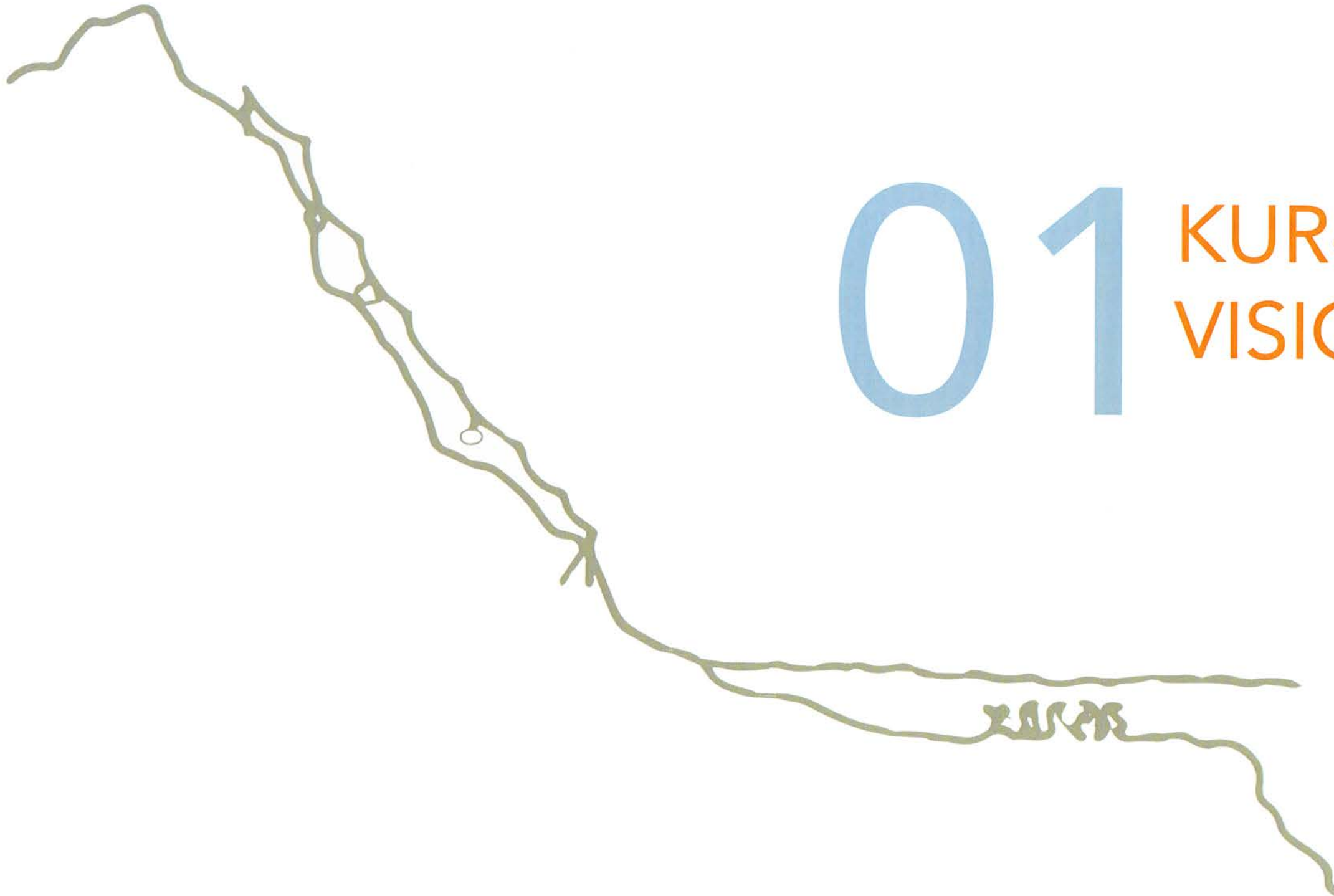




TABLE OF CONTENTS

- 01 VISION
- 02 SITE OVERVIEW AND CONTEXT
- 03 MASTERPLAN
- 04 PRECINCTS
- 05 ACCOMMODATION TYPES

KUR-World
Great Barrier Reef



01 KUR-World VISION



THE VISION



VISION STATEMENT

KUR-World is an integrated eco-resort and innovation hub in Tropical Far North Queensland, where the World Heritage Rainforest meets the Great Barrier Reef. Conceived by Reever & Ocean Developments Pty Ltd, the 626 hectare site will be transformed into a luxury tourism, health and education experience, unparalleled in the region.

Located just 30 minutes from Cairns International Airport, KUR-World is designed around four lifestyle themes:

1. Luxury eco-tourism
2. Education and business
3. Rejuvenation, health and wellbeing
4. Adventure and recreation

1. LUXURY ECO TOURISM

KUR-World will adopt ecologically sustainable development (ESD) principles in its use and enhancement of the site's natural resources. In particular, Reever & Ocean is committed to the responsible management of the unique flora and fauna, which includes the endangered Myola Tree Frog.

This approach – putting the environment first – combined with a range of luxury resort facilities and family accommodation options, will deliver an outstanding tourism experience, supported by Ecotourism Australia certification.

2. EDUCATION AND BUSINESS

In addition to a 5-star resort, medical retreat, and retail village hub, KUR-World will offer internationally recognised degrees in a dedicated campus, with sports facilities and student accommodation, as well as a rainforest education centre and research laboratories. Professional conference and business facilities will also be provided with visitors enjoying a range of accommodation including spacious apartments nestled amongst the unique rainforest setting. A height limit specific to each precinct will further re-inforce the individuality of the experience and sympathy with the natural surrounds.

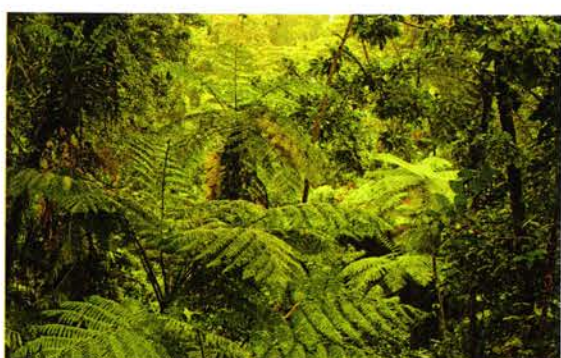
3. REJUVENATION, HEALTH AND WELLBEING

KUR-World's northern zone – to be known as 'Serenity' – will use the natural surrounds to heal the body, relax the mind and sooth the spirit. Here, a combination of Chinese medicinal practices and local indigenous healing and bush remedies will deliver a wellness experience like no other.

At the same time, traditional world-class medical facilities will focus on health improvement and the treatment and management of chronic illness.

4. ADVENTURE AND RECREATION

KUR-World will be an outdoor lover's paradise, with recreational facilities and activities for everyone, including a resort style, 18-hole golf course. Walking trails, swimming pools, sports fields and even an equestrian centre will all be designed to enhance the natural habitat and environment. Australia's pioneering heritage will be captured in KUR-World's southern zone – 'Spirit' - where the natural beauty will remain largely untouched, and adventurers of all ages can enjoy activities designed to lift the spirit and provide an escape from the everyday stresses of modern life.

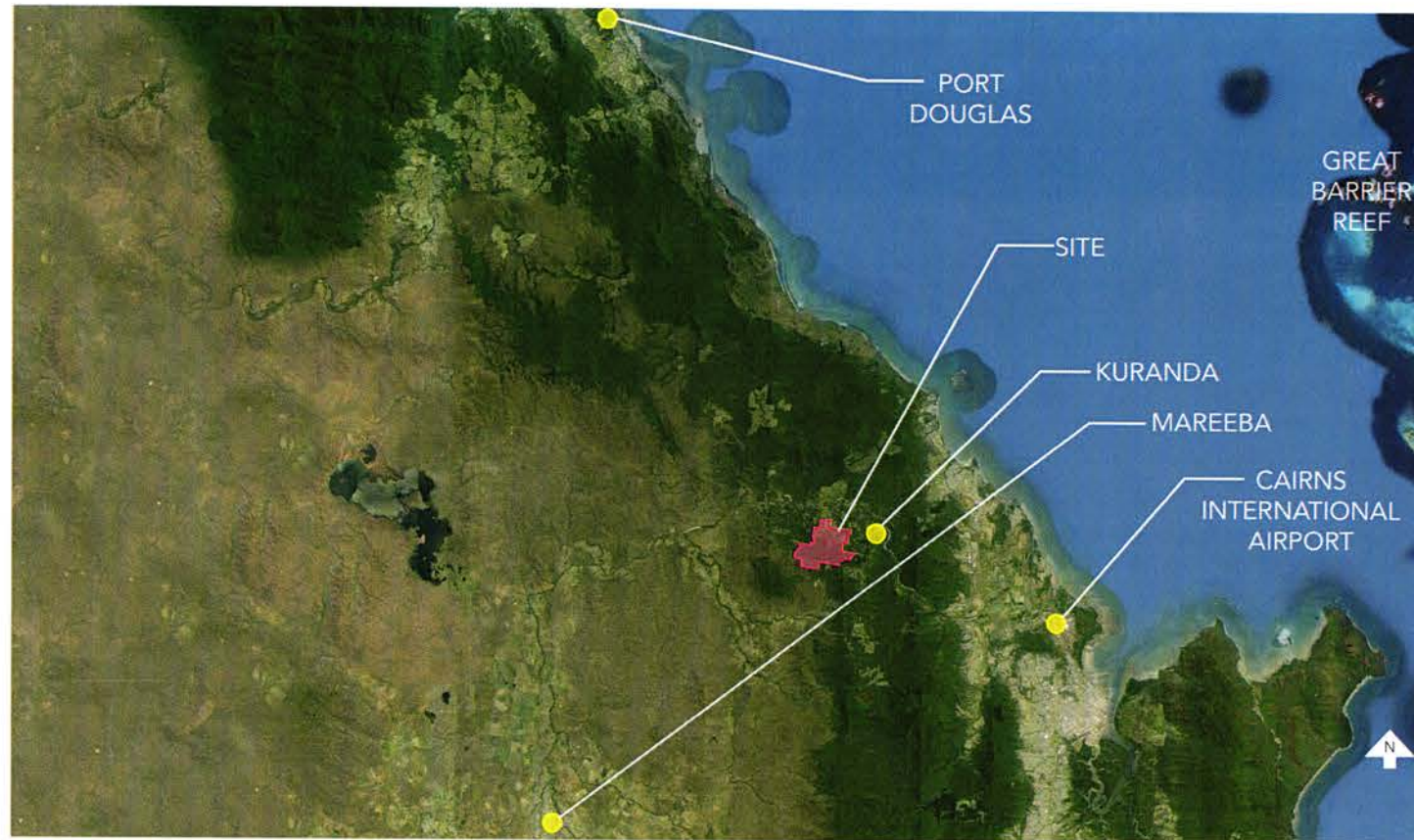




02

SITE OVERVIEW AND CONTEXT

LOCATION



FAR NORTH QUEENSLAND

Where the Rainforest meets the Reef

Welcome to Paradise. Whether it's an indulgent break or a thrilling adventure, this unique region offers you a truly memorable experience. The stunning views and sandy beaches of the coastal areas contrast with the towering trees and crater lakes of the Cairns Hinterland, where KUR-World can be found. Here, in paradise, you can indulge in the dining, shopping and pampering of a cosmopolitan city; experience the rare beauty of the Great Barrier Reef, and be enchanted by the majesty of the earth's oldest surviving tropical rainforests.

SITE CLIMATE

The Cairns Hinterland experiences only mild variations in temperature during its dry and wet seasons. Temperatures rarely exceed 31°C in summer, being moderated by rain and cloud cover from January to March. Night minimums seldom drop below 20°C, however can drop to as low as 8°C as a result of clear skies during the drier, winter months.

KURANDA

Village in the Rainforest

Kuranda is the quintessential village in the rainforest. As the gateway to the Cairns Hinterland, it has been attracting visitors for well over a century. Initially people came to admire the mighty Barron Falls, while artisans were attracted by the region's natural serenity and beauty. Soon they were calling Kuranda home and created a vibrant arts and craft culture. Today people flock to this colourful village to enjoy the natural environment and relaxed friendly atmosphere of the local markets.

Discover the exotic tropical flavours, unique wildlife and outdoor pursuits that make Kuranda and the broader Cairns Hinterland region one of the many must-do's in Far North Queensland. Set against a tapestry of rich farmland, you can explore mountain forests, timeless villages and colourful markets. Or swim, paddle and explore crystal-clear rivers and spectacular waterfalls surrounded by World Heritage rainforests.



LOCAL ATTRACTIONS



LEGEND

- 1 White water rafting
- 2 Birdworld Kuranda
- 3 Kuranda Koala Gardens
- 4 Butterfly Sanctuary
- 5 Australian Venom Zoo
- 6 Kuranda Riverboat
- 7 Rainforest Station

LOCAL ATTRACTIONS

Set in the heart of a World Heritage listed, Wet Tropics rainforest, KUR-World is a stone's throw from a number of exciting and unique attractions. Surround yourself with colourful butterflies, listen to a noisy chorus of birds, cuddle a koala, or get up close to Australia's wilder creatures. If you're feeling more active, you can enjoy a leisurely boat ride or a white-knuckle rafting experience on the Barron River.



WHITE WATER RAFTING



BIRDWORLD



KURANDA KOALA GARDENS



BUTTERFLY SANCTUARY



BARRON GORGE



RAINFORREST STATION

GETTING THERE



THE JOURNEY

A crucial part of the KUR-World experience is the journey to our door, so we have carefully considered each step of the way.

The experience starts as the aircraft begins its descent into Cairns International Airport, with the Great Barrier Reef to the left and tropical mountains to the right. KUR-World guests will be met on arrival and driven 15 minutes north to the Skyrail departure station. As their luggage travels by mountain road, guests will board their private cable car and glide just metres above the canopy to the village of Kuranda, enjoying their first intimate rainforest experience.

Arriving in Kuranda, visitors will be taken by car on their final short trip to KUR-World.

Entry into KUR-World will bring guests to the heart of the northern zone, 'Serenity'. Here they will pass the village and clubhouse before being welcomed at the dedicated reception and taken to their chosen accommodation.

CAIRNS INTERNATIONAL AIRPORT

Cairns Airport is Australia's 7th largest, handling over 4.5 million passengers each year and providing links to a range of domestic and international locations. The airport is just seven kilometres from the Cairns CBD.

From Cairns you can fly direct to all Australian capital cities, as well as major centres such as the Gold Coast, Alice Springs, and Ayers Rock (Uluru). Cairns Airport is also the gateway to all regional centres across the North from the Torres Strait, Weipa, and Cooktown, to Townsville and Toowoomba.

Cairns Airport has direct international flights to Tokyo, Osaka, Hong Kong, Singapore, Bali, Manila, Auckland and Port Moresby, with seasonal flights to Shanghai.

CAPACITY
4 650 000 passengers per year



© Louise Marshall

SKYRAIL RAINFOREST CABLEWAY

Skyrail Rainforest Cableway is a world first in environmental tourism. This unique cable car experience takes you on an amazing journey across the canopy of one of Australia's World Heritage areas, and deep into the rainforest itself.

Skyrail is a not-to-be-missed Cairns tour and attraction spanning 7.5kms over pristine rainforest-clad mountains. With two stations along the way, visitors can explore the wonders of an ancient tropical rainforest and learn about one of the most botanically fascinating and diverse areas on earth.

CAPACITY
350 passengers per hour (1 way)
2 000 000 passengers per year



© Kelisi

KURANDA SCENIC RAILWAY

Closer to the ground than Skyrail, the Kuranda Scenic Railway provides an alternative view of the incredible array of rainforest flora and fauna. Twelve hundred species of flowering plants, eight hundred different rainforest trees, spectacular orchids, strangler figs, exotic palms and hundreds of unique creatures inhabit this lush green world.

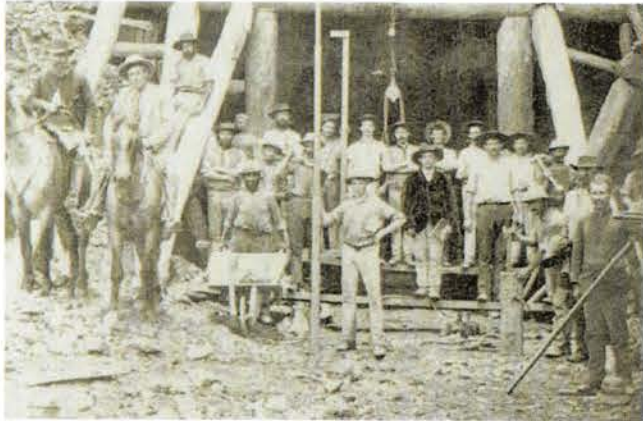
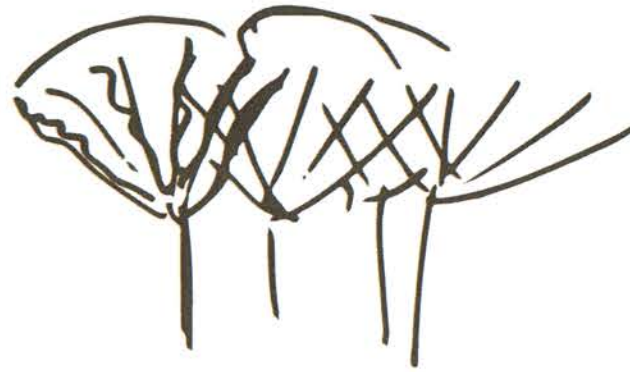
This famous and historic railway winds its way on a journey from Cairns to Kuranda, rising from sea level to 328m, passing spectacular waterfalls, framed by rainforest clad mountains, and into the stunning Barron Gorge.

CAPACITY
700 000 passengers per year

THE SITE



INSPIRATION



RAILWORKERS



GREEN TREE FROG

OUR HISTORY

In the 1890s, Far North Queensland was inhabited by European pioneers and the local Aboriginal people. The impressive Kuranda Railway was finally complete, and the KUR-World property was cleared to grow coffee. It has since had a varied history. Some coffee plants remain to this day, although old disused milking sheds and cattle fencing provide evidence of pastoral use since the early 1940s.

When Reeve & Ocean acquired the property in 2014 the work of clearing the scrubby regrowth and restoring the former beauty and ecological character of the site began.

SITE CHARACTER

The special character of the property is immediately apparent. The mix of Wet Tropics rainforest, and dryer scrub vegetation are framed by the mountain backdrop. The stunning scenery and views are set-off by the sound of fresh running water, cascading over the rocks, providing an instant sense of tranquillity and rejuvenation.

SIGNIFICANT ECOLOGY

A significant factor in the KUR-World masterplan is the recognition of the diverse environmental systems within the site.

The retention and enhancement of these natural values is a high priority, resulting in a masterplan of unparalleled environmental consciousness.

Areas of the site are home to the Myola Tree Frog, an endangered species endemic only to the Kuranda region. It is found in rainforest near slow-moving, permanent and seasonal creeks. The current extent of occurrence for the Myola Tree Frog is estimated to be 13.5km². The species appears to require reasonably thick riparian forest with males found near creeks, while the females generally inhabit the rainforest canopy.

Reeve & Ocean is committed to the responsible management of the ecology, including the endangered Myola Tree Frog.



MYOLA SITE SUNSET

THE SITE



ECOLOGICAL EDUCATION



WORLD CLASS EQUESTRIAN CENTRE



SPORTS FACILITIES



HEALTH AND WELLBEING FACILITIES



ADVENTURE ACTIVITIES



GOLF



INTERNATIONALLY RECOGNISED 5 STAR RESORT



3-STAR ACCOMMODATION

KUR-WORLD TRANSFORMATION

KUR-World will take the best characteristics of the site and transform them into a place of luxurious relaxation and rejuvenation.

This transformation includes:

- A world class 5-star resort, with luxury villa accommodation
- An 18-hole golf course and clubhouse in a rainforest setting
- A 3-star leisure and business resort
- A retail and dining village hub
- A choice of residential lots for 'Lifestyle' or 'Premium' Villas
- A tertiary education campus, business centre and sports facilities
- Health and wellbeing services, including a medical retreat
- A range of outdoor learning and adventure activities
- A rainforest education centre
- A state-of-the-art equestrian centre and farm theme park

The focus of the transformation will be on enhancement, not change, resulting in a range of benefits:

- The preservation of existing native wildlife habitat along watercourses, retaining ecological diversity.
- Collaboration with local indigenous people in the use of cultural and medicinal aspects of Aboriginal life.
- The capacity to attract students from Australia and around the world, by providing a fun, quality learning experience with a focus on local flora and fauna.
- The ability to attract international and Australian visitors through the provision of health and wellbeing services set in a rejuvenating rainforest environment.
- The growth of Australia's national and international reputation for its tropical ecology.

SITE FEATURES

- DEVELOPABLE AREA
- CONSERVATION AREA
- PRIMARY TRAIL
- SECONDARY TRAILS

DEVELOPABLE AREA

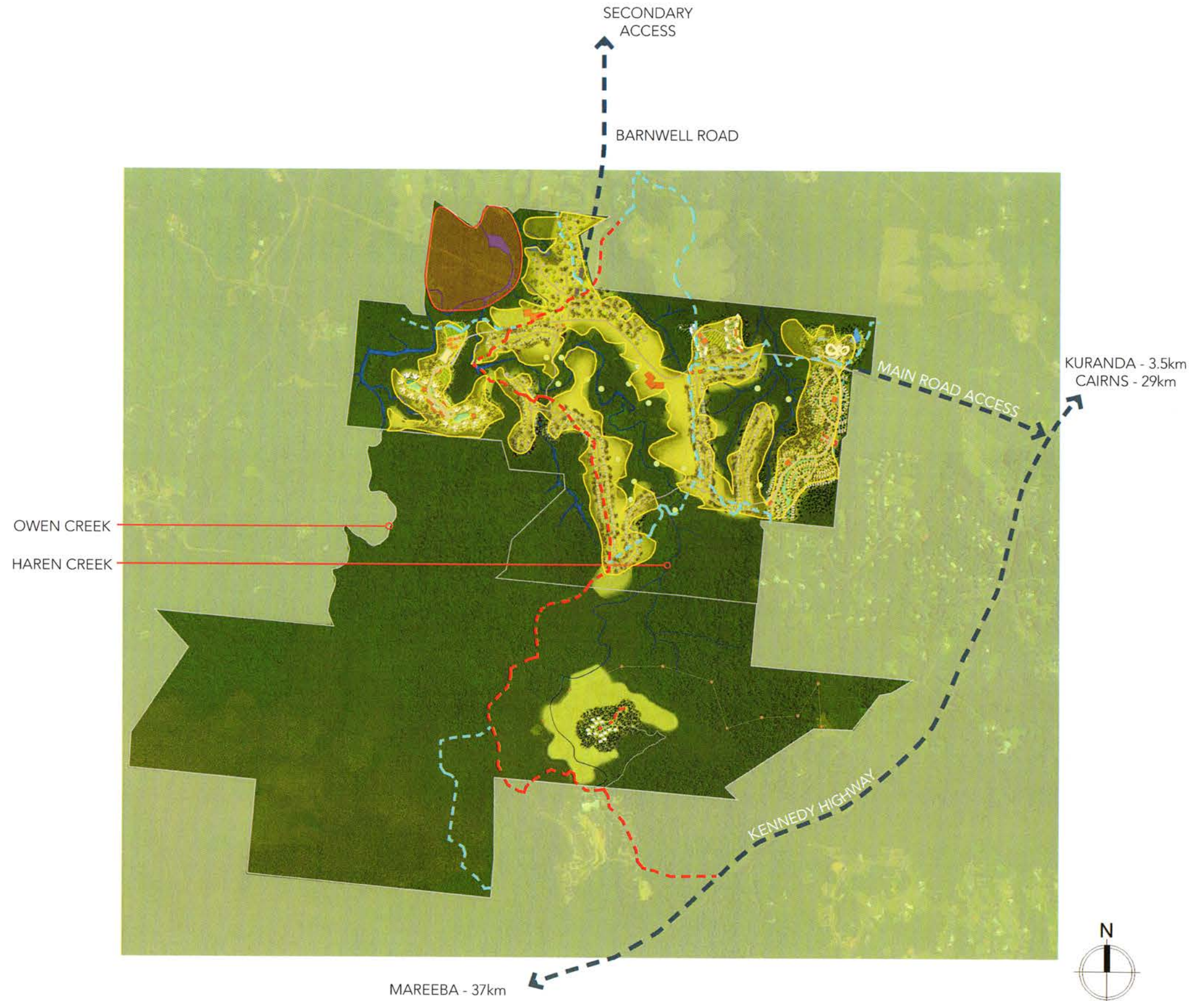
By limiting development to disturbed and previously cleared areas, the extent of ecological impact can be minimised.

EXISTING TRAILS



Existing trails on the site will be integrated with the masterplan, providing enhanced access across the northern and southern Zones.

SITE ACCESS

Access to the site is possible from the north along Barnwell road and east from the Kennedy Highway. Both routes connect the site to Cairns and Port Douglas, providing the main jumping off points to the Great Barrier Reef.



SITE ANALYSIS

-  50m RIPARIAN BUFFER ZONE
-  PREVAILING WINDS

RIPARIAN BUFFER ZONE

To maintain water quality and natural habitat, a riparian buffer zone of 50 metres on both sides of waterways has been established. All works will be undertaken based on expert advice from environmental specialists.

CLIMATE

In the summer months around December, the longer hot days are mitigated by the predominant north-easterly breezes. In the cooler mid-year months, south-easterly breezes provide a comfortable temperature throughout the shorter days.

