



Path: L:\Consult\GIS\GIS_Works\Monarc\CribPtToPakenham\ListedFloraFauna_RevB.mxd

APA Transmission Pty Limited - 31-02984.00

Crib Point Pakenham Pipeline Project Listed Flora and Fauna Page 15 of 24

WORK REQUEST NUMBER: 31-02984.00

DATA SOURCES:
Service Layer Credits: Copyright:© 2018 Garmin
Source: Esri, DigitalGlobe, GeoEye, Earthstar Geographics, CNES/Airbus DS, USDA, USGS, AeroGRID, IGN, and the GIS User Community

ISSUE DATE	AUTHOR	QA CHECK	APPROVED	MAP REV.	REVISION NOTE
04/09/2018	AB	JH	MV	B	Issued for Review
14/08/2018	AB	JH	CC	A	Issued for Review

LEGEND

- Water Course
- Crib Point Pakenham Alignment
- Construction Footprint
- Water Body

Listed Fauna

- Large Scattered Trees
- Small Scattered Trees
- Other Scattered Trees
- Flora Survey Site
- Fauna Survey Site
- Listed Avian Fauna
- FFG Listed Aquatic Fauna
- Glossy Grass Skink
- Growing Grass Frog
- Southern Brown Bandicoot
- Southern Toadlet

Vegetation Patch

- Endangered
- Vulnerable
- Least Concern
- Planted
- EPBC Listed Subtropical and Temperate Coastal Sallmarsh

LOCATION DIAGRAM

1:8,500

(A3) GDA 1994 MGA Zone 55

Monarc does not guarantee the accuracy or completeness of the map and does not make any warranty about the data. Monarc is not under any liability to the user for any loss or damage (including consequential loss or damage) which the user may suffer resulting from the use of this map.



Path: L:\Consult\GIS\GIS_Works\Monarc\CribPtToPakenham\ListedFloraFauna_RevB.mxd

APA Transmission Pty Limited - 31-02984.00

Crib Point Pakenham Pipeline Project Listed Flora and Fauna Page 16 of 24

WORK REQUEST NUMBER: 31-02984.00

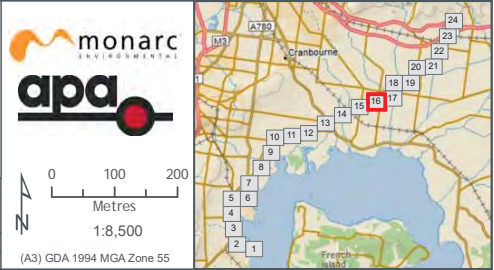
DATA SOURCES:
Service Layer Credits: Copyright© 2018 Garmin
Source: Esri, DigitalGlobe, GeoEye, Earthstar Geographics, CNES/Airbus DS, USDA, USGS, AeroGRID, IGN, and the GIS User Community

ISSUE DATE	AUTHOR	QA CHECK	APPROVED	MAP REV.	REVISION NOTE
04/09/2018	AB	JH	MV	B	Issued for Review
14/08/2018	AB	JH	CC	A	Issued for Review

LEGEND

- | | | | |
|---|--|---|---|
| <ul style="list-style-type: none"> ○ Kilometre Points ⊗ Large Scattered Trees ⊙ Small Scattered Trees ⊕ Other Scattered Trees ● Flora Survey Site ● Fauna Survey Site | <ul style="list-style-type: none"> ● Listed Fauna ● Listed Avian Fauna ● FFG Listed Aquatic Fauna ● Glossy Grass Skink ● Growing Grass Frog ● Southern Brown Bandicoot ● Southern Toadlet | <ul style="list-style-type: none"> — Water Course — Crib Point Pakenham Alignment — Construction Footprint — Water Body | <ul style="list-style-type: none"> ▨ Endangered ▨ Vulnerable ▨ Least Concern ▨ Planted ▨ EPBC Listed Subtropical and Temperate Coastal Saltmarsh |
|---|--|---|---|

LOCATION DIAGRAM



Monarc does not guarantee the accuracy or completeness of the map and does not make any warranty about the data. Monarc is not under any liability to the user for any loss or damage (including consequential loss or damage) which the user may suffer resulting from the use of this map.



APA Transmission Pty Limited - 31-02984.00

Crib Point Pakenham Pipeline Project Listed Flora and Fauna Page 17 of 24

WORK REQUEST NUMBER: 31-02984.00

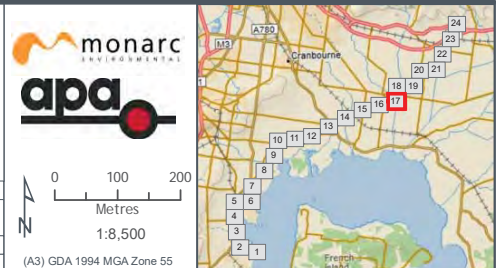
DATA SOURCES:
Service Layer Credits: Copyright:© 2018 Garmin
Source: Esri, DigitalGlobe, GeoEye, Earthstar Geographics,
CNES/Airbus DS, USDA, USGS, AeroGRID, IGN, and the GIS User
Community

ISSUE DATE	AUTHOR	QA CHECK	APPROVED	MAP REV.	REVISION NOTE
04/09/2018	AB	JH	MV	B	Issued for Review
14/08/2018	AB	JH	CC	A	Issued for Review

LEGEND

- | | | |
|----------------------------|---------------------------------|---|
| ○ Kilometre Points | — Water Course | ■ Endangered |
| ⊗ Large Scattered Trees | — Crib Point Pakenham Alignment | ■ Vulnerable |
| ⊙ Small Scattered Trees | — Construction Footprint | ■ Least Concern |
| ⊙ Other Scattered Trees | — Water Body | ■ Planted |
| ● Flora Survey Site | | ■ EPBC Listed Subtropical and Temperate Coastal Saltmarsh |
| ● Fauna Survey Site | | |
| Listed Fauna | | |
| ● Listed Avian Fauna | | |
| ● FFG Listed Aquatic Fauna | | |
| ● Glossy Grass Skink | | |
| ● Growing Grass Frog | | |
| ● Southern Brown Bandicoot | | |
| ● Southern Toadlet | | |

LOCATION DIAGRAM



Path: L:\Consult\GIS\GIS_WRM\Monarc\CribPtToPakenham\ListedFloraFauna_RevB.mxd



Path: L:\Consul\GIS\GIS_Works\Monarc\CribPtToPakenham\ListedFloraFauna_RevB.mxd

APA Transmission Pty Limited - 31-02984.00

Crib Point Pakenham Pipeline Project

Listed Flora and Fauna

Page 18 of 24

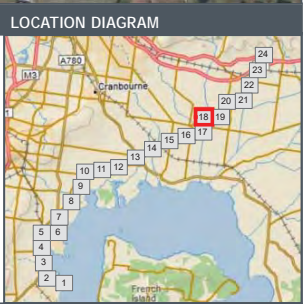
WORK REQUEST NUMBER: 31-02984.00

DATA SOURCES:
 Service Layer Credits: Copyright:© 2018 Garmin
 Source: Esri, DigitalGlobe, GeoEye, Earthstar Geographics, CNES/Airbus DS, USDA, USGS, AeroGRID, IGN, and the GIS User Community

ISSUE DATE	AUTHOR	QA CHECK	APPROVED	MAP REV.	REVISION NOTE
04/09/2018	AB	JH	MV	B	Issued for Review
14/08/2018	AB	JH	CC	A	Issued for Review

LISTED FAUNA	SYMBOL
Listed Avian Fauna	Yellow circle
FFG Listed Aquatic Fauna	Blue circle
Glossy Grass Skink	Green circle
Growing Grass Frog	Light green circle
Southern Brown Bandicoot	Light blue circle
Southern Toadlet	Purple circle

VEGETATION PATCH	SYMBOL
Endangered	Red hatched box
Vulnerable	Orange hatched box
Least Concern	Yellow hatched box
Planted	Green hatched box
EPBC Listed Subtropical and Temperate Coastal Saltmarsh	Blue hatched box



Monarc does not guarantee the accuracy or completeness of the map and does not make any warranty about the data. Monarc is not under any liability to the user for any loss or damage (including consequential loss or damage) which the user may suffer resulting from the use of this map.



APA Transmission Pty Limited - 31-02984.00

Crib Point Pakenham Pipeline Project Listed Flora and Fauna Page 19 of 24

WORK REQUEST NUMBER: 31-02984.00

DATA SOURCES:
Service Layer Credits: Copyright:© 2018 Garmin
Source: Esri, DigitalGlobe, GeoEye, Earthstar Geographics,
CNES/Airbus DS, USDA, USGS, AeroGRID, IGN, and the GIS User
Community

ISSUE DATE	AUTHOR	QA CHECK	APPROVED	MAP REV.	REVISION NOTE
04/09/2018	AB	JH	MV	B	Issued for Review
14/08/2018	AB	JH	CC	A	Issued for Review

LEGEND

- | | | | |
|--|---|--|--|
| <ul style="list-style-type: none"> ○ Kilometre Points ● Large Scattered Trees ● Small Scattered Trees ● Other Scattered Trees ● Flora Survey Site ● Fauna Survey Site | <ul style="list-style-type: none"> ● Listed Avian Fauna ● FFG Listed Aquatic Fauna ● Glossy Grass Skink ● Growing Grass Frog ● Southern Brown Bandicoot ● Southern Toadlet | <ul style="list-style-type: none"> — Water Course — Crib Point Pakenham Alignment Construction Footprint Water Body | <ul style="list-style-type: none"> Endangered Vulnerable Least Concern Planted EPBC Listed Subtropical and Temperate Coastal Saltmarsh |
|--|---|--|--|

LOCATION DIAGRAM



Path: L:\Consul\GIS\GIS_WRM\Monarc\CribPtToPakenham\ListedFloraFauna_RevB.mxd

Monarc does not guarantee the accuracy or completeness of the map and does not make any warranty about the data. Monarc is not under any liability to the user for any loss or damage (including consequential loss or damage) which the user may suffer resulting from the use of this map.



Path: L:\Consulting\GIS\GIS_Works\Monarc\CribPtToPakenham\ListedFloraFauna_RevB.mxd

APA Transmission Pty Limited - 31-02984.00

Crib Point Pakenham Pipeline Project

Listed Flora and Fauna

Page 20 of 24

WORK REQUEST NUMBER: 31-02984.00

DATA SOURCES:
 Service Layer Credits: Copyright© 2018 Garmin
 Source: Esri, DigitalGlobe, GeoEye, Earthstar Geographics, CNES/Airbus DS, USDA, USGS, AeroGRID, IGN, and the GIS User Community

ISSUE DATE	AUTHOR	QA CHECK	APPROVED	MAP REV.	REVISION NOTE
04/09/2018	AB	JH	MV	B	Issued for Review
14/08/2018	AB	JH	CC	A	Issued for Review

LEGEND

- | | | | |
|---|--|---|---|
| <ul style="list-style-type: none"> ○ Kilometre Points ⊗ Large Scattered Trees ⊗ Small Scattered Trees ⊗ Other Scattered Trees ● Flora Survey Site ● Fauna Survey Site | <ul style="list-style-type: none"> ● Listed Fauna ● Listed Avian Fauna ● FFG Listed Aquatic Fauna ● Glossy Grass Skink ● Growing Grass Frog ● Southern Brown Bandicoot ● Southern Toadlet | <ul style="list-style-type: none"> — Water Course — Crib Point Pakenham Alignment Construction Footprint Water Body | <ul style="list-style-type: none"> Endangered Vulnerable Least Concern Planted EPBC Listed Subtropical and Temperate Coastal Saltmarsh |
|---|--|---|---|

LOCATION DIAGRAM

0 100 200 Metres

1:8,500

(A3) GDA 1994 MGA Zone 55

Monarc does not guarantee the accuracy or completeness of the map and does not make any warranty about the data. Monarc is not under any liability to the user for any loss or damage (including consequential loss or damage) which the user may suffer resulting from the use of this map.



Path: L:\Consult\GIS\GIS_WRM\Monarc\CribPtToPakenham\ListedFloraFauna_RevB.mxd

APA Transmission Pty Limited - 31-02984.00

Crib Point Pakenham Pipeline Project Listed Flora and Fauna Page 21 of 24

WORK REQUEST NUMBER: 31-02984.00

DATA SOURCES:
Service Layer Credits: Copyright© 2018 Garmin
Source: Esri, DigitalGlobe, GeoEye, Earthstar Geographics, CNES/Airbus DS, USDA, USGS, AeroGRID, IGN, and the GIS User Community

LEGEND					
	Kilometre Points		Large Scattered Trees		Water Course
	Small Scattered Trees		Listed Avian Fauna		Crib Point Pakenham Alignment
	Other Scattered Trees		FFG Listed Aquatic Fauna		Construction Footprint
	Flora Survey Site		Glossy Grass Skink		Water Body
	Fauna Survey Site		Growing Grass Frog		
			Southern Brown Bandicoot		
			Southern Toadlet		
					Endangered
					Vulnerable
					Least Concern
					Planted
					EPBC Listed Subtropical and Temperate Coastal Sallmarsh

0 100 200
Metres

1:8,500

(A3) GDA 1994 MGA Zone 55

LOCATION DIAGRAM

Monarc does not guarantee the accuracy or completeness of the map and does not make any warranty about the data. Monarc is not under any liability to the user for any loss or damage (including consequential loss or damage) which the user may suffer resulting from the use of this map.



Path: L:\Consult\GIS\GIS_WRM\Monarc\CribPtToPakenham\ListedFloraFauna_RevB.mxd

APA Transmission Pty Limited - 31-02984.00

Crib Point Pakenham Pipeline Project Listed Flora and Fauna Page 22 of 24

WORK REQUEST NUMBER: 31-02984.00

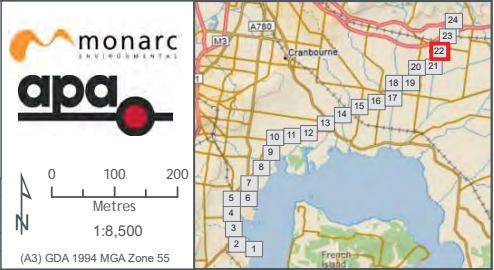
DATA SOURCES:
Service Layer Credits: Copyright:© 2018 Garmin
Source: Esri, DigitalGlobe, GeoEye, Earthstar Geographics, CNES/Airbus DS, USDA, USGS, AeroGRID, IGN, and the GIS User Community

ISSUE DATE	AUTHOR	QA CHECK	APPROVED	MAP REV.	REVISION NOTE
04/09/2018	AB	JH	MV	B	Issued for Review
14/08/2018	AB	JH	CC	A	Issued for Review

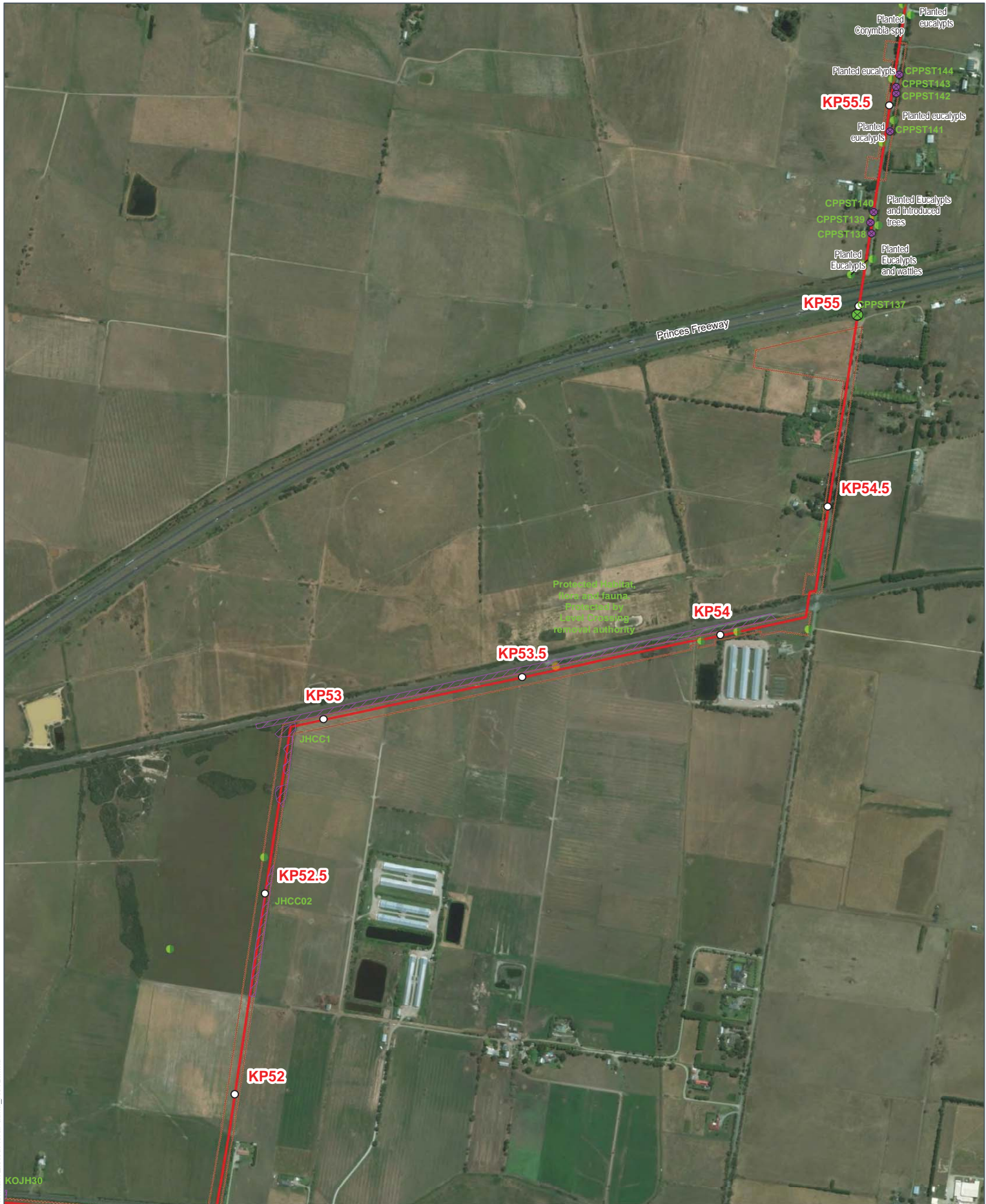
LEGEND

- | | | | |
|---|--|--|--|
| <ul style="list-style-type: none"> ○ Kilometre Points ● Large Scattered Trees ● Small Scattered Trees ● Other Scattered Trees ● Flora Survey Site ● Fauna Survey Site | <ul style="list-style-type: none"> ● Listed Avian Fauna ● FFG Listed Aquatic Fauna ● Glossy Grass Skink ● Growing Grass Frog ● Southern Brown Bandicoot ● Southern Toadlet | <ul style="list-style-type: none"> — Water Course — Crib Point Pakenham Alignment Construction Footprint Water Body | <ul style="list-style-type: none"> Endangered Vulnerable Least Concern Planted EPBC Listed Subtropical and Temperate Coastal Saltmarsh |
|---|--|--|--|

LOCATION DIAGRAM



Monarc does not guarantee the accuracy or completeness of the map and does not make any warranty about the data. Monarc is not under any liability to the user for any loss or damage (including consequential loss or damage) which the user may suffer resulting from the use of this map.



Path: L:\Consult\GIS\GIS_WRM\Monarc\CribPtToPakenham\ListedFloraFauna_RevB.mxd

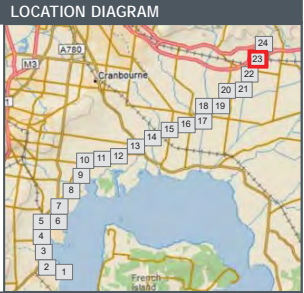
APA Transmission Pty Limited - 31-02984.00

Crib Point Pakenham Pipeline Project Listed Flora and Fauna Page 23 of 24

WORK REQUEST NUMBER: 31-02984.00

DATA SOURCES:
Service Layer Credits: Copyright:© 2018 Garmin
Source: Esri, DigitalGlobe, GeoEye, Earthstar Geographics, CNES/Airbus DS, USDA, USGS, AeroGRID, IGN, and the GIS User Community

ISSUE DATE	AUTHOR	QA CHECK	APPROVED	MAP REV.	REVISION NOTE
04/09/2018	AB	JH	MV	B	Issued for Review
14/08/2018	AB	JH	CC	A	Issued for Review



Monarc does not guarantee the accuracy or completeness of the map and does not make any warranty about the data. Monarc is not under any liability to the user for any loss or damage (including consequential loss or damage) which the user may suffer resulting from the use of this map.



Path: L:\Consult\GIS\GIS_Works\monarc\CribPtToPakenham\ListedFloraFauna_RevB.mxd

APA Transmission Pty Limited - 31-02984.00

Crib Point Pakenham Pipeline Project

Listed Flora and Fauna

Page 24 of 24

WORK REQUEST NUMBER: 31-02984.00

DATA SOURCES:
 Service Layer Credits: Copyright © 2018 Garmin
 Source: Esri, DigitalGlobe, GeoEye, Earthstar Geographics, CNES/Airbus DS, USDA, USGS, AeroGRID, IGN, and the GIS User Community

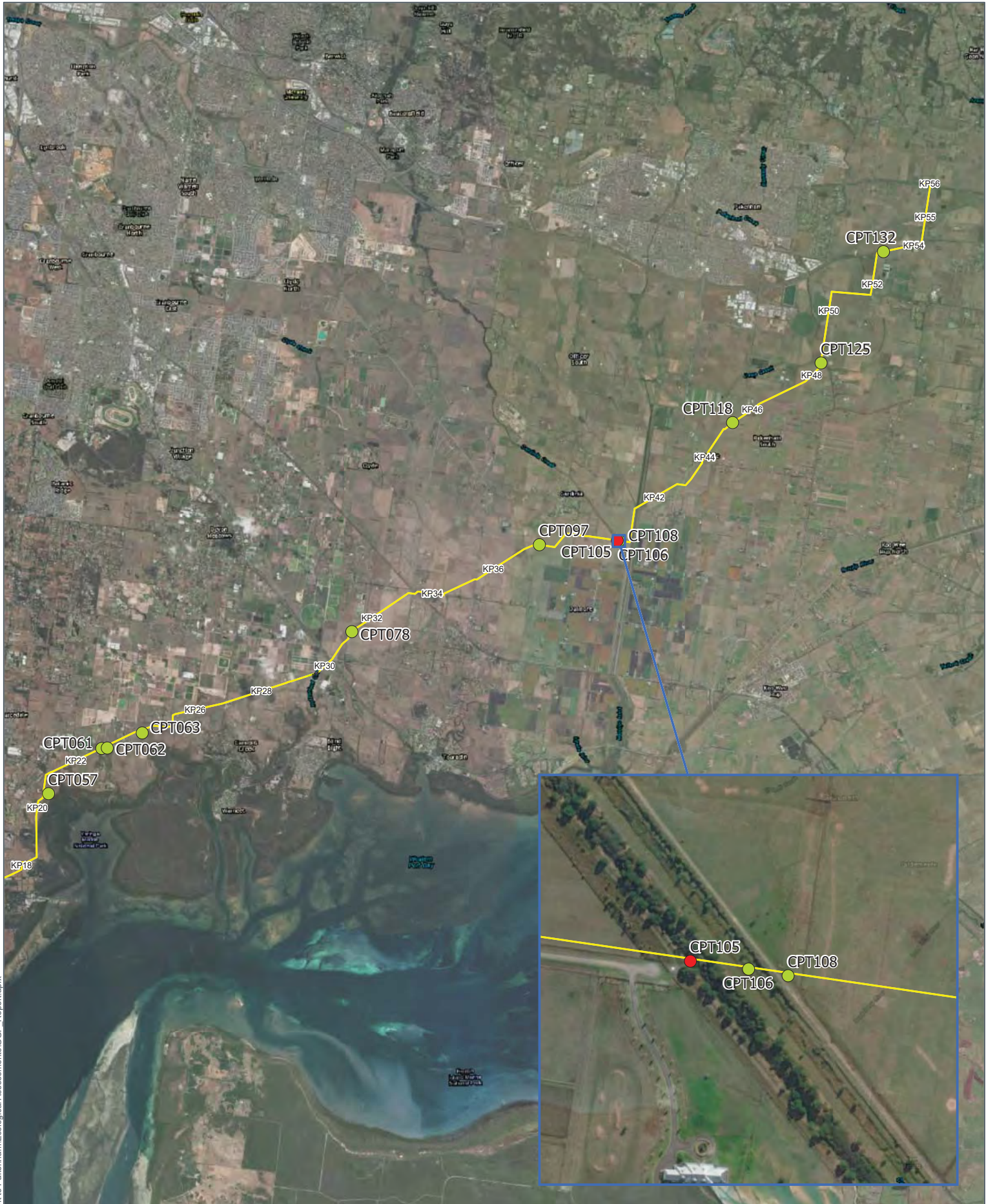
ISSUE DATE	AUTHOR	QA CHECK	APPROVED	MAP REV.	REVISION NOTE
04/09/2018	AB	JH	MV	B	Issued for Review
14/08/2018	AB	JH	CC	A	Issued for Review

LEGEND

- | | | | |
|--|--|---|--|
| <ul style="list-style-type: none"> ○ Kilometre Points ⊗ Large Scattered Trees ⊙ Small Scattered Trees ⊙ Other Scattered Trees ● Flora Survey Site ● Fauna Survey Site | <ul style="list-style-type: none"> ● Listed Avian Fauna ● FFG Listed Aquatic Fauna ● Glossy Grass Skink ● Growing Grass Frog ● Southern Brown Bandicoot ● Southern Toadlet | <ul style="list-style-type: none"> — Water Course — Crib Point Pakenham Alignment ▭ Construction Footprint ▭ Water Body | <ul style="list-style-type: none"> Endangered Vulnerable Least Concern Planted EPBC Listed Subtropical and Temperate Coastal Saltmarsh |
|--|--|---|--|

LOCATION DIAGRAM

Monarc does not guarantee the accuracy or completeness of the map and does not make any warranty about the data. Monarc is not under any liability to the user for any loss or damage (including consequential loss or damage) which the user may suffer resulting from the use of this map.



APA Transmission Pty Limited- 31-02984.00

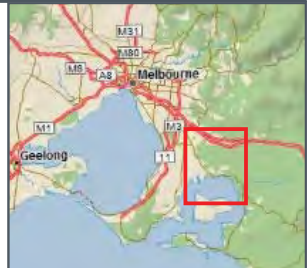
LEGEND

LOCATION DIAGRAM

Crib Point Pakenham Pipeline Project
Figure 2: Growling Grass Frog Targeted Survey Location Map

Targeted Survey Locations

- GGF present
- GGF absent
- Pipeline Alignment

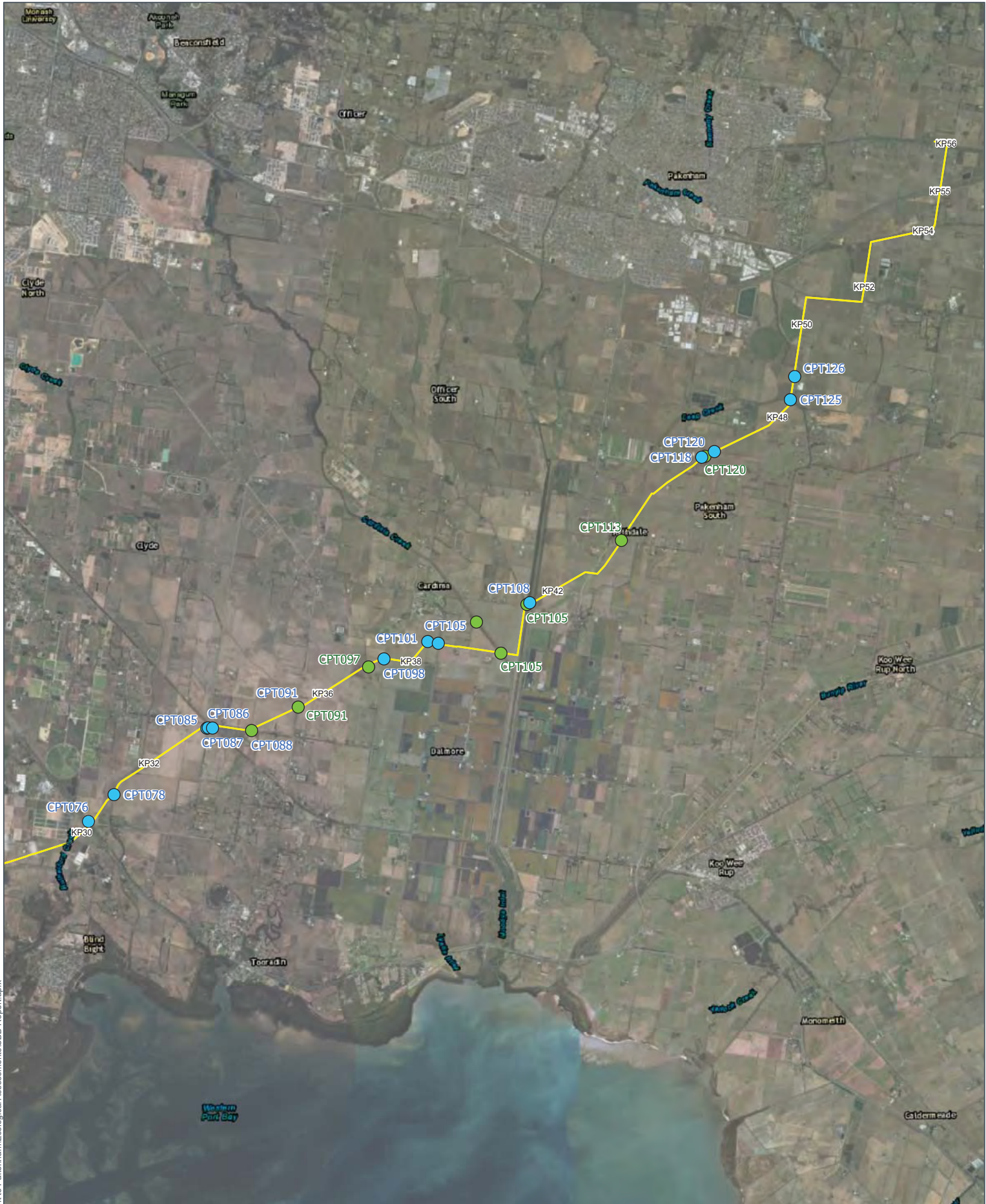


WORK REQUEST NUMBER: 31-02984.00						
DATA SOURCES: Service Layer Credits: Reference/World_Boundaries_and_Places; Esri, HERE, Garmin DeLorme World Basemap; Copyright © 2018 Garmin World Imagery: Source: Esri, DigitalGlobe, GeoEye, Earthstar Geographics, CNES/Airbus DS, USDA, USGS, AeroGRID, IGN, and						
ISSUE DATE	AUTHOR	QA CHECK	APPROVED	MAP REV.	REVISION NOTE	
21/08/2018	AB	JH	MV	B	Issued for Review	
09/07/2018	KH	JH	CC	A	Issued for Review	

ISSUE DATE	AUTHOR	QA CHECK	APPROVED	MAP REV.	REVISION NOTE
21/08/2018	AB	JH	MV	B	Issued for Review
09/07/2018	KH	JH	CC	A	Issued for Review



Monarc does not guarantee the accuracy or completeness of the map and does not make any warranty about the data. Monarc is not under any liability to the user for any loss or damage (including consequential loss or damage) which the user may suffer resulting from the use of this map.



APA Transmission Pty Limited- 31-02984.00

LEGEND

LOCATION DIAGRAM

Crib Point Pakenham Pipeline Project
Figure 3: Southern Brown Bandicoot
Mitigation Area
- KP30 to KP55.6

Targeted Survey Locations

- SBB present
- SBB absent
- Pipeline Alignment

WORK REQUEST NUMBER: 31-02984.00

DATA SOURCES:
 Service Layer Credits: Reference/World_Boundaries_and_Places: Esri,
 HERE, Garmin
 DeLorme World Basemap: Copyright:© 2018 Garmin
 World_Imagery: Earthstar Geographics, CNES/Airbus DS

ISSUE DATE	AUTHOR	QA CHECK	APPROVED	MAP REV.	REVISION NOTE
20/08/2018	AB	JH	MV	B	Issued for Review
30/07/2018	KH	JH	CC	A	Issued for Review



(A3) GDA 1994 MGA Zone 55



Path: L:\Monarc\ESRI\Clients\APA\Gasnet\Crib Point to Pakenham\Ecological Assessments\SBB Report.aprx

Monarc does not guarantee the accuracy or completeness of the map and does not make any warranty about the data. Monarc is not under any liability to the user for any loss or damage (including consequential loss or damage) which the user may suffer resulting from the use of this map.



KP 23.0 Threatened Species:
 - Australasian Shoveler
 - Blue-billed Duck
 - Cattle Egret
 - Eastern Great Egret
 - Hardhead

KP 40.1 Threatened Species:
 - Growing Grass Frog
 - Southern Brown Bandicoot

APA Transmission Pty Limited- 31-02984.00

Crib Point Pakenham Pipeline Project Figure 4: Threatened Fauna Species Locations

LEGEND

Threatened Amphibians	Threatened Birds	● Hardhead
● Growing Grass Frog	● Australasian Shoveler	● Lewin's Rail
● Southern Toadlet	● Blue-billed Duck	Threatened Mammals
Threatened Reptiles	● Cattle Egret	■ Southern Brown Bandicoot
▲ Glossy Grass Skink	● Eastern Great Egret	— Pipeline Alignment

LOCATION DIAGRAM

monarc ENVIRONMENTAL
 apa

0 1 2
 Kilometres
 1:120,000
 (A3) GDA 1994 MGA Zone 55

WORK REQUEST NUMBER: 31-02984.00

DATA SOURCES:
 Service Layer Credits: Reference/World_Boundaries_and_Places: Esri, HERE, Garmin
 DeLorme World Basemap: Copyright:© 2018 Garmin
 World_Imagery: Earthstar Geographics, CNES/Airbus DS

ISSUE DATE	AUTHOR	QA CHECK	APPROVED	MAP REV.	REVISION NOTE
20/08/2018	AB	JH	MV	B	Issued for Review
09/07/2018	KH	JH	CC	A	Issued for Review

Monarc does not guarantee the accuracy or completeness of the map and does not make any warranty about the data. Monarc is not under any liability to the user for any loss or damage (including consequential loss or damage) which the user may suffer resulting from the use of this map.