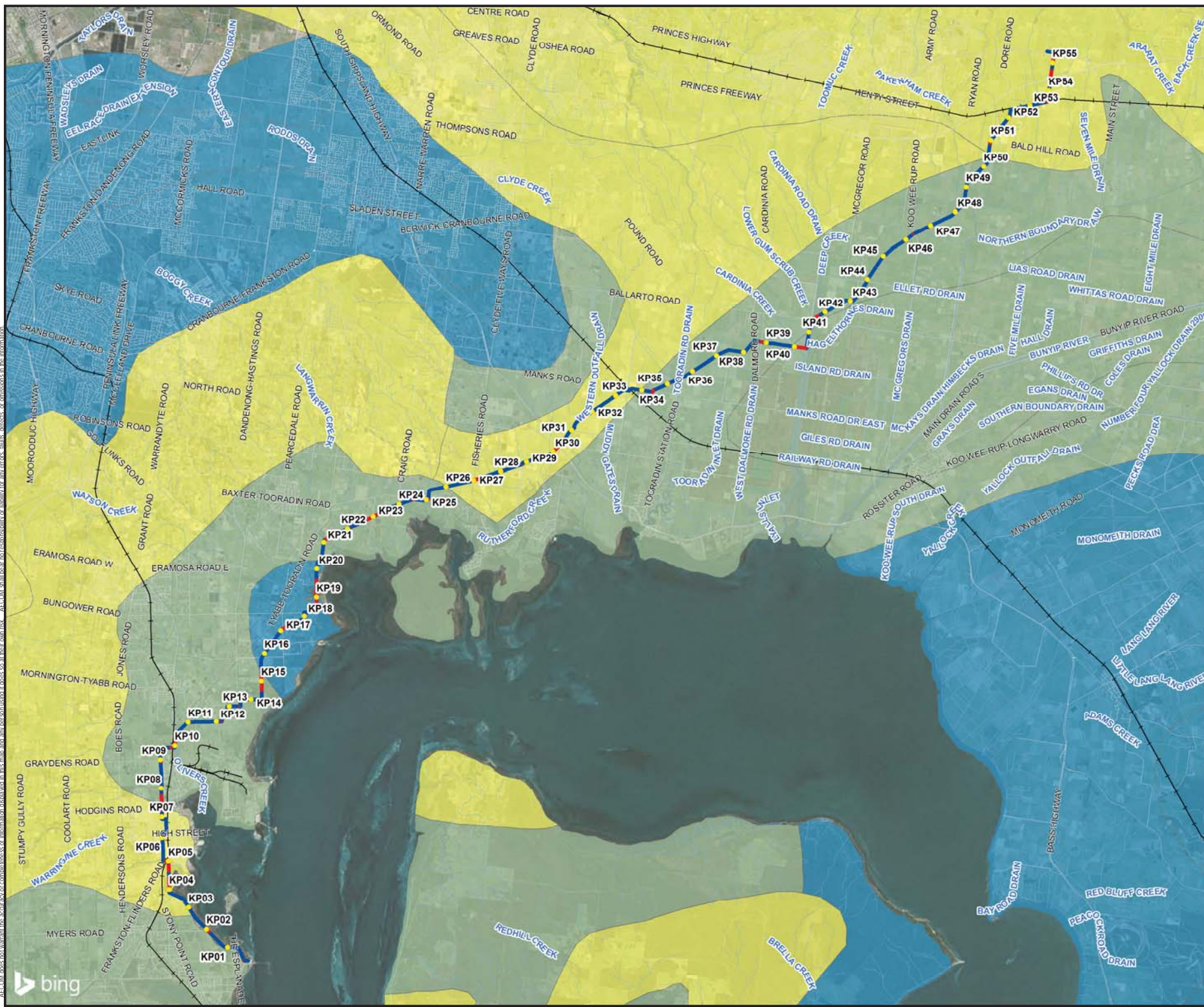


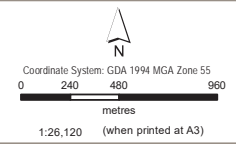
- LEGEND**
- Trench
 - Trenchless
 - + Bairnsdale-Melbourne Railway
 - Watercourses
- Groundwater Salinity**
- < 1000 mg/L TDS
 - 1000-3000 mg/L TDS
 - 3000-7000 mg/L TDS
 - 7000-14000 mg/L TDS
 - > 14000 mg/L TDS



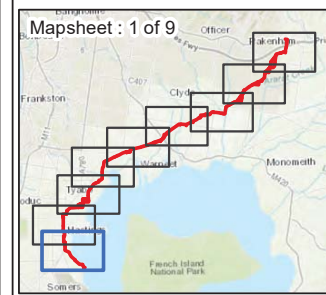
Groundwater Salinity

APA Group
 Hydrological and Hydrogeological Assessment – Crib Point to Pakenham Pipeline Project
 Westport, VIC

Figure F5



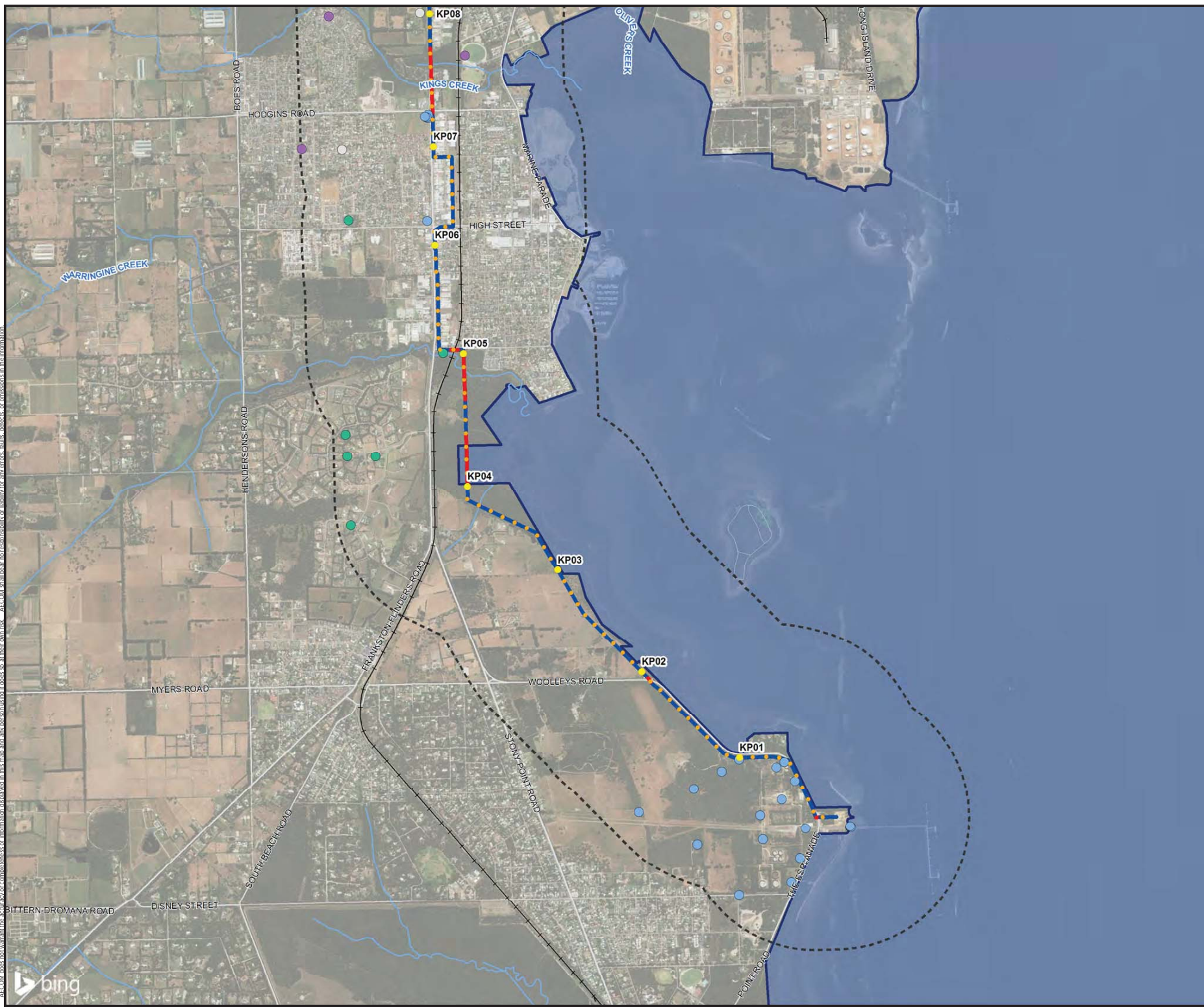
- LEGEND**
- Trench
 - Trenchless
 - Bairnsdale-Melbourne Railway
 - Watercourses
 - 1Km Buffer
- Ramsar wetlands**
- Western Port
- Groundwater Bore Use**
- Commercial
 - GW investigation or Observation bore
 - Irrigation or stock, domestic and irrigation
 - Stock, domestic and dairy
 - Stock, domestic or stock and domestic
 - Stock, domestic and miscellaneous
 - Not known

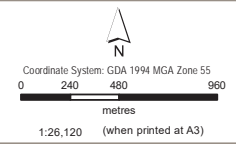


Registered Groundwater Bores

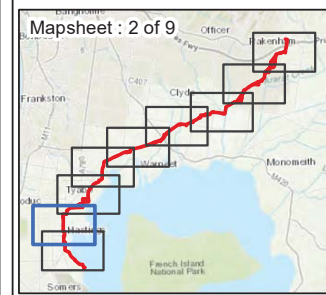
APA Group
 Hydrological and Hydrogeological Assessment – Crib Point to Pakenham Pipeline Project
 Westerport, VIC

Figure F6a





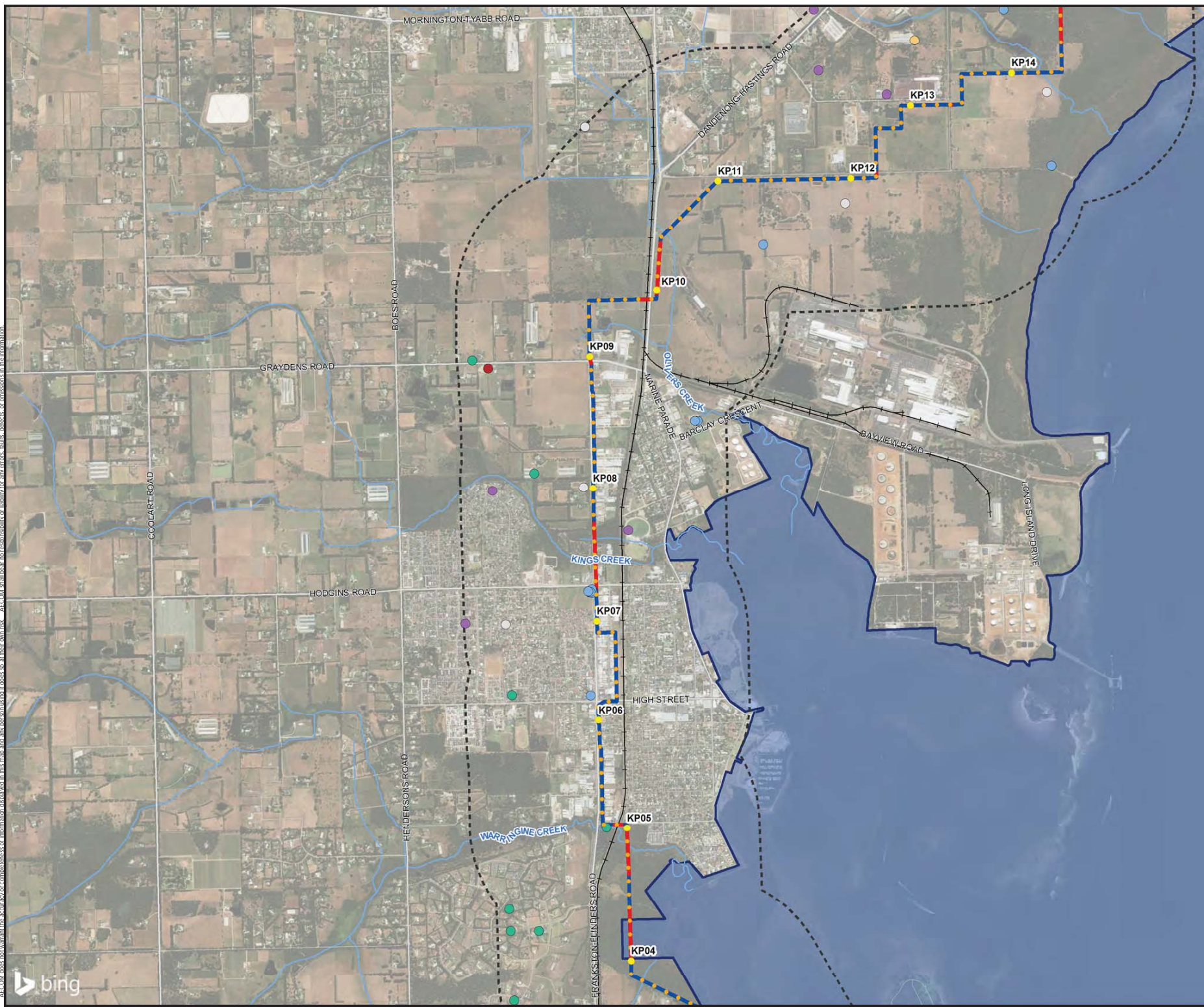
- LEGEND**
- Trench
 - Trenchless
 - Bairnsdale-Melbourne Railway
 - Watercourses
 - 1Km Buffer
 - Ramsar wetlands**
 - Western Port
 - Groundwater Bore Use**
 - Commercial
 - GW investigation or Observation bore
 - Irrigation or stock, domestic and irrigation
 - Stock, domestic and dairy
 - Stock, domestic or stock and domestic
 - Stock, domestic and miscellaneous
 - Not known



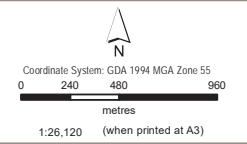
Registered Groundwater Bores

APA Group
 Hydrological and Hydrogeological Assessment – Crib Point to Pakenham Pipeline Project
 Westerport, VIC

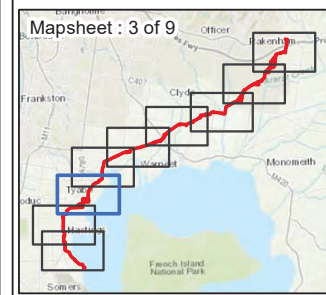
Figure F6b



AECOM does not warrant the accuracy or completeness of information displayed in this map and any resolution it does so at their own risk. AECOM shall bear no responsibility or liability for any errors, omissions or distortions in this information.



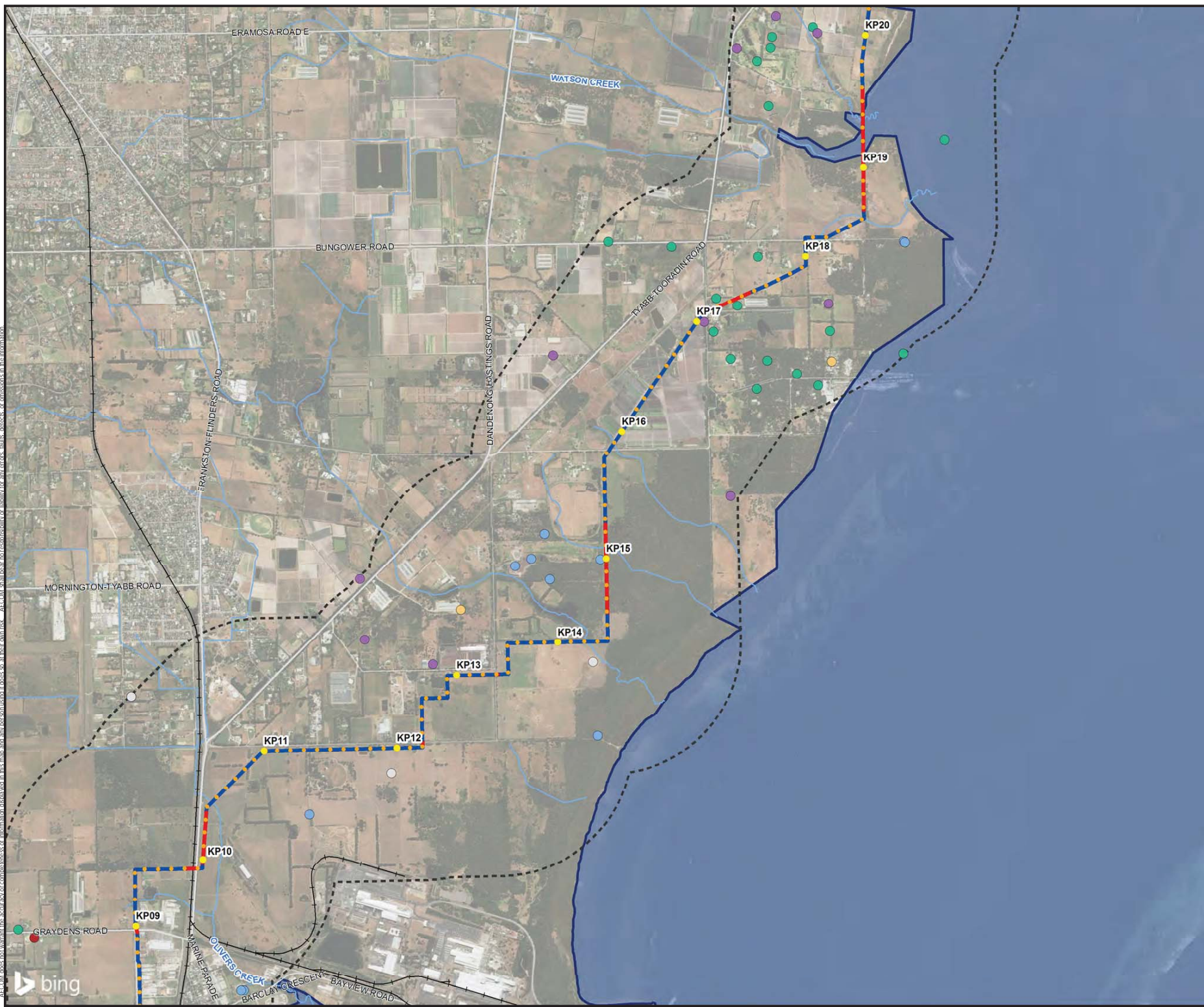
- LEGEND**
- Trench
 - Trenchless
 - Bairnsdale-Melbourne Railway
 - Watercourses
 - 1Km Buffer
 - Ramsar wetlands**
 - Western Port
 - Groundwater Bore Use**
 - Commercial
 - GW investigation or Observation bore
 - Irrigation or stock, domestic and irrigation
 - Stock, domestic and dairy
 - Stock, domestic or stock and domestic
 - Stock, domestic and miscellaneous
 - Not known

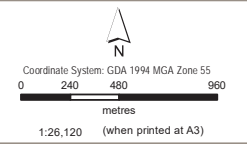


Registered Groundwater Bores

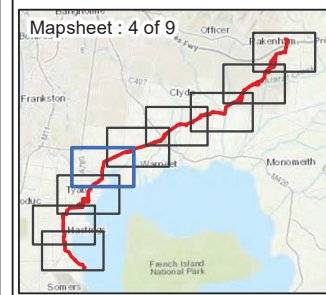
APA Group
 Hydrological and Hydrogeological
 Assessment – Crib Point to
 Pakenham Pipeline Project
 Westerport, VIC

**Figure
 F6c**





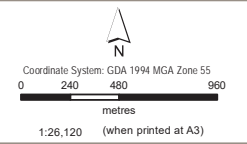
- LEGEND**
- Trench
 - Trenchless
 - Bairnsdale-Melbourne Railway
 - Watercourses
 - 1Km Buffer
 - Ramsar wetlands**
 - Western Port
 - Groundwater Bore Use**
 - Commercial
 - GW investigation or Observation bore
 - Irrigation or stock, domestic and irrigation
 - Stock, domestic and dairy
 - Stock, domestic or stock and domestic
 - Stock, domestic and miscellaneous
 - Not known



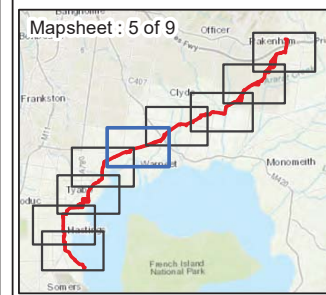
Registered Groundwater Bores

APA Group
 Hydrological and Hydrogeological
 Assessment – Crib Point to
 Pakenham Pipeline Project
 Westerport, VIC

**Figure
 F6d**



- LEGEND**
- Trench
 - Trenchless
 - Bairnsdale-Melbourne Railway
 - Watercourses
 - 1Km Buffer
 - Ramsar wetlands**
 - Western Port
 - Groundwater Bore Use**
 - Commercial
 - GW investigation or Observation bore
 - Irrigation or stock, domestic and irrigation
 - Stock, domestic and dairy
 - Stock, domestic or stock and domestic
 - Stock, domestic and miscellaneous
 - Not known

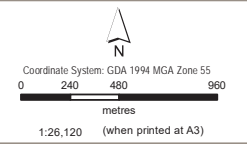


Registered Groundwater Bores

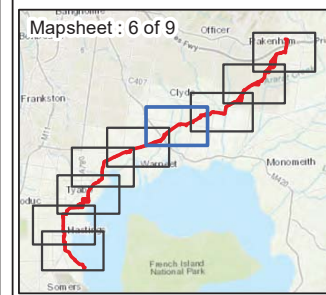
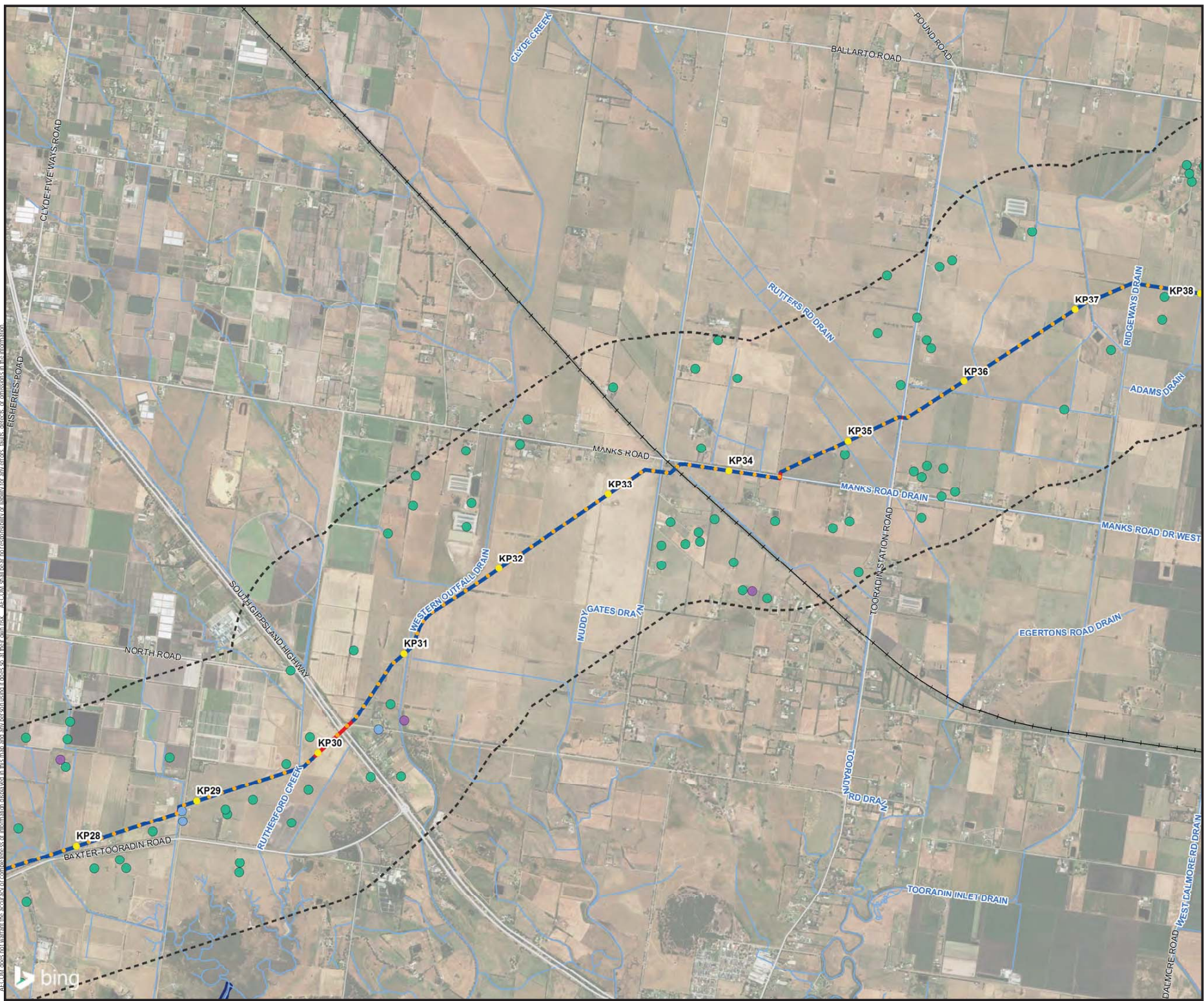
APA Group
 Hydrological and Hydrogeological
 Assessment – Crib Point to
 Pakenham Pipeline Project
 Westerport, VIC

**Figure
 F6e**





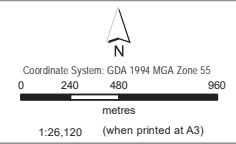
- LEGEND**
- Trench
 - Trenchless
 - + Bairnsdale-Melbourne Railway
 - Watercourses
 - 1Km Buffer
 - Ramsar wetlands**
 - Western Port
 - Groundwater Bore Use**
 - Commercial
 - GW investigation or Observation bore
 - Irrigation or stock, domestic and irrigation
 - Stock, domestic and dairy
 - Stock, domestic or stock and domestic
 - Stock, domestic and miscellaneous
 - Not known



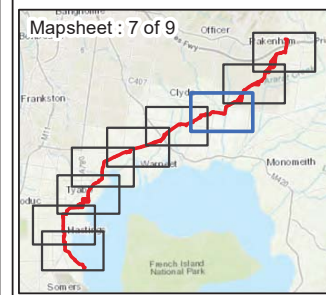
Registered Groundwater Bores

APA Group
 Hydrological and Hydrogeological
 Assessment – Crib Point to
 Pakenham Pipeline Project
 Westerport, VIC

**Figure
 F6f**



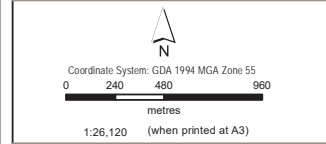
- LEGEND**
- Trench
 - Trenchless
 - Bairnsdale-Melbourne Railway
 - Watercourses
 - 1Km Buffer
- Groundwater Bore Use**
- Commercial
 - GW investigation or Observation bore
 - Irrigation or stock, domestic and irrigation
 - Stock, domestic and dairy
 - Stock, domestic or stock and domestic
 - Stock, domestic and miscellaneous
 - Not known



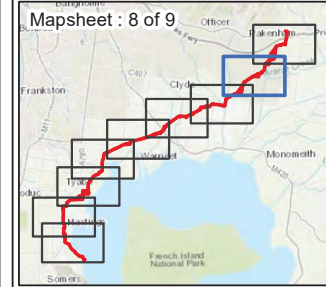
Registered Groundwater Bores

APA Group
 Hydrological and Hydrogeological
 Assessment – Crib Point to
 Pakenham Pipeline Project
 Westerport, VIC

**Figure
 F6g**



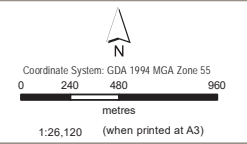
- LEGEND**
- Trench
 - Trenchless
 - Bairnsdale-Melbourne Railway
 - Watercourses
 - 1Km Buffer
- Groundwater Bore Use**
- Commercial
 - GW investigation or Observation bore
 - Irrigation or stock, domestic and irrigation
 - Stock, domestic and dairy
 - Stock, domestic or stock and domestic
 - Stock, domestic and miscellaneous
 - Not known



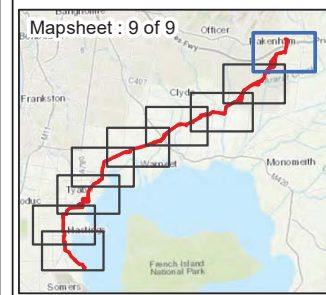
Registered Groundwater Bores

APA Group
 Hydrological and Hydrogeological Assessment – Crib Point to Pakenham Pipeline Project
 Westerport, VIC

Figure F6h



- LEGEND**
- Trench
 - Trenchless
 - Bairnsdale-Melbourne Railway
 - Watercourses
 - 1Km Buffer
- Groundwater Bore Use**
- Commercial
 - GW investigation or Observation bore
 - Irrigation or stock, domestic and irrigation
 - Stock, domestic and dairy
 - Stock, domestic or stock and domestic
 - Stock, domestic and miscellaneous
 - Not known



Registered Groundwater Bores

Map Document: (\\naum11p003.au.aecomnet.com\groups\WTRISpatial\Sys\Projects\2018\CPT_Geo\02_Maps\F6_GW_Bores.mxd)