

APA Transmission Pty Limited
 Phone: +61 2 9693 0000
 Web: www.apa.com.au
 Email: cribpointpakenham@apa.com.au

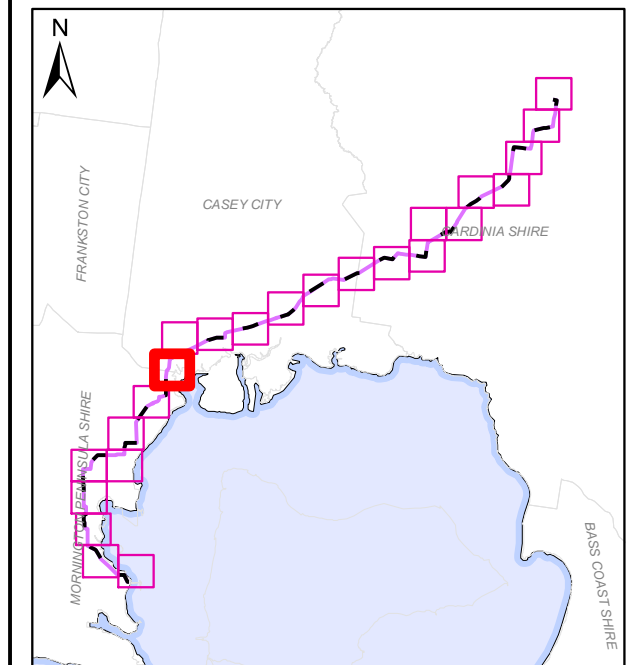
PROJECT: **CRIB POINT PAKENHAM PIPELINE**

TITLE: Pipeline Construction Methodology

SUBTITLE: Attachment 1D

DATE: 27/08/2018

DATA SOURCE:
 Service Layer Credits: Source: Esri, DigitalGlobe, GeoEye, Earthstar
 Geographics, CNES/Airbus DS, USDA, USGS, AeroGRID, IGN, and the GIS User
 Community
 Geoscience Australia 2016 Locations and Roads
 Copyright © The State of Victoria, Department of Environment, Land, Water &
 Planning 2018

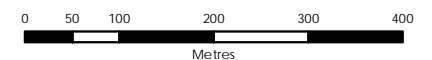


- LEGEND
- Kilometre Point
 - Open - Cut Construction
 - Trenchless Construction
 - Watercourse
 - Affected Parcels
 - Crib Point/Pakenham Facility

**ACCURATE AT
DATE OF ISSUE**

DOCUMENT NUMBER: CPT-MAP-L-0054 Page 9 of 24

Revision	Description	Drawn	Checked	QC	Approved	Date
0.1	DRAFT	MB	AR	JB	JB	23/08/18



SCALE: 1:8,000 @ A3 GDA 1994 MGA Zone 55

APA Group does not guarantee the accuracy or completeness of the map and does not make any warranty about the data. APA is not under any liability to the user for any loss or damage (including consequential loss or damage) which the user may suffer resulting from the use of this map. This map is confidential and the information and details contained in it are and remain the property of APA Group. © APA Group 2018.

\\pipeline\apps\GIS\Projects\Crib_PT_Pakenham_Pipeline\Maps\CPT-MAP-L-0054_PipelineConstructionMethod_0.1.mxd - 27 Aug 2018 - marbec



APA Transmission Pty Limited
 Phone: +61 2 9693 0000
 Web: www.apa.com.au
 Email: cribpointpakenham@apa.com.au

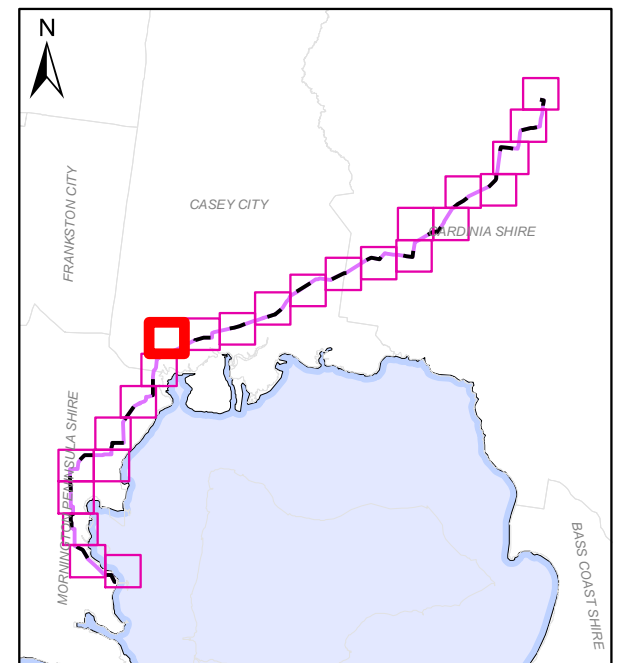
PROJECT: **CRIB POINT PAKENHAM PIPELINE**

TITLE: Pipeline Construction Methodology

SUBTITLE: Attachment 1D

DATE: 27/08/2018

DATA SOURCE:
 Service Layer Credits: Source: Esri, DigitalGlobe, GeoEye, Earthstar
 Geographics, CNES/Airbus DS, USDA, USGS, AeroGRID, IGN, and the GIS User
 Community
 Geoscience Australia 2016 Locations and Roads
 Copyright © The State of Victoria, Department of Environment, Land, Water &
 Planning 2018

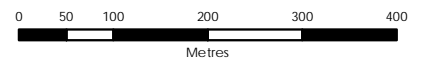


- LEGEND
- Kilometre Point
 - Open - Cut Construction
 - Trenchless Construction
 - Watercourse
 - Affected Parcels
 - Crib Point/Pakenham Facility

**ACCURATE AT
DATE OF ISSUE**

DOCUMENT NUMBER: CPT-MAP-L-0054 Page 10 of 24

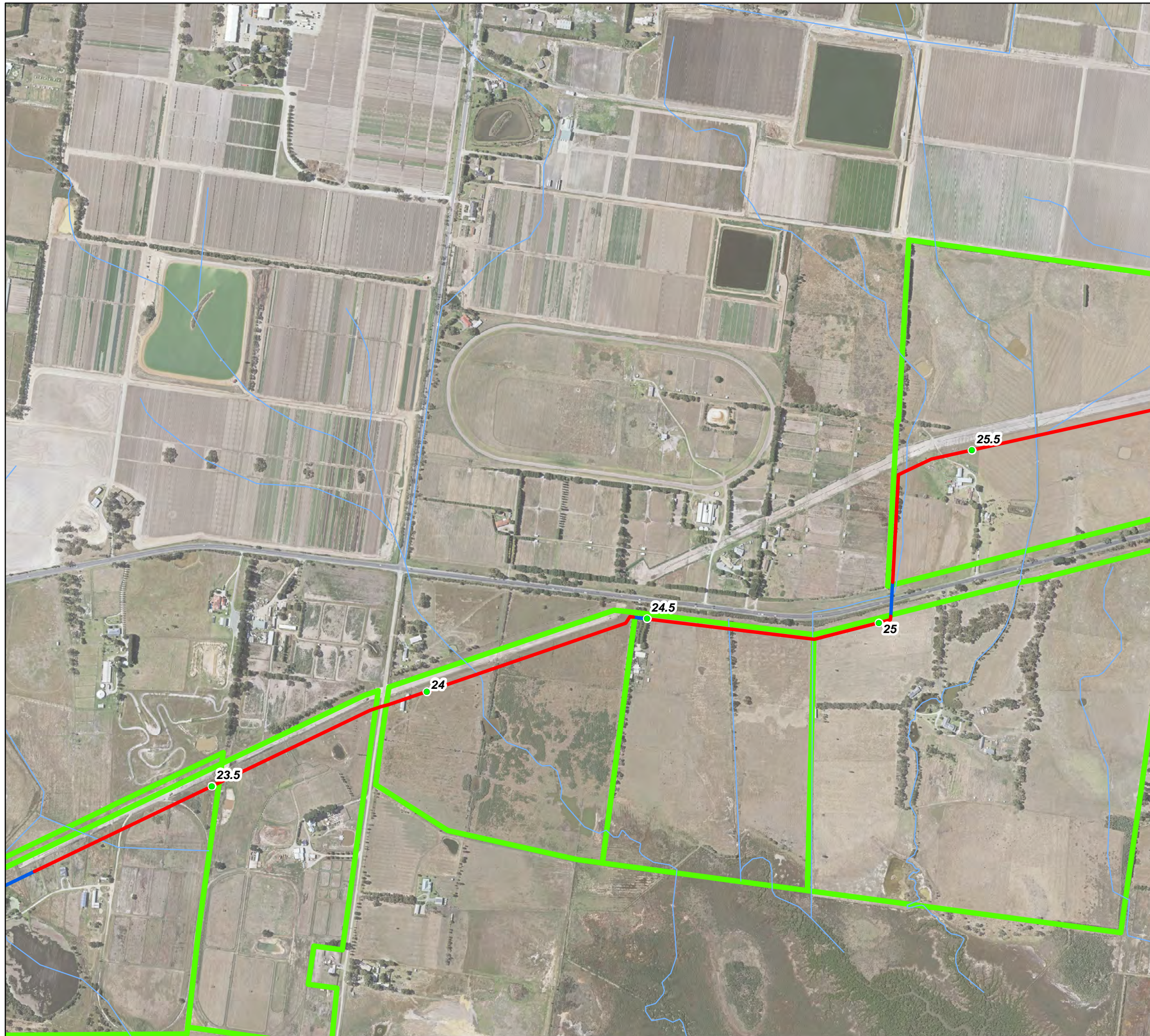
Revision	Description	Drawn	Checked	QC	Approved	Date
0.1	DRAFT	MB	AR	JB	JB	23/08/18



SCALE: 1:8,000 @ A3 GDA 1994 MGA Zone 55

APA Group does not guarantee the accuracy or completeness of the map and does not make any warranty about the data. APA is not under any liability to the user for any loss or damage (including consequential loss or damage) which the user may suffer resulting from the use of this map. This map is confidential and the information and details contained in it are and remain the property of APA Group. © APA Group 2018.

\\pipelinetrust\apps\GIS\Projects\Crib_P1_Pakenham_Pipeline\Maps\CPT-MAP-L-0054_PipelineConstructionMethod_0.1.mxd - 27 Aug 2018 - marbec



APA Transmission Pty Limited
 Phone: +61 2 9693 0000
 Web: www.apa.com.au
 Email: cribpointpakenham@apa.com.au

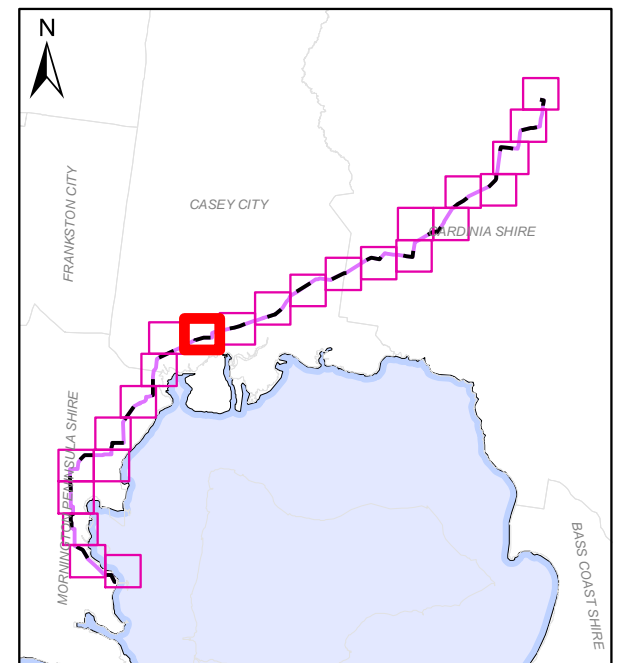
PROJECT: **CRIB POINT PAKENHAM PIPELINE**

TITLE: Pipeline Construction Methodology

SUBTITLE: Attachment 1D

DATE: 27/08/2018

DATA SOURCE:
 Service Layer Credits: Source: Esri, DigitalGlobe, GeoEye, Earthstar
 Geographics, CNES/Airbus DS, USDA, USGS, AeroGRID, IGN, and the GIS User
 Community
 Geoscience Australia 2016 Locations and Roads
 Copyright © The State of Victoria, Department of Environment, Land, Water &
 Planning 2018

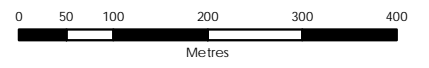


- LEGEND**
- Kilometre Point
 - Open - Cut Construction
 - Trenchless Construction
 - Watercourse
 - Affected Parcels
 - Crib Point/Pakenham Facility

**ACCURATE AT
DATE OF ISSUE**

DOCUMENT NUMBER: CPT-MAP-L-0054 Page 11 of 24

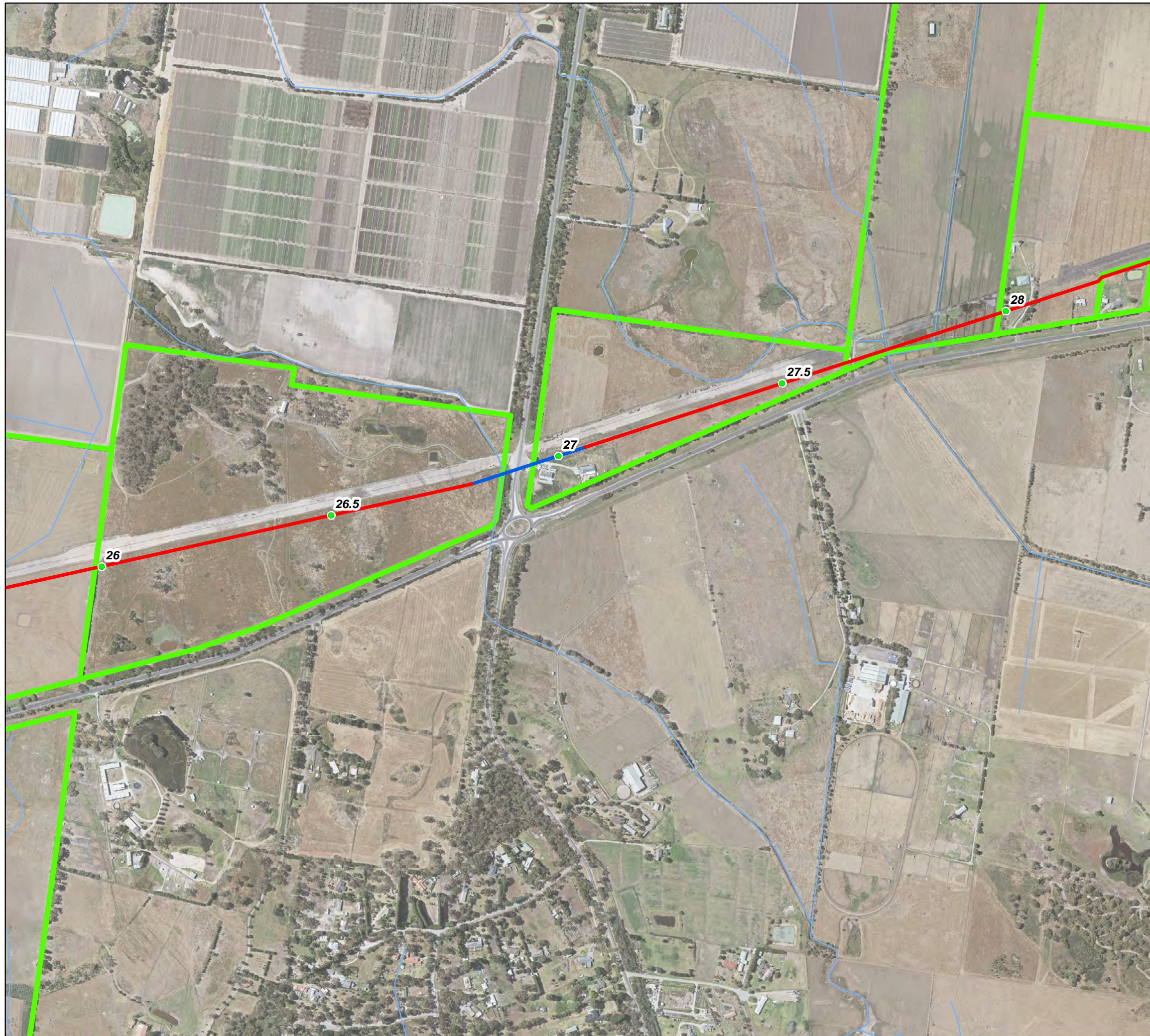
Revision	Description	Drawn	Checked	QC	Approved	Date
0.1	DRAFT	MB	AR	JB	JB	23/08/18



SCALE: 1:8,000 @ A3 GDA 1994 MGA Zone 55

APA Group does not guarantee the accuracy or completeness of the map and does not make any warranty about the data. APA is not under any liability to the user for any loss or damage (including consequential loss or damage) which the user may suffer resulting from the use of this map. This map is confidential and the information and details contained in it are and remain the property of APA Group. © APA Group 2018.

\\pipeline\apps\GIS\Projects\Crib_P1_Pakenham_Pipeline\Maps\CPT-MAP-L-0054_PipelineConstructionMethod_0.1.mxd - 27 Aug 2018 - marbec



APA Transmission Pty Limited
 Phone: +61 2 9693 0000
 Web: www.apa.com.au
 Email: cribpointpakenham@apa.com.au

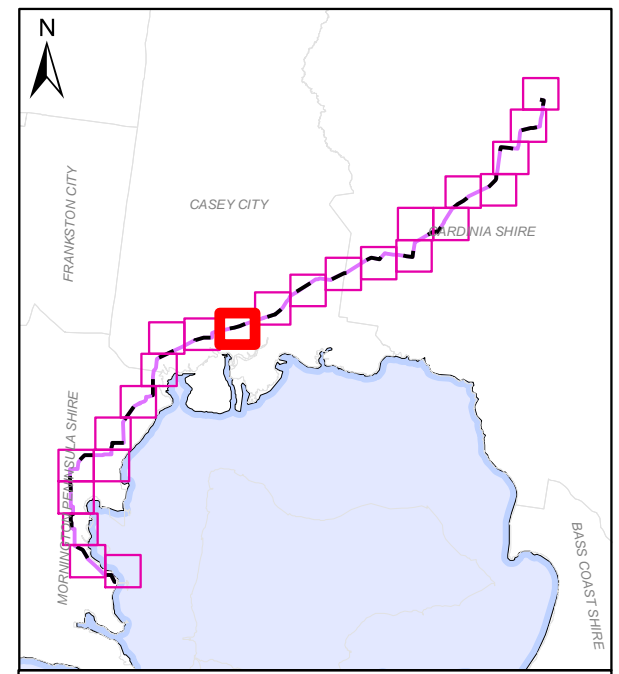
PROJECT: **CRIB POINT PAKENHAM PIPELINE**

TITLE: Pipeline Construction Methodology

SUBTITLE: Attachment 1D

DATE: 27/08/2018

DATA SOURCE:
 Service Layer Credits: Source: Esri, DigitalGlobe, GeoEye, Earthstar Geographics, CNES/Airbus DS, USDA, USGS, AeroGRID, IGN, and the GIS User Community
 Geoscience Australia 2016 Locations and Roads
 Copyright © The State of Victoria, Department of Environment, Land, Water & Planning 2018

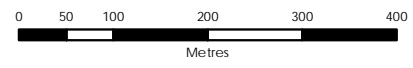


- LEGEND**
- Kilometre Point
 - Open - Cut Construction
 - Trenchless Construction
 - Watercourse
 - Affected Parcels
 - Crib Point/Pakenham Facility

ACCURATE AT DATE OF ISSUE

DOCUMENT NUMBER: CPT-MAP-L-0054 Page 12 of 24

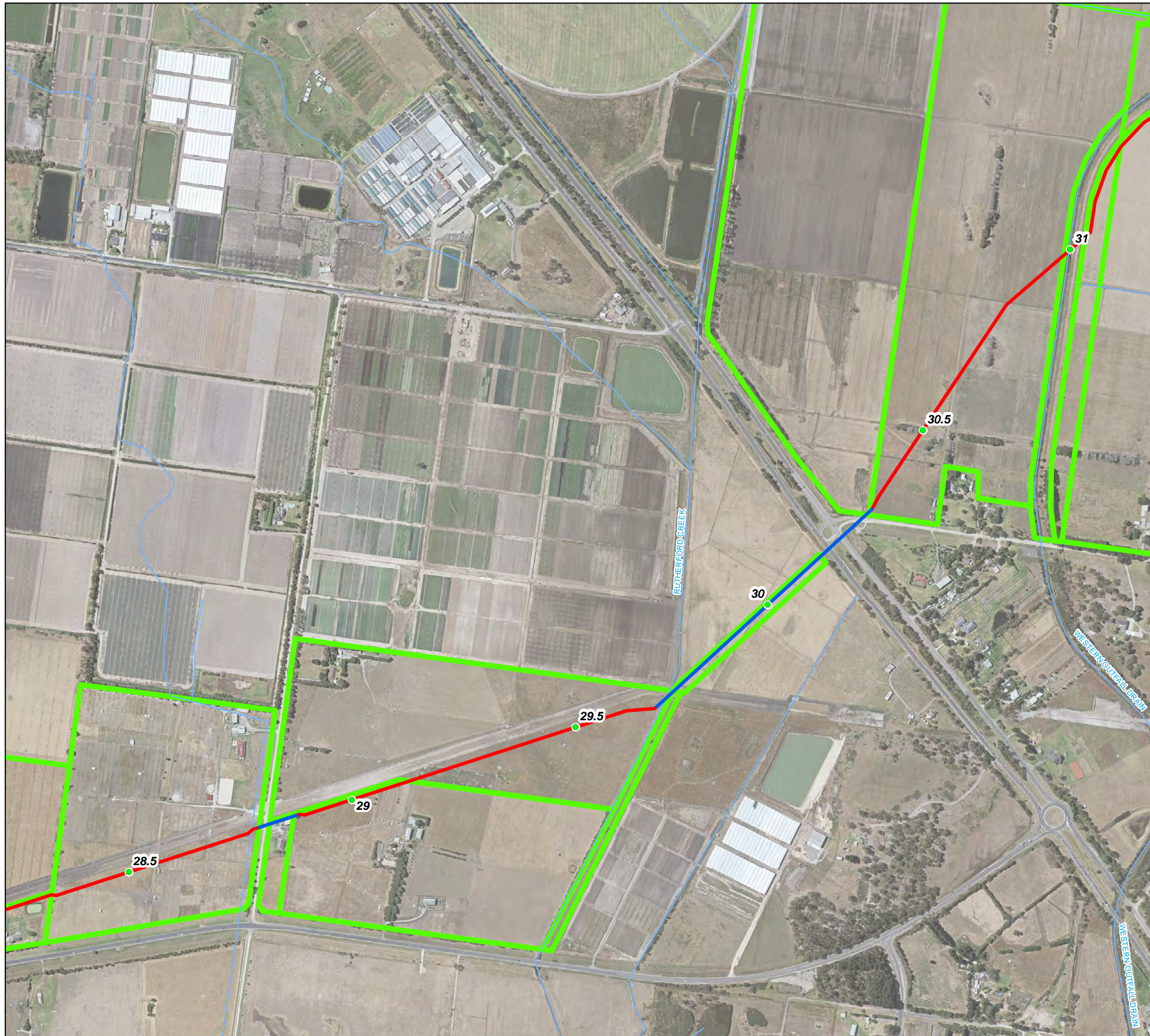
Revision	Description	Drawn	Checked	QC	Approved	Date
0.1	DRAFT	MB	AR	JB	JB	23/08/18



SCALE: 1:8,000 @ A3 GDA 1994 MGA Zone 55

APA Group does not guarantee the accuracy or completeness of the map and does not make any warranty about the data. APA is not under any liability to the user for any loss or damage (including consequential loss or damage) which the user may suffer resulting from the use of this map. This map is confidential and the information and details contained in it are and remain the property of APA Group. © APA Group 2018.

\\pipeline\apps\GIS\Projects\Crib_P1_Pakenham_Pipeline\Maps\CPT-MAP-L-0054_PipelineConstructionMethod_0.1.mxd - 27 Aug 2018 - marbec



APA Transmission Pty Limited
 Phone: +61 2 9693 0000
 Web: www.apa.com.au
 Email: cribpointpakenham@apa.com.au

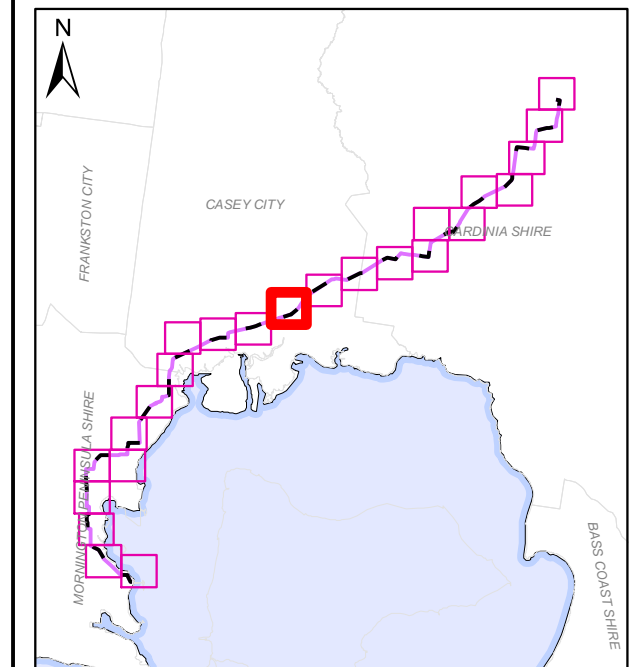
PROJECT: **CRIB POINT PAKENHAM PIPELINE**

TITLE: Pipeline Construction Methodolgy

SUBTITLE: Attachment 1D

DATE: 27/08/2018

DATA SOURCE:
 Service Layer Credits: Source: Esri, DigitalGlobe, GeoEye, Earthstar
 Geographics, CNES/Airbus DS, USDA, USGS, AeroGRID, IGN, and the GIS User
 Community
 Geoscience Australia 2016 Locations and Roads
 Copyright © The State of Victoria, Department of Environment, Land, Water &
 Planning 2018

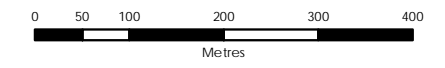


- LEGEND
- Kilometre Point
 - Open - Cut Construction
 - Trenchless Constrction
 - Watercourse
 - Affected Parcels
 - Crib Point/Pakenham Facility

**ACCURATE AT
DATE OF ISSUE**

DOCUMENT NUMBER: CPT-MAP-L-0054 Page 13 of 24

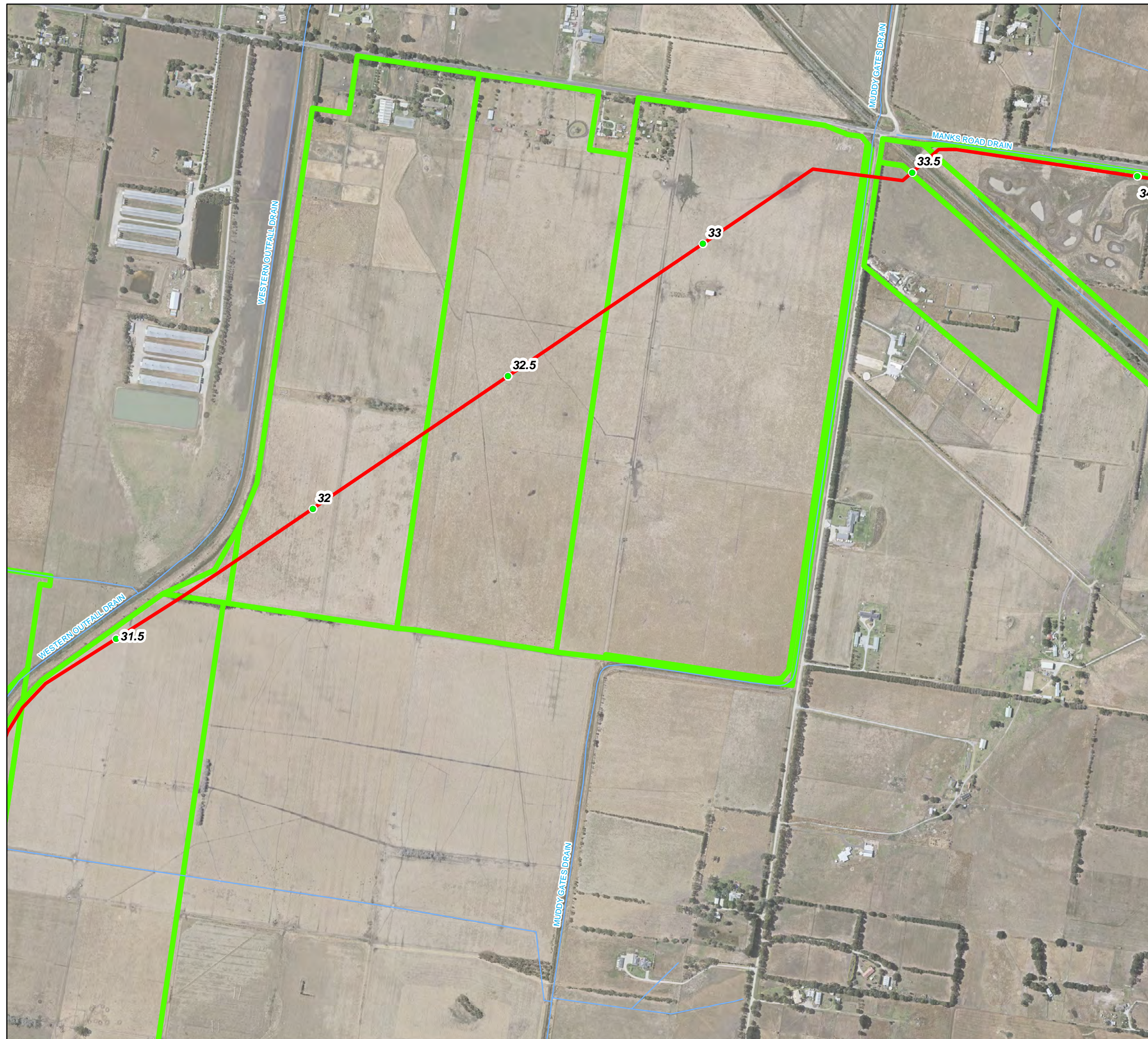
Revision	Description	Drawn	Checked	QC	Approved	Date
0.1	DRAFT	MB	AR	JB	JB	23/08/18



SCALE: 1:8,000 @ A3 GDA 1994 MGA Zone 55

APA Group does not guarantee the accuracy or completeness of the map and does not make any warranty about the data. APA is not under any liability to the user for any loss or damage (including consequential loss or damage) which the user may suffer resulting from the use of this map. This map is confidential and the information and details contained in it are and remain the property of APA Group. © APA Group 2018.

\\pipeline\apps\GIS\Projects\Crib_P1_Pakenham_Pipeline\Maps\CPT-MAP-L-0054_PipelineConstructionMethod_0.1.mxd - 27 Aug 2018 - marbec



APA Transmission Pty Limited
 Phone: +61 2 9693 0000
 Web: www.apa.com.au
 Email: cribpointpakenham@apa.com.au

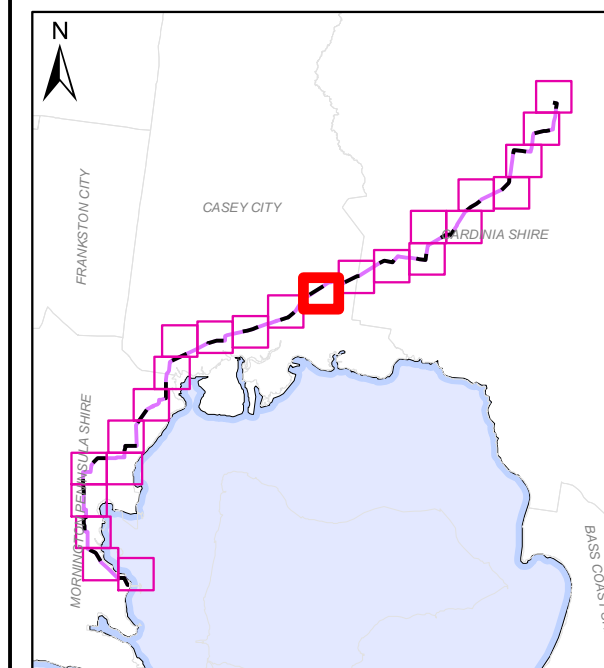
PROJECT: CRIB POINT PAKENHAM PIPELINE

TITLE: Pipeline Construction Methodology

SUBTITLE: Attachment 1D

DATE: 27/08/2018

DATA SOURCE:
 Service Layer Credits: Source: Esri, DigitalGlobe, GeoEye, Earthstar Geographics, CNES/Airbus DS, USDA, USGS, AeroGRID, IGN, and the GIS User Community
 Geoscience Australia 2016 Locations and Roads
 Copyright © The State of Victoria, Department of Environment, Land, Water & Planning 2018

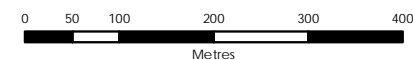


- LEGEND
- Kilometre Point
 - Open - Cut Construction
 - Trenchless Construction
 - Watercourse
 - Affected Parcels
 - Crib Point/Pakenham Facility

**ACCURATE AT
DATE OF ISSUE**

DOCUMENT NUMBER: CPT-MAP-L-0054 Page 14 of 24

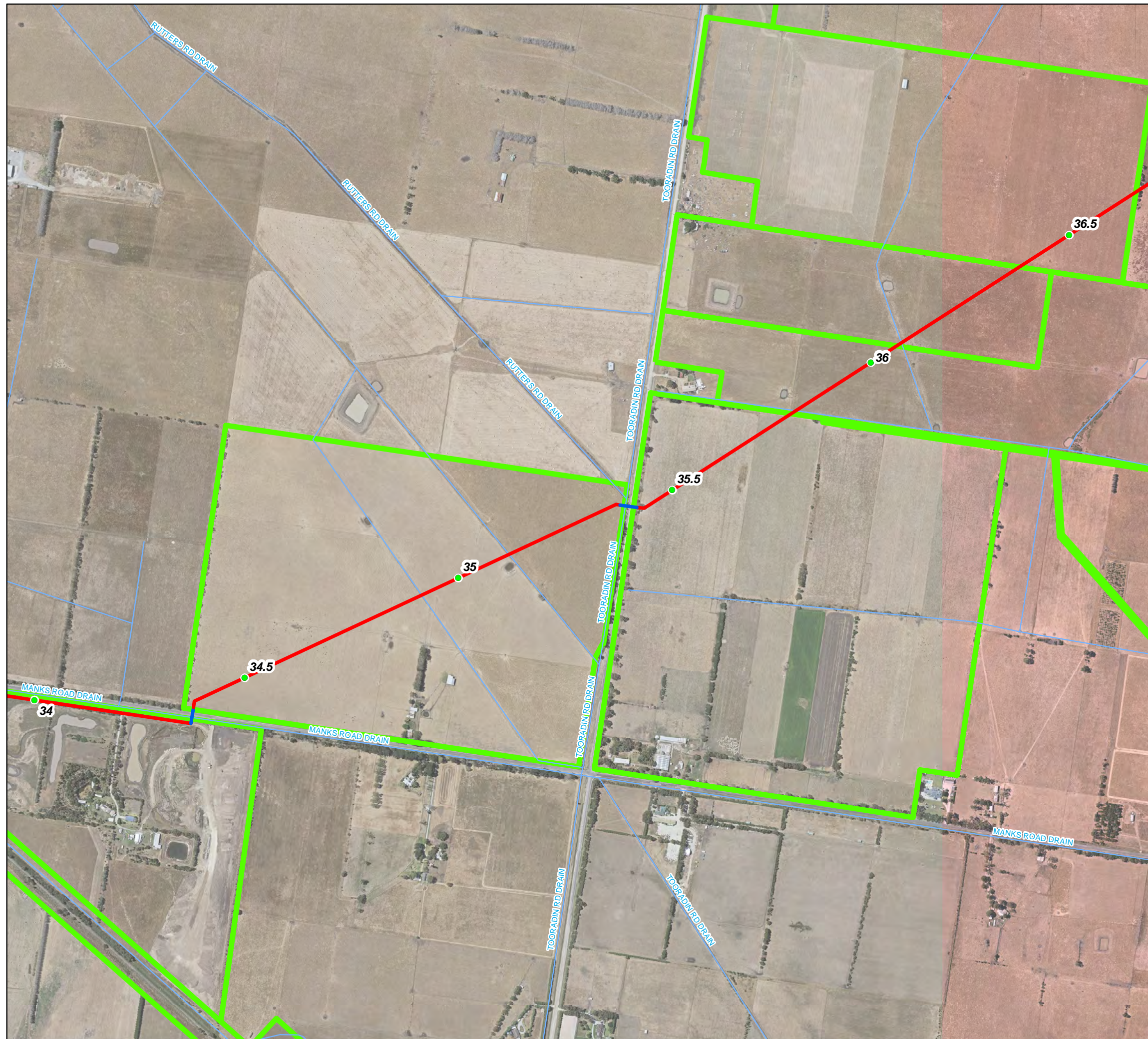
Revision	Description	Drawn	Checked	QC	Approved	Date
0.1	DRAFT	MB	AR	JB	JB	23/08/18



SCALE: 1:8,000 @ A3 GDA 1994 MGA Zone 55

APA Group does not guarantee the accuracy or completeness of the map and does not make any warranty about the data. APA is not under any liability to the user for any loss or damage (including consequential loss or damage) which the user may suffer resulting from the use of this map. This map is confidential and the information and details contained in it are and remain the property of APA Group. © APA Group 2018.

\\pipeline\apps\GIS\Projects\Crib_P1_Pakenham_Pipeline\Maps\CPT-MAP-L-0054_PipelineConstructionMethod_0.1.mxd - 27 Aug 2018 - marbec



APA Transmission Pty Limited
 Phone: +61 2 9693 0000
 Web: www.apa.com.au
 Email: cribpointpakenham@apa.com.au



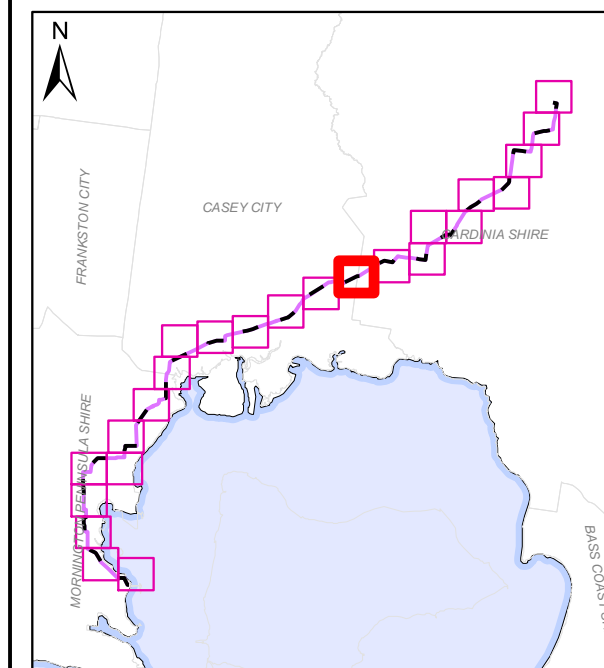
PROJECT: **CRIB POINT PAKENHAM PIPELINE**

TITLE: Pipeline Construction Methodology

SUBTITLE: Attachment 1D

DATE: 27/08/2018

DATA SOURCE:
 Service Layer Credits: Source: Esri, DigitalGlobe, GeoEye, Earthstar
 Geographics, CNES/Airbus DS, USDA, USGS, AeroGRID, IGN, and the GIS User
 Community
 Geoscience Australia 2016 Locations and Roads
 Copyright © The State of Victoria, Department of Environment, Land, Water &
 Planning 2018



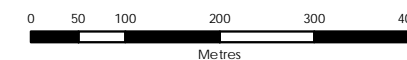
LEGEND

- Kilometre Point
- Open - Cut Construction
- Trenchless Construction
- Watercourse
- Affected Parcels
- Crib Point/Pakenham Facility

**ACCURATE AT
DATE OF ISSUE**

DOCUMENT NUMBER: CPT-MAP-L-0054 Page 15 of 24

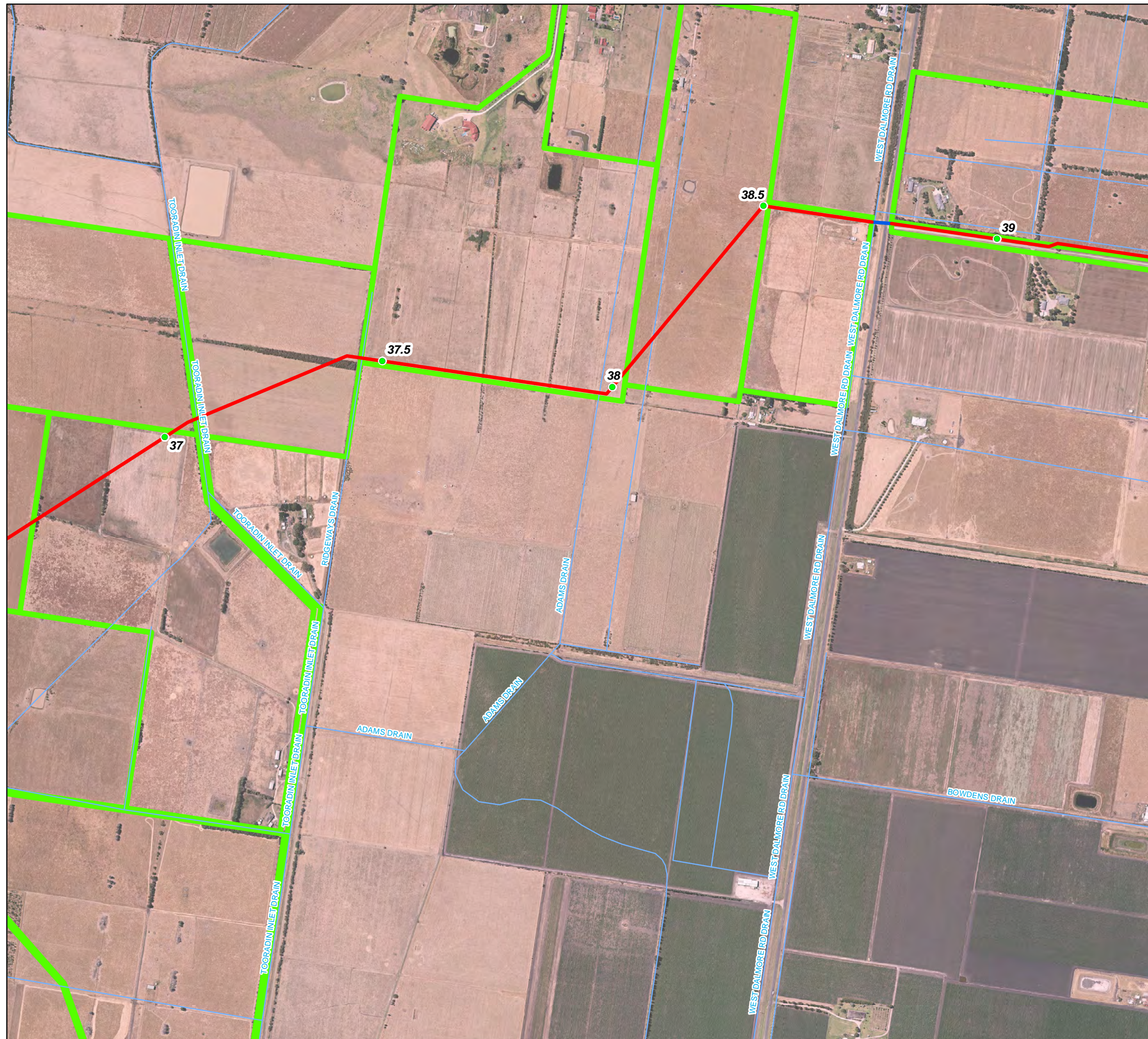
Revision	Description	Drawn	Checked	QC	Approved	Date
0.1	DRAFT	MB	AR	JB	JB	23/08/18



SCALE: 1:8,000 @ A3 GDA 1994 MGA Zone 55

APA Group does not guarantee the accuracy or completeness of the map and does not make any warranty about the data. APA is not under any liability to the user for any loss or damage (including consequential loss or damage) which the user may suffer resulting from the use of this map. This map is confidential and the information and details contained in it are and remain the property of APA Group. © APA Group 2018.

\\pipeline\apps\GIS\Projects\Crib_P1_Pakenham_Pipeline\Maps\CPT-MAP-L-0054_PipelineConstructionMethod_0.1.mxd - 27 Aug 2018 - marbec



APA Transmission Pty Limited
 Phone: +61 2 9693 0000
 Web: www.apa.com.au
 Email: cribpointpakenham@apa.com.au

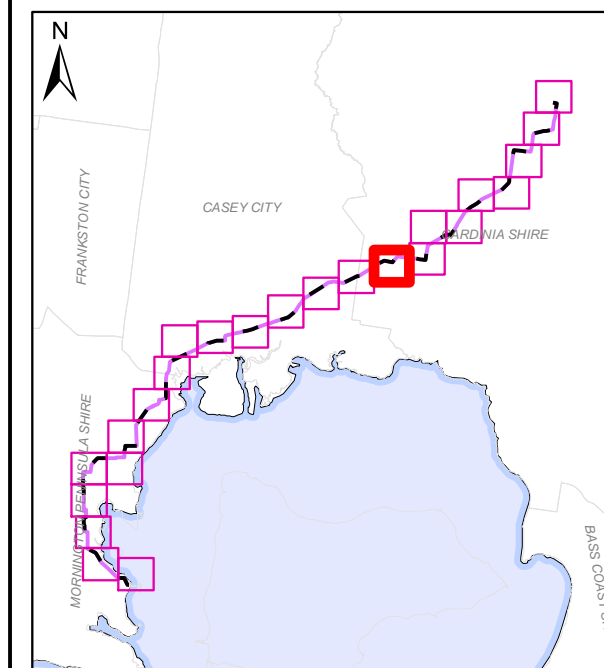
PROJECT: **CRIB POINT PAKENHAM PIPELINE**

TITLE: Pipeline Construction Methodology

SUBTITLE: Attachment 1D

DATE: 27/08/2018

DATA SOURCE:
 Service Layer Credits: Source: Esri, DigitalGlobe, GeoEye, Earthstar
 Geographics, CNES/Airbus DS, USDA, USGS, AeroGRID, IGN, and the GIS User
 Community
 Geoscience Australia 2016 Locations and Roads
 Copyright © The State of Victoria, Department of Environment, Land, Water &
 Planning 2018

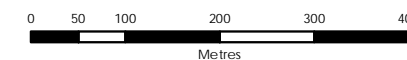


- LEGEND**
- Kilometre Point
 - Open - Cut Construction
 - Trenchless Construction
 - Watercourse
 - Affected Parcels
 - Crib Point/Pakenham Facility

**ACCURATE AT
DATE OF ISSUE**

DOCUMENT NUMBER: CPT-MAP-L-0054 Page 16 of 24

Revision	Description	Drawn	Checked	QC	Approved	Date
0.1	DRAFT	MB	AR	JB	JB	23/08/18



SCALE: 1:8,000 @ A3 GDA 1994 MGA Zone 55

APA Group does not guarantee the accuracy or completeness of the map and does not make any warranty about the data. APA is not under any liability to the user for any loss or damage (including consequential loss or damage) which the user may suffer resulting from the use of this map. This map is confidential and the information and details contained in it are and remain the property of APA Group. © APA Group 2018.

\\pipeline\apps\GIS\Projects\Crib_PT_Pakenham_Pipeline\Maps\CPT-MAP-L-0054_PipelineConstructionMethod_0.1.mxd - 27 Aug 2018 - marbec