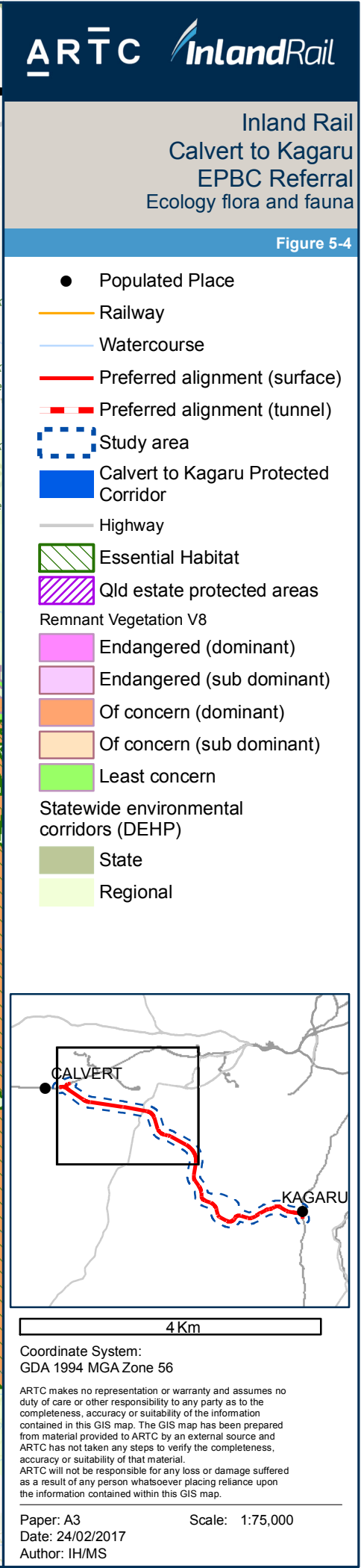
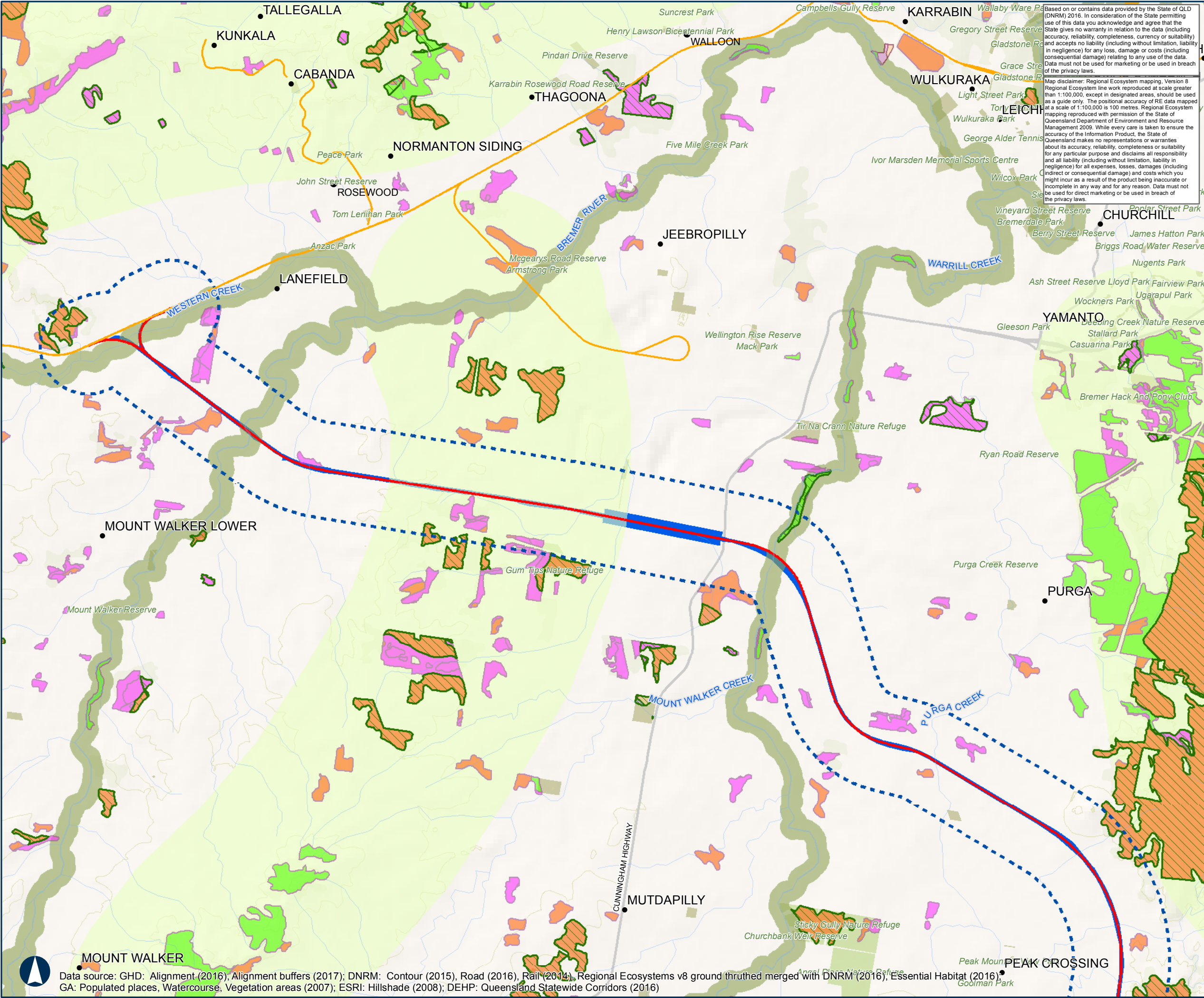


Attachment 7: Ecology Mapping



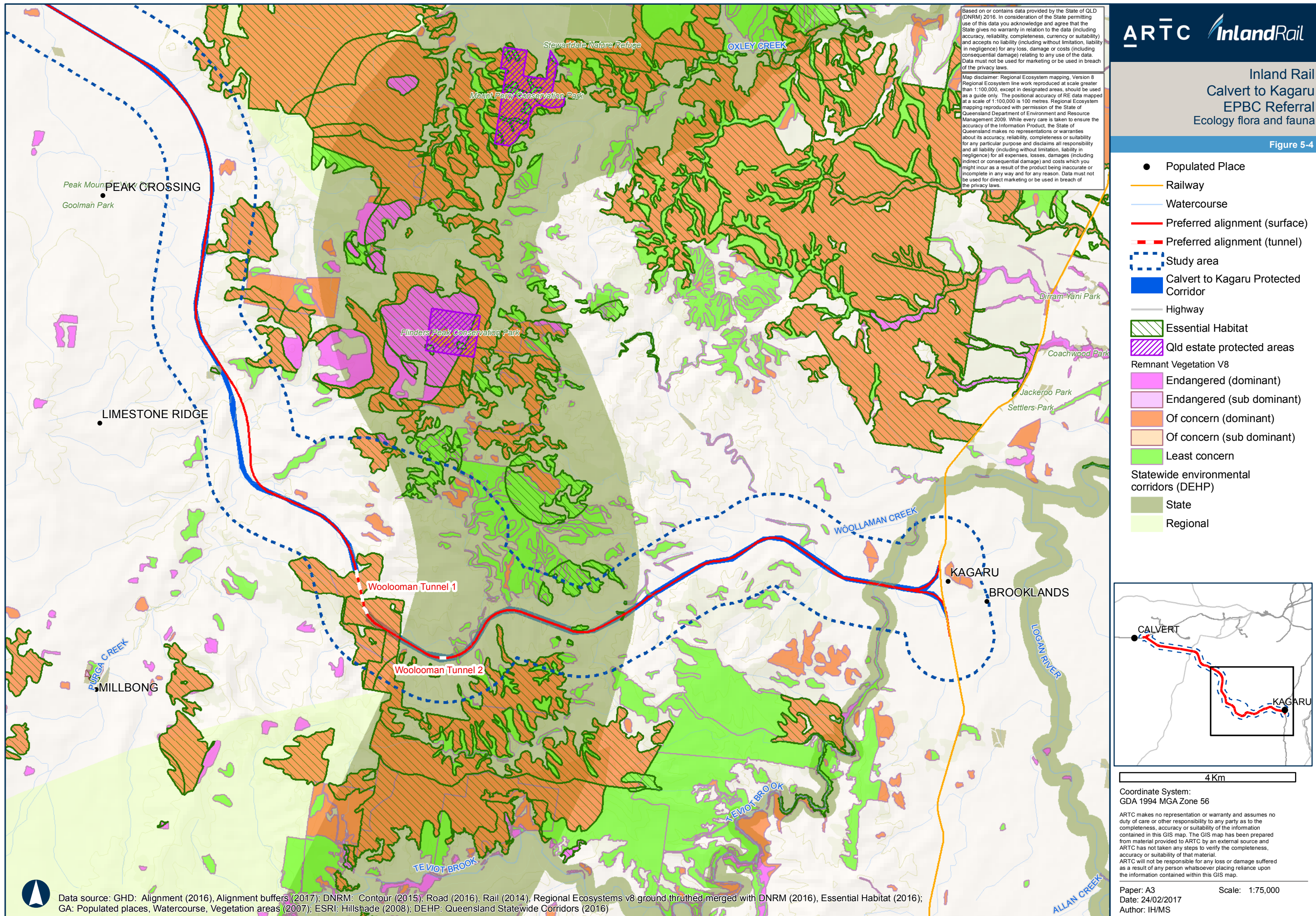
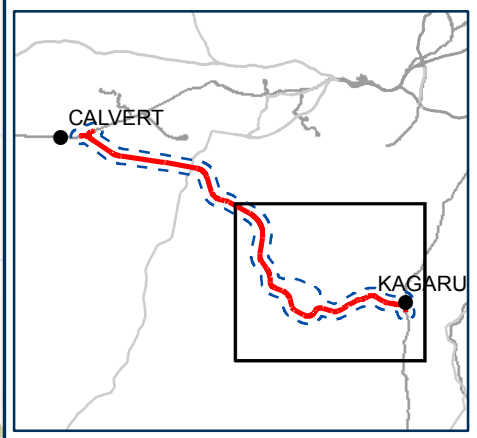


Figure 5-4

- Populated Place
- Railway
- Watercourse
- Preferred alignment (surface)
- Preferred alignment (tunnel)
- Study area
- Calvert to Kagaru Protected Corridor
- Highway
- Essential Habitat
- Qld estate protected areas
- Remnant Vegetation V8
 - Endangered (dominant)
 - Endangered (sub dominant)
 - Of concern (dominant)
 - Of concern (sub dominant)
 - Least concern
- Statewide environmental corridors (DEHP)
 - State
 - Regional



4 Km

Coordinate System:
GDA 1994 MGA Zone 56

ARTC makes no representation or warranty and assumes no duty of care or other responsibility to any party as to the completeness, accuracy or suitability of the information contained in this GIS map. The GIS map has been prepared from material provided to ARTC by an external source and ARTC has not taken any steps to verify the completeness, accuracy or suitability of that material. ARTC will not be responsible for any loss or damage suffered as a result of any person whatsoever placing reliance upon the information contained within this GIS map.

Paper: A3
Date: 24/02/2017
Author: IH/MS

Scale: 1:75,000