

# Native vegetation removal report

This report provides information to support an application to remove, destroy or lop native vegetation in accordance with the *Guidelines for the removal, destruction or lopping of native vegetation*. The report **is not an assessment by DELWP** of the proposed native vegetation removal. Native vegetation information and offset requirements have been determined using spatial data provided by the applicant or their consultant.

Date of issue: 16/10/2018

Report ID: EHP\_2018\_254

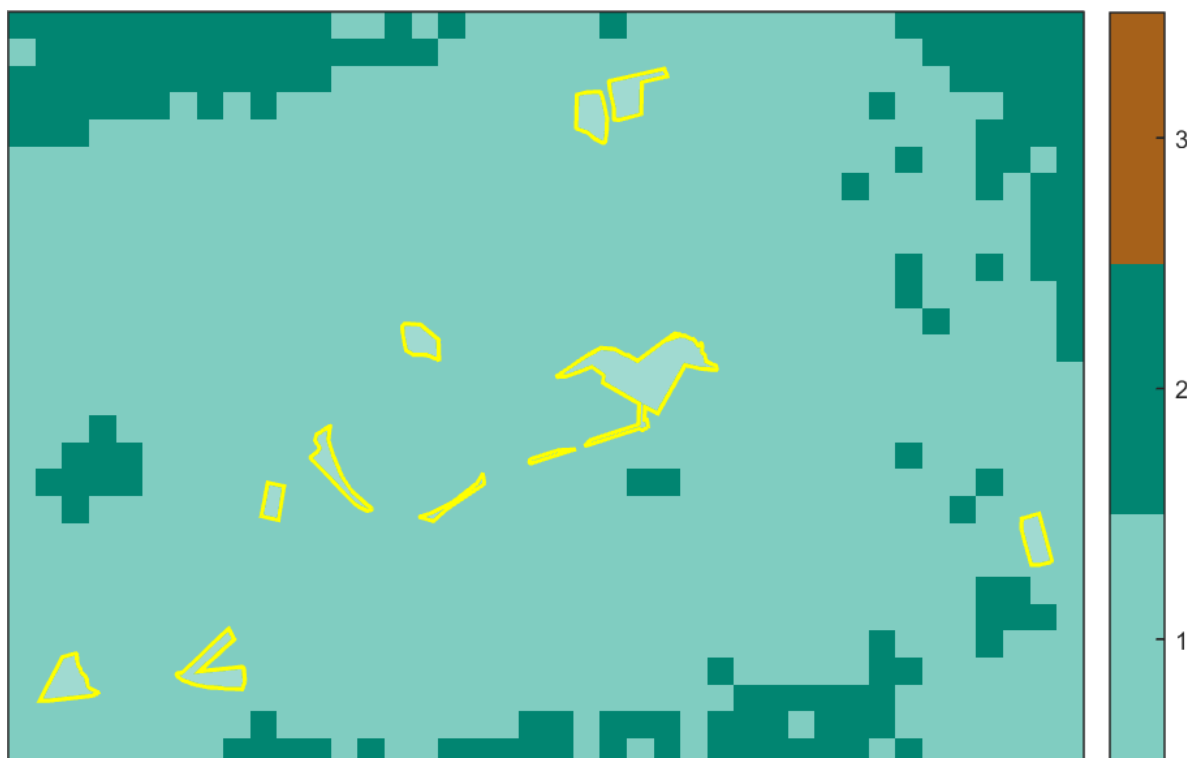
Time of issue: 11:45 am

Project ID EHP11344\_ToolernVale

## Assessment pathway

Assessment pathway	Detailed Assessment Pathway
Extent including past and proposed	1.327 ha
Extent of past removal	0.000 ha
Extent of proposed removal	1.327 ha
No. Large trees proposed to be removed	0
Location category of proposed removal	Location 1 The native vegetation is not in an area mapped as an endangered Ecological Vegetation Class (as per the statewide EVC map), sensitive wetland or coastal area. Removal of less than 0.5 hectares in this location will not have a significant impact on any habitat for a rare or threatened species

### 1. Location map



## Offset requirements if a permit is granted

Any approval granted will include a condition to obtain an offset that meets the following requirements:

<b>General offset amount<sup>1</sup></b>	0.411 general habitat units
Vicinity	Port Phillip and Westernport Catchment Management Authority (CMA) or Melton City Council
Minimum strategic biodiversity value score <sup>2</sup>	0.365
Large trees	0 large trees

NB: values within tables in this document may not add to the totals shown above due to rounding

Appendix 1 includes information about the native vegetation to be removed

Appendix 2 includes information about the rare or threatened species mapped at the site.

Appendix 3 includes maps showing native vegetation to be removed and extracts of relevant species habitat importance maps

---

<sup>1</sup> The general offset amount required is the sum of all general habitat units in Appendix 1.

<sup>2</sup> Minimum strategic biodiversity score is 80 per cent of the weighted average score across habitat zones where a general offset is required

## Next steps

Any proposal to remove native vegetation must meet the application requirements of the Detailed Assessment Pathway and it will be assessed under the Detailed Assessment Pathway.

If you wish to remove the mapped native vegetation you are required to apply for a permit from your local council. Council will refer your application to DELWP for assessment, as required. **This report is not a referral assessment by DELWP.**

This *Native vegetation removal report* must be submitted with your application for a permit to remove, destroy or lop native vegetation.

Refer to the *Guidelines for the removal, destruction or lopping of native vegetation* (the Guidelines) for a full list of application requirements. This report provides information that meets the following application requirements:

- The assessment pathway and reason for the assessment pathway
- A description of the native vegetation to be removed (partly met)
- Maps showing the native vegetation and property (partly met)
- Information about the impacts on rare or threatened species.
- The offset requirements determined in accordance with section 5 of the Guidelines that apply if approval is granted to remove native vegetation.

Additional application requirements must be met including:

- Topographical and land information
- Recent dated photographs
- Details of past native vegetation removal
- An avoid and minimise statement
- A copy of any Property Vegetation Plan that applies
- A defensible space statement as applicable
- A statement about the Native Vegetation Precinct Plan as applicable
- A site assessment report including a habitat hectare assessment of any patches of native vegetation and details of trees
- An offset statement that explains that an offset has been identified and how it will be secured.

---

© The State of Victoria Department of Environment, Land, Water and Planning  
Melbourne 2018

This work is licensed under a Creative Commons Attribution 4.0 International licence. You are free to re-use the work under that licence, on the condition that you credit the State of Victoria as author. The licence does not apply to any images, photographs or branding, including the Victorian Coat of Arms, the Victorian Government logo and the Department of Environment, Land, Water and Planning logo. To view a copy of this licence, visit <http://creativecommons.org/licenses/by/3.0/au/deed.en>

Authorised by the Victorian Government, 8 Nicholson Street, East Melbourne.

For more information contact the DELWP Customer Service Centre 136 186

[www.delwp.vic.gov.au](http://www.delwp.vic.gov.au)

### Disclaimer

This publication may be of assistance to you but the State of Victoria and its employees do not guarantee that the publication is without flaw of any kind or is wholly appropriate for your particular purposes and therefore disclaims all liability for any error, loss or other consequence which may arise from you relying on any information in this publication.

Obtaining this publication does not guarantee that an application will meet the requirements of Clauses 52.16 or 52.17 of the Victoria Planning Provisions and Victorian planning schemes or that a permit to remove native vegetation will be granted.

Notwithstanding anything else contained in this publication, you must ensure that you comply with all relevant laws, legislation, awards or orders and that you obtain and comply with all permits, approvals and the like that affect, are applicable or are necessary to undertake any action to remove, lop or destroy or otherwise deal with any native vegetation or that apply to matters within the scope of Clauses 52.16 or 52.17 of the Victoria Planning Provisions and Victorian planning schemes.

## Appendix 1: Description of native vegetation to be removed

The species-general offset test was applied to your proposal. This test determines if the proposed removal of native vegetation has a proportional impact on any rare or threatened species habitats above the species offset threshold. The threshold is set at 0.005 per cent of the mapped habitat value for a species. When the proportional impact is above the species offset threshold a species offset is required. This test is done for all species mapped at the site. Multiple species offsets will be required if the species offset threshold is exceeded for multiple species.

Where a zone requires species offset(s), the species habitat units for each species in that zone is calculated by the following equation in accordance with the Guidelines:

$$\text{Species habitat units} = \text{extent} \times \text{condition} \times \text{species landscape factor} \times 2, \text{ where the species landscape factor} = 0.5 + (\text{habitat importance score}/2)$$

The species offset amount(s) required is the sum of all species habitat units per zone

Where a zone does not require a species offset, the general habitat units in that zone is calculated by the following equation in accordance with the Guidelines:

$$\text{General habitat units} = \text{extent} \times \text{condition} \times \text{general landscape factor} \times 1.5, \text{ where the general landscape factor} = 0.5 + (\text{strategic biodiversity value score}/2)$$

The general offset amount required is the sum of all general habitat units per zone.

### Native vegetation to be removed

Information provided by or on behalf of the applicant in a GIS file							Information calculated by EnSym					
Zone	Type	BioEVC	BioEVC conservation status	Large tree(s)	Partial removal	Condition score	Polygon Extent	Extent without overlap	SBV score	HI score	Habitat units	Offset type
1-A	Patch	vvp_0132_61	Endangered	0	no	0.240	0.146	0.146	0.470		0.039	General
2-A	Patch	vvp_0132_61	Endangered	0	no	0.240	0.124	0.124	0.470		0.033	General
3-D	Patch	vvp_0132_61	Endangered	0	no	0.240	0.096	0.096	0.470		0.026	General
4-C	Patch	vvp_0132_61	Endangered	0	no	0.320	0.030	0.030	0.470		0.010	General
5-C	Patch	vvp_0132_61	Endangered	0	no	0.320	0.088	0.088	0.270		0.027	General
6-D	Patch	vvp_0132_61	Endangered	0	no	0.240	0.122	0.122	0.470		0.032	General
7-D	Patch	vvp_0132_61	Endangered	0	no	0.240	0.107	0.107	0.470		0.028	General
8-D	Patch	vvp_0132_61	Endangered	0	no	0.240	0.003	0.003	0.470		0.001	General
9-C	Patch	vvp_0132_61	Endangered	0	no	0.320	0.015	0.015	0.470		0.005	General
10-C	Patch	vvp_0132_61	Endangered	0	no	0.320	0.464	0.464	0.470		0.164	General
11-C	Patch	vvp_0132_61	Endangered	0	no	0.320	0.081	0.081	0.470		0.029	General

Information provided by or on behalf of the applicant in a GIS file							Information calculated by EnSym					
Zone	Type	BioEVC	BioEVC conservation status	Large tree(s)	Partial removal	Condition score	Polygon Extent	Extent without overlap	SBV score	HI score	Habitat units	Offset type
12-C	Patch	vvp_0132_61	Endangered	0	no	0.320	0.051	0.051	0.470		0.018	General

## Appendix 2: Information about impacts to rare or threatened species' habitats on site

This table lists all rare or threatened species' habitats mapped at the site.

Species common name	Species scientific name	Species number	Conservation status	Group	Habitat impacted	% habitat value affected
Small Golden Moths	<i>Diuris basaltica</i>	501473	Endangered	Dispersed	Habitat importance map	0.0000
Heath Spear-grass	<i>Austrostipa exilis</i>	503984	Rare	Dispersed	Habitat importance map	0.0000
Fragrant Saltbush	<i>Rhagodia parabolica</i>	502929	Rare	Dispersed	Habitat importance map	0.0000
Basalt Podolepis	<i>Podolepis linearifolia</i>	504658	Endangered	Dispersed	Habitat importance map	0.0000
Button Wrinklewort	<i>Rutidosia leptorhynchoides</i>	502982	Endangered	Dispersed	Habitat importance map	0.0000
Clumping Golden Moths	<i>Diuris gregaria</i>	504887	Endangered	Dispersed	Habitat importance map	0.0000
Large-headed Fireweed	<i>Senecio macrocarpus</i>	503116	Endangered	Dispersed	Habitat importance map	0.0000
Narrow Goodenia	<i>Goodenia macbarronii</i>	501513	Vulnerable	Dispersed	Habitat importance map	0.0000
Spiny Rice-flower	<i>Pimelea spinescens</i> subsp. <i>spinescens</i>	504823	Endangered	Dispersed	Habitat importance map	0.0000
Plump Swamp Wallaby-grass	<i>Amphibromus pithogastrus</i>	503624	Endangered	Dispersed	Habitat importance map	0.0000
Velvet Daisy-bush	<i>Olearia pannosa</i> subsp. <i>cardiophylla</i>	502317	Vulnerable	Dispersed	Habitat importance map	0.0000
Austral Tobacco	<i>Nicotiana suaveolens</i>	502275	Rare	Dispersed	Habitat importance map	0.0000
Brackish Plains Buttercup	<i>Ranunculus diminutus</i>	504314	Rare	Dispersed	Habitat importance map	0.0000
Yellow Burr-daisy	<i>Calotis lappulacea</i>	500598	Rare	Dispersed	Habitat importance map	0.0000
Small Scurf-pea	<i>Cullen parvum</i>	502773	Endangered	Dispersed	Habitat importance map	0.0000
Cane Spear-grass	<i>Austrostipa breviglumis</i>	503268	Rare	Dispersed	Habitat importance map	0.0000
Tough Scurf-pea	<i>Cullen tenax</i>	502776	Endangered	Dispersed	Habitat importance map	0.0000
Pale-flower Crane's-bill	<i>Geranium</i> sp. 3	505344	Rare	Dispersed	Habitat importance map	0.0000
Rye Beetle-grass	<i>Tripogon loliiformis</i>	503455	Rare	Dispersed	Habitat importance map	0.0000

Golden Cowslips	<i>Diuris behrii</i>	501061	Vulnerable	Dispersed	Habitat importance map	0.0000
Dark Wire-grass	<i>Aristida calycina</i> var. <i>calycina</i>	503630	Rare	Dispersed	Habitat importance map	0.0000
Arching Flax-lily	<i>Dianella</i> sp. aff. <i>longifolia</i> ( <i>Benambra</i> )	505560	Vulnerable	Dispersed	Habitat importance map	0.0000
Pale Swamp Everlasting	<i>Coronidium gunnianum</i>	504655	Vulnerable	Dispersed	Habitat importance map	0.0000
Purple Diuris	<i>Diuris punctata</i>	501084	Vulnerable	Dispersed	Habitat importance map	0.0000
Rosemary Grevillea	<i>Grevillea rosmarinifolia</i> subsp. <i>rosmarinifolia</i>	504066	Rare	Dispersed	Habitat importance map	0.0000
Late-flower Flax-lily	<i>Dianella tarda</i>	505085	Vulnerable	Dispersed	Habitat importance map	0.0000
Branching Groundsel	<i>Senecio cunninghamii</i> var. <i>cunninghamii</i>	503104	Rare	Dispersed	Habitat importance map	0.0000
Small Milkwort	<i>Comesperma polygaloides</i>	500798	Vulnerable	Dispersed	Habitat importance map	0.0000
Silky Kidney-weed	<i>Dichondra</i> sp. 1	505786	Rare	Dispersed	Habitat importance map	0.0000
Dwarf Brooklime	<i>Gratiola pumilo</i>	503753	Rare	Dispersed	Habitat importance map	0.0000
Waterbush	<i>Myoporum montanum</i>	502240	Rare	Dispersed	Habitat importance map	0.0000
Hairy Tails	<i>Ptilotus erubescens</i>	502825	Vulnerable	Dispersed	Habitat importance map	0.0000
Clover Glycine	<i>Glycine latrobeana</i>	501456	Vulnerable	Dispersed	Habitat importance map	0.0000
Buloke Mistletoe	<i>Amyema linophylla</i> subsp. <i>orientalis</i>	500217	Vulnerable	Dispersed	Habitat importance map	0.0000
Buloke	<i>Allocasuarina luehmannii</i>	500678	Endangered	Dispersed	Habitat importance map	0.0000

#### Habitat group

- Highly localised habitat means there is 2000 hectares or less mapped habitat for the species
- Dispersed habitat means there is more than 2000 hectares of mapped habitat for the species

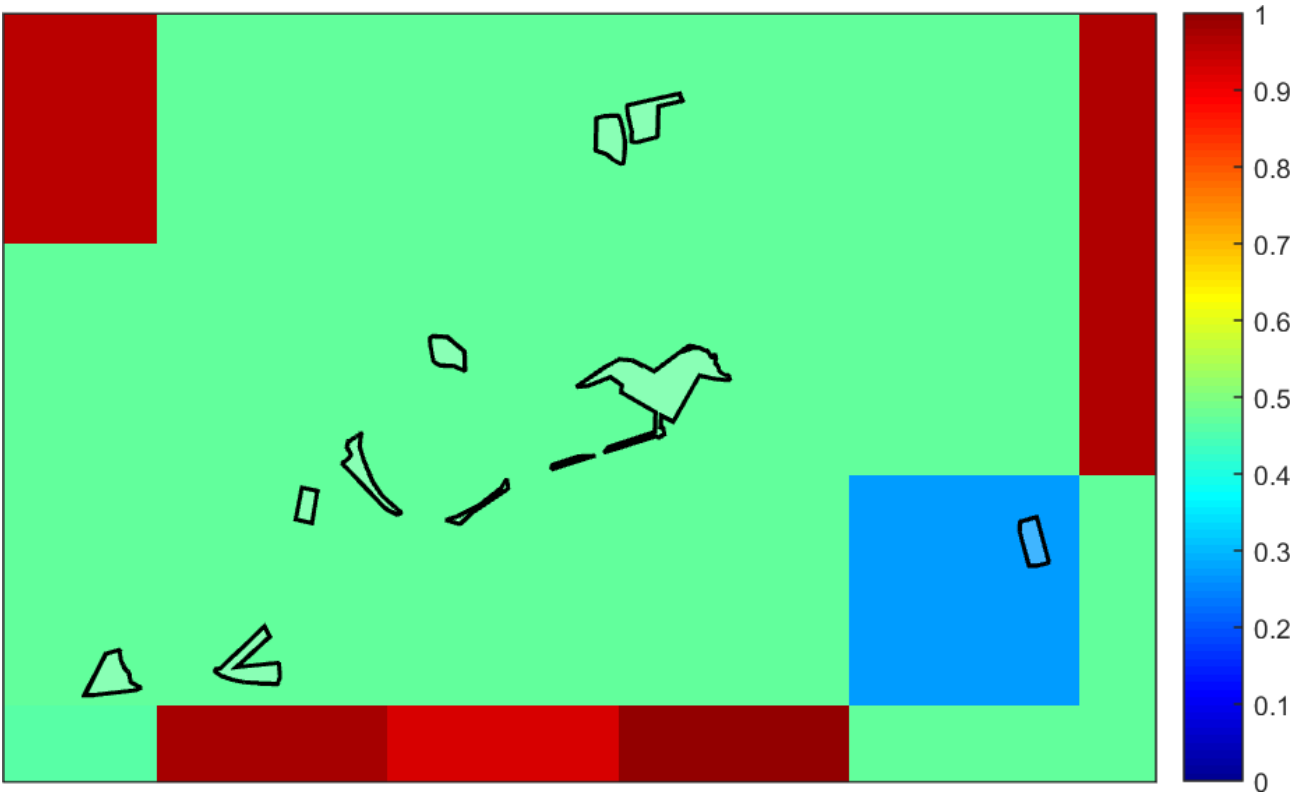
#### Habitat impacted

- Habitat importance maps are the maps defined in the Guidelines that include all the mapped habitat for a rare or threatened species
- Top ranking maps are the maps defined in the Guidelines that depict the important areas of a dispersed species habitat, developed from the highest habitat importance scores in dispersed species habitat maps and selected VBA records
- Selected VBA record is an area in Victoria that represents a large population, roosting or breeding site etc.

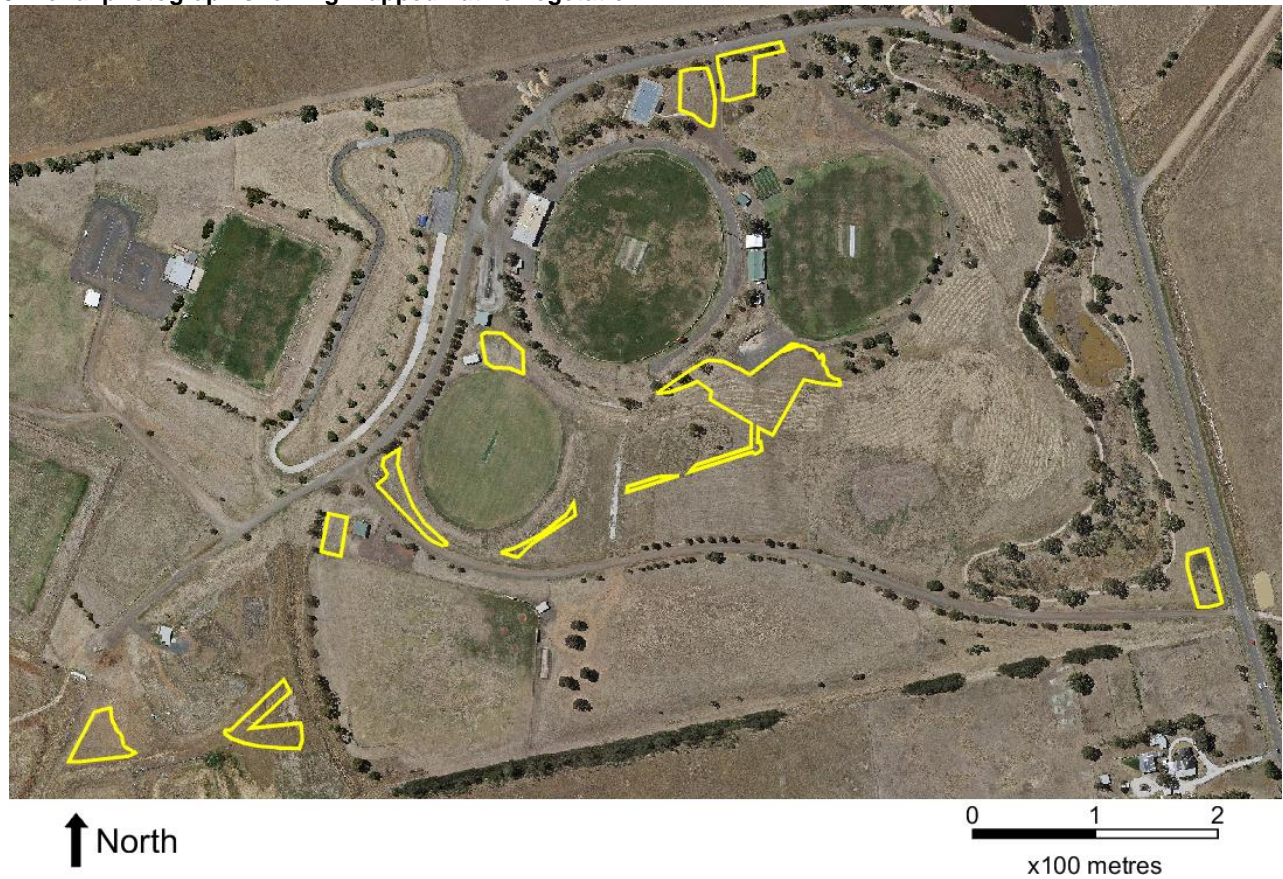


Appendix 3 – Images of mapped native vegetation

2. Strategic biodiversity values map

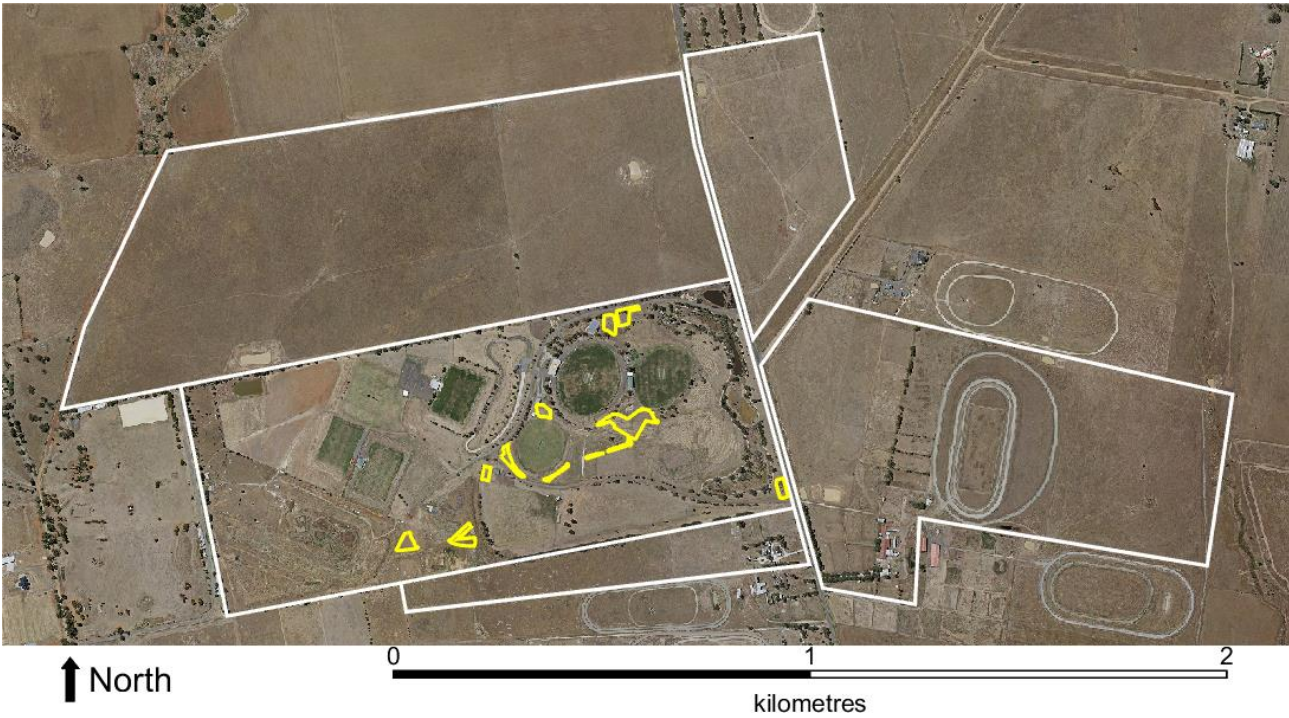


3. Aerial photograph showing mapped native vegetation





4. Map of the property in context



Yellow boundaries denote areas of proposed native vegetation removal.