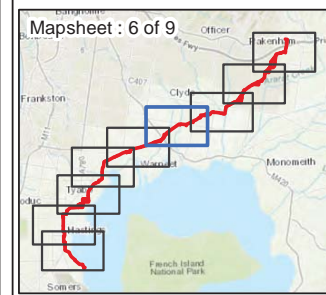
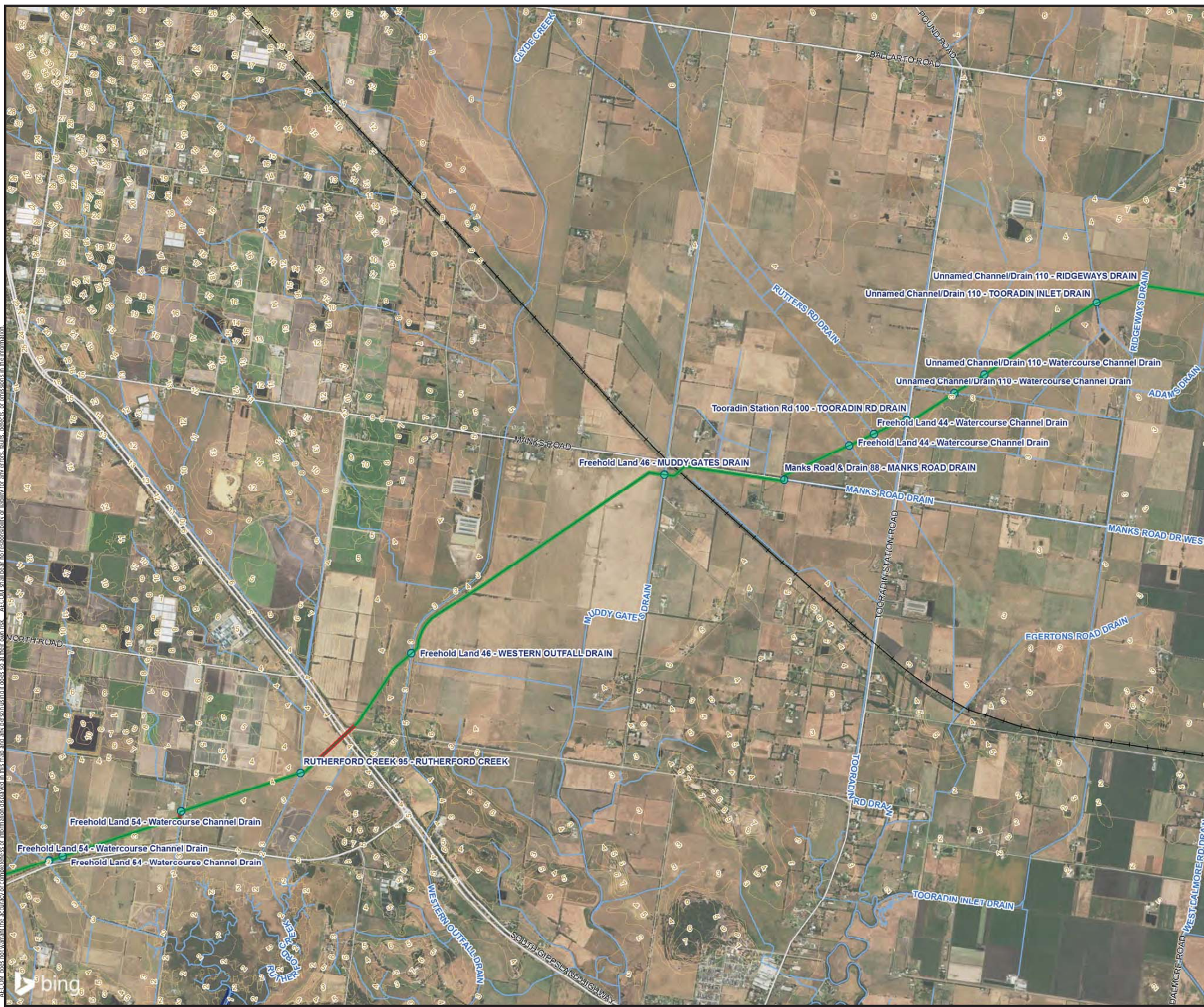
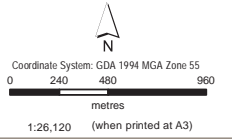


- LEGEND**
- Trench
 - Trenchless
 - Drain / Watercourse Intersection
 - Bairnsdale-Melbourne Railway
 - Watercourses
 - Contours (1m)
 - Ramsar wetlands
 - Western Port

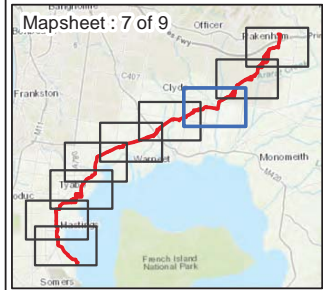


Surface Water Features

Map Document: (baumel1fp003.au.aecomnet.com/groups\WTRISpatial\Sys\Projects\2018\CPT_Geo\02_Maps\F2_Topo_Surface_Water.mxd)



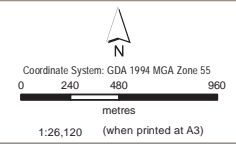
- LEGEND**
- Trench
 - Trenchless
 - Drain / Watercourse Intersection
 - + Bairnsdale-Melbourne Railway
 - Watercourses
 - Contours (1m)



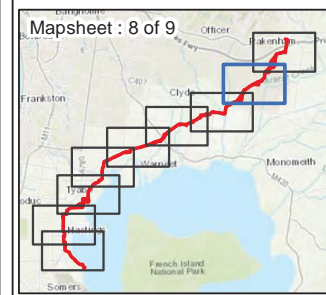
Surface Water Features

APA Group
 Hydrological and Hydrogeological
 Assessment – Crib Point to
 Pakenham Pipeline Project
 Westport, VIC

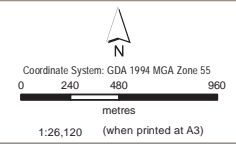
Figure
F2g



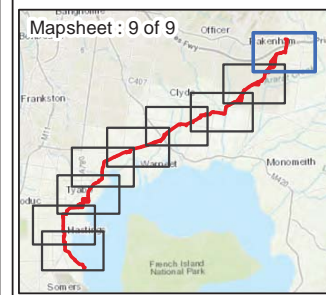
- LEGEND**
- Trench
 - Trenchless
 - Drain / Watercourse Intersection
 - + Bairnsdale-Melbourne Railway
 - Watercourses
 - Contours (1m)



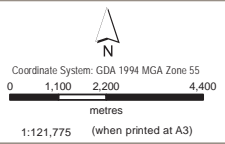
Surface Water Features



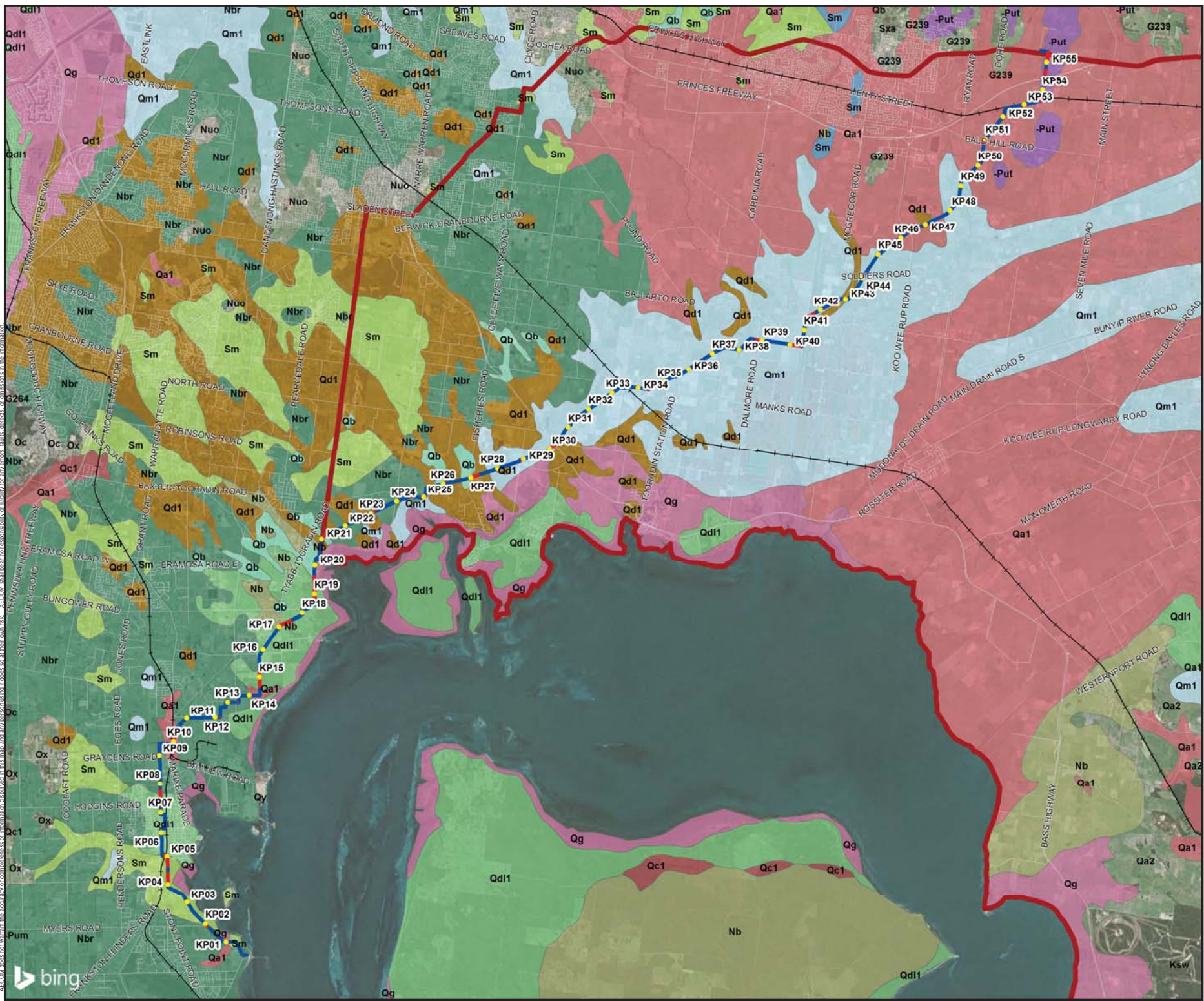
- LEGEND**
- Trench
 - Trenchless
 - Drain / Watercourse Intersection
 - + Bairnsdale-Melbourne Railway
 - Watercourses
 - Contours (1m)



Surface Water Features



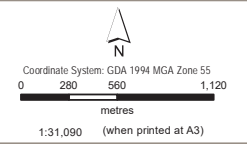
- LEGEND**
- Trench
 - Trenchless
 - Bairnsdale-Melbourne Railway
 - Watercourses
 - KooWeeRup Water Supply Protection
- Geological Unit**
- Brighton Group (Nb): generic
 - Murrindindi Supergroup (Sm): generic
 - Murrindindi Supergroup (Sm): hornfels
 - Red Bluff Sandstone (Nbr): generic
 - Thorpdale Volcanic Group (-Put): Generic
 - alluvium and colluvium (Qb): generic
 - alluvium (Qa1): generic
 - coastal dune deposits (Qd1): generic
 - coastal lagoon deposits (Qg): generic
 - colluvium (Qc1): generic
 - inland dune deposits (Qd1): generic
 - swamp and lake deposits (Qm1): generic



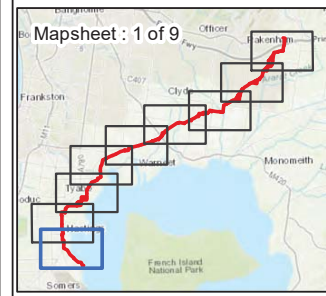
Geology

APA Group
 Hydrological and Hydrogeological
 Assessment – Crib Point to
 Pakenham Pipeline Project
 Westport, VIC

**Figure
 F3**



- LEGEND**
- Trench
 - Trenchless
 - +— Bairnsdale-Melbourne Railway
 - Watercourses
- Depth to Watertable**
- Less than 5m
 - 5 - 10m
 - 10 - 20m
 - > 20m

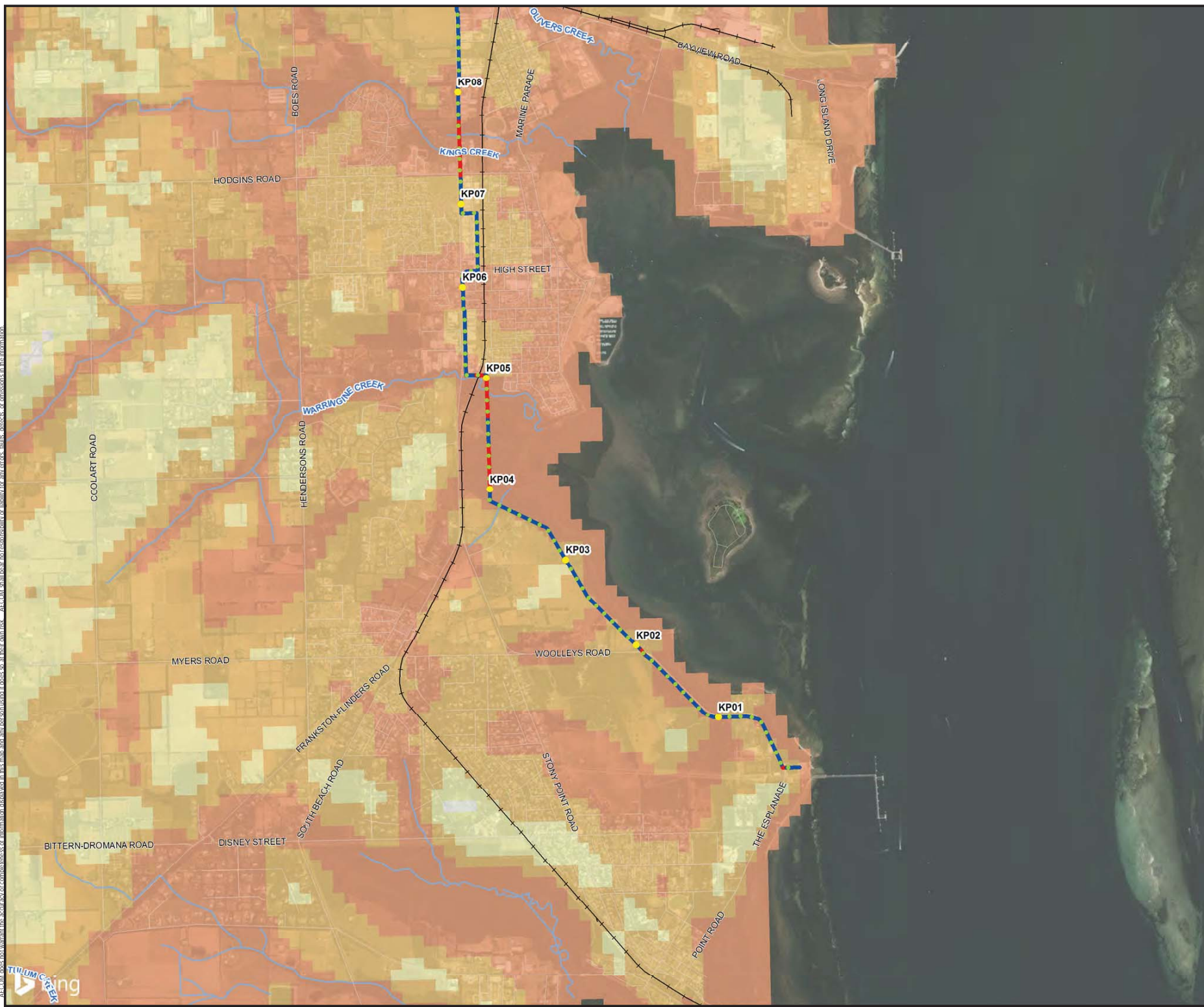


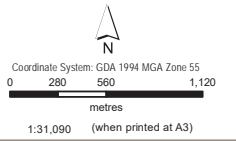
Depth to Groundwater

APA Group
 Hydrological and Hydrogeological
 Assessment – Crib Point to
 Pakenham Pipeline Project

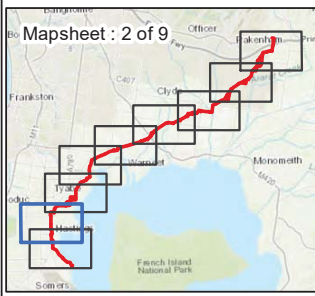
**Figure
 F4a**

Westerport, VIC





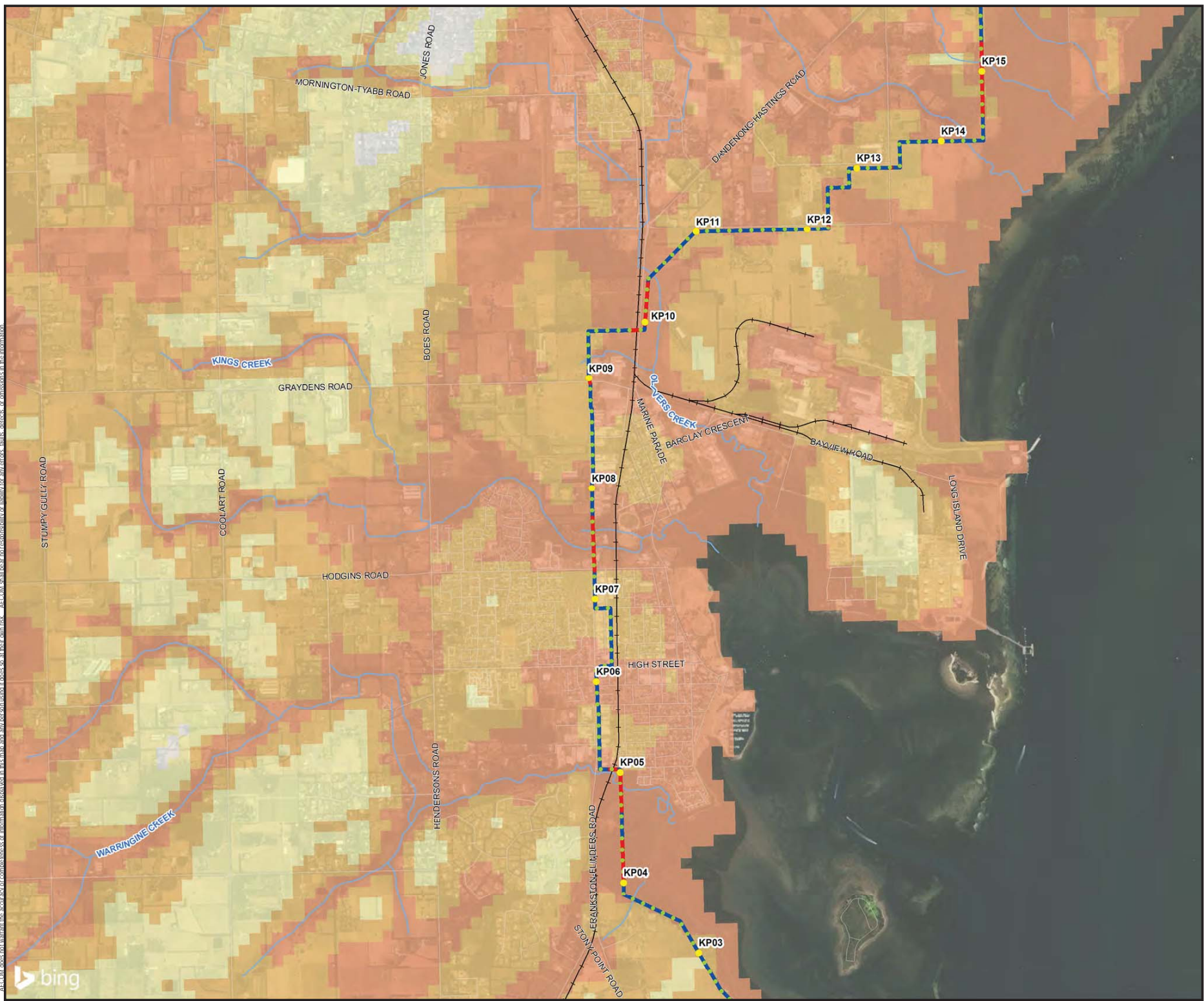
- LEGEND**
- Trench
 - Trenchless
 - +— Bairnsdale-Melbourne Railway
 - Watercourses
- Depth to Watertable**
- Less than 5m
 - 5 - 10m
 - 10 - 20m
 - > 20m

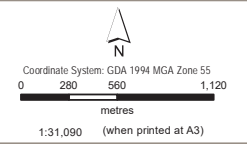


Depth to Groundwater

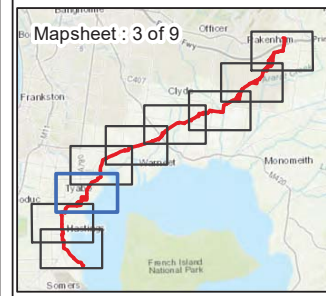
APA Group
 Hydrological and Hydrogeological Assessment – Crib Point to Pakenham Pipeline Project
 Westerport, VIC

Figure F4b





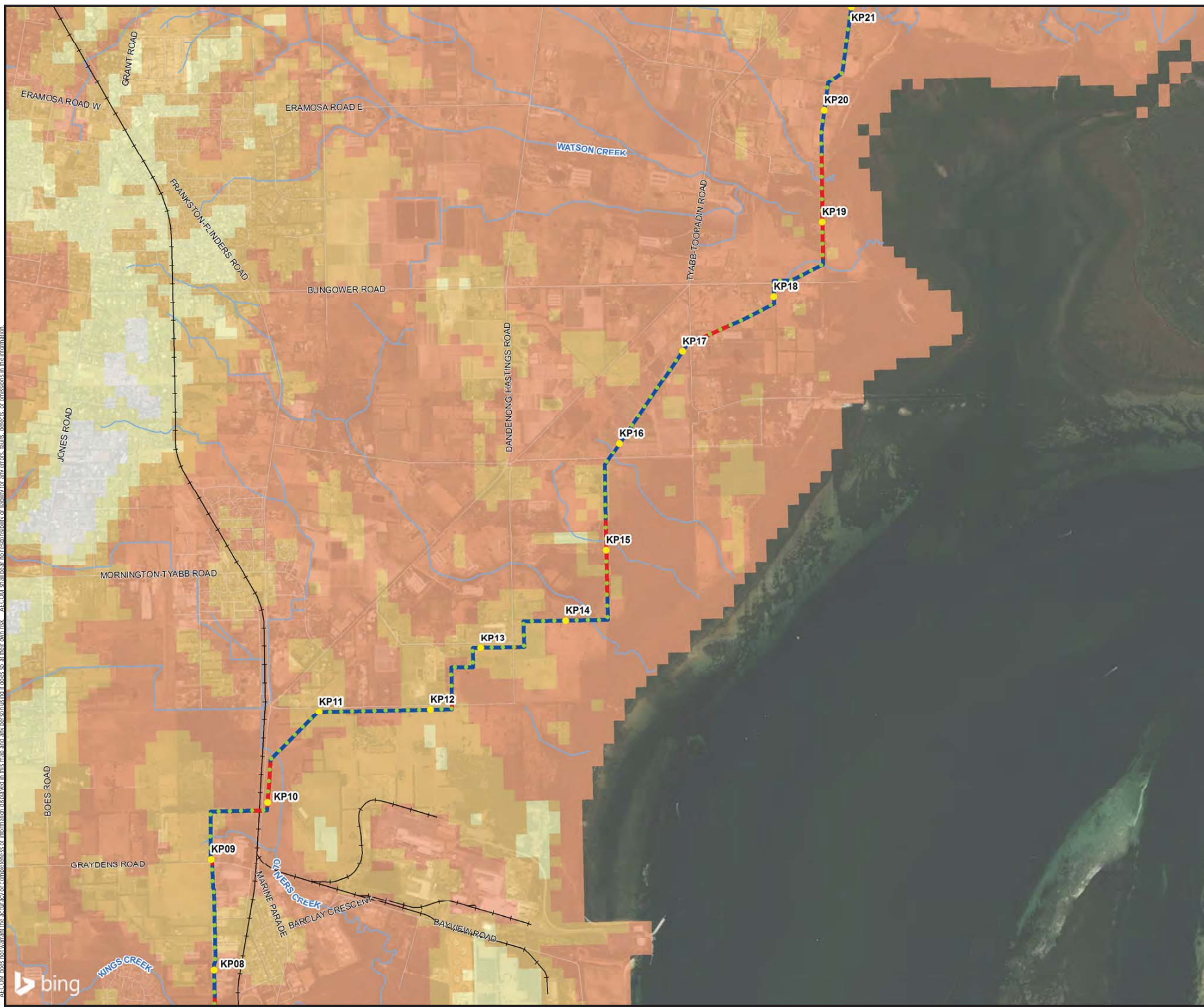
- LEGEND**
- Trench
 - Trenchless
 - + - Bairnsdale-Melbourne Railway
 - Watercourses
- Depth to Watertable**
- Less than 5m
 - 5 - 10m
 - 10 - 20m
 - > 20m



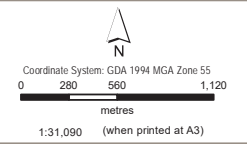
Depth to Groundwater

APA Group
 Hydrological and Hydrogeological
 Assessment – Crib Point to
 Pakenham Pipeline Project
 Westerport, VIC

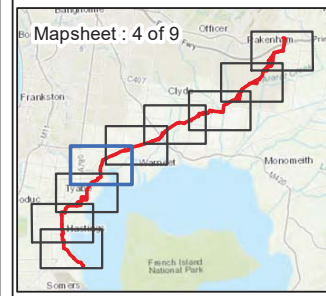
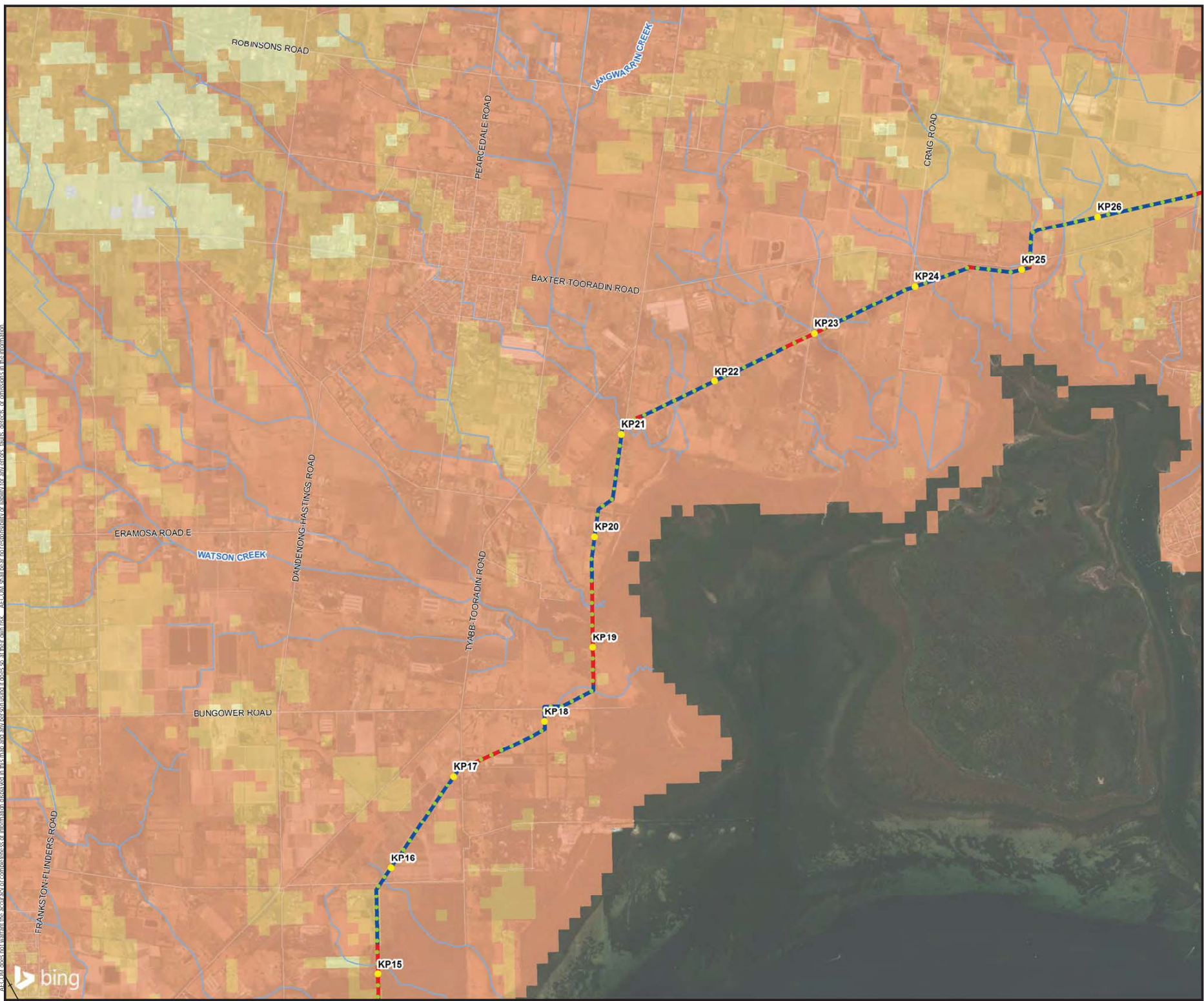
**Figure
 F4c**



AECOM does not warrant the accuracy or completeness of information displayed in this map and does not accept any liability for any errors, omissions, or inaccuracies in the information.



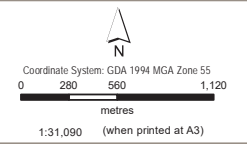
- LEGEND**
- Trench
 - Trenchless
 - + Bairnsdale-Melbourne Railway
 - Watercourses
- Depth to Watertable**
- Less than 5m
 - 5 - 10m
 - 10 - 20m
 - > 20m



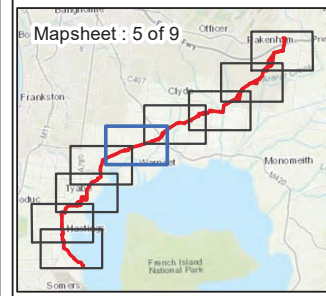
Depth to Groundwater

APA Group
 Hydrological and Hydrogeological
 Assessment – Crib Point to
 Pakenham Pipeline Project
 Westerport, VIC

**Figure
 F4d**



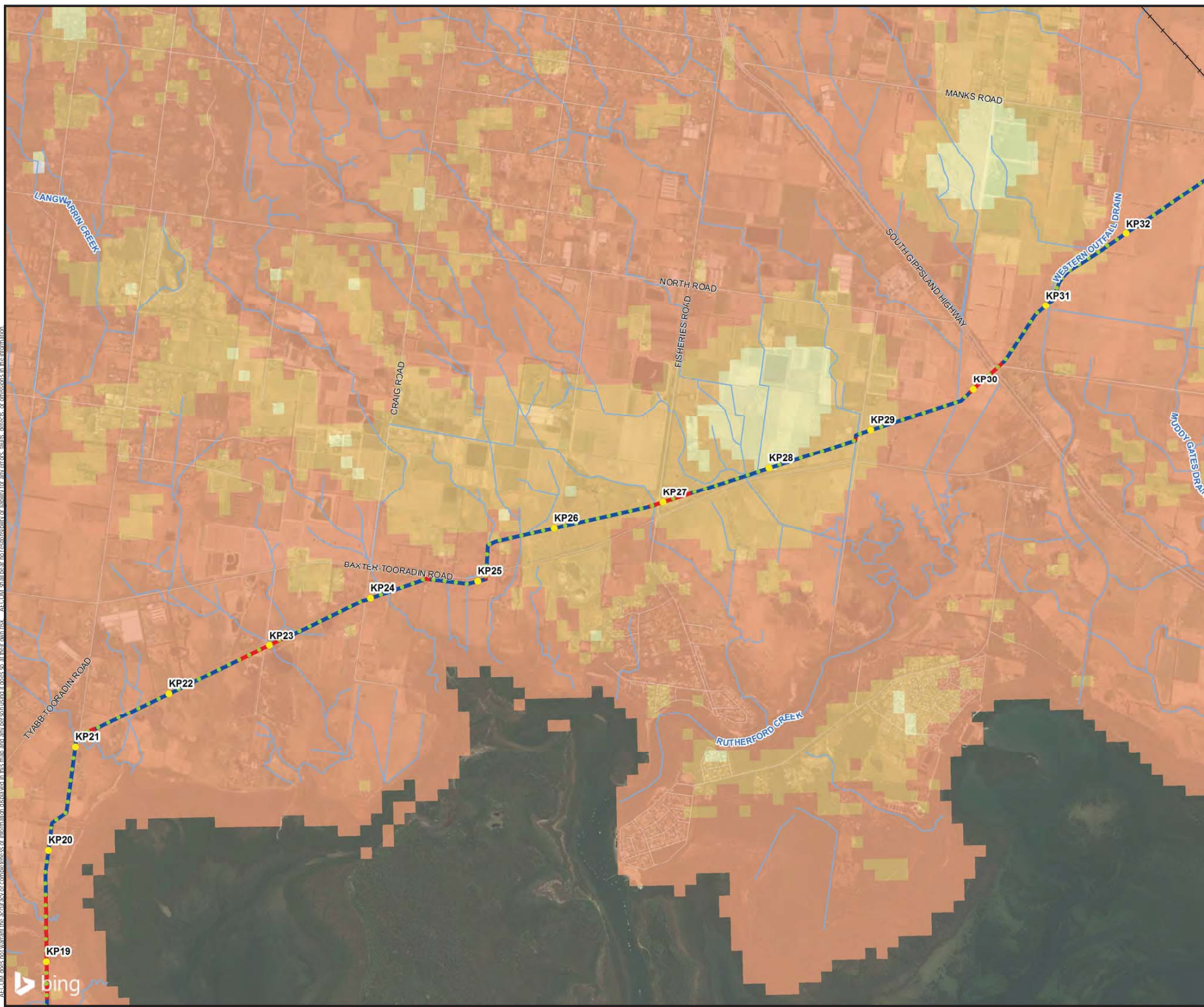
- LEGEND**
- Trench
 - Trenchless
 - + Bairnsdale-Melbourne Railway
 - Watercourses
- Depth to Watertable**
- Less than 5m
 - 5 - 10m
 - 10 - 20m
 - > 20m

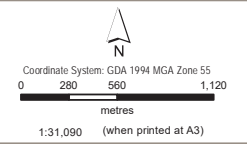


Depth to Groundwater

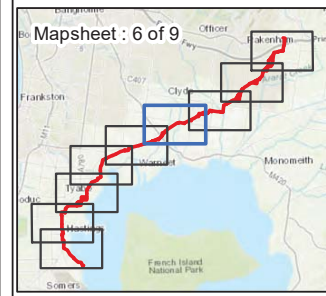
APA Group
 Hydrological and Hydrogeological
 Assessment – Crib Point to
 Pakenham Pipeline Project
 Westerport, VIC

**Figure
 F4e**





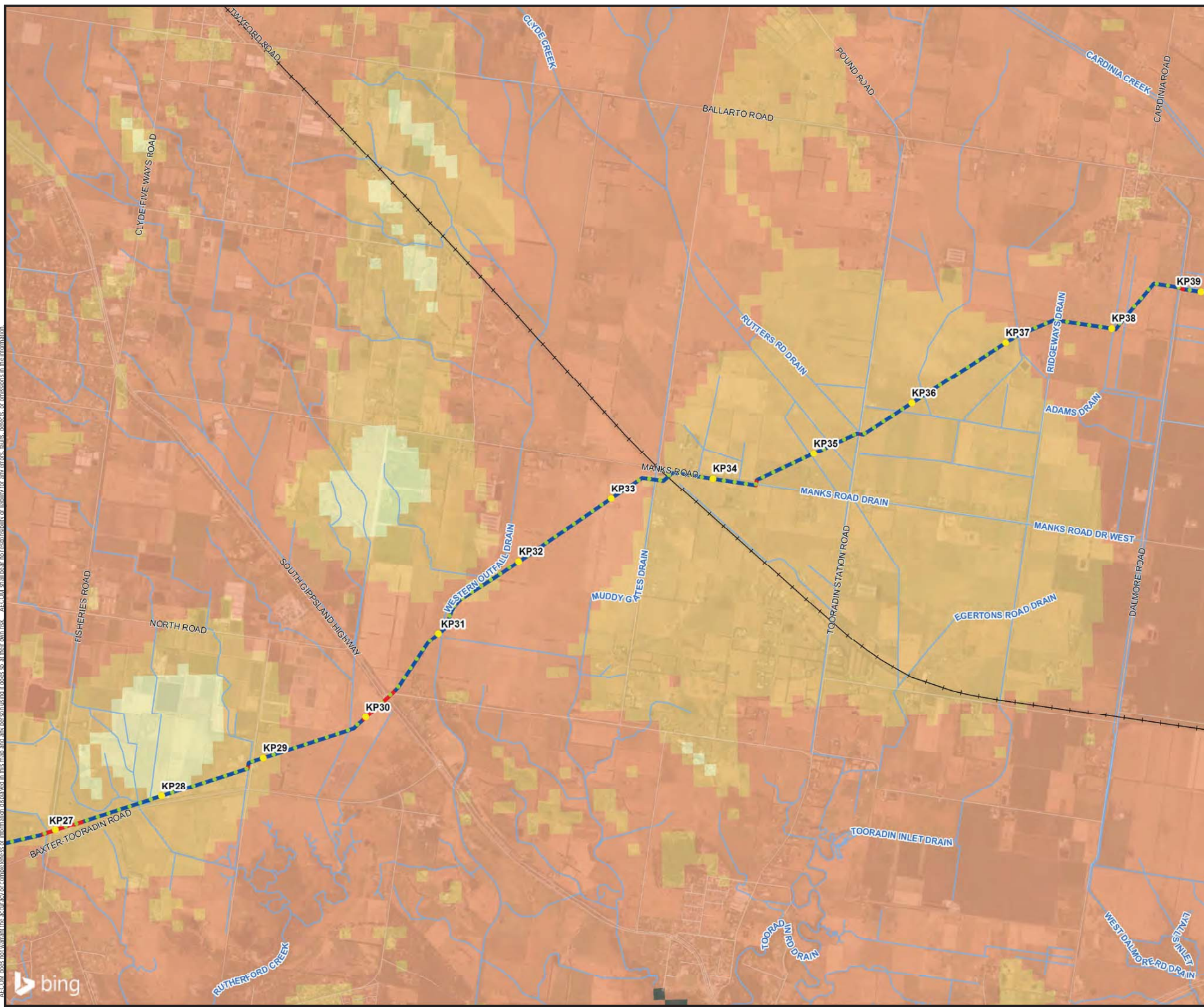
- LEGEND**
- Trench
 - Trenchless
 - Bairnsdale-Melbourne Railway
 - Watercourses
- Depth to Watertable**
- Less than 5m
 - 5 - 10m
 - 10 - 20m



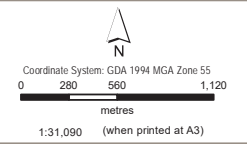
Depth to Groundwater

APA Group
 Hydrological and Hydrogeological Assessment – Crib Point to Pakenham Pipeline Project
 Westerport, VIC

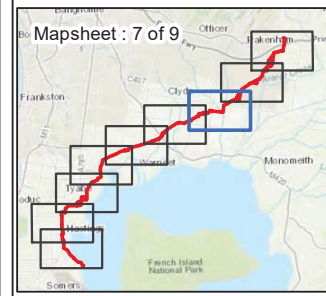
Figure F4f



AECOM does not warrant the accuracy or completeness of information displayed in this map and does not assume any liability for any errors, omissions, faults, defects, or omissions in the information.



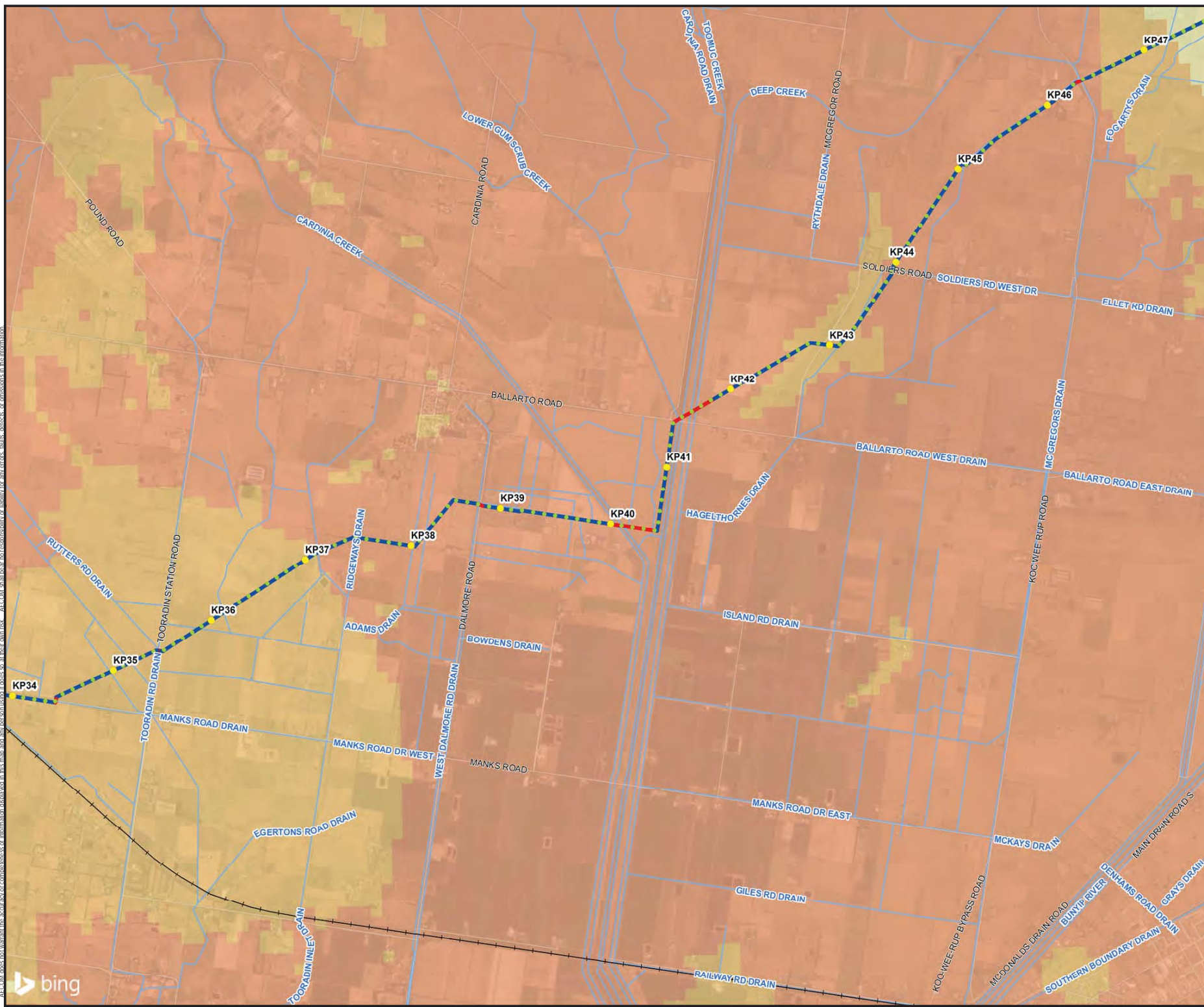
- LEGEND**
- Trench
 - Trenchless
 - + Bairnsdale-Melbourne Railway
 - Watercourses
- Depth to Watertable**
- Less than 5m
 - 5 - 10m
 - 10 - 20m

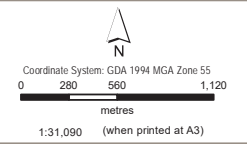


Depth to Groundwater

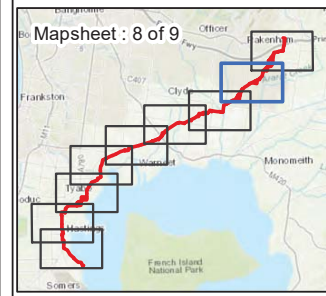
APA Group
 Hydrological and Hydrogeological Assessment – Crib Point to Pakenham Pipeline Project
 Westerton, VIC

Figure F4g





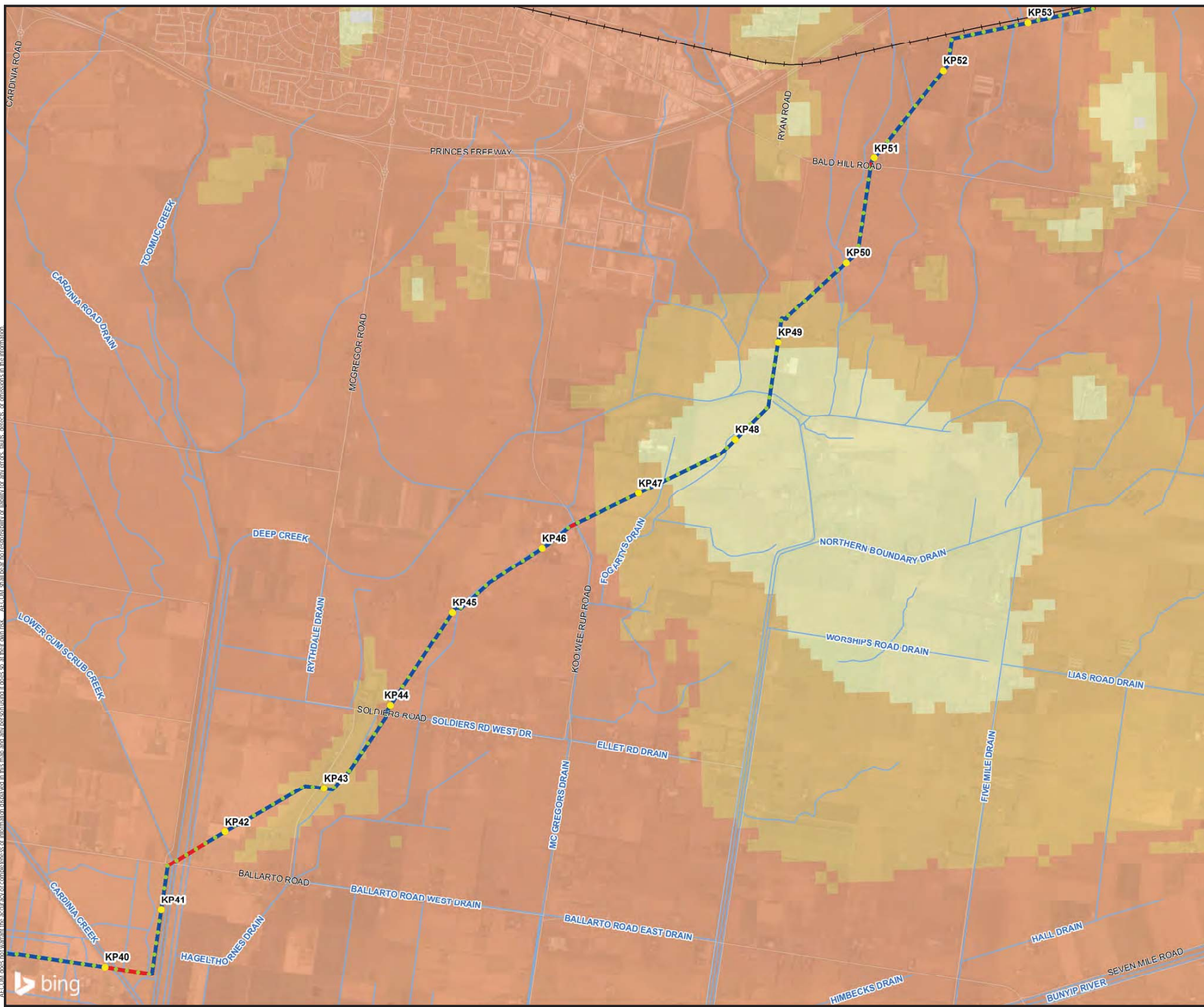
- LEGEND**
- Trench
 - Trenchless
 - + Bairnsdale-Melbourne Railway
 - Watercourses
- Depth to Watertable**
- Less than 5m
 - 5 - 10m
 - 10 - 20m
 - > 20m



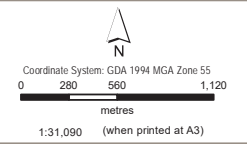
Depth to Groundwater

APA Group
 Hydrological and Hydrogeological
 Assessment – Crib Point to
 Pakenham Pipeline Project
 Westport, VIC

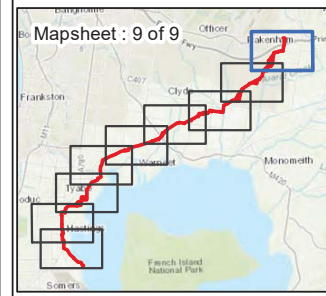
**Figure
 F4h**



AECOM does not warrant the accuracy or completeness of information displayed in this map and assumes no liability for any errors, omissions, or omissions in the information.



- LEGEND**
- Trench
 - Trenchless
 - + - - - Bairnsdale-Melbourne Railway
 - Watercourses
- Depth to Watertable**
- Less than 5m
 - 5 - 10m
 - 10 - 20m
 - > 20m



Depth to Groundwater

APA Group
 Hydrological and Hydrogeological
 Assessment – Crib Point to
 Pakenham Pipeline Project
 Westerport, VIC

**Figure
 F4i**

