

Path: L:\Consult\GIS\GIS_WRM\Monarc\CribPtToPakenham\ListedFloraFauna_RevB.mxd

APA Transmission Pty Limited - 31-02984.00

Crib Point Pakenham Pipeline Project

Listed Flora and Fauna

Page 1 of 24

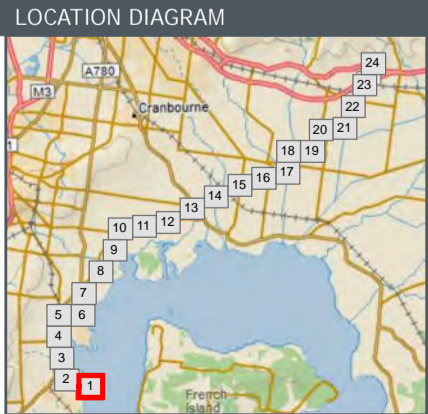
WORK REQUEST NUMBER: 31-02984.00

DATA SOURCES:
 Service Layer Credits: Copyright © 2018 Garmin
 Source: Esri, DigitalGlobe, GeoEye, Earthstar Geographics, CNES/Airbus DS, USDA, USGS, AeroGRID, IGN, and the GIS User Community

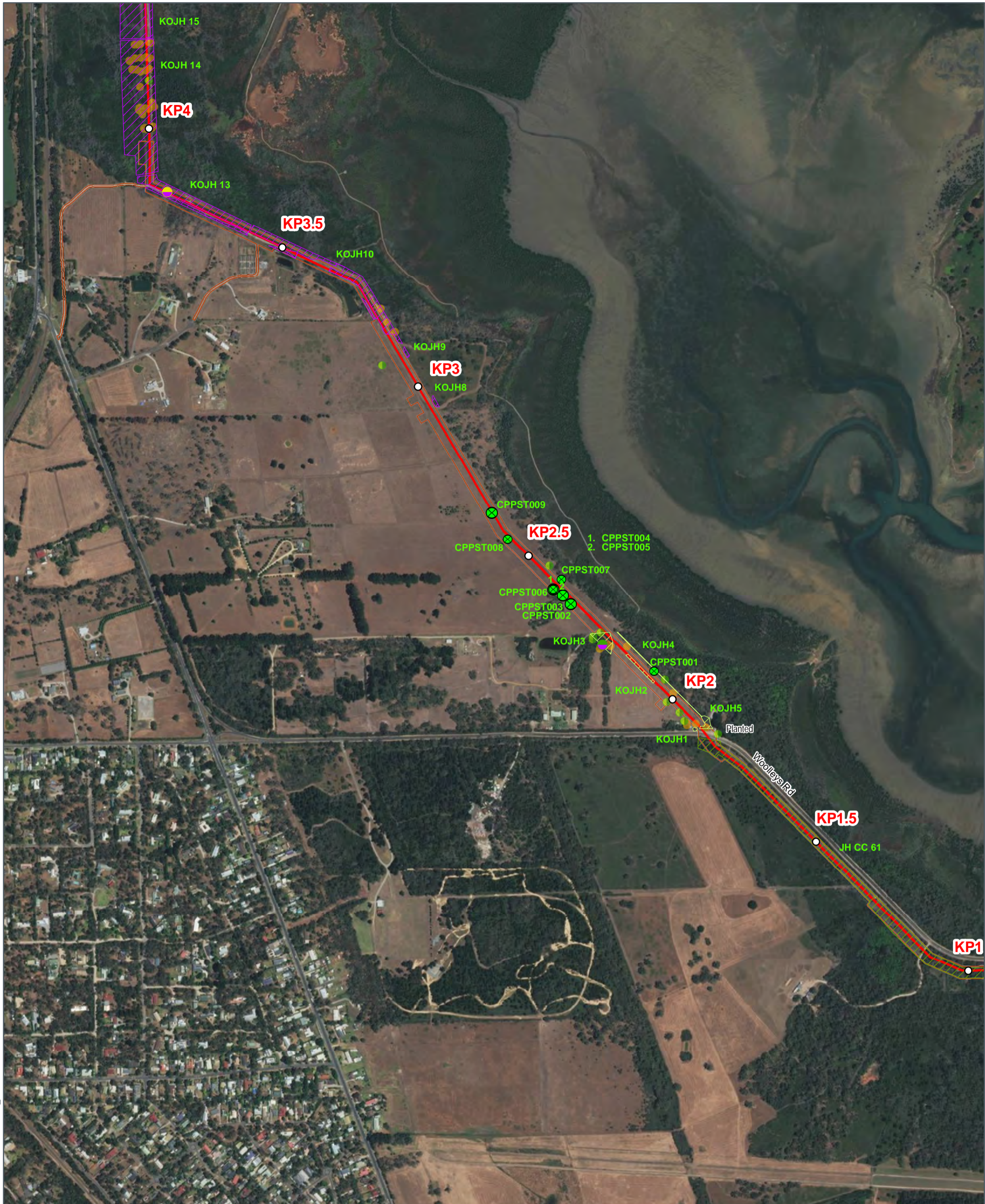
Kilometre Points		Listed Fauna		Water Course		Vegetation Patch	
	Kilometre Points		Listed Avian Fauna		Water Course		Endangered
	Large Scattered Trees		FFG Listed Aquatic Fauna		Crib Point Pakenham Alignment		Vulnerable
	Small Scattered Trees		Glossy Grass Skink		Construction Footprint		Least Concern
	Other Scattered Trees		Growing Grass Frog		Water Body		Planted
	Flora Survey Site		Southern Brown Bandicoot				EPBC Listed Subtropical and Temperate Coastal Saltmarsh
	Fauna Survey Site		Southern Toadlet				

ISSUE DATE	AUTHOR	QA CHECK	APPROVED	MAP REV.	REVISION NOTE
04/09/2018	AB	JH	MV	B	Issued for Review
14/08/2018	AB	JH	CC	A	Issued for Review

Scale: 0 100 200 Metres
 1:8,500
 (A3) GDA 1994 MGA Zone 55



Monarc does not guarantee the accuracy or completeness of the map and does not make any warranty about the data.
 Monarc is not under any liability to the user for any loss or damage (including consequential loss or damage) which the user may suffer resulting from the use of this map.



Path: L:\Consult\GIS\GIS_WRM\Monarc\CribPtToPakenham\ListedFloraFauna_RevB.mxd

APA Transmission Pty Limited - 31-02984.00

Crib Point Pakenham Pipeline Project Listed Flora and Fauna Page 2 of 24

WORK REQUEST NUMBER: 31-02984.00

DATA SOURCES:
Service Layer Credits: Copyright © 2018 Garmin
Source: Esri, DigitalGlobe, GeoEye, Earthstar Geographics, CNES/Airbus DS, USDA, USGS, AeroGRID, IGN, and the GIS User Community

LEGEND	
	Kilometre Points
	Large Scattered Trees
	Small Scattered Trees
	Other Scattered Trees
	Flora Survey Site
	Fauna Survey Site
	Listed Fauna
	Listed Avian Fauna
	FFG Listed Aquatic Fauna
	Glossy Grass Skink
	Growing Grass Frog
	Southern Brown Bandicoot
	Southern Toadlet
	Water Course
	Crib Point Pakenham Alignment
	Construction Footprint
	Water Body
	Endangered
	Vulnerable
	Least Concern
	Planted
	EPBC Listed Subtropical and Temperate Coastal Saltmarsh

(A3) GDA 1994 MGA Zone 55

0 100 200
Metres
1:8,500

LOCATION DIAGRAM

Monarc does not guarantee the accuracy or completeness of the map and does not make any warranty about the data. Monarc is not under any liability to the user for any loss or damage (including consequential loss or damage) which the user may suffer resulting from the use of this map.



Path: L:\Consult\GIS\GIS_WRM\Monarc\CribPt\ToPakenham\ListedFloraFauna_RevB.mxd

APA Transmission Pty Limited - 31-02984.00

Crib Point Pakenham Pipeline Project Listed Flora and Fauna Page 3 of 24

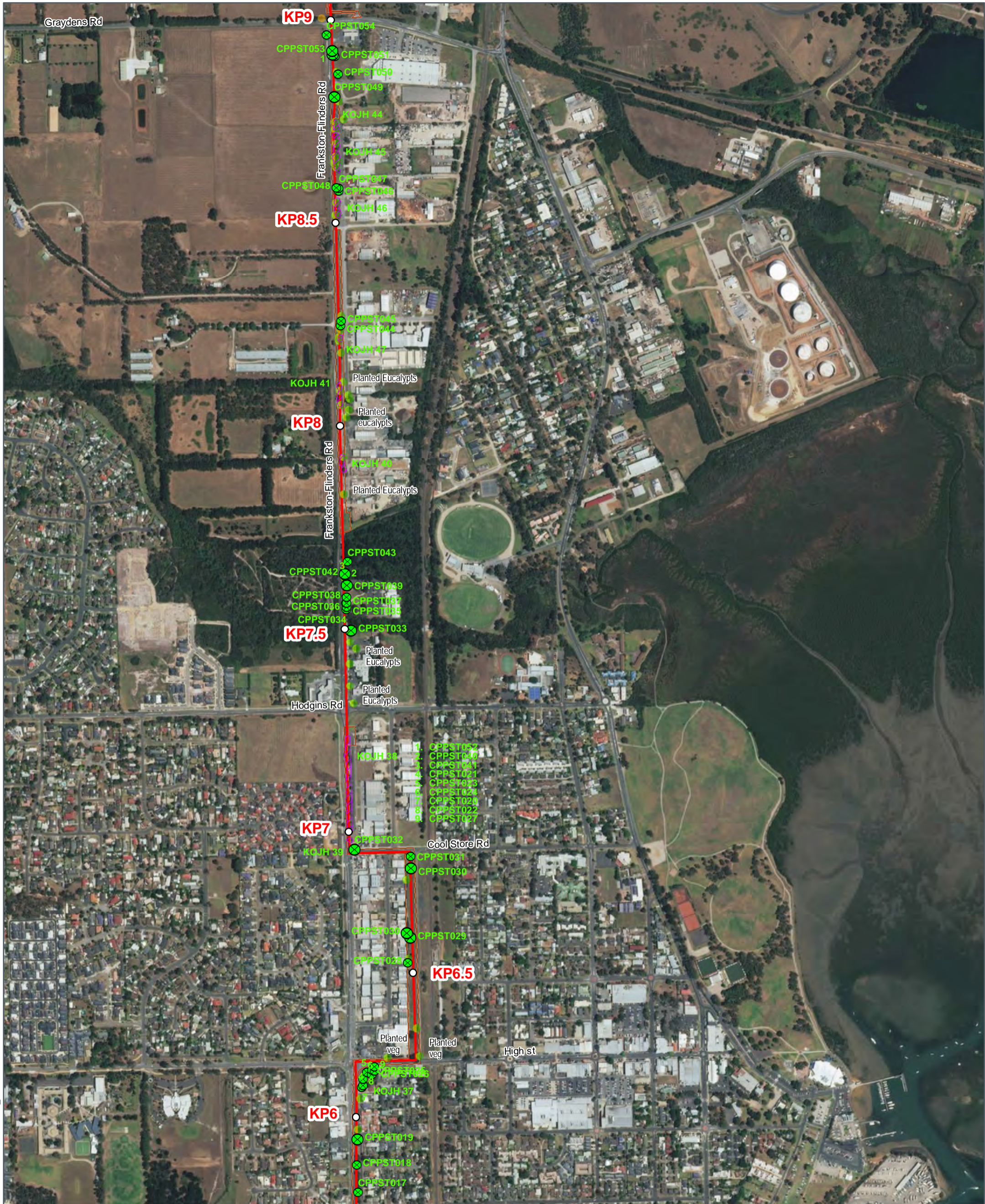
WORK REQUEST NUMBER: 31-02984.00
 DATA SOURCES:
 Service Layer Credits: Copyright © 2018 Garmin
 Source: Esri, DigitalGlobe, GeoEye, Earthstar Geographics,
 CNES/Airbus DS, USDA, USGS, AeroGRID, IGN, and the GIS User
 Community

Kilometre Points		Listed Fauna		Water Course		Vegetation Patch	
○	Kilometre Points	●	Listed Fauna	—	Water Course	▨	Endangered
●	Large Scattered Trees	●	Listed Avian Fauna	—	Crib Point Pakenham Alignment	▨	Vulnerable
●	Small Scattered Trees	●	FFG Listed Aquatic Fauna	▭	Construction Footprint	▨	Least Concern
●	Other Scattered Trees	●	Glossy Grass Skink	▭	Water Body	▨	Planted
●	Flora Survey Site	●	Growing Grass Frog			▨	EPBC Listed Subtropical and Temperate Coastal Saltmarsh
●	Fauna Survey Site	●	Southern Brown Bandicoot				
		●	Southern Toadlet				

ISSUE DATE	AUTHOR	QA CHECK	APPROVED	MAP REV.	REVISION NOTE
04/09/2018	AB	JH	MV	B	Issued for Review
14/08/2018	AB	JH	CC	A	Issued for Review



Monarc does not guarantee the accuracy or completeness of the map and does not make any warranty about the data. Monarc is not under any liability to the user for any loss or damage (including consequential loss or damage) which the user may suffer resulting from the use of this map.



APA Transmission Pty Limited - 31-02984.00

Crib Point Pakenham Pipeline Project Listed Flora and Fauna Page 4 of 24

WORK REQUEST NUMBER: 31-02984.00

DATA SOURCES:
Service Layer Credits: Copyright © 2018 Garmin
Source: Esri, DigitalGlobe, GeoEye, Earthstar Geographics, CNES/Airbus DS, USDA, USGS, AeroGRID, IGN, and the GIS User Community

ISSUE DATE	AUTHOR	QA CHECK	APPROVED	MAP REV.	REVISION NOTE
04/09/2018	AB	JH	MV	B	Issued for Review
14/08/2018	AB	JH	CC	A	Issued for Review

LEGEND

- Kilometre Points
- Large Scattered Trees
- Small Scattered Trees
- Other Scattered Trees
- Flora Survey Site
- Fauna Survey Site
- Listed Fauna
- Listed Avian Fauna
- FFG Listed Aquatic Fauna
- Glossy Grass Skink
- Growing Grass Frog
- Southern Brown Bandicoot
- Southern Toadlet
- Water Course
- Crib Point Pakenham Alignment
- Construction Footprint
- Water Body
- Endangered
- Vulnerable
- Least Concern
- Planted
- EPBC Listed Subtropical and Temperate Coastal Saltmarsh

LOCATION DIAGRAM

0 100 200
Metres
1:8,500
(A3) GDA 1994 MGA Zone 55

Path: L:\Consult\GIS\GIS_WRM\Monarc\CribPt\toPakenham\ListedFloraFauna_RevB.mxd

Monarc does not guarantee the accuracy or completeness of the map and does not make any warranty about the data. Monarc is not under any liability to the user for any loss or damage (including consequential loss or damage) which the user may suffer resulting from the use of this map.



Path: L:\Consult\GIS\GIS_WRM\Monarc\CribPt\ToPakenham\ListedFloraFauna_RevB.mxd

APA Transmission Pty Limited - 31-02984.00

Crib Point Pakenham Pipeline Project Listed Flora and Fauna Page 5 of 24

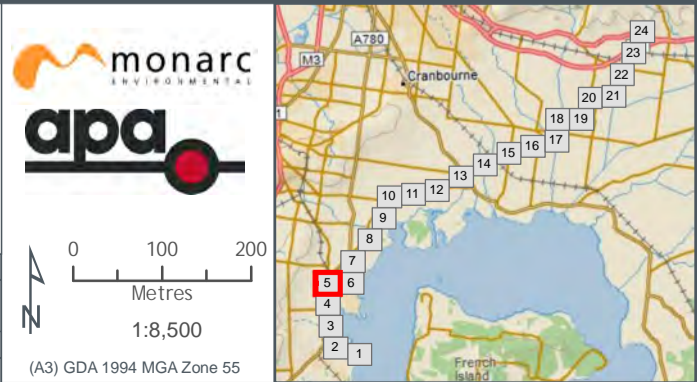
WORK REQUEST NUMBER: 31-02984.00
 DATA SOURCES:
 Service Layer Credits: Copyright © 2018 Garmin
 Source: Esri, DigitalGlobe, GeoEye, Earthstar Geographics,
 CNES/Airbus DS, USDA, USGS, AeroGRID, IGN, and the GIS User
 Community

ISSUE DATE	AUTHOR	QA CHECK	APPROVED	MAP REV.	REVISION NOTE
04/09/2018	AB	JH	MV	B	Issued for Review
14/08/2018	AB	JH	CC	A	Issued for Review

LEGEND

- Kilometre Points
- Large Scattered Trees
- Small Scattered Trees
- Other Scattered Trees
- Flora Survey Site
- Fauna Survey Site
- Listed Fauna
- Listed Avian Fauna
- FFG Listed Aquatic Fauna
- Glossy Grass Skink
- Growing Grass Frog
- Southern Brown Bandicoot
- Southern Toadlet
- Water Course
- Crib Point Pakenham Alignment
- Construction Footprint
- Water Body
- Endangered
- Vulnerable
- Least Concern
- Planted
- EPBC Listed Subtropical and Temperate Coastal Saltmarsh

LOCATION DIAGRAM



Monarc does not guarantee the accuracy or completeness of the map and does not make any warranty about the data.
 Monarc is not under any liability to the user for any loss or damage (including consequential loss or damage) which the user may suffer resulting from the use of this map.



APA Transmission Pty Limited - 31-02984.00

Crib Point Pakenham Pipeline Project Listed Flora and Fauna Page 6 of 24

WORK REQUEST NUMBER: 31-02984.00

DATA SOURCES:
Service Layer Credits: Copyright:© 2018 Garmin
Source: Esri, DigitalGlobe, GeoEye, Earthstar Geographics, CNES/Airbus DS, USDA, USGS, AeroGRID, IGN, and the GIS User Community

ISSUE DATE	AUTHOR	QA CHECK	APPROVED	MAP REV.	REVISION NOTE
04/09/2018	AB	JH	MV	B	Issued for Review
14/08/2018	AB	JH	CC	A	Issued for Review

LEGEND

- Kilometre Points
- Large Scattered Trees
- Small Scattered Trees
- Other Scattered Trees
- Flora Survey Site
- Fauna Survey Site
- Listed Fauna
- FFG Listed Aquatic Fauna
- Glossy Grass Skink
- Growing Grass Frog
- Southern Brown Bandicoot
- Southern Toadlet
- Water Course
- Crib Point Pakenham Alignment
- Construction Footprint
- Water Body
- Endangered
- Vulnerable
- Least Concern
- Planted
- EPBC Listed Subtropical and Temperate Coastal Saltmarsh

0 100 200
Metres
1:8,500

(A3) GDA 1994 MGA Zone 55

LOCATION DIAGRAM

Path: L:\Consult\GIS\GIS_WRM\Monarc\CribPt\toPakenham\ListedFloraFauna_RevB.mxd

Monarc does not guarantee the accuracy or completeness of the map and does not make any warranty about the data. Monarc is not under any liability to the user for any loss or damage (including consequential loss or damage) which the user may suffer resulting from the use of this map.