

Attachment 2B - Over Dimensional (OD) Route Description

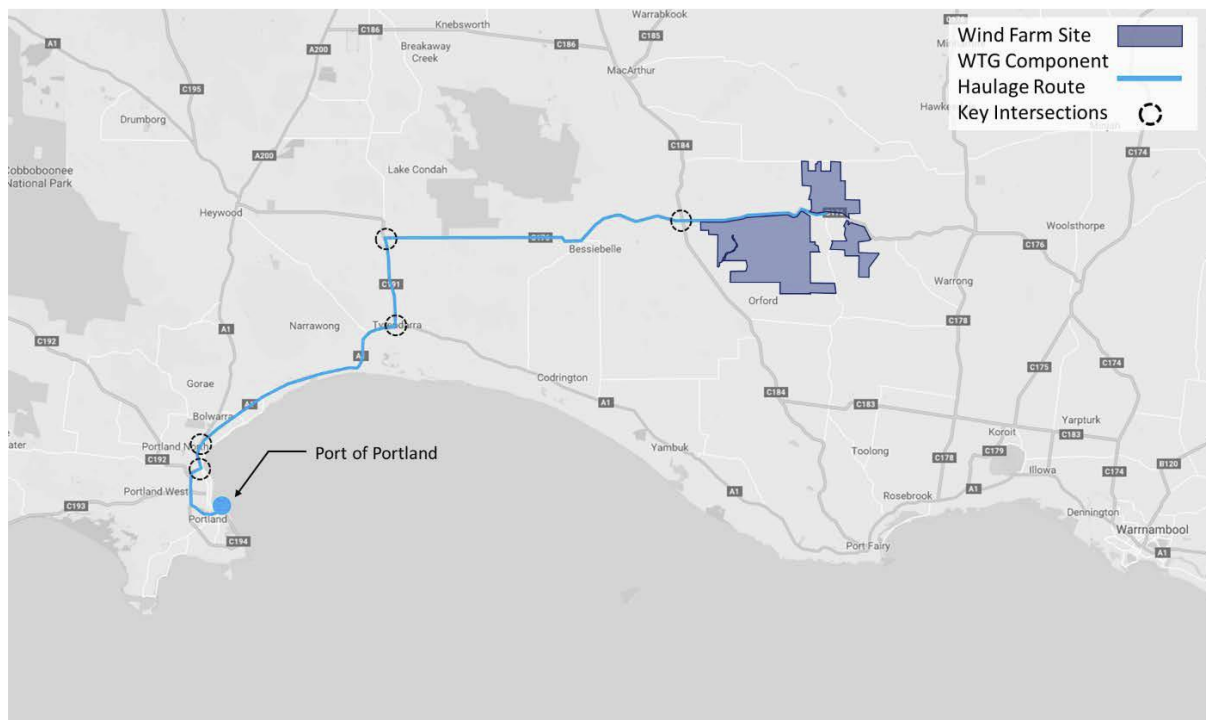
The Port of Portland is currently the preferred port of entry for WTG and other major imported componentry. On this basis, an over-dimensional (OD) vehicle haulage route has been identified between the Port of Portland and the Wind Farm site.

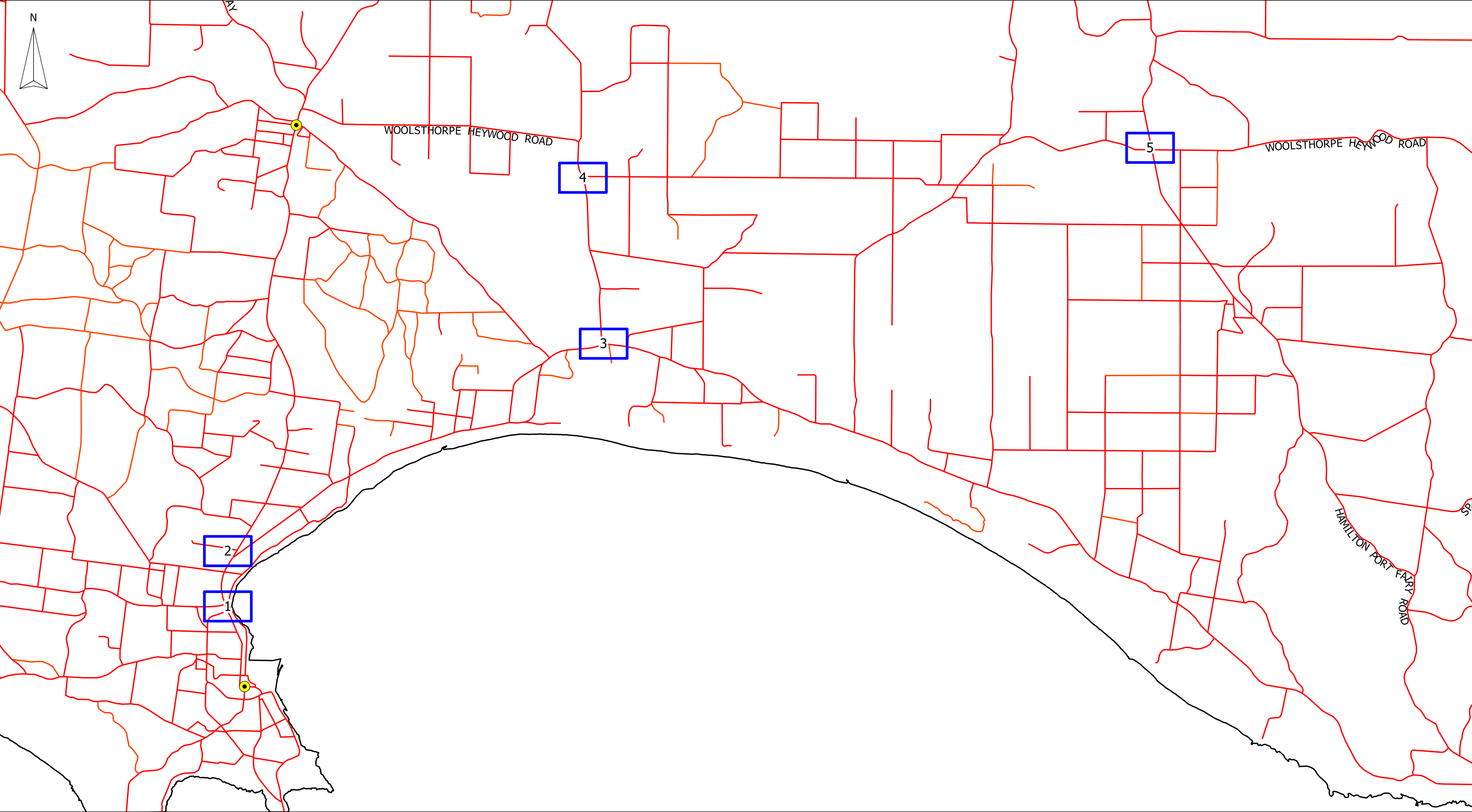
From the Port of Portland this route (see Figure 1 below), extends along approved or conditionally approved Over Size and Over Mass declared main roads via Henty Highway to Princes Highway, and then Tyrendarra-Ettrick Road to Woolsthorpe-Heywood Road, approaching the Wind Farm site from the west.

The following intersections and general swept path areas were considered for the EPBC Referral:




- Henty Highway / New Street, Portland;
- Princes Highway / Henty Highway, Portland;
- Princes Highway / Tyrendarra-Ettrick Road, Tyrendarra;
- Tyrendarra-Ettrick Road / Woolsthorpe-Heywood Road, Homerton;
- Woolsthorpe-Heywood Road / Hamilton – Port Fairy Road, Broadwater.

Figure 1. OD Vehicle haulage Route





LEGEND

-  Swept Area Location
-  Populated Place
-  Road

COMPANY

WILLATOOK WIND FARM PTY LTD

TITLE

SWEPT AREA LOCATION MAP

DATE

14 MAY 2018

DRAWN BY

S.HORNER

JOB NO.

090301

CHECKED BY

R. BARKER

DWG NO.

319

SHEET

1 OF 1

REVISION

A

SIZE

A3

VERSION

1

PROJECTION


Australia MGA94 (54'

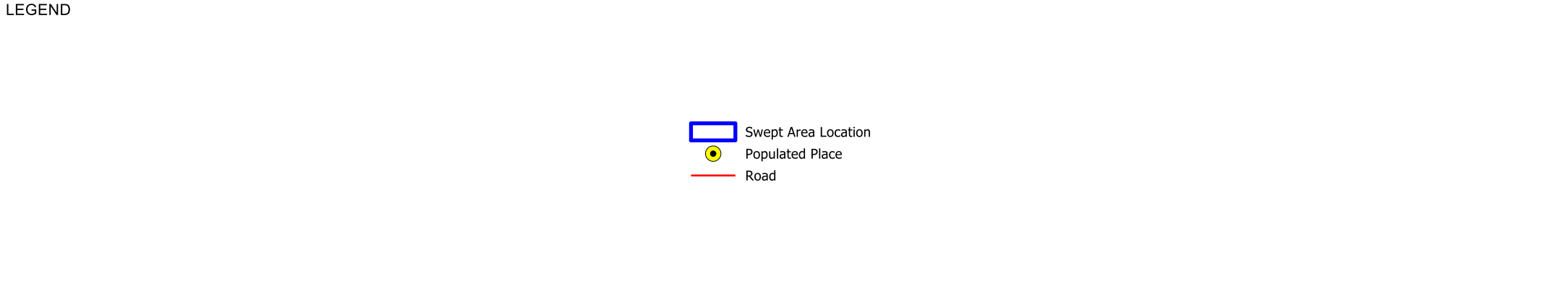
0

SCALE

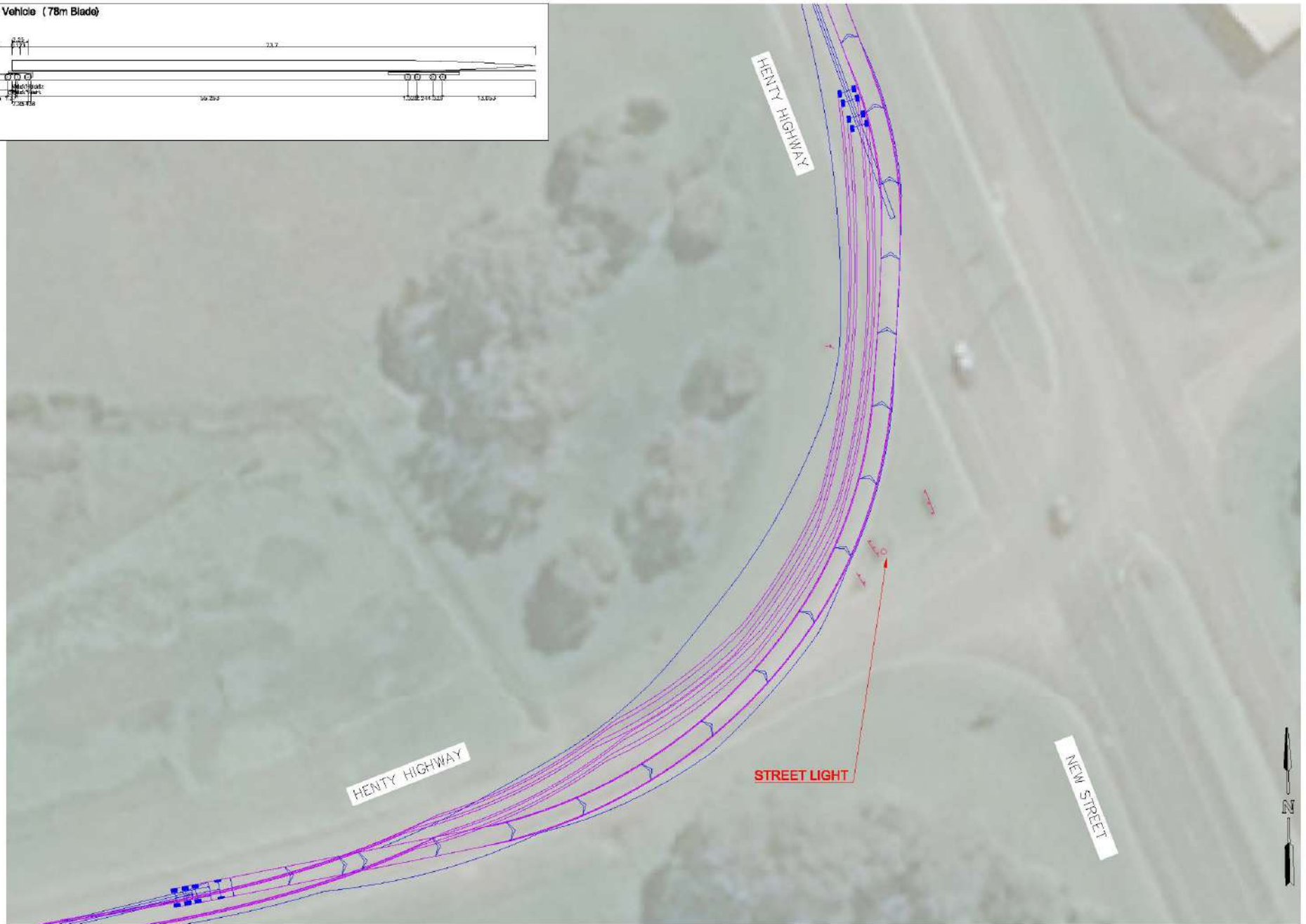
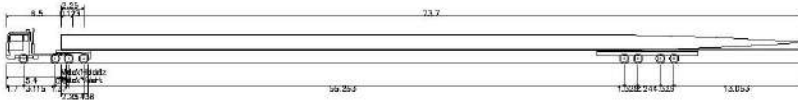
63.99 km

9 km





WTG Blade Transport Design Vehicle (78m Blade)



A	—	00/00/17	PRELIMINARY ISSUE
ISSUE	APP'D	DATE	AMENDMENT

DESIGNED	D. MOFFATT
CHECKED	A. WALLEY
AUTHORISED	A. WALLEY
SCALE	0 5 10

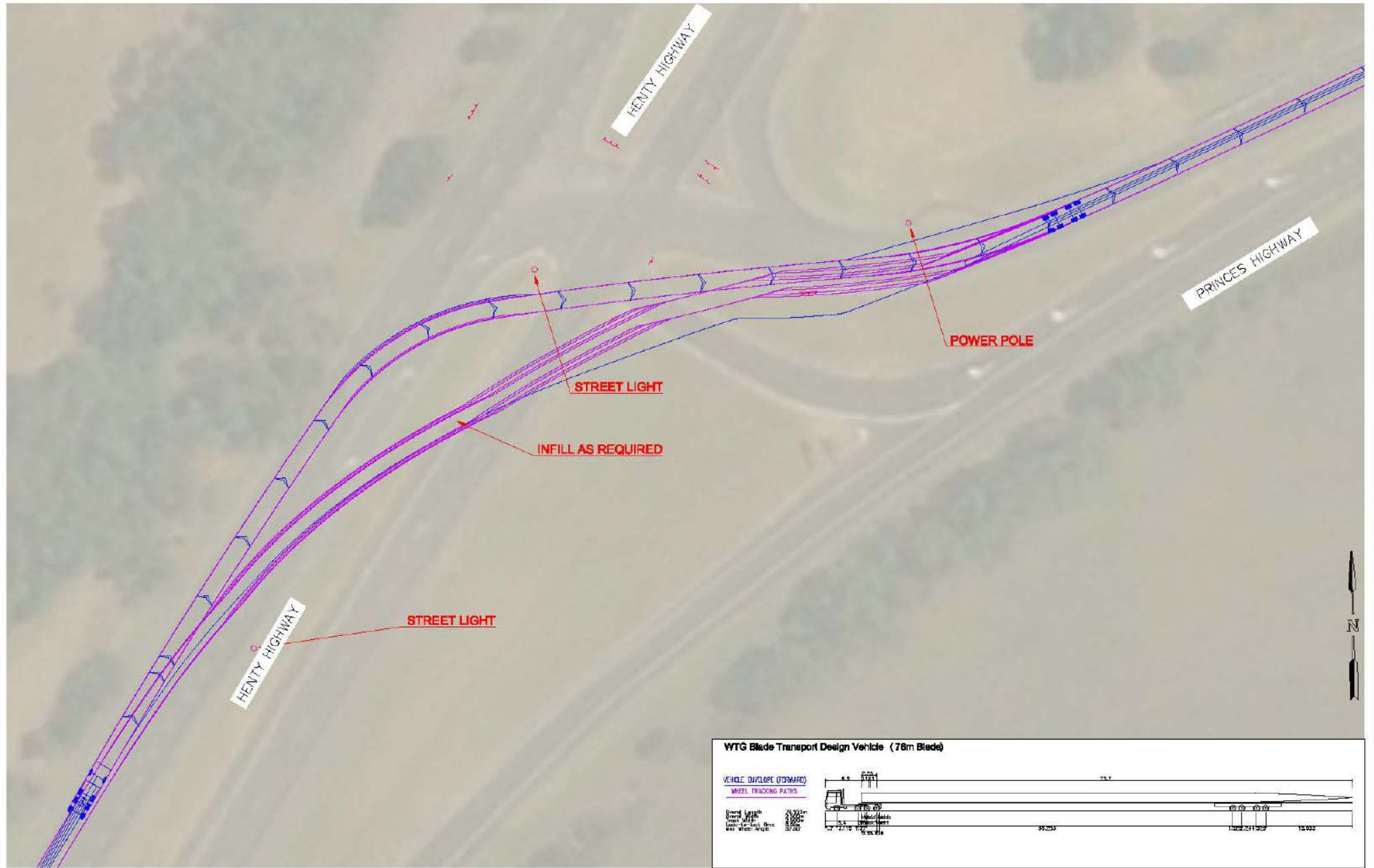
WILLATOOK WIND FARM
SWEPT PATH ASSESSMENT
HENTY HWY / NEW ST

DATE	SHEET NO.	DRAWING NO.	ISSUE
07/12/2017	1 OF 5	14558T SPO1-1	A

QAD FILE=V014501-15000145501 - willatook wind farm\design\cadd\2017.1.16\145501-ep01.dwg

This plan (or the data transmitted hereon) has been prepared to facilitate the construction and should not be used for any other purpose. Ratio consultants is responsible whenever for the use of unapproved plans in any construction or for any commercial purposes. Not-Not dimensions of all design lines, grid lines, control lines, recovery, make and bench marks should be verified and confirmed against the latest information at construction. Ratio is to be notified immediately of any error or discrepancy and the matter raised prior to the commencement or construction of any work. This note is an integral part of this plan/data. Reproduction of this plan or any part of it without this note being included in full will render the information shown on such reproduction invalid and not suitable for use.

DISCLAIMER - Ratio therefore disclaims any liability whatsoever and howsoever caused for loss or damage arising from a third party's reliance of the plan/data (whether inadvertent or not) caused by the failure to inform any such third party of the limitations which apply to the information contained in this plan/within the accompanying data.

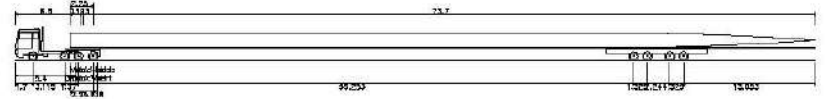


WTG Blade Transport Design Vehicle (78m Blade)

VEHICLE ENVELOPE (FORWARD)

WHEEL TRACKING PATHS

Wind Length 26.50m
 Wheel Width 2.50m
 Road Width 5.00m
 Wheel Spacing 3.75m



ISSUE	A/P/D	DATE	AMENDMENT
A	-	06/06/17	PRELIMINARY ISSUE

GENERAL NOTES:
 1. BASE INFORMATION OBTAINED FROM RING MAPS ON 12/11/17

DESIGNED: D. MOFFATT
 CHECKED: A. WALLEY
 AUTHORISED: A. WALLEY
 SCALE: 0 5 10

ratio:
 RATIO CONSULTANTS PTY LTD
 ACN 905 422 104
 150/151 WILSON STREET
 RICHMOND, VICTORIA 3121
 TELEPHONE: (03) 9438 9111
 FACSIMILE: (03) 9438 9111

WILLATOOK WIND FARM
 SWEEP PATH ASSESSMENT
 HENTY HWY / PRINCES HWY

DATE	SHEET NO.	DRAWING NO.	ISSUE
07/12/2017	2 OF 5	14558T SP01-2	A

This plan (or the data transmitted herewith) has been prepared to facilitate the construction and should not be used for any other purpose. Ratio accepts no responsibility whatsoever for the use of unapproved plans in any construction or for any commercial purposes. The data dimensions of all design items, gird lines, control lines, roadway marks and bench marks should be verified and confirmed against the latest information at construction. Ratio is to be notified immediately of any error or discrepancy and the matter resolved prior to the commencement or construction of any work. This note is an integral part of the plan/data/reproduction of this plan or any part of it without the note being included in full will render the information shown on such reproduction invalid and not suitable for use.

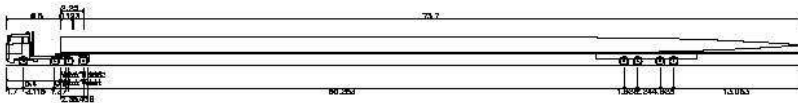
DISCLAIMER - Ratio therefore disclaims any liability whatsoever and howsoever caused for loss or damage arising from a third party's reliance on the plan/data (whether fraudulent or not) caused by the failure to inform any such third party of the information contained in this plan/data in the accompanying data.

WTG Blade Transport Design Vehicle (78m Blade)

VEHICLE ENVELOPE (FORWARD)

WHEEL TRACKING PATHS

Overall Length 78.00m
Overall Width 10.00m
Wheel Track Width 2.50m
Wheel Track Spacing 1.50m



GENERAL NOTES

1. BASE INFORMATION OBTAINED FROM DING MAPS ON 11/11/17

DESIGNED D. MOFFATT

CHECKED A. WALLEY

AUTHORISED A. WALLEY

SCALE 0 5 10

ratio:

RATIO CONSULTANTS PTY LTD
ACN 009 422 104
11 DRAFTER STREET
REDFORD, VICTORIA 3121
TELEPHONE: 03 9488 8111
FACSIMILE: (03) 9488 2011

WILLATOCK WIND FARM

SWEPT PATH ASSESSMENT
PRINCES HWY / TYRENDARRA-ETTRICK RD

DATE 07/12/2017

SHEET NO. 3 OF 5

DRAWING NO. 14558T SP01-3

ISSUE A

C:\Users\jason_15200\Documents\14558T\14558T-SP01-3.dwg

This plan (or the data transmitted herewith) has been prepared to facilitate the construction and should not be used for any other purpose. Ratio accepts no responsibility whatsoever for the use of unapproved plans in any construction or for any commercial purposes. Set-out dimensions of all design lines, g'd lines, control lines, recovery marks and bench marks should be verified and confirmed against the latest information at construction. Ratio is to be notified immediately of any error or discrepancy and the matter resolved prior to the commencement or continuation of any work. This note is an integral part of the plan/data/reproduction of the plan at any part of it without this note being included is not valid. The information shown on such reproduction is void and not suitable for use.

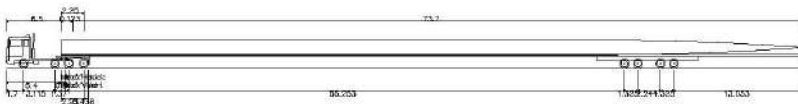
DISCLAIMER - Ratio therefore disclaims any liability whatsoever and however caused for loss or damage arising from a third party's misuse of the plan/data (whether in whole or not) caused by the failure to inform any such third party of the limitations which apply to the information contained in this plan/with the accompanying data.

WTG Blade Transport Design Vehicle (78m Blade)

VEHICLE ENVELOPE (FORWARD)

WHEEL TRACKING PATHS

Overall Length 78.100m
Overall Width 12.100m
Wheel Track Spacing 1.200m
Wheel Track Angle 37.50°



CAD FILE: V:\4801-1500014558T - willatook wind farm\data\chase\2017.11.08\4558T-sect1.dwg

ISSUE	APP'D	DATE	AMENDMENT
A	-	00/00/17	PRELIMINARY ISSUE

GENERAL NOTES
1. BASE INFORMATION OBTAINED FROM BING MAPS ON 17/11/17

DESIGNED	D MOFFATT
CHECKED	A WALLEY
AUTHORISED	A WALLEY
SCALE	0 5 10

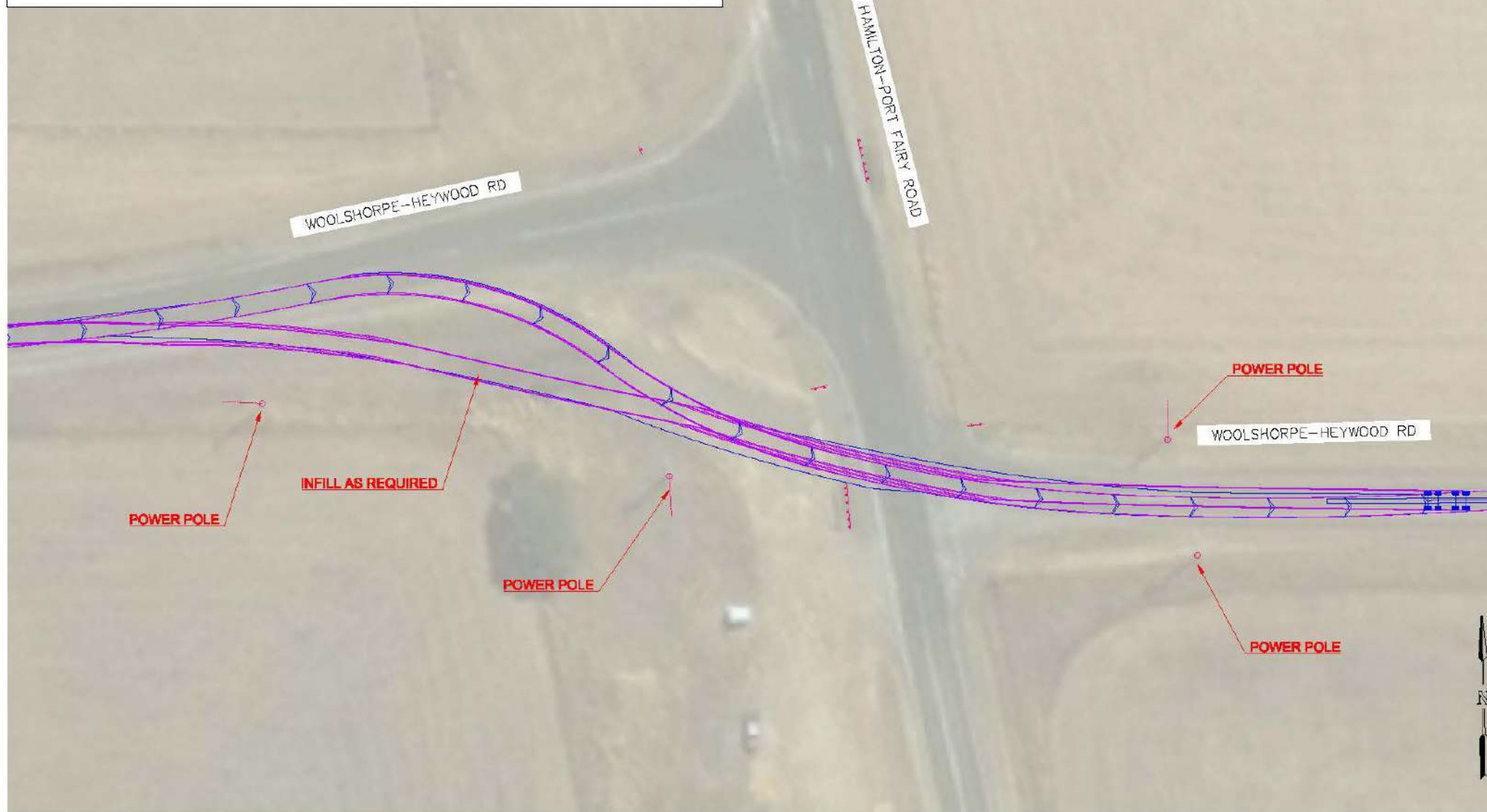
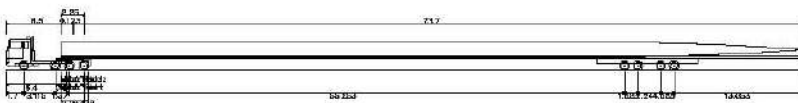
ratio:
RATIO CONSULTANTS PTY LTD
ACN 005 422 104
9 OLIPHANT STREET
RICHMOND, VICTORIA 3121
TELEPHONE: (03) 9480 9111
FAX: (03) 9480 9011

WILLATOOK WIND FARM			
SWEEP PATH ASSESSMENT			
TYRENDARRA / WOOLSHORPE			
DATE	SHEET NO.	DRAWING NO.	ISSUE
07/12/2017	4 OF 5	1455BT SP01-4	A

WTG Blade Transport Design Vehicle (78m Blade)



Overall Length	78.10 cm
Overall Depth	2.50 cm
Chest Width	2.00 cm
Look-in-kick time	2.00 s
100 m Wind Time	27.50 s



A	—	00/00/17	PRELIMINARY ISSUE
ISSUE	APP'D	DATE	AMENDMENT

DESIGNED D. MOFFATT

CHECKED	A. WALLEY
---------	-----------

AUTHORISED A. WALLEY

SCALE 0 5 10

ratio:

RATIO CONSULTANTS PTY LTD
ACN 085 422 104
8 CLIFTON STREET
MORIMOND, VICTORIA 3161
TELEPHONE (03) 840 5411
FACSIMILE (03) 840 3091

WILLATOOK WIND FARM

SWEPT PATH ASSESSMENT
WOOLSHORPE / HAMILTON-PORT FAIRY

DATE	SHEET NO.	DRAWING NO.	ISSUE
07/12/2017	5 OF 5	14558T SPO1-5	A