



UPC Renewables Australia Pty Ltd

ACN 616 856 672

ABN 27616 856 672

Suite 2, Level 2, 15 Castray Esplanade

Battery Point, TAS, 7004

26 August 2019

[REDACTED]
[REDACTED]
Department of the Environment and Energy
GPO Box 787
CANBERRA ACT 2601

Via email: [REDACTED]@environment.gov.au

**Jim's Plain Renewable Energy Park (2017/8065)
Variation Request 3 – August 2019**

Dear [REDACTED]

The Jim's Plain Renewable Energy Park (the Project) was referred to the Department in October 2017. The Project was determined to be a Controlled Action (2017/8065) requiring assessment and approval under the *Environment Protection and Biodiversity Conservation Act 1999* (EPBC Act). It was determined that the proposed action will have, or is likely to have, a significant impact on the following matters of national environmental significance (MNES), protected under Part 3 of the EPBC Act:

- Listed threatened species and communities (Section 18 and 18A)
- Listed migratory species (Section 20 and 20A)

The proponent elected to undertake a bilateral assessment with the Tasmania Government, as the Project being assessed as a Level 2C project under the *Environmental Management and Pollution Control Act 1994*.

This variation has two components, a change to the Project Description for clarity and variation of the land boundary.

1.0 Project Description Clarification

UPC Renewables seeks to clarify the description of the proposed transmission line in the original referral. The Project will be connected to the broader transmission network by an overhead transmission line, however, the transmission line connection does not form part of the Project description for the referral (2017/8065). This is consistent with advice provided by the Department in a meeting held on the 19th of June 2017. The transmission line will be the subject of a separate

referral to the Department, which will be submitted once we have sufficient information to satisfy the Department's referral requirements.

The submission of the original referral and subsequent variations referred to 30 MW of solar, this was an error, the solar generating capacity of the Project should have been up to 40 MW. This increase in capacity does not result in an expansion of area impacted by the Project. The area for solar generation will still be focused on existing cleared land on the Murrell Holdings Pty Ltd (title references 176467/1).

Given that the area for solar generation will remain the same and is within the previously approved area of the land, there are no additional MNES requiring assessment as part of this change in the Project description.

2.0 Project Land Adjustment

Since the submission of the original referral and the subsequent variations¹, there has been another variation to the Project land, increasing the area of the Project from 683.4 ha to 687.1ha (when measured using title boundaries) (refer to the attached map). The expansion of the Project land does not increase the number of wind turbines proposed for the site, it simply relocates one of the wind turbines and associated infrastructure that was within the previous project boundary to this additional area. The proposed action covers several lots:

- Murrell Holdings Pty Ltd: 176467/1
- Hammonds: 124651/14, 124651/13, 124651/11, 126961/12
- The Cape Grim Water Company Pty Ltd: 142621/1
- Rancho Six Pty Ltd: 126961/20
- Council Road Reserve: 124651/101

This variation covers the expansion of the Project land to include lot 126961/20, as listed above (refer Figure 1).

The expanded area to be incorporated into the Project is similar to the area of the Jim's Plain site previously referred to the Department, comprising mostly of wet heath. A desktop assessment and field survey (terrestrial flora and fauna) has been conducted of the new area to determine the potential for impacts on ecological values and MNES. Field survey has been undertaken. This assessment determined that there were no additional MNES requiring consideration beyond those identified in the original referral (2017/8065).

UPC Renewables is currently finalising a Development Proposal and Environmental Management Plan to be assessed in accordance with the Project Specific Development Proposal and Environmental

¹ Two variations have been submitted previously to the Department and approved in August 2018 and December 2018.

Management Plan Guidelines issued in January 2018 under the bilateral agreement by the Tasmanian and Australian Governments.

After consideration of the above, we would appreciate confirmation that these matters have been reviewed by the Department and the Department's Project definitions, including the Project land and scope, are amended accordingly.

If you require further information in relation to this representation, please contact myself or Madeleine Skerritt on 0400 090 344 or madeleine.skerritt@upcrenewables.com.

Yours sincerely

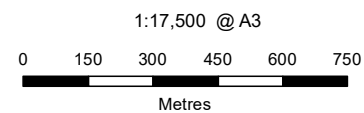
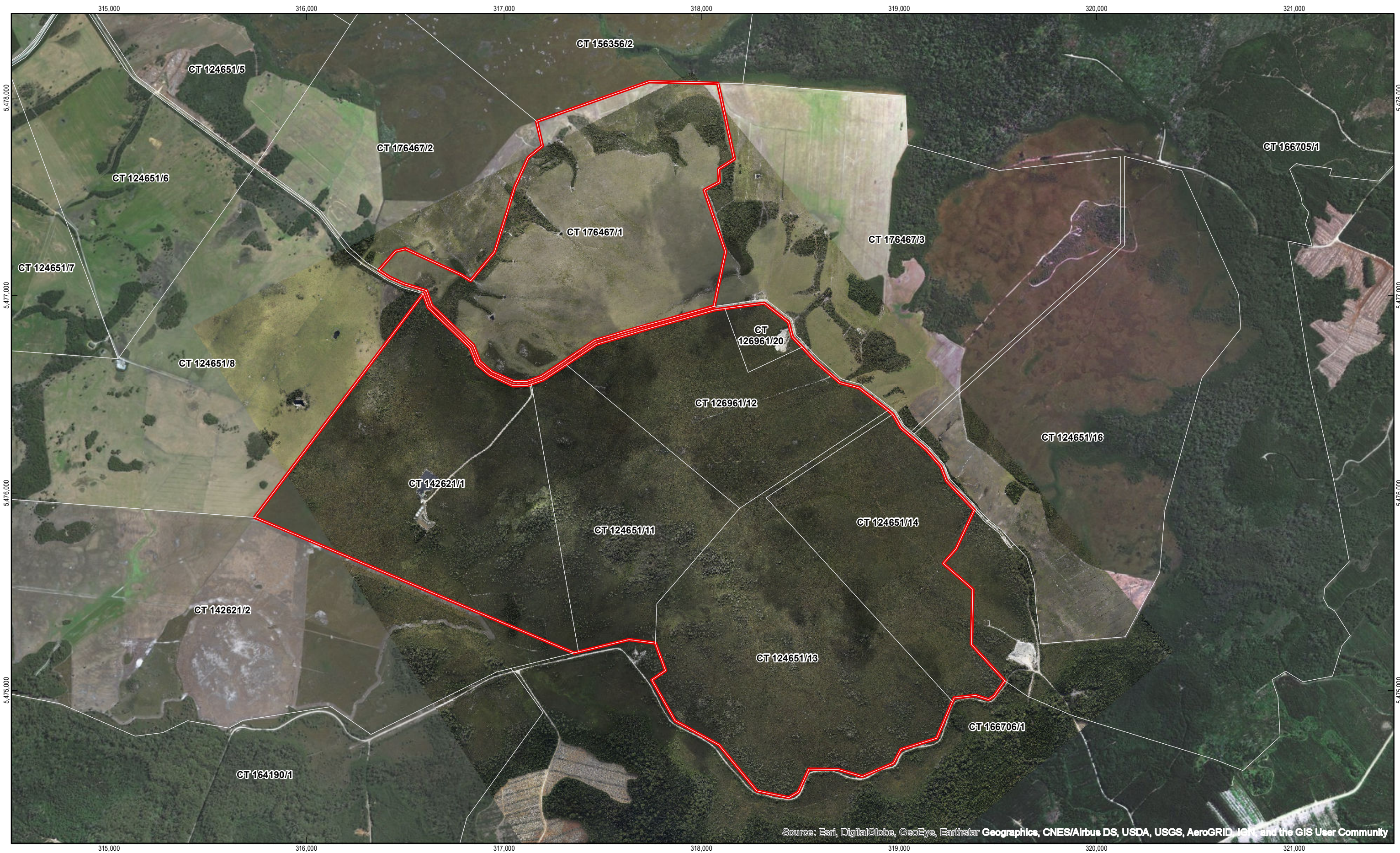
A handwritten signature in blue ink, appearing to read 'D. Pollington', with a stylized flourish at the end.

David Pollington
Chief Operations Officer
UPC Renewables Australia

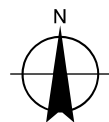
Mobile: +61 408 174 329

Email: david.pollington@upcrenewables.com

Web: www.upcrenewables.com



Map Projection: Transverse Mercator
Horizontal Datum: GDA 1994
Grid: GDA 1994 MGA Zone 55



- Project Site
- Parcel boundary



UPC Robbins Island Pty Ltd
Jim's Plain Renewable Energy Park

Project Boundary

Job Number	32-1855800
Revision	A
Date	23 Aug 2019

G:\32\1855800\GIS\Maps\Working\New Layout Field Maps\20190723\32_1855800_Updated_Project_Boundary_RevA.mxd

© 2019. Whilst every care has been taken to prepare this map, GHD (and DATA CUSTODIAN) make no representations or warranties about its accuracy, reliability, completeness or suitability for any particular purpose and cannot accept liability and responsibility of any kind (whether in contract, tort or otherwise) for any expenses, losses, damages and/or costs (including indirect or consequential damage) which are or may be incurred by any party as a result of the map being inaccurate, incomplete or unsuitable in any way and for any reason.

Data source: UPC Renewables - Imagery, boundary, infrastructure locations, turbine layout, transmission line. GHD - Roads, storage dam. The List - Bore. Created by:savenables

2 Salamanca Square, Hobart Tasmania 7000 Australia T 61 3 6210 0600 E hbamail@ghd.com W www.ghd.com