



APA Transmission Pty Limited  
 Phone: +61 2 9693 0000  
 Web: www.apa.com.au  
 Email: cribpointpakenham@apa.com.au

**PROJECT:** CRIB POINT PAKENHAM PIPELINE

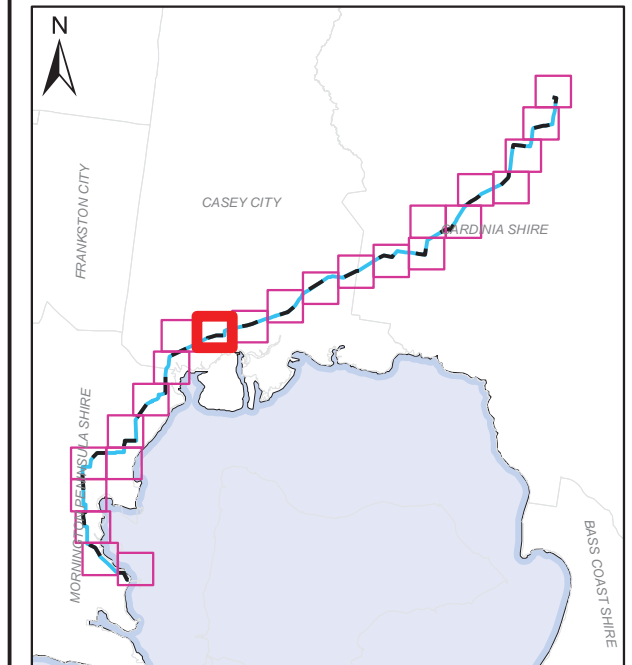
**TITLE:** Proposed Easements

**SUBTITLE:**

**DATE:** 4/09/2018

**DATA SOURCE:**

Service Layer Credits: Source: Esri, DigitalGlobe, GeoEye, Earthstar Geographics, CNES/Airbus DS, USDA, USGS, AeroGRID, IGN, and the GIS User Community  
 Geoscience Australia 2016 Locations and Roads  
 Copyright © The State of Victoria, Department of Environment, Land, Water & Planning 2018



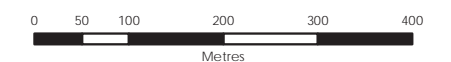
**LEGEND**

- Easement
- Affected Parcels
- Crib Point/Pakenham Facility/MLV Area

**ACCURATE AT DATE OF ISSUE**

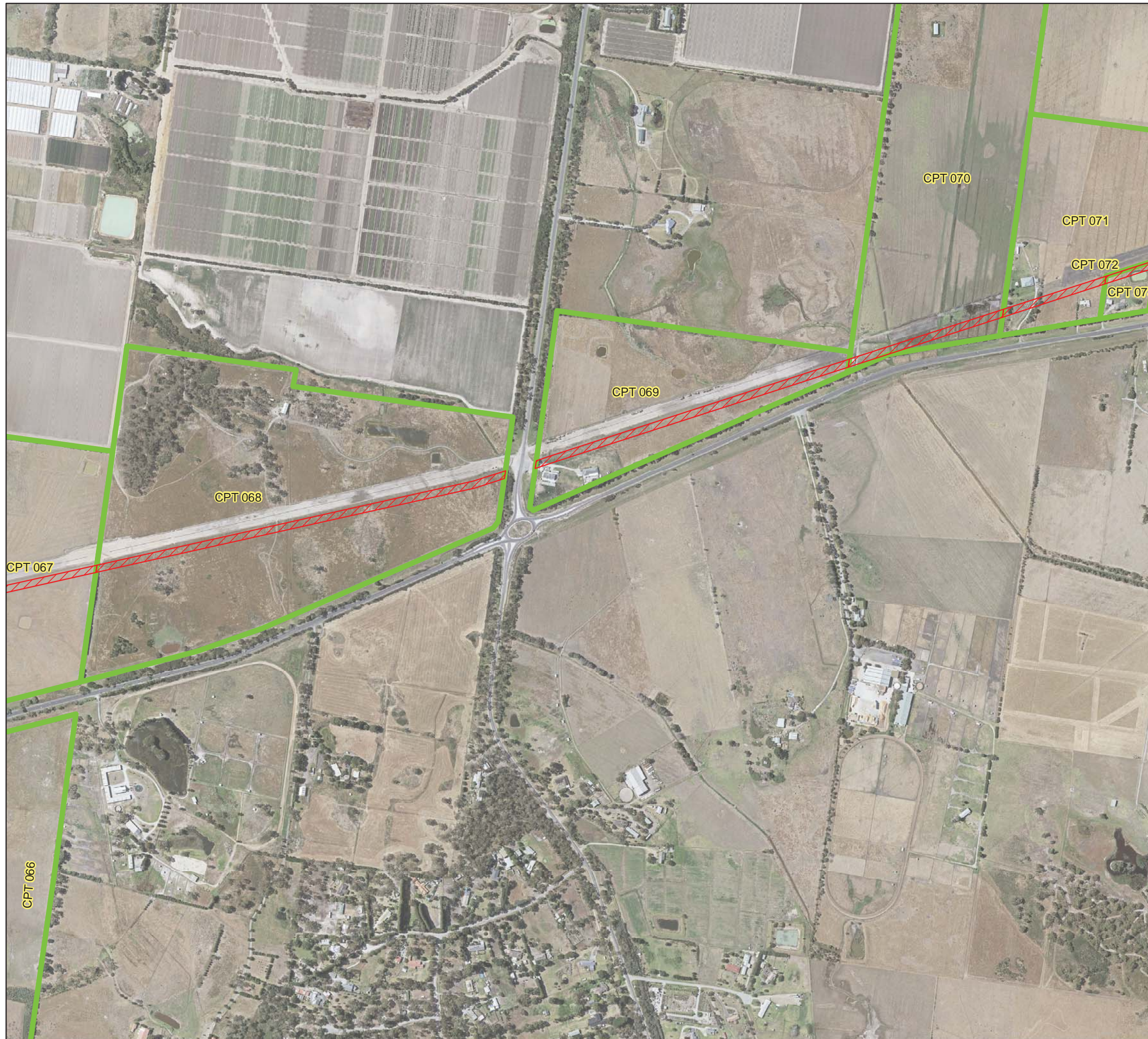
**DOCUMENT NUMBER:** CPT-MAP-L-0052 Page 11 of 24

Revision	Description	Drawn	Checked	QC	Approved	Date
0.2	DRAFT	MB	MF	JB	JB	04/09/18
0.1	DRAFT	MB	AR	JB	JB	21/08/18



**SCALE:** 1:8,000 @ A3 GDA 1994 MGA Zone 55

APA Group does not guarantee the accuracy or completeness of the map and does not make any warranty about the data. APA is not under any liability to the user for any loss or damage (including consequential loss or damage) which the user may suffer resulting from the use of this map. This map is confidential and the information and details contained in it are and remain the property of APA Group. © APA Group 2018.



APA Transmission Pty Limited  
 Phone: +61 2 9693 0000  
 Web: www.apa.com.au  
 Email: cribpointpakenham@apa.com.au

**PROJECT:** CRIB POINT PAKENHAM PIPELINE

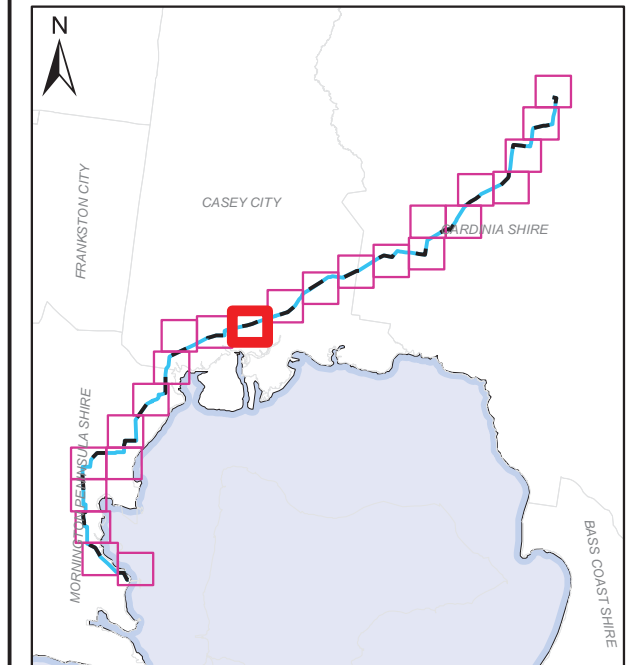
**TITLE:** Proposed Easements

**SUBTITLE:**

**DATE:** 4/09/2018

**DATA SOURCE:**

Service Layer Credits: Source: Esri, DigitalGlobe, GeoEye, Earthstar Geographics, CNES/Airbus DS, USDA, USGS, AeroGRID, IGN, and the GIS User Community  
 Geoscience Australia 2016 Locations and Roads  
 Copyright © The State of Victoria, Department of Environment, Land, Water & Planning 2018



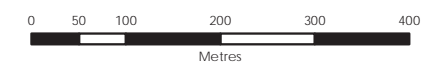
**LEGEND**

- Easement
- Affected Parcels
- Crib Point/Pakenham Facility/MLV Area

**ACCURATE AT DATE OF ISSUE**

**DOCUMENT NUMBER:** CPT-MAP-L-0052 Page 12 of 24

Revision	Description	Drawn	Checked	QC	Approved	Date
0.2	DRAFT	MB	MF	JB	JB	04/09/18
0.1	DRAFT	MB	AR	JB	JB	21/08/18



**SCALE:** 1:8,000 @ A3 GDA 1994 MGA Zone 55

APA Group does not guarantee the accuracy or completeness of the map and does not make any warranty about the data. APA is not under any liability to the user for any loss or damage (including consequential loss or damage) which the user may suffer resulting from the use of this map. This map is confidential and the information and details contained in it are and remain the property of APA Group. © APA Group 2018.



APA Transmission Pty Limited  
 Phone: +61 2 9693 0000  
 Web: www.apa.com.au  
 Email: cribpointpakenham@apa.com.au

**PROJECT:** CRIB POINT PAKENHAM PIPELINE

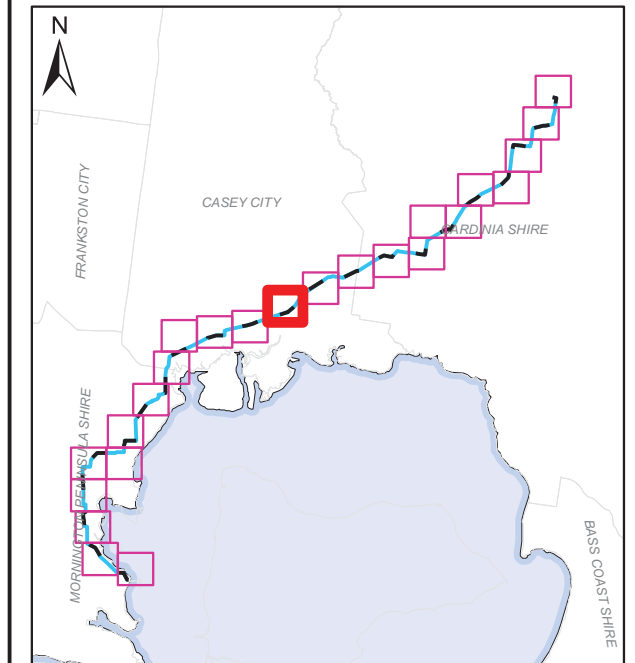
**TITLE:** Proposed Easements

**SUBTITLE:**

**DATE:** 4/09/2018

**DATA SOURCE:**

Service Layer Credits: Source: Esri, DigitalGlobe, GeoEye, Earthstar Geographics, CNES/Airbus DS, USDA, USGS, AeroGRID, IGN, and the GIS User Community  
 Geoscience Australia 2016 Locations and Roads  
 Copyright © The State of Victoria, Department of Environment, Land, Water & Planning 2018



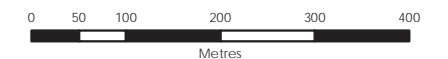
**LEGEND**

- Easement
- Affected Parcels
- Crib Point/Pakenham Facility/MLV Area

**ACCURATE AT DATE OF ISSUE**

**DOCUMENT NUMBER:** CPT-MAP-L-0052 Page 13 of 24

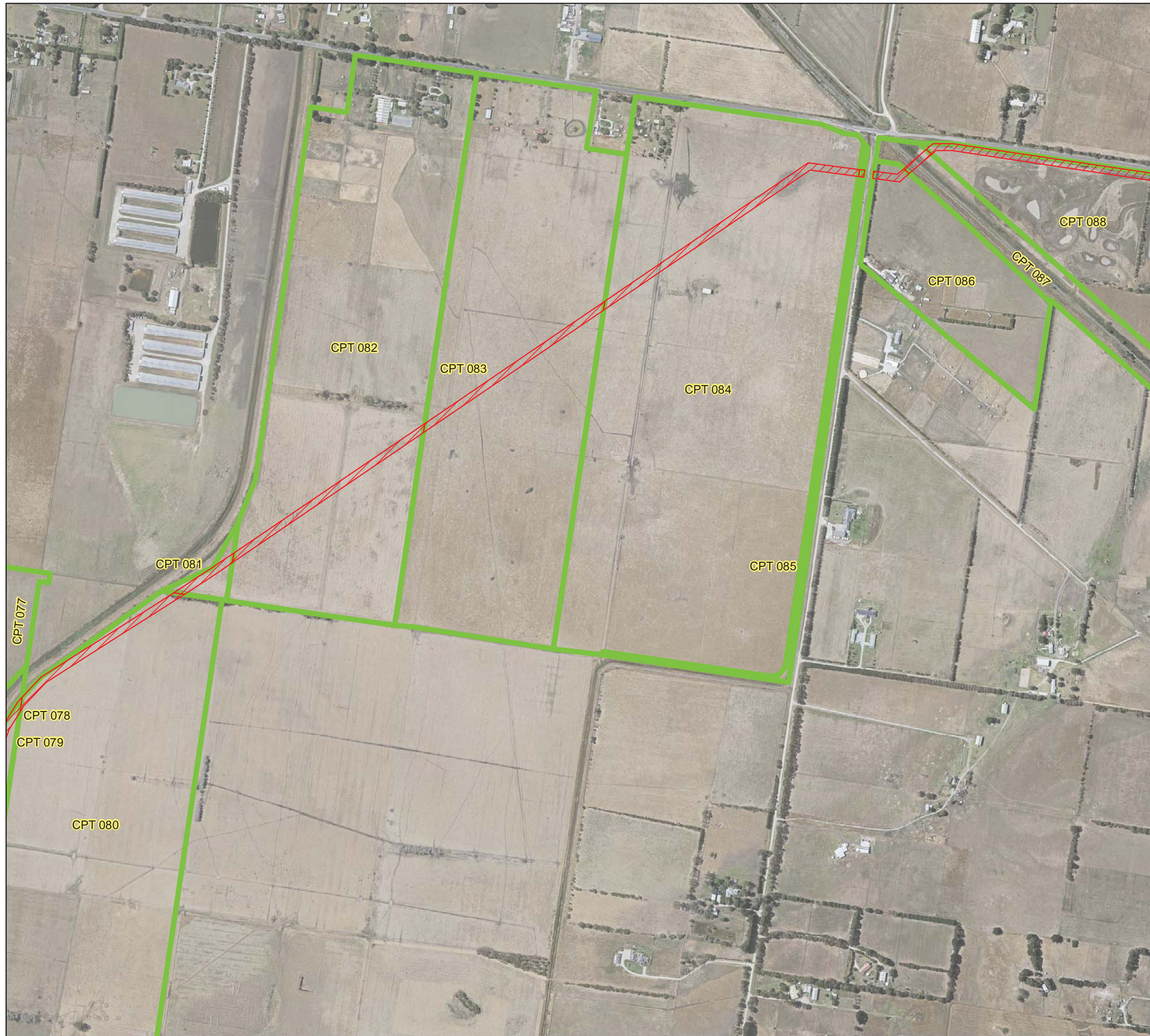
Revision	Description	Drawn	Checked	QC	Approved	Date
0.2	DRAFT	MB	MF	JB	JB	04/09/18
0.1	DRAFT	MB	AR	JB	JB	21/08/18



**SCALE:** 1:8,000 @ A3 GDA 1994 MGA Zone 55

APA Group does not guarantee the accuracy or completeness of the map and does not make any warranty about the data. APA is not under any liability to the user for any loss or damage (including consequential loss or damage) which the user may suffer resulting from the use of this map. This map is confidential and the information and details contained in it are and remain the property of APA Group. © APA Group 2018.

\\pipeline\trust\apps\GIS\Projects\Crib\_P1\_Pakenham\_Pipeline\Maps\CPT-MAP-L-0052\_PipelineRoute\_ProposedEasements\_0.1.mxd - 04 Sep 2018 - matbec



APA Transmission Pty Limited  
 Phone: +61 2 9693 0000  
 Web: www.apa.com.au  
 Email: cribpointpakenham@apa.com.au

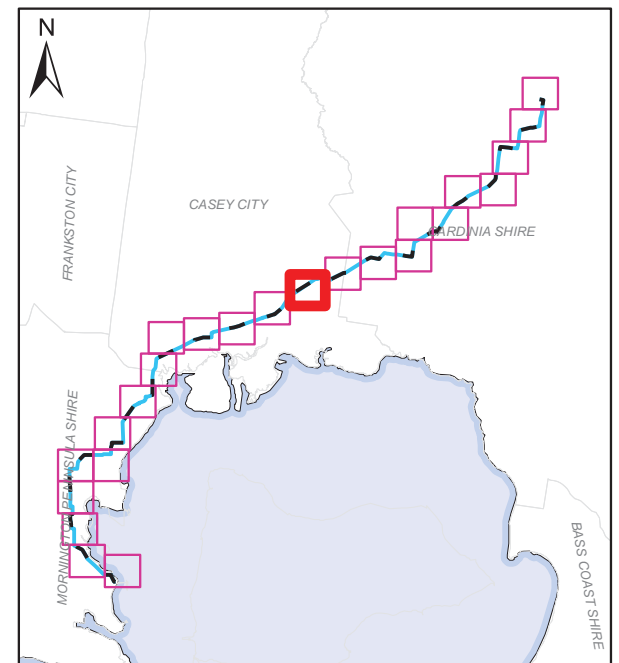
**PROJECT:** CRIB POINT PAKENHAM PIPELINE

**TITLE:** Proposed Easements

**SUBTITLE:**

**DATE:** 4/09/2018

**DATA SOURCE:**  
 Service Layer Credits: Source: Esri, DigitalGlobe, GeoEye, Earthstar  
 Geographics, CNES/Airbus DS, USDA, USGS, AeroGRID, IGN, and the GIS User  
 Community  
 Geoscience Australia 2016 Locations and Roads  
 Copyright © The State of Victoria, Department of Environment, Land, Water &  
 Planning 2018

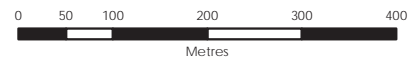


- LEGEND**
- Easement
  - Affected Parcels
  - Crib Point/Pakenham Facility/MLV Area

**ACCURATE AT  
DATE OF ISSUE**

**DOCUMENT NUMBER:** CPT-MAP-L-0052 Page 14 of 24

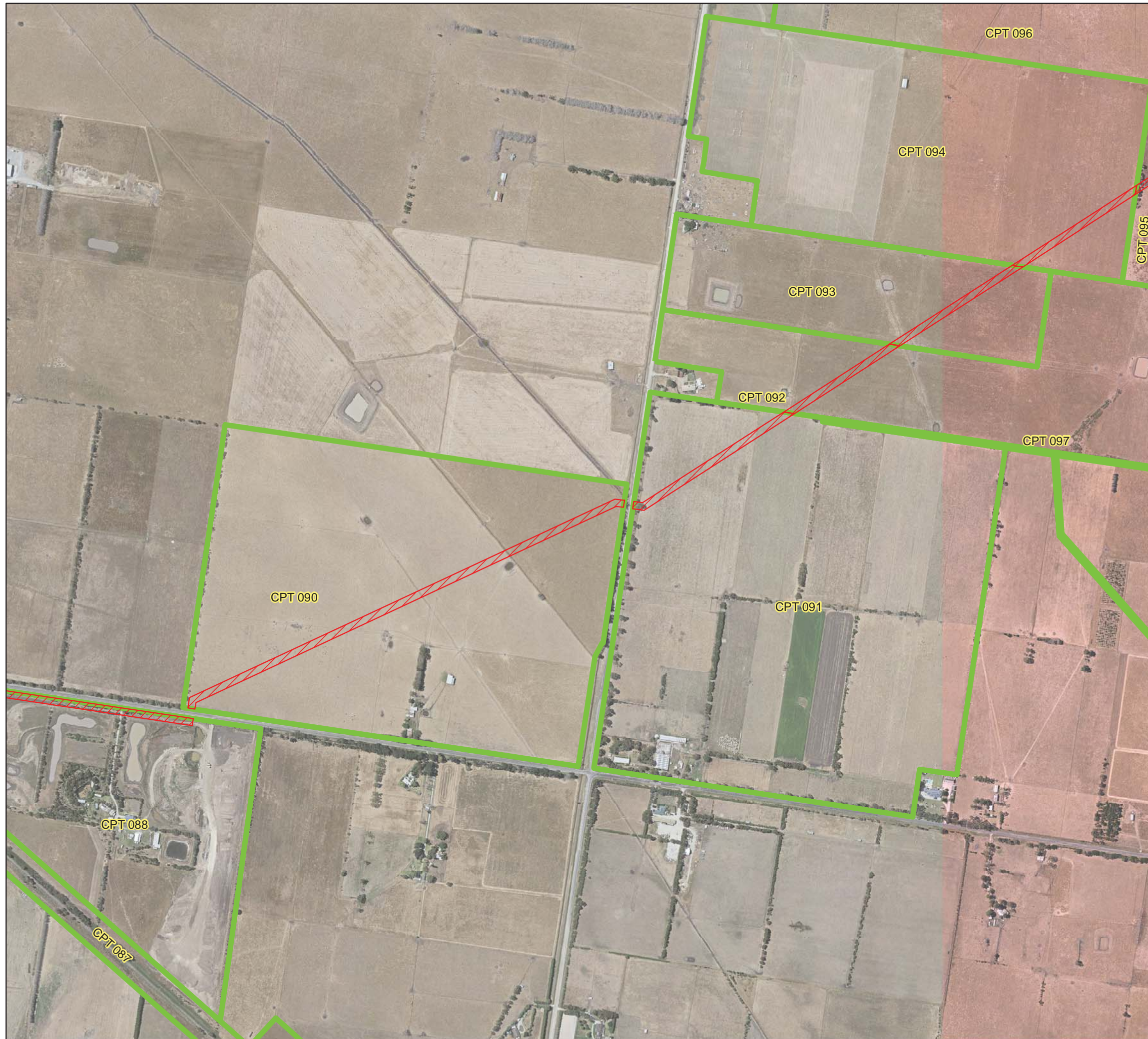
Revision	Description	Drawn	Checked	QC	Approved	Date
0.2	DRAFT	MB	MF	JB	JB	04/09/18
0.1	DRAFT	MB	AR	JB	JB	21/08/18



**SCALE:** 1:8,000 @ A3 GDA 1994 MGA Zone 55

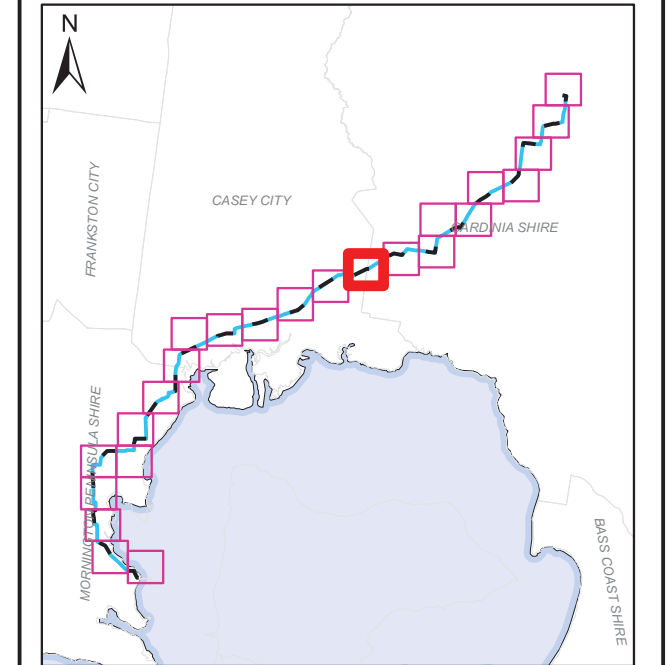
APA Group does not guarantee the accuracy or completeness of the map and does not make any warranty about the data. APA is not under any liability to the user for any loss or damage (including consequential loss or damage) which the user may suffer resulting from the use of this map. This map is confidential and the information and details contained in it are and remain the property of APA Group. © APA Group 2018.

\\pipeline\apps\GIS\Projects\Pipeline\_Pakenham\_Pipeline\Maps\CPT-MAP-L-0052\_PipelineRoute\_ProposedEasements\_0.1.mxd - 04 Sep 2018 - matbec






**PROJECT:** CRIB POINT PAKENHAM PIPELINE  
**TITLE:** Proposed Easements  
**SUBTITLE:**  
**DATE:** 4/09/2018

**DATA SOURCE:**  
 Service Layer Credits: Source: Esri, DigitalGlobe, GeoEye, Earthstar Geographics, CNES/Airbus DS, USDA, USGS, AeroGRID, IGN, and the GIS User Community  
 Geoscience Australia 2016 Locations and Roads  
 Copyright © The State of Victoria, Department of Environment, Land, Water & Planning 2018



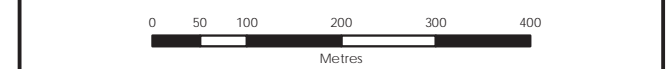
**LEGEND**

-  Easement
-  Affected Parcels
-  Crib Point/Pakenham Facility/MLV Area

**ACCURATE AT DATE OF ISSUE**

**DOCUMENT NUMBER:** CPT-MAP-L-0052 Page 15 of 24

Revision	Description	Drawn	Checked	QC	Approved	Date
0.2	DRAFT	MB	MF	JB	JB	04/09/18
0.1	DRAFT	MB	AR	JB	JB	21/08/18



**SCALE:** 1:8,000 @ A3 GDA 1994 MGA Zone 55

APA Group does not guarantee the accuracy or completeness of the map and does not make any warranty about the data. APA is not under any liability to the user for any loss or damage (including consequential loss or damage) which the user may suffer resulting from the use of this map. This map is confidential and the information and details contained in it are and remain the property of APA Group. © APA Group 2018.

\\pipelinetrust\apps\GIS\Projects\Crib\_P1\_Pakenham\_Pipeline\Maps\CPT\_MAP-L-0052\_PipelineRoute\_ProposedEasements\_0.1.mxd - 04 Sep 2018 - matbec



APA Transmission Pty Limited  
 Phone: +61 2 9693 0000  
 Web: www.apa.com.au  
 Email: cribpointpakenham@apa.com.au

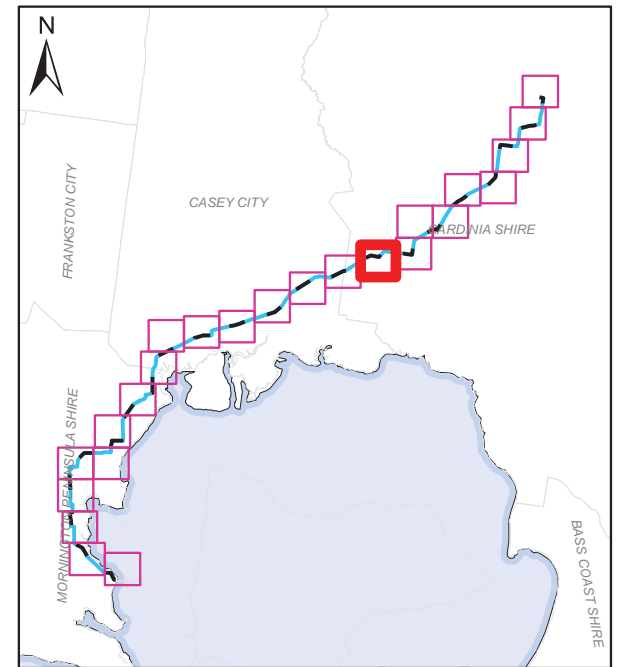
**PROJECT:** CRIB POINT PAKENHAM PIPELINE

**TITLE:** Proposed Easements

**SUBTITLE:**

**DATE:** 4/09/2018

**DATA SOURCE:**  
 Service Layer Credits: Source: Esri, DigitalGlobe, GeoEye, Earthstar  
 Geographics, CNES/Airbus DS, USDA, USGS, AeroGRID, IGN, and the GIS User  
 Community  
 Geoscience Australia 2016 Locations and Roads  
 Copyright © The State of Victoria, Department of Environment, Land, Water &  
 Planning 2018

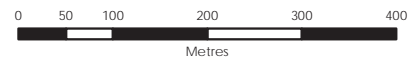


- LEGEND**
- Easement
  - Affected Parcels
  - Crib Point/Pakenham Facility/MLV Area

**ACCURATE AT DATE OF ISSUE**

**DOCUMENT NUMBER:** CPT-MAP-L-0052 Page 16 of 24

Revision	Description	Drawn	Checked	QC	Approved	Date
0.2	DRAFT	MB	MF	JB	JB	04/09/18
0.1	DRAFT	MB	AR	JB	JB	21/08/18



**SCALE:** 1:8,000 @ A3 GDA 1994 MGA Zone 55

APA Group does not guarantee the accuracy or completeness of the map and does not make any warranty about the data. APA is not under any liability to the user for any loss or damage (including consequential loss or damage) which the user may suffer resulting from the use of this map. This map is confidential and the information and details contained in it are and remain the property of APA Group. © APA Group 2018.

\\pipeline\trust\apps\GIS\Projects\Crib\_P1\_Pakenham\_Pipeline\Maps\CPT\_MAP-L-0052\_PipelineRoute\_ProposedEasements\_0.1.mxd - 04 Sep 2018 - matbec



APA Transmission Pty Limited  
 Phone: +61 2 9693 0000  
 Web: www.apa.com.au  
 Email: cribpointpakenham@apa.com.au

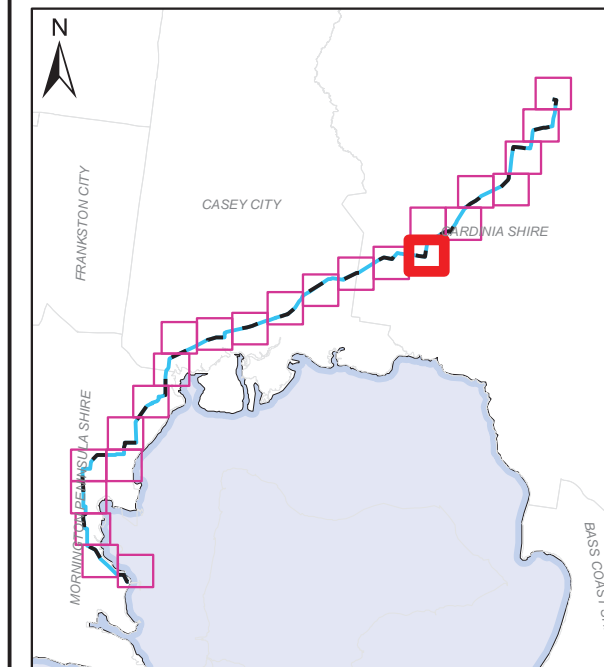
**PROJECT:** CRIB POINT PAKENHAM PIPELINE

**TITLE:** Proposed Easements

**SUBTITLE:**

**DATE:** 4/09/2018

**DATA SOURCE:**  
 Service Layer Credits: Source: Esri, DigitalGlobe, GeoEye, Earthstar Geographics, CNES/Airbus DS, USDA, USGS, AeroGRID, IGN, and the GIS User Community  
 Geoscience Australia 2016 Locations and Roads  
 Copyright © The State of Victoria, Department of Environment, Land, Water & Planning 2018

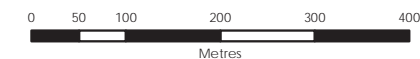


- LEGEND**
- Easement
  - Affected Parcels
  - Crib Point/Pakenham Facility/MLV Area

**ACCURATE AT DATE OF ISSUE**

**DOCUMENT NUMBER:** CPT-MAP-L-0052 Page 17 of 24

Revision	Description	Drawn	Checked	QC	Approved	Date
0.2	DRAFT	MB	MF	JB	JB	04/09/18
0.1	DRAFT	MB	AR	JB	JB	21/08/18



**SCALE:** 1:8,000 @ A3 GDA 1994 MGA Zone 55

APA Group does not guarantee the accuracy or completeness of the map and does not make any warranty about the data. APA is not under any liability to the user for any loss or damage (including consequential loss or damage) which the user may suffer resulting from the use of this map. This map is confidential and the information and details contained in it are and remain the property of APA Group. © APA Group 2018.

\\pipeline\trust\apps\GIS\Projects\Crib\_P1\_Pakenham\_Pipeline\Maps\CPT\_MAP-L-0052\_PipelineRoute\_ProposedEasements\_0.1.mxd - 04 Sep 2018 - matbec