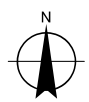
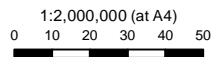


LEGEND

- Town
- ⚓ Major Port
- State Road
- Existing Railway
- Watercourse
- Rail Option 1 (Alpha)
- Rail Option 2 (Goonyella)
- Rail Option 3 (Adani)
- Carmichael Coal Mine Site
- Local Govt Boundary
- Waterbody

Based on or contains data provided by the State of QLD (DERM) [2010]. In consideration of the State permitting use of this data you acknowledge and agree that the State gives no warranty in relation to the data (including accuracy, reliability, completeness, currency or suitability) and accepts no liability (including without limitation, liability in negligence) for any loss, damage or costs (including consequential damage) relating to any use of the data. Data must not be used for marketing or be used in breach of the privacy laws.

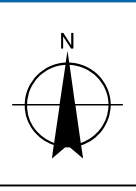
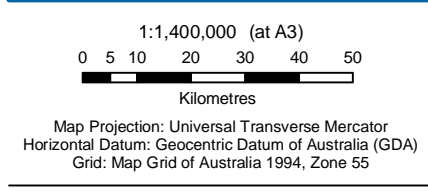
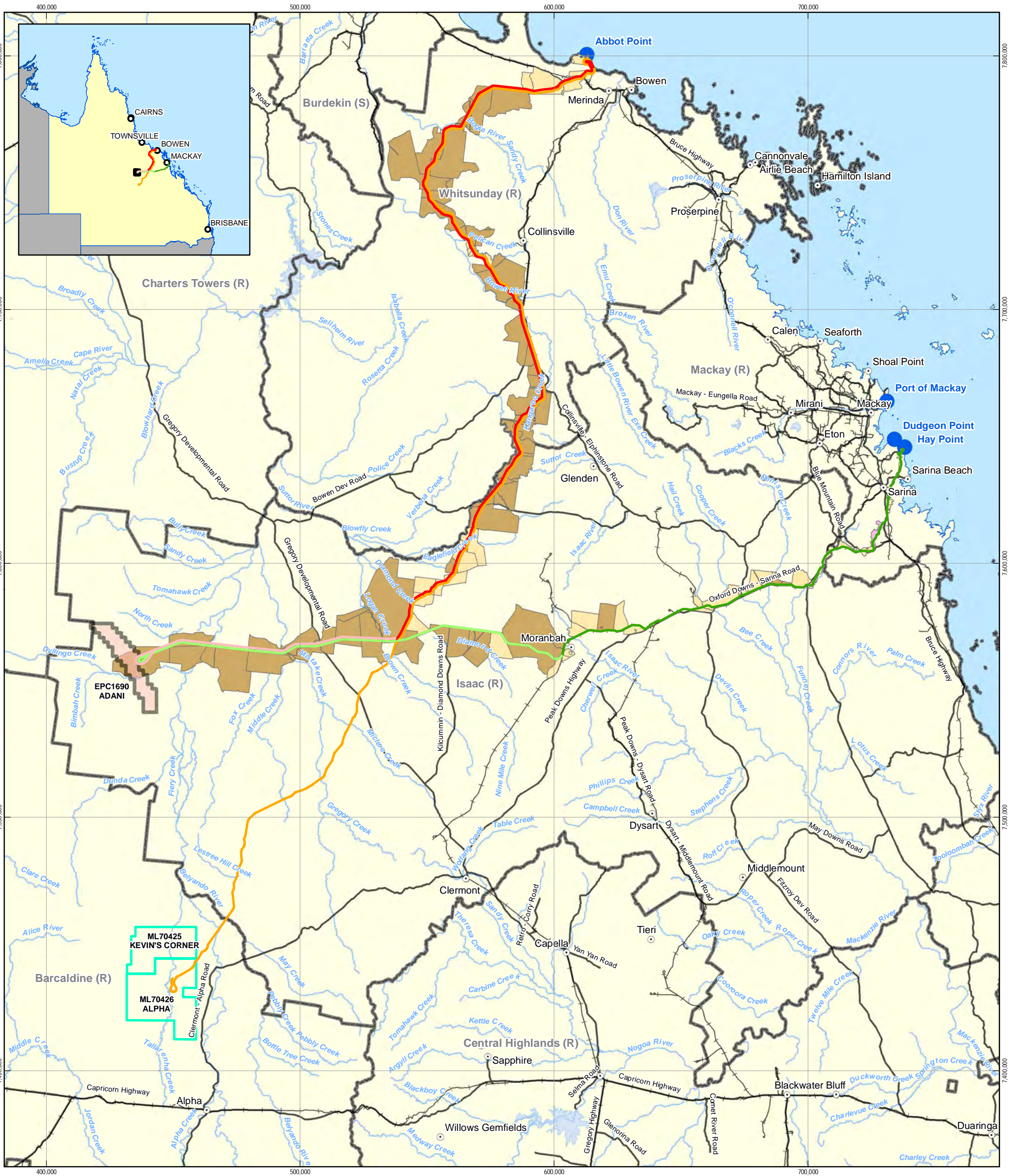


Adani Mining Pty Ltd
Carmichael Coal Mine and Rail Project

Job Number | 41-23244
Revision | A
Date | 19-10-2010

Rail Options

Figure: 1

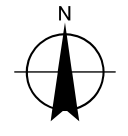
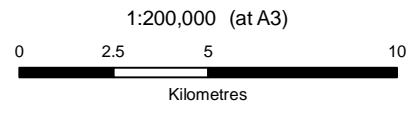
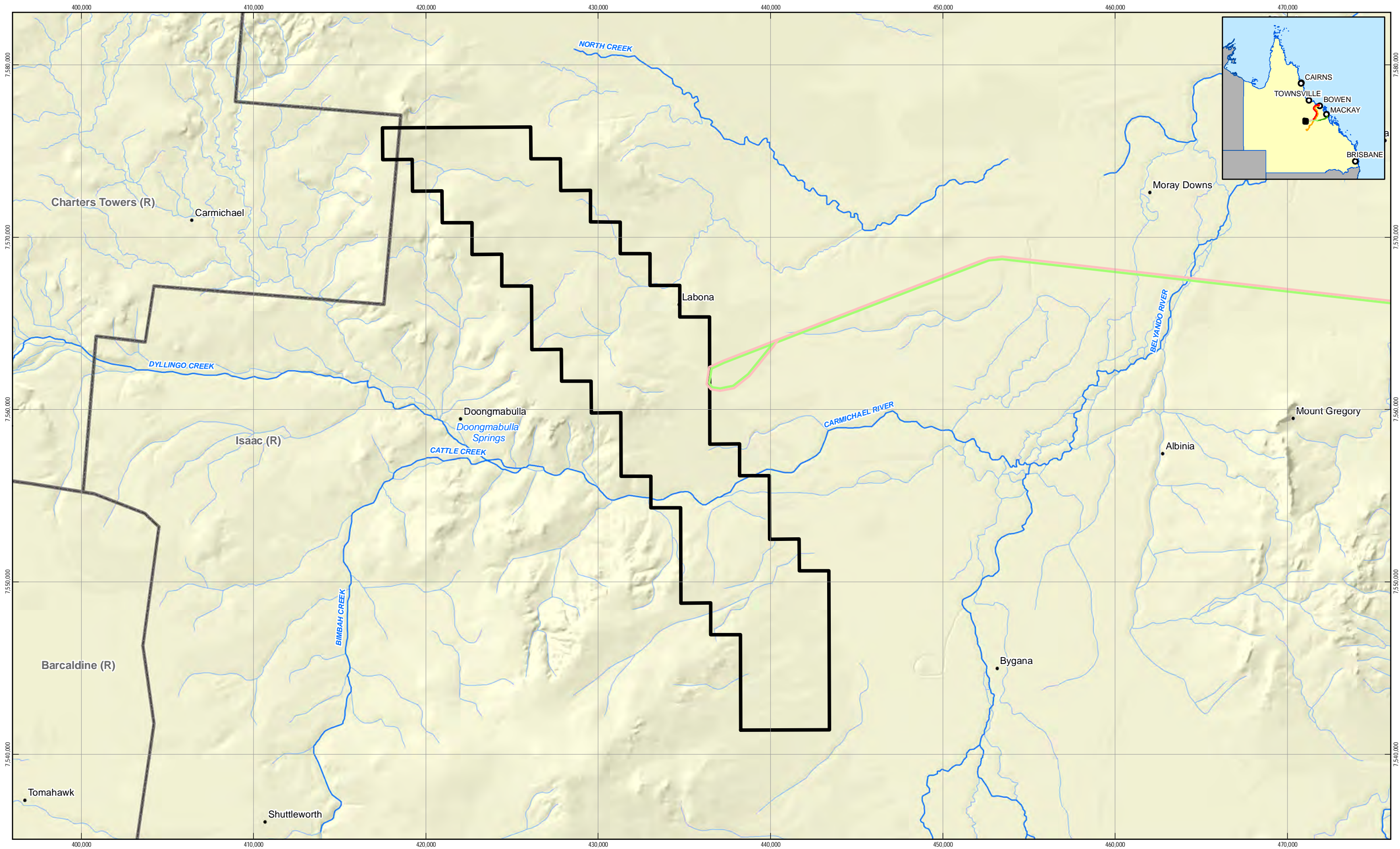


ADANI GROUP
Carmichael Coal Mine and Rail Project

Job Number | 41-23244
Revision | A
Date | 16 SEP 2010

Land Tenure Traversed By Rail Options **Figure 2**

G:\1123244\GIS\Maps\MXD\41-23244_102_rev_a.mxd
Level 4, 201 Charlotte St Brisbane QLD 4000 T 61 7 3316 3000 F 61 7 3316 3333 E bnemail@ghd.com.au W www.ghd.com.au
© 2010. While GHD has taken care to ensure the accuracy of this product, GHD and GA, DME, DMR, Hancock Prospecting Pty Ltd, ABS make no representations or warranties about its accuracy, completeness or suitability for any particular purpose. GHD and GA, DME, DMR, Hancock Prospecting Pty Ltd, ABS cannot accept liability of any kind (whether in contract, tort or otherwise) for any expenses, losses, damages and/or costs (including indirect or consequential damage) which are or may be incurred as a result of the product being inaccurate, incomplete or unsuitable in any way and for any reason.
Data source: Towns, Railways, Watercourse, Waterbodies - ©Commonwealth of Australia (Geoscience Australia) 250K Topo Data/2007; DME - Mining Leases/2010; DMR - State Controlled Roads/2010; Hancock Prospecting Pty Ltd - Hancock Alpha Alignment/2010; GHD - Goonyella Rail/2010; Major Ports/2010; ABS - Local Government/2009. Created by: TM



LEGEND	
Rail Option 1 (Alpha Greenfields)	Study Area - EPC1690
Rail Option 2 (Goonyella Greenfields)	Local Government Boundary
Major watercourse	Town
Minor watercourse	Homestead

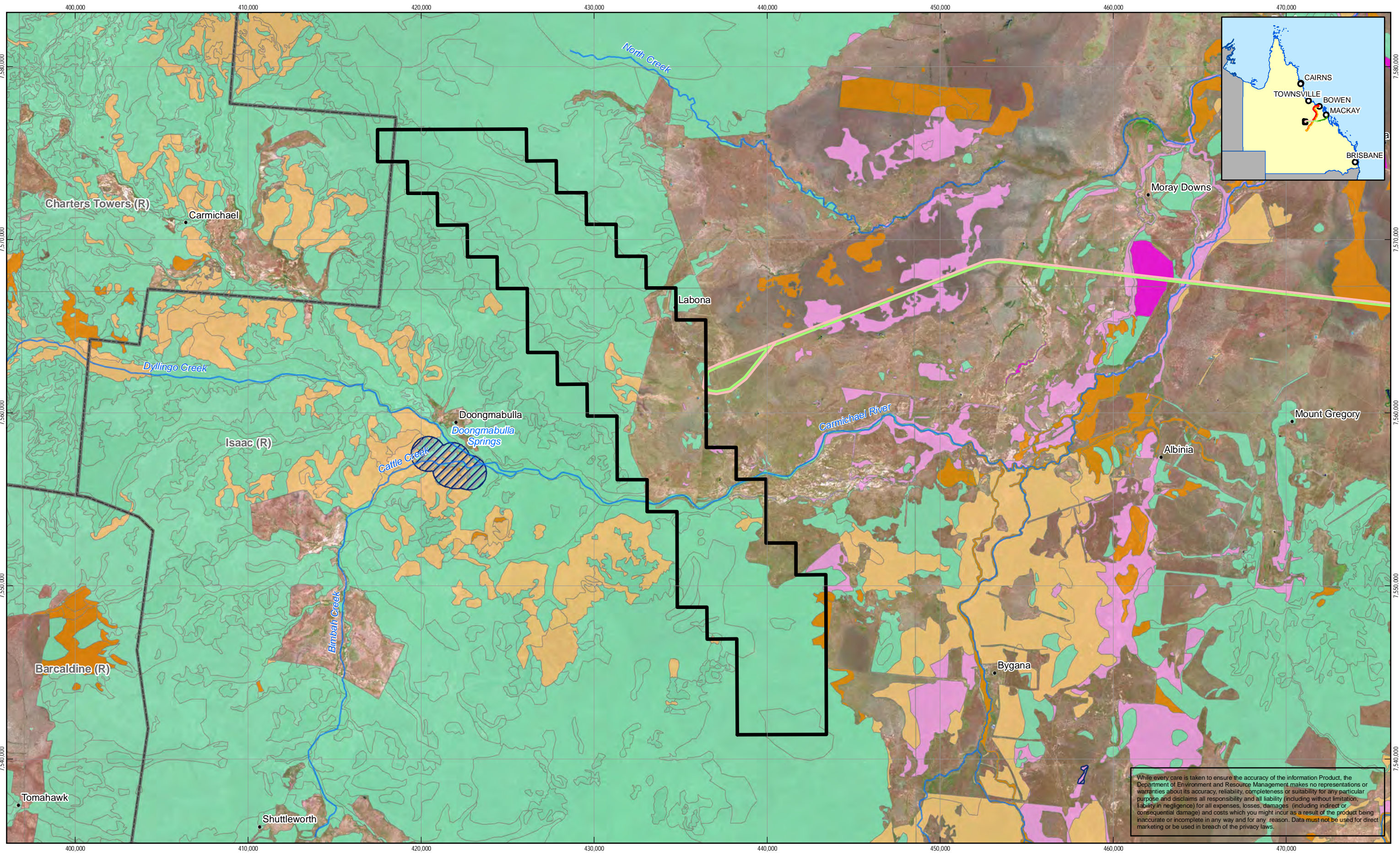


ADANI GROUP
Carmichael Coal Mine and Rail Project

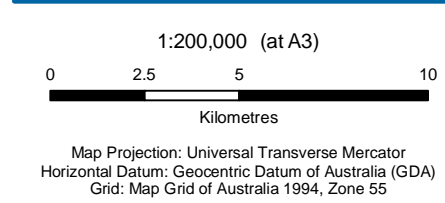
Job Number	41-23244
Revision	A
Date	16 SEP 2010

Watercourses Surrounding the Mining Lease

Figure 3



While every care is taken to ensure the accuracy of the information Product, the Department of Environment and Resource Management makes no representations or warranties about its accuracy, reliability, completeness or suitability for any particular purpose and disclaims all responsibility and all liability (including without limitation, liability in negligence) for all expenses, losses, damages (including indirect or consequential damage) and costs which you might incur as a result of the product being inaccurate or incomplete in any way and for any reason. Data must not be used for direct marketing or be used in breach of the privacy laws.



LEGEND

- Town
- Homestead
- Rail Option 1 (Alpha Greenfields)
- Rail Option 2 (Goonyella Greenfields)
- Watercourse
- ▭ Study Area - EPC1690
- ▭ Local Government Boundary
- ▨ Essential Habitat
- Regional Ecosystem (v6)**
- Endangered - Dominant
- Endangered - Subdominant
- Of Concern - Dominant
- Of Concern - Subdominant
- Not of Concern
- Non-remnant



ADANI GROUP
Carmichael Coal Mine and Rail Project
Regional Ecosystem and Essential Habitat Mapping for the Mining Lease

Job Number | 41-23244
Revision | A
Date | 16 SEP 2010

Figure 4