

Public Survey Results

Shoreline

a new community by the Bay

Thank you Redlands!

We distributed an 18 question survey to Redlands households via the Bayside Bulletin, a kiosk at Victoria Point Lakeside and online.

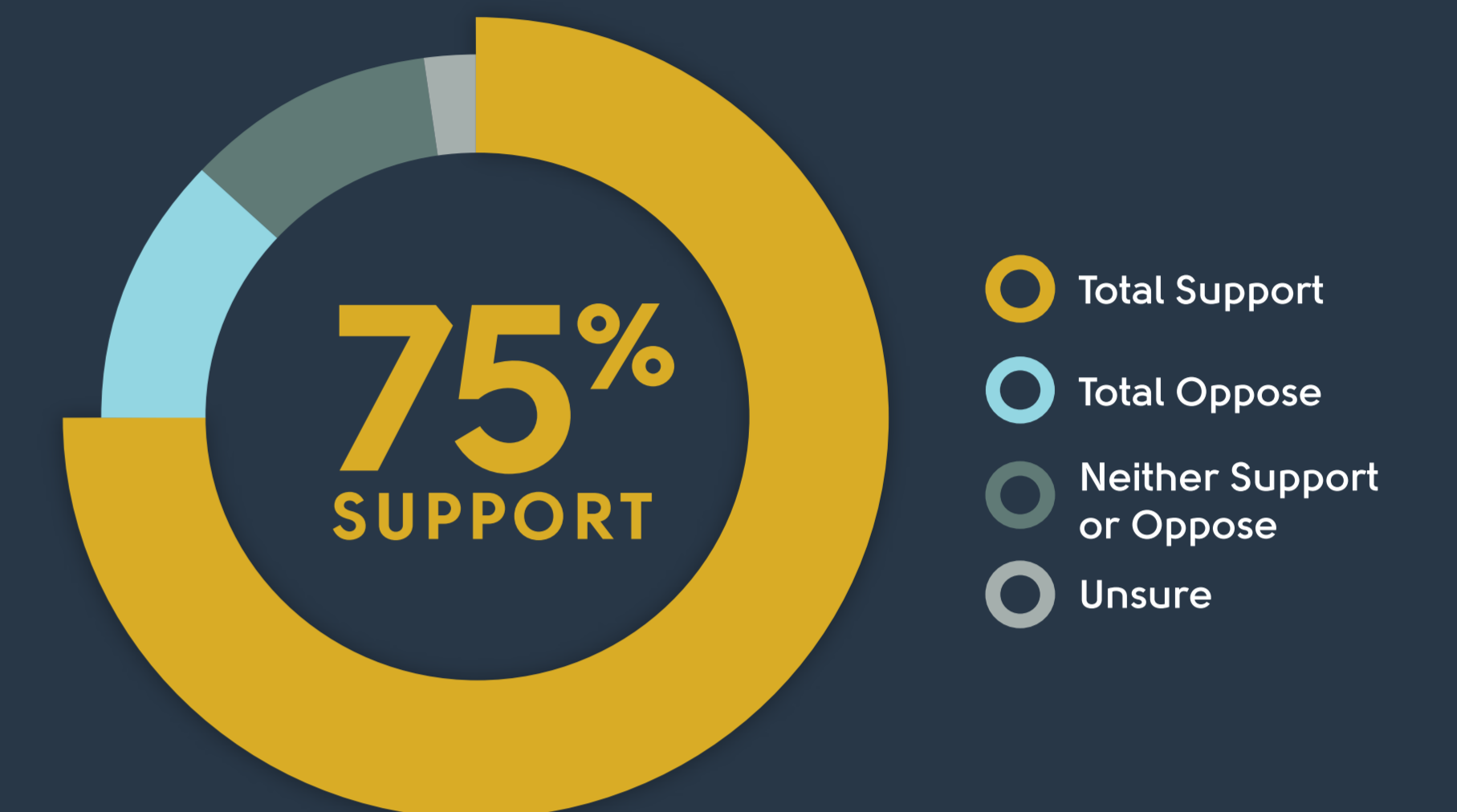
A couple of hundred replies would have made us happy, but we were overwhelmed by the response with so many of you lending a hand. This project has hit a chord.

We have highlighted the key findings of the Shoreline Public Survey. To download the full report visit www.ShorelineRedlands.com.au/survey/.

Cheers,



Greg Bell & Adam Souter

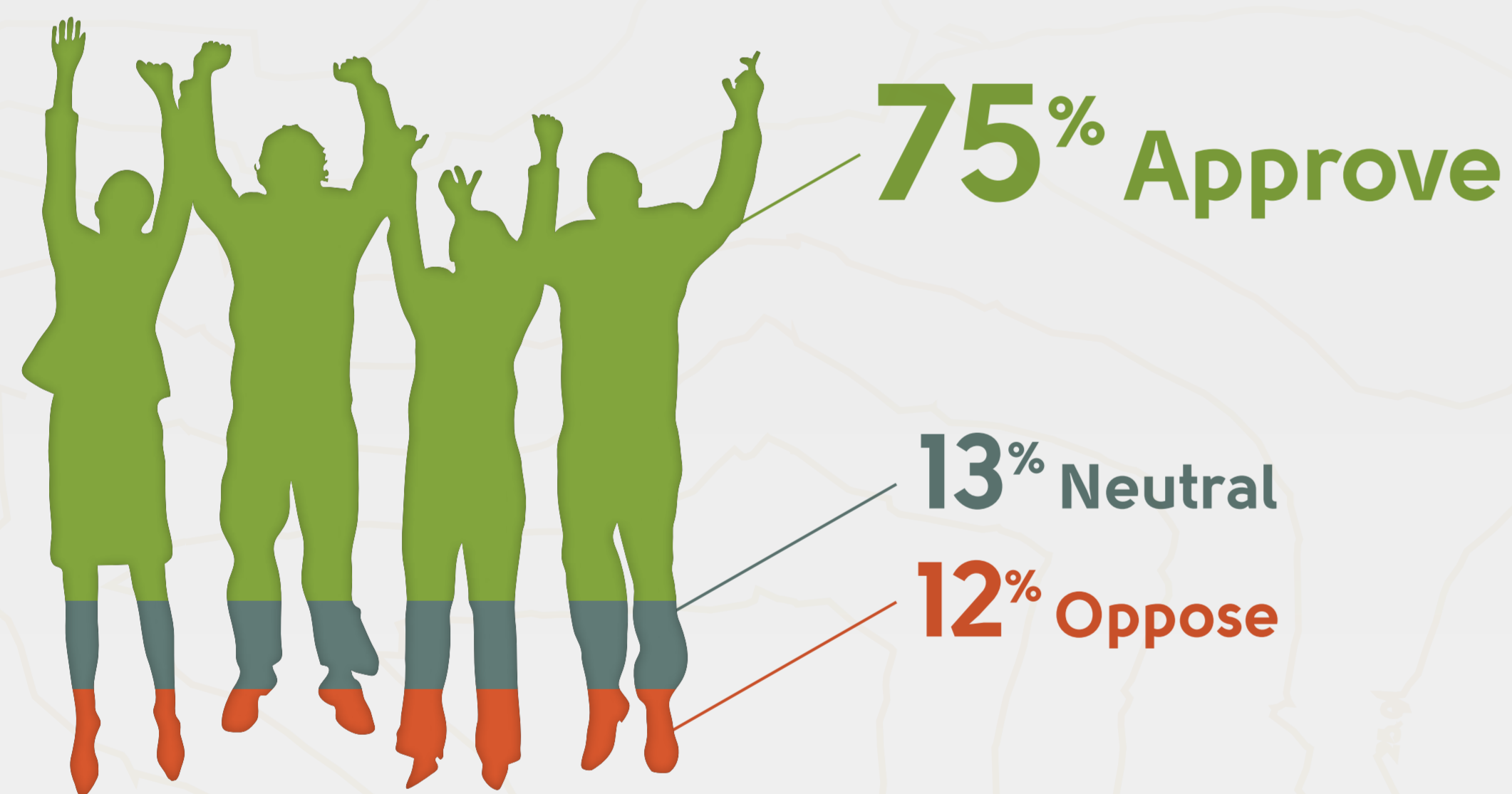


Key Findings

1

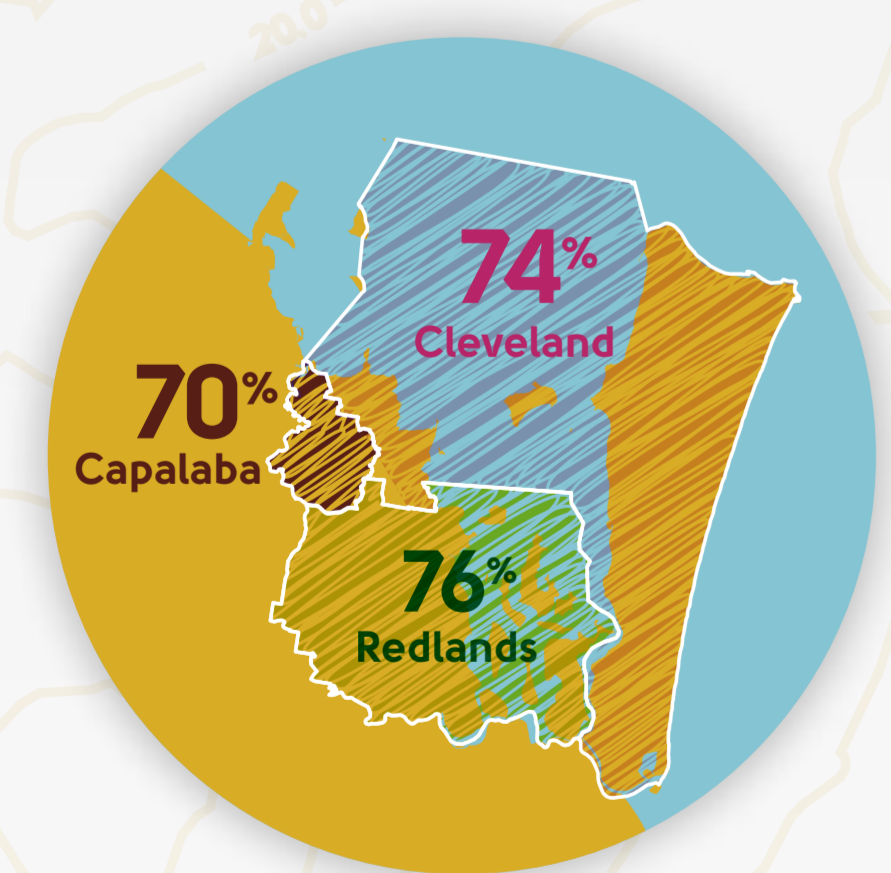
Redlands residents support the Shoreline proposal

When asked do you support or oppose the use of the site as an urban village:



- Those who approved of the Shoreline concepts wanted to see active open spaces, better infrastructure and family facilities.
- Those who were opposed tended to be older (over 50) and to live on larger allotments. They were more concerned with conservation issues.

Support by State Electorate is consistent

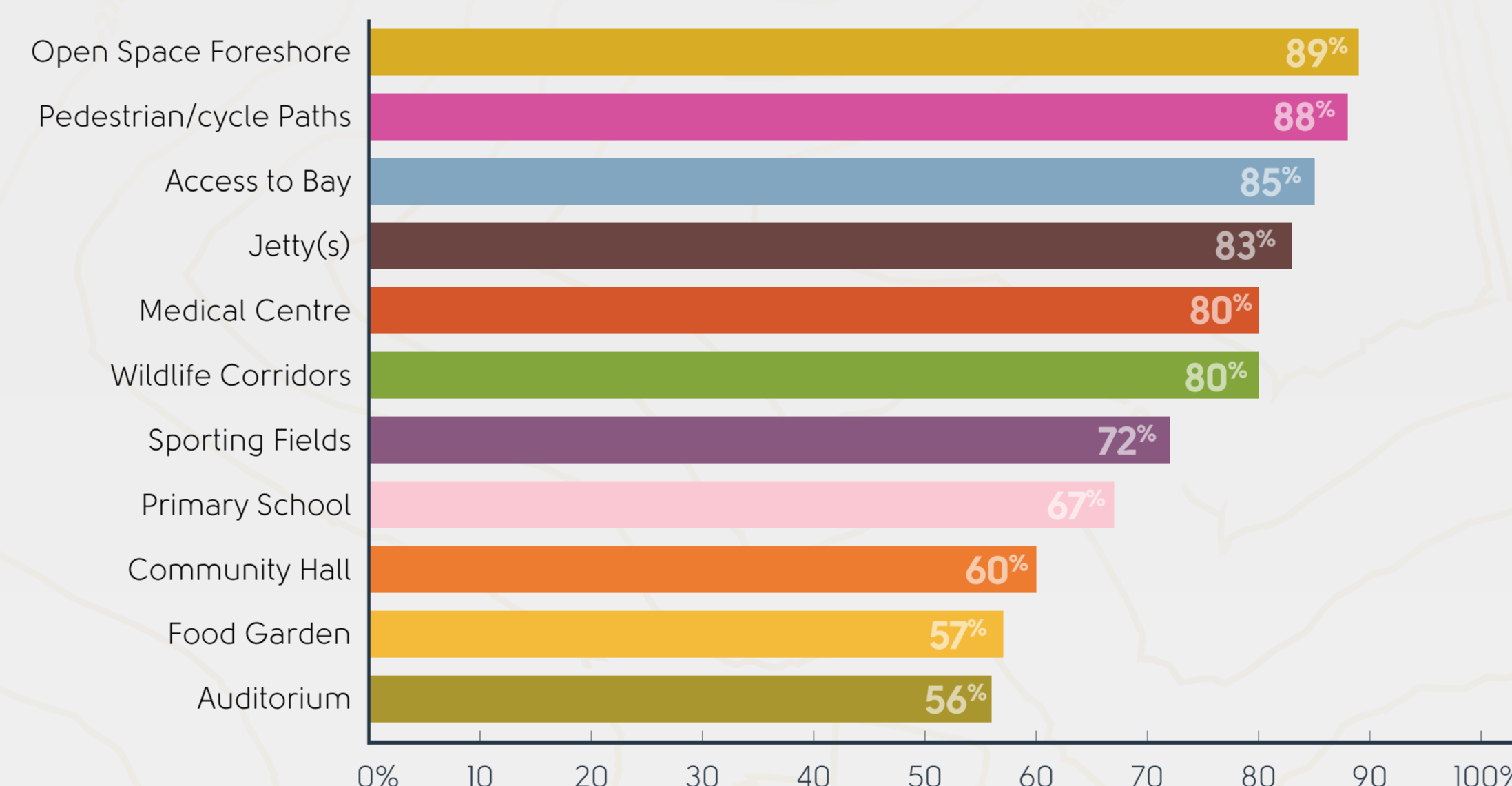


- Highest approval was 76% in Redlands state electorate and lowest approval was 70% in Capalaba state electorate.

2

Shoreline should showcase the bay

How you rated features on our proposal plan



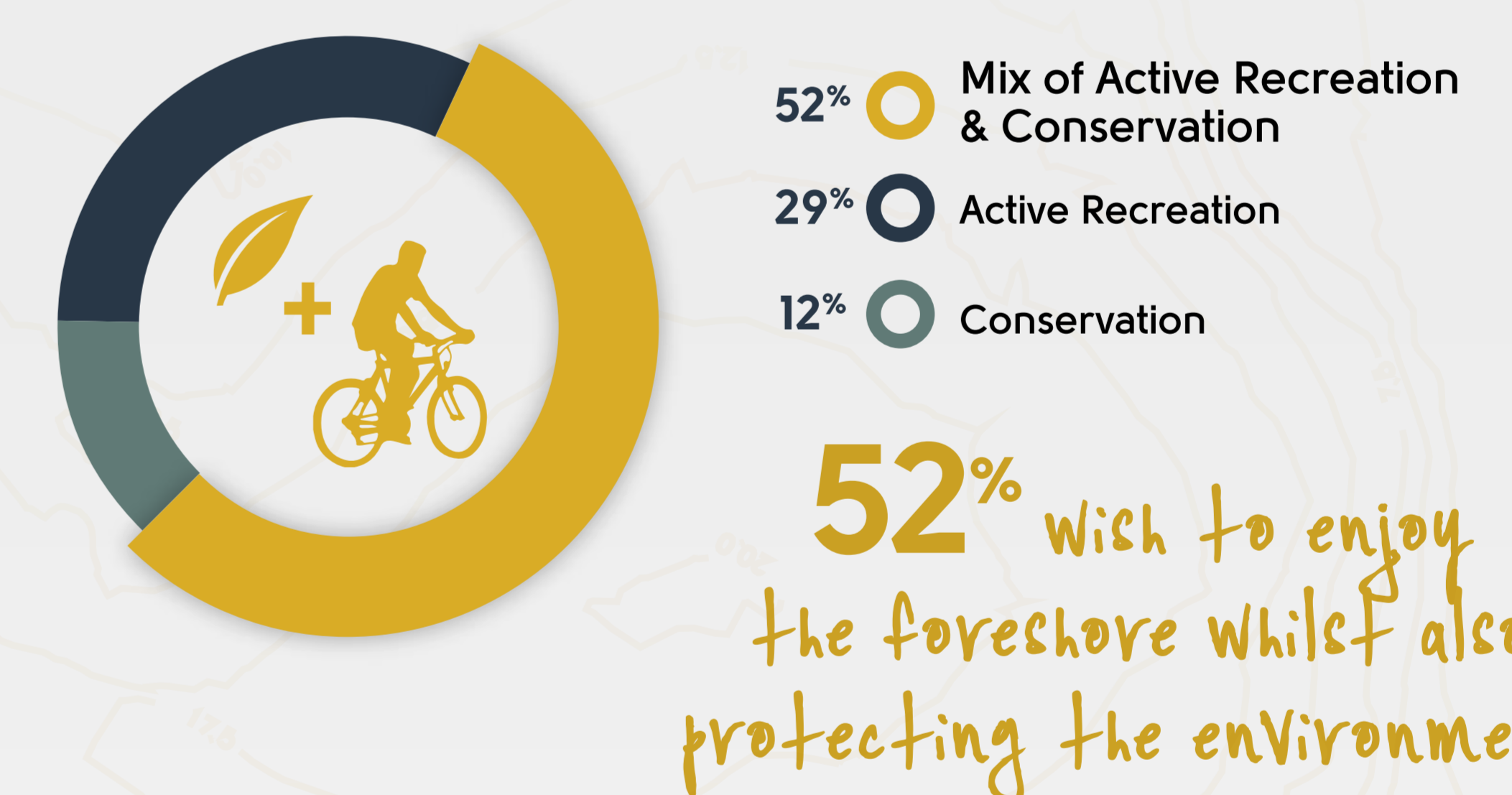
You told us Redlands is about the bay. You want better use of the foreshore with features like the sand beaches and water parks in Wynnum, Redcliffe and Brisbane's South Bank.



3

We want to enjoy the waterfront – however people and nature can mix

What do you prefer the foreshore area to be?



Residents were keen to see a mixture of active recreational uses of the foreshore, like walking and cycling tracks, picnic areas, jetties, and playing fields, rather than just conservation areas.



Public Survey Results

Shoreline

a new community by the Bay

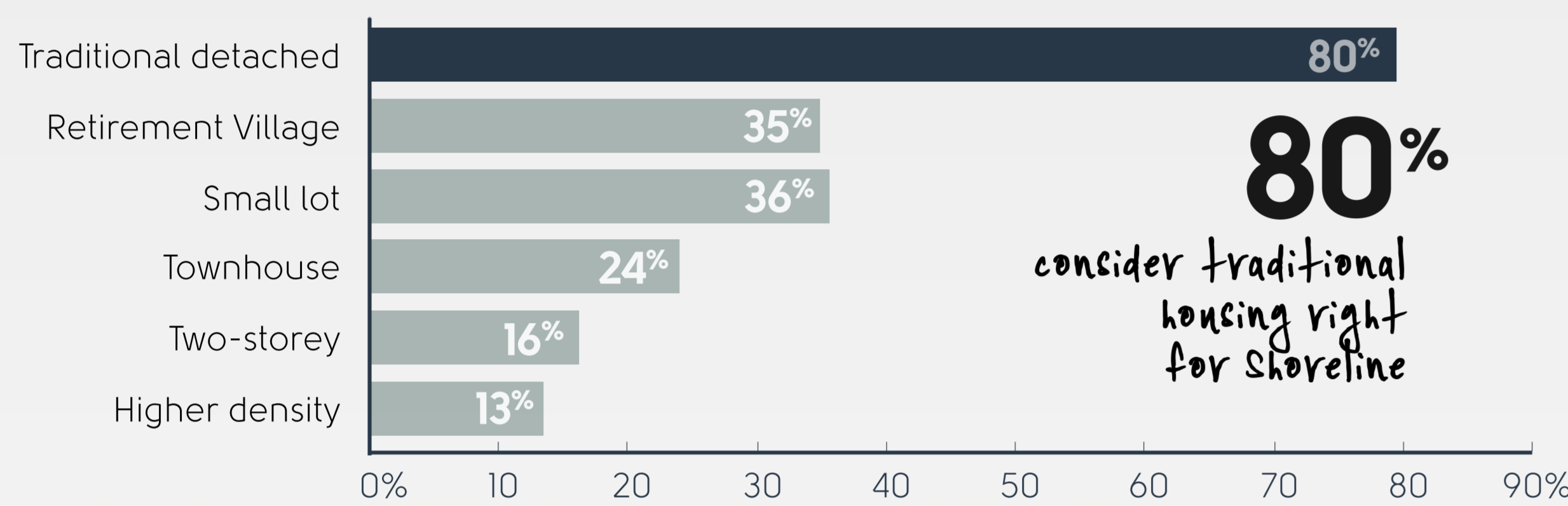
Key Findings

4

Shoreline must be a place for community values

Residents like the bay and the open space, and also the friendly community in Redlands. That means local neighbourhoods where children can play safely, large enough to support necessary facilities, but small enough to be a village.

Desirability of housing options

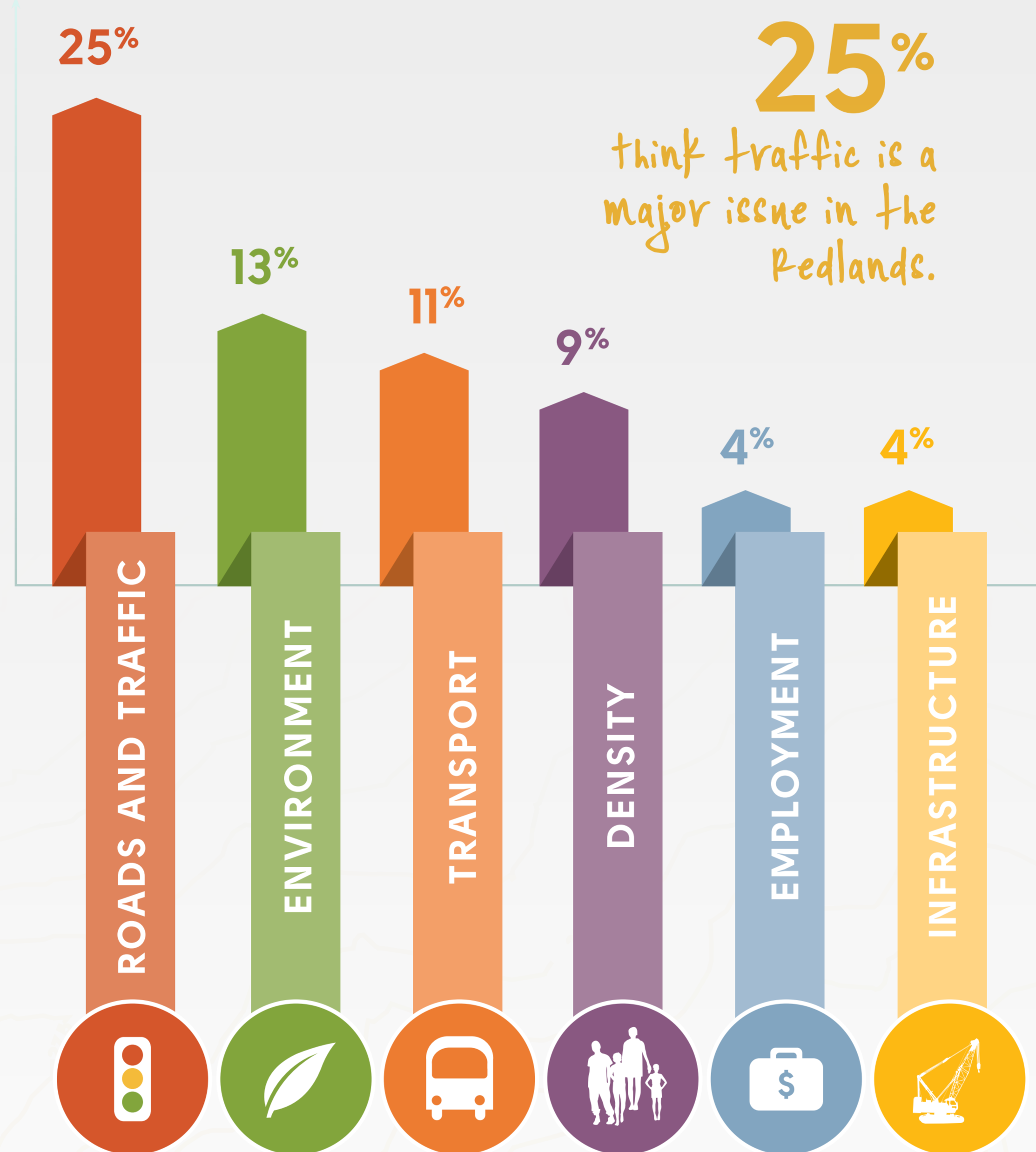


5

Transport has to be addressed

Suggested issues to be addressed

Traffic and transport are the stand out issues for Redlanders.



6

Your suggestions

Redlands Residents love the bay, the space, community, being close to facilities and at the same time away from hustle and bustle, and having nature right at their doorstep.

What additional features should be included in Shoreline?

1. Public transport
2. Beach/Water park
3. Conservations space
4. Boat ramp/marina
5. High school
6. Dining
7. Roads
8. Swimming pool
9. Dog park

We love Redlands

Some words you used to describe living in the Redlands.



Your Feedback

What you like about Redlands

"The lifestyle that you can still live and work near the water at an affordable price." Dave, Victoria Point

"I like living by the sea, our sea view of the islands and the casual village atmosphere of Redland Bay. Within one hour of Redlands you can be at quiet islands, surf beaches, rainforest and the city." Linda, Redland Bay

What you dislike about Redlands

"Lack of public transport, work opportunities and quality foreshore parks." Xavier, Redland Bay

Facilities

"I think an area; an entertainment type place like Raby Bay Marina would be great, be great at the Weinam Creek Marina too. There needs to be kids parks and BBQ areas, exercise tracks and equipment, gym and day spa, cafe and restaurants, maybe another RSL for the oldies too plus some sort of business/shopping precinct to offer local jobs and free car parking." Jarrod, Redland Bay

Other comments

"Development of more residential property in the Redlands is essential to ensure that people who grew up in the area do not have to move away to find housing. A variety in accommodation density types is desirable to support this." Shane, Birkdale

"I would love to see the blend of wildlife conservation and open spaces done properly. Also that housing is sustainable and well thought out in the long term." Fleur, Wellington Point

"It's about time there was some positive development in the region to attract more visitors as well as residents. It can only benefit the local economy." Vanessa, Cleveland

"Finally a developer who understands and cares about the surrounding environment. The Redlands is a place where I grew up and now my kids will call it home. We must design and think of the next generation and also include retiree's for when I retire there." John, Redland Bay

"Thank you for the opportunity to express my view." Graham, Redland Bay

Thanks for your feedback on the proposed Shoreline Development. Together we will build a better tomorrow for Redland City.

Stay in the loop!

Join in the conversation on our website, facebook or Twitter.

- @redlandsvillage
- www.facebook.com/ShorelineRedlands
- www.ShorelineRedlands.com.au
- 07 3821 1204

Public Consultation Results

Based on submissions to RCC October 2014

Measured on submissions to the Redland City Council, the Redlands community has **maintained its support for the Shoreline development**.

There were a total of 969 submissions to council, of which 851 were properly made. Of the properly made submissions **86% were in favour** and 13% against. This is a similar figure to our poll 2 years ago.

