



Office of the
Coordinator-General

Our ref: DGBN16/1644

15 MAR 2017

Mr Jonathon Dalton
Principal Advisor, Environment
RTA Yarwun Pty Ltd
PO Box 1479
GLADSTONE QLD 4680

Email: jonathon.dalton@riotinto.com

Dear Mr Dalton

APC2016/004 – Change application for an SDA approval for a material change of use for Waste Management (extraction of clay and rock material) in the Gladstone State Development Area

I refer to your change application for an SDA approval (MCU2014/007) for a material change of use for Waste Management (extraction of clay and rock material) in the Gladstone State Development Area made with the Coordinator-General and deemed properly made on 27 January 2017.

In accordance with section 84E and 84F of the *State Development and Public Works Organisation Act 1971*, I have decided to approve all of your application with conditions.

Please find enclosed the SDA approval for your reference.

If you require any further information, please contact Ms Leah Parker, Project Officer, State Development Areas Division, Office of the Coordinator-General, on 3452 7566 or sdainfo@coordinatorgeneral.qld.gov.au who will be pleased to assist.

Yours sincerely

Barry Broe
Coordinator-General

Enc.

1 William Street
PO Box 15517 City East
Queensland 4002 Australia
Telephone +61 7 3452 7100
www.statedevelopment.qld.gov.au
ABN 29 230 178 530

Decision notice

Application details:

Application type	Change application for an SDA approval for a material change of use for Waste Management (extraction of clay and rock material)
Reference #	APC2016/004
Proponent	RTA Yarwun Pty Ltd Jonathon Dalton PO Box 1479 GLADSTONE QLD 4680
Land subject of the SDA application	Lot 1 on SP144430 Lot 7 on SP228453
State development area	Gladstone State Development Area
Decision date	15 March 2017
Previous approvals to which this decision relates	MCU2014/007

Decision details:

In accordance with section 84E and 84F of the *State Development and Public Works Organisation Act 1971*, the Coordinator-General has decided to **approve with conditions** all of the above change application for an SDA approval for a material change of use for Waste Management (extraction of clay and rock material).

This SDA approval supersedes all previous approvals, including previous conditions.



Barry Broe
Coordinator-General

Conditions

Condition 1 – Approved use

Carry out the approved use generally in accordance with the approved documents as referenced in the table below, except insofar as modified by any of the conditions of this approval.

Title	Prepared by	Document No.	Revision No.	Date
Site Location Plan	Red Earth Engineering	J16038-SK01	B	9 September 2016

Timing – at all times

Condition 2 – Commencement of use

Notify the Coordinator-General, in writing, of the date of commencement of the use.

Timing – within 30 business days of commencement of the use

Condition 3 – Permissible activities

The following activities are permissible through this approval:

- a) extraction of clay and rock material from Lot 7 on SP228453
- b) stockpiling of clay and rock material on Lot 7 on SP228453
- c) sorting of clay and rock material on Lot 7 on SP228453
- d) construction of internal haul routes from Lot 7 on SP228453 to Lot 1 on SP144430
- e) haulage of clay and rock material from Lot 7 on SP228453 to Lot 1 on SP144430.

No other uses or activities are permitted, without approval from the Coordinator-General. This approval does not authorise any receiving and storing of regulated waste on Lot 7 on SP228453.

Note: The material extracted from Lot 7 on SP228453 is not to be resold.

Timing – ongoing

Condition 4 – Inspection

Permit the Coordinator-General, or any person authorised by the Coordinator-General, to inspect each aspect of the use to ensure compliance with the approval and associated conditions.

Timing – ongoing

Condition 5 – Limits of approval

Material extracted from Lot 7 on SP228453 shall not exceed 150,000 cubic metres per year.

Note: The extraction limit refers to the total weight of materials extracted in a 365 day period from the date of commencement of the use.

Timing – as indicated

Condition 6 – Site access

Access to Lot 7 on SP228453 must be from Lot 1 on SP144430, in accordance with the Site Location Plan, prepared by Red Earth Engineering, drawing no.J16038-SK01 Rev B dated 9/9/16.

Note: Access to Lot 7 on SP228453 is not permitted from the Gladstone – Mt Larcom Road. Access must be from the existing access point on Lot 1 on SP144430.

Timing – ongoing

Condition 7 – Haulage of clay and rock material

Haulage of extracted material from Lot 7 on SP228453 to Lot 1 on SP144430 must be via an internal haul route, in accordance with the Site Location Plan, prepared by Red Earth Engineering, drawing no.J16038-SK01 Rev B dated 9/9/16.

Note: Haulage of extracted material is not permitted on public roads. Construction of internal haul routes should avoid areas of MSES where possible.

Timing – ongoing

Prior to the construction of either internal haul route, undertake an assessment to determine whether the construction of the internal haul route will, or is likely to have, a significant residual impact (as defined by section 8 of the *Environmental Offsets Act 2014*) on matters of state environmental significance (MSES).

If construction of the internal haul route will, or is likely to have, a significant residual impact on MSES, a notice of election is to be prepared (in accordance with section 18 of the *Environmental Offsets Act 2014*) to address the extent of the environmental offset for the impact, and submitted to the Coordinator-General for approval prior to the commencement of construction of the internal haul route. Any environmental offset for the construction of the internal haul route's impact on MSES, is to be delivered in accordance with an agreed delivery arrangement (see section 19 of the *Environmental Offsets Act 2014*), approved by the Coordinator-General.

Timing – as indicated

Advice

Other approvals

This approval relates solely to the material change of use for Waste Management (extraction of clay and rock material) within the Gladstone State Development Area. All other approvals and/or permits required under local, state and/or commonwealth legislation must be obtained prior to the commencement of the use.

This approval does not restrict or inhibit the provisions of the *Aboriginal Cultural Heritage Act 2003*. The person carrying out the use must take all reasonable and practical measures to ensure the use does not harm Aboriginal Cultural Heritage and does not contravene the provisions of the *Aboriginal Cultural Heritage Act 2003*.

Department of Agriculture, Fisheries and Forestry

The spatial data layer *Queensland waterways for waterway barrier works* is to be used to map watercourses in relation to the use.

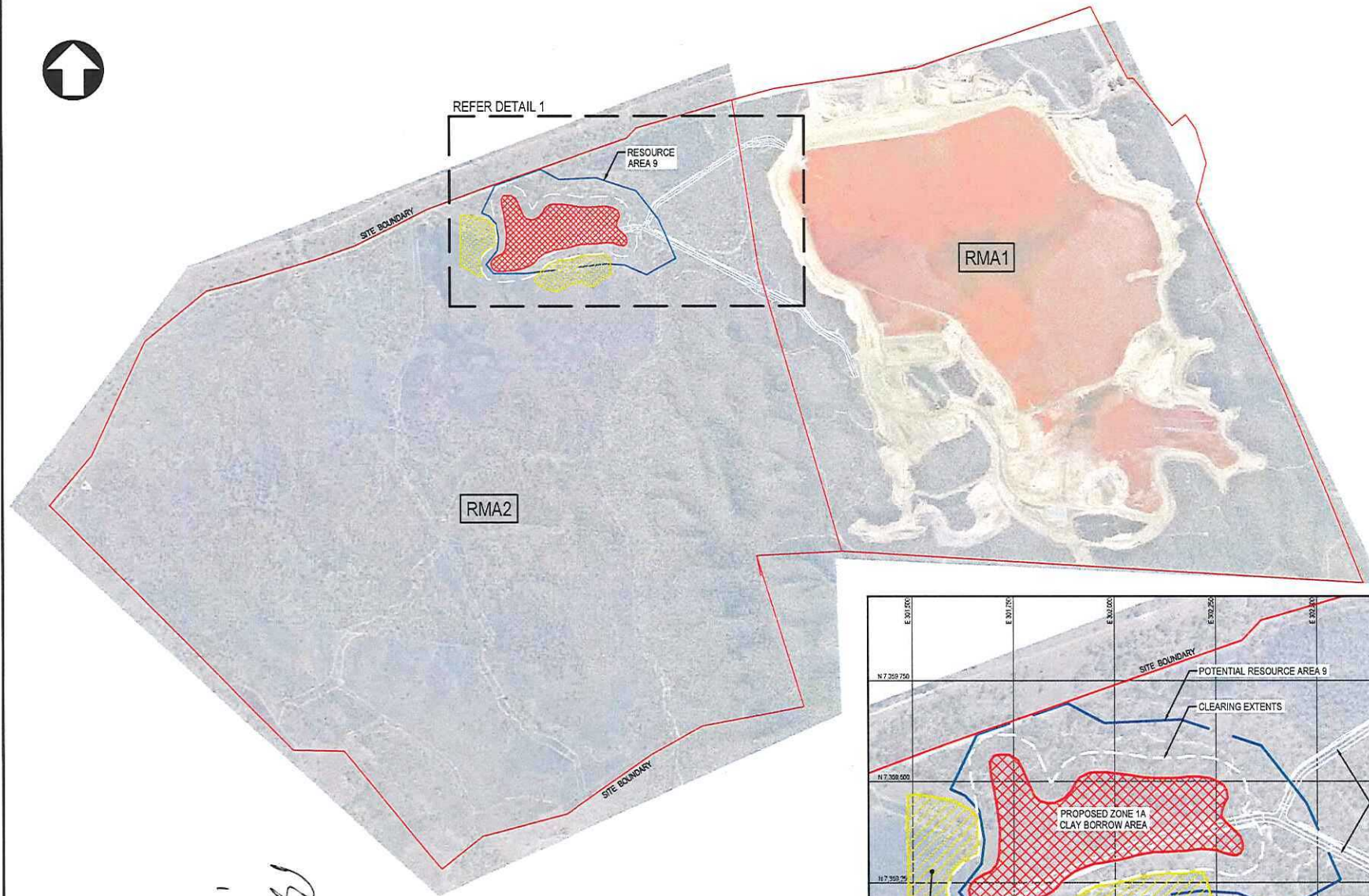
Consultation should occur with the Department of Agriculture, Fisheries and Forestry as to whether the waterway barrier works can be constructed and operated under the Department of Agriculture, Fisheries and Forestry's *Guidelines for the self-assessable codes for waterway barrier works*. The self-assessable codes can be retrieved from <http://www.daff.qld.gov.au>.

If the works cannot be conducted under the self-assessable codes, detailed design specifications are to be prepared and lodged to the State Assessment and Referral Agency (Department of State Development, Infrastructure and Planning) for approval.

Department of Natural Resources and Mines

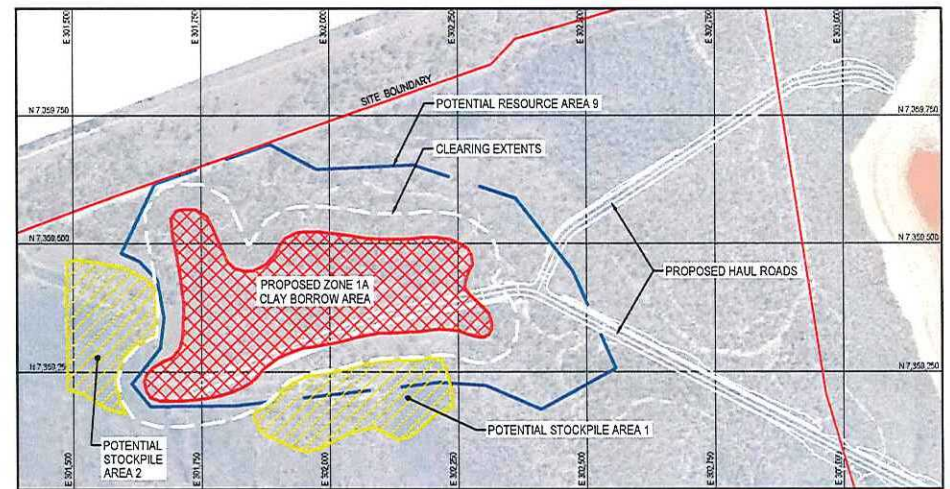
Any works to take overland flow water must be constructed in accordance with the Department of Natural Resources and Mines' *Code for self-assessable development for taking overland flow water to satisfy the requirements of an environmental authority or a development permit for carrying out an environmentally relevant activity*. The code can be retrieved from <http://www.dnrm.qld.gov.au>.

Should surface water be required for construction of the use, a water permit is required under the *Water Act 2000*.



15/3
Rae

SITE PLAN
SCALE 1:12,000



DETAIL 1
SCALE 1:10,000

PRELIMINARY
NOT FOR CONSTRUCTION

Revision	Date	Revision Description	Drawn	Design	Checked	Approved
B	09/09/16	MINOR AMENDMENTS	BE	GS	GS	SJ
A	01/09/16	ISSUED FOR INFORMATION	BE	GS	GS	SJ

Client
Rio Tinto

Scale
NOT TO SCALE
Datum



RED EARTH ENGINEERING
9 / 541 Boundary Street
Spring Hill QLD 4000
admin@redearthengineering.com.au
www.redearthengineering.com.au

Drawn	B ENRIGHT	Date	SEPT 2016
Designed	G SUTER	Date	SEPT 2016
Checked	G SUTER	Date	SEPT 2016
Approved	S JACKSON	Date	SEPT 2016

Project	RMA2 BORROW PIT INVESTIGATION - AREA 9		
Title	SITE LOCATION PLAN		
Project No.	A3	J16038	J16038-SK01
Revision	B		