

# KUR-WORLD MEDICAL RETREAT



LUXURIOUS RECOVERY



TRANQUIL SURROUNDS



INTEGRATED LANDSCAPE



NATURAL HEALING

MEDICINAL HERB GARDEN

MEDITATION POND

MEDICINAL HERB GARDEN

INTERNAL COURTYARDS

PORT COCHERE / RECEPTION



## MEDICAL RETREAT

The Medical Retreat will provide the rejuvenation, health and wellbeing focus of the KUR-World vision, including:

- A clinic providing treatments for patients with chronic illnesses
- Facial and cosmetic treatments
- Body and health checks
- Accommodation for 70 guests in luxury medical suites
- A bioresearch facility

Opportunities for traditional remedies are combined with the latest western medicine in a holistic approach to healing the body, mind and spirit.



## ARCHITECTURAL STYLING

- Clean and private, embracing the natural surrounds.
- Sound of flowing water.
- Modern and hi-tech.
- Serene and peaceful.



## HERB GARDEN

The origins of Chinese herbal medicine in China can be traced back at least 5000 years, making it one of the oldest and most long-standing health care systems in the world.

In this garden Chinese medicinal herbs used in traditional Chinese medicine are grown and harvested safely, sustainably and with integrity.



# KUR-WORLD FARM THEME PARK, EQUESTRIAN CENTRE AND LIFESTYLE VILLAS



EQUESTRIAN CENTRE



OUTDOOR TRAINING YARD



FREE ROAMING HORSES



FARMSTAY

## FARM THEME PARK

Spread over 12 hectares, around a dam, the Farm Theme Park provides another KUR-World experience and accommodation style. Life on a farm with its own cattle yard and horse stables is a fantasy for kids of all ages, and this precinct sets out to make that fantasy a reality. Here, you can enjoy wandering the paddocks, getting close to the farm animals, or simply being woken by the birds as the farm comes to life every morning.

## EQUESTRIAN CENTRE

The KUR-World Equestrian Centre will provide a different focus for skilled instructors and novices alike, and a venue for functions and demonstrations, including:

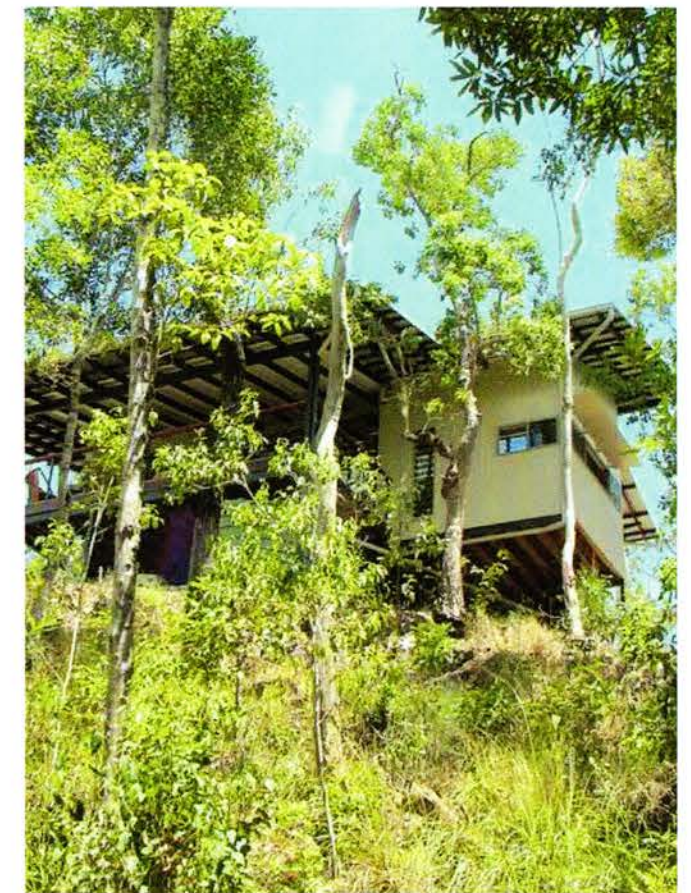
- Equestrian presentation areas
- Covered equestrian arena
- Stables
- Training and riding yards

LIFESTYLE VILLAS

THEME PARK ACCOMMODATION

FARM THEME PARK AND EQUESTRIAN CENTRE

OUTDOOR TRAINING YARD



LIFESTYLE LOTS

## RELAXED RURAL LIVING

Recognising the special bond that horse lovers of all ages enjoy with their animals, KUR-World is the perfect environment to experience a trek through the forest where both horses and riders will appreciate the peaceful, rural surrounds.

## RESIDENTIAL LIFESTYLE VILLAS

These residential villa lots will further diversify the accommodation options, providing the ability to own your own piece of KUR-World. Lots will range in size from 600m<sup>2</sup> to 2,000m<sup>2</sup>.

## ARCHITECTURAL STYLING

- The feel of outback Australia with its simple, raw design will be given a new, modern flavour.
- The sense of nature - the sights, the sounds and smells, and importantly, the breezes will be embraced with passive design and large external spaces.

# KUR-WORLD GOLF CLUB AND PREMIUM VILLAS



ICONIC ARCHITECTURE

© Xia Zhi, Wang Quan



270° VIEWS

© Hiroyuki Hirai



## PREMIUM RESIDENTIAL VILLAS

Premium residential villas will surround and overlook the golf course and riparian buffer. Each will have a private driveway access and enjoy the full services of the 5-star resort.

## THE CLUBHOUSE

The Club is a centrepiece country clubhouse in the heart of KUR-World offering a suite of attractions:

- Golf
- Tennis
- Spa
- Restaurant/19th hole

The Club will have panoramic views across the golf course, forests and mountains beyond, offering the guests and residents of KUR-World a unique dining location.

## ARCHITECTURAL STYLING

The design will stay true to the KUR-World vision of linking with nature through the use of large glazed walls, oversized tropical eaves, and opulent local timbers. The clubhouse will take its style cues from the endemic trees and mountain forms.



# KUR-WORLD RAINFOREST EDUCATION CENTRE AND BOARDING CABINS



MODERN FACILITIES



BOARDING ACCOMMODATION



TEACHING/CAMPUS AREAS



LABORATORY

DINING/LECTURE SPACES

SECONDARY LABORATORIES

CENTRAL LABORATORIES

STUDENT BOARDING CABINS



## EDUCATION CENTRE

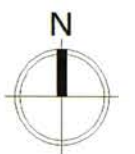
KUR-World's Rainforest Education Centre will be a world class research facility for students and school groups. The rainforest focus will extend from the hands-on research experience, to the embodiment of the tropical rainforest in the built form.

Interactions between the setting and its occupants will underpin KUR-World's Education Centre achievements. The Centre will have low energy consumption and maintenance by incorporating passive and general design principles, especially suitable for the tropics, which also serve as a learning tool and part of the overall educational experience.

The boarding cabins will be designed to house short term visitors. With room for groups of up to 300 guests, the accommodation will comprise 14 cabins set in natural tropical surrounds, communal kitchens and function spaces.

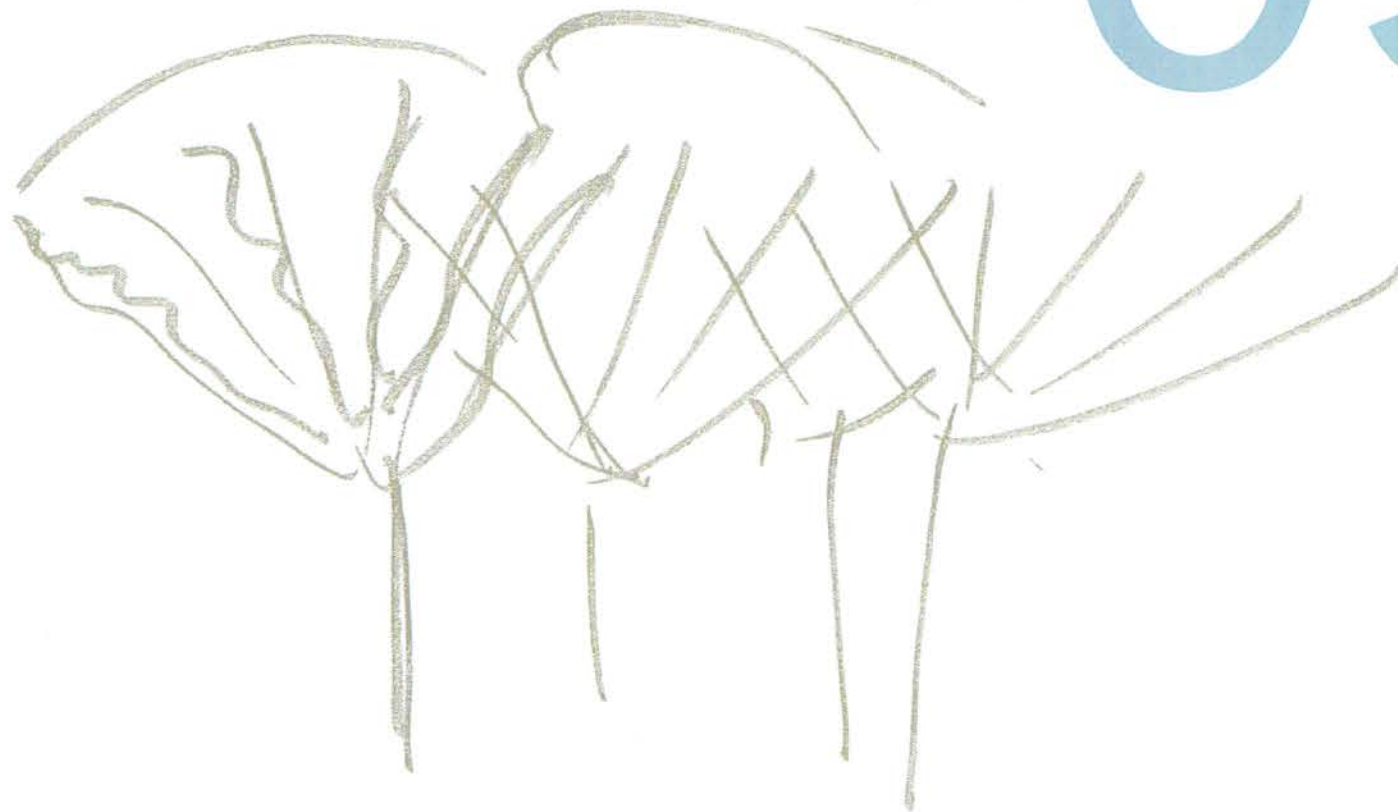
Features include:

- Flexible living spaces combining dining and multi-use lecture spaces
- 8 dedicated labs, centrally located with internal and external features
- A series of interconnected gathering spaces – covered breezeways, terraces and a tropical garden – offering varied environments for social interaction
- Various accommodation options up to 300 students, staff and researchers with associated amenities.



# 05

## ACCOMMODATION TYPES

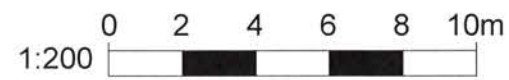


# ACCOMMODATION TYPES

## PREMIUM VILLAS (GOLF COURSE)



Internal 169m<sup>2</sup>  
 Roofed Patio 19m<sup>2</sup>  
 Landscape 113.5m<sup>2</sup>  
 Outdoor area 102.5m<sup>2</sup>  
 Total 404m<sup>2</sup>



## KUR-WORLD CAMPUS VILLAS



Internal 34m<sup>2</sup>  
 Balcony 6m<sup>2</sup>  
 Total 40m<sup>2</sup>

Overall Footprint 513m<sup>2</sup>

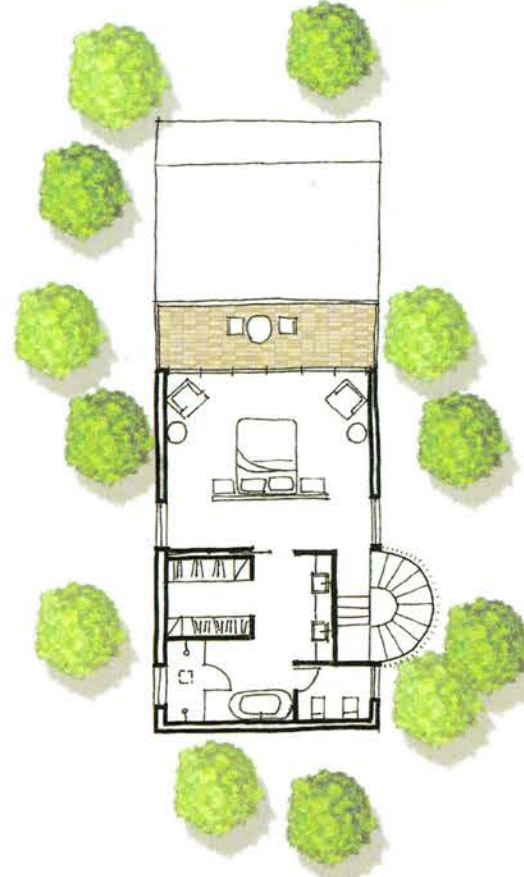
# VILLA TYPES

PREMIUM VILLAS (TREEHOUSE)



Internal 39.6m<sup>2</sup>  
 Roofed Patio 10.2m<sup>2</sup>  
 Outdoor areas 32m<sup>2</sup>  
 Landscape 13.5m<sup>2</sup>  
 Total 95.3m<sup>2</sup>

PREMIUM VILLAS (2 STOREY TREE HOUSE)



LEVEL 1



GROUND

Internal 98.5m<sup>2</sup>  
 Balcony 9.4m<sup>2</sup>  
 Outdoor areas 30m<sup>2</sup>  
 Landscape 5.5m<sup>2</sup>  
 Total 143.4m<sup>2</sup>

5-STAR RESORT VILLA



Internal 76.5m<sup>2</sup>  
 Roofed Patio 16m<sup>2</sup>  
 Landscape 38m<sup>2</sup>  
 Outdoor area 39m<sup>2</sup>  
 Total 169.5m<sup>2</sup>

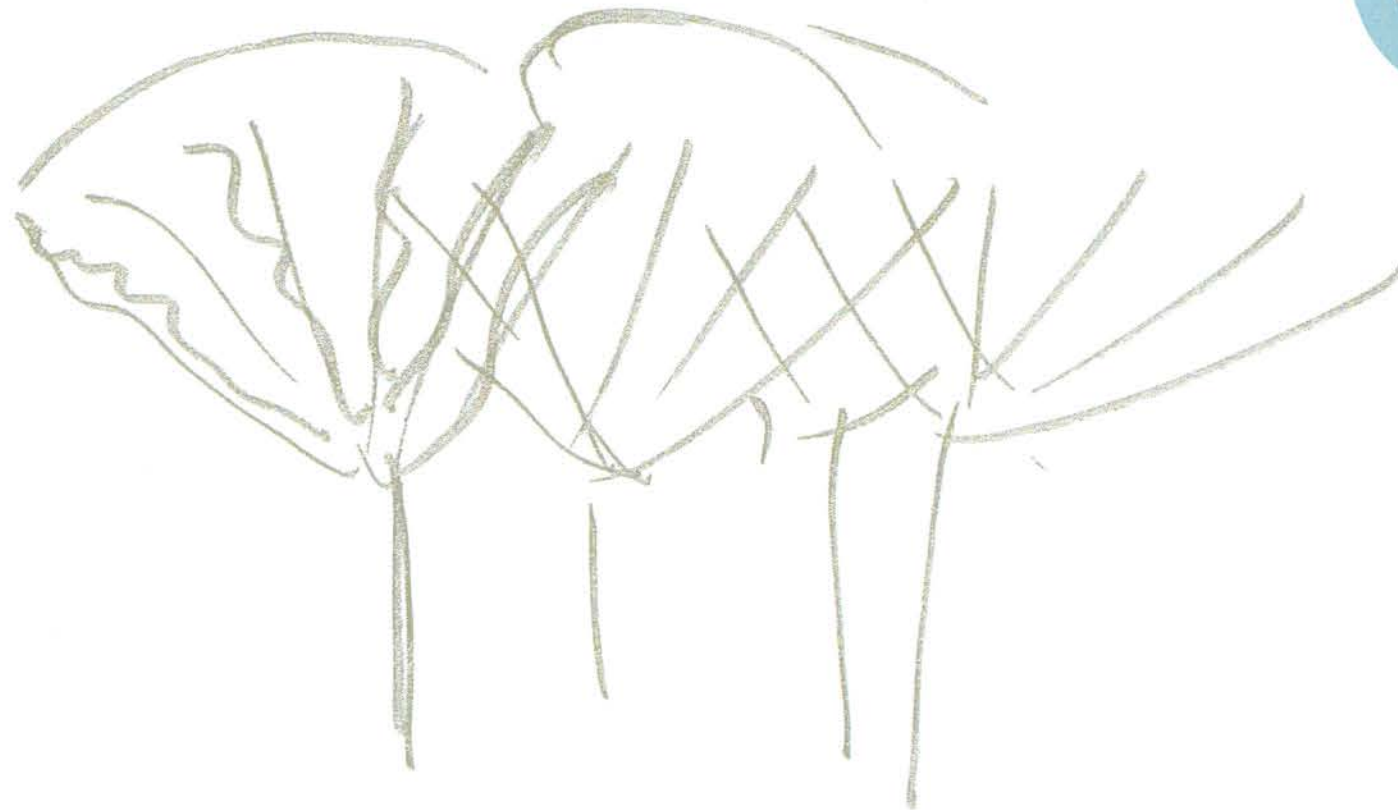
KUR-WORLD HEALTH RETREAT  
 PRIVATE REJUVENATION SUITE



Internal with aircon 34.6m<sup>2</sup>  
 Internal 37.8m<sup>2</sup>  
 Landscape 19.9m<sup>2</sup>  
 Total 92.3m<sup>2</sup>



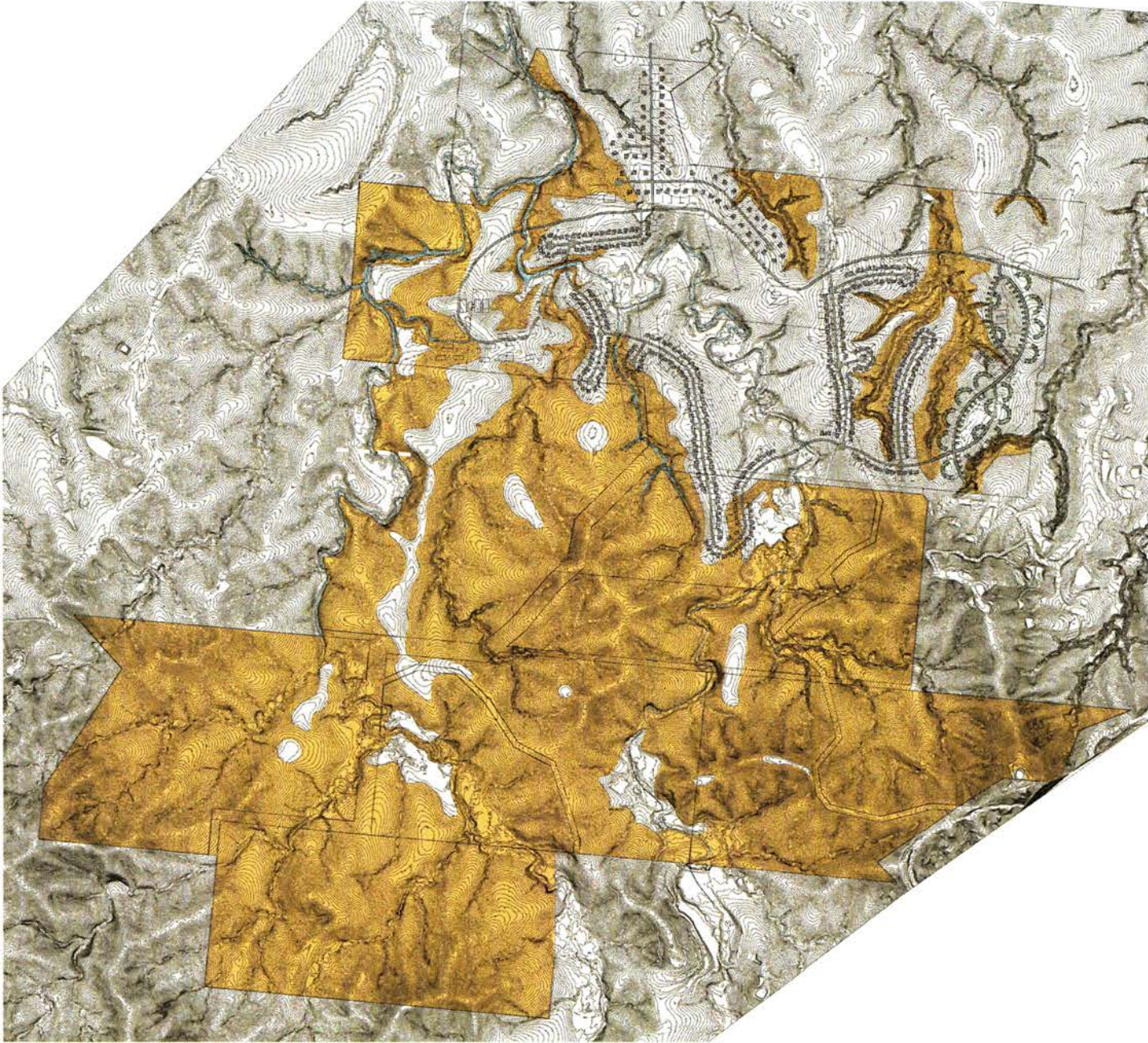
# 06 APPENDICES





# TOPOGRAPHICAL CONSTRAINTS

■ AREAS OF STEEP GRADE



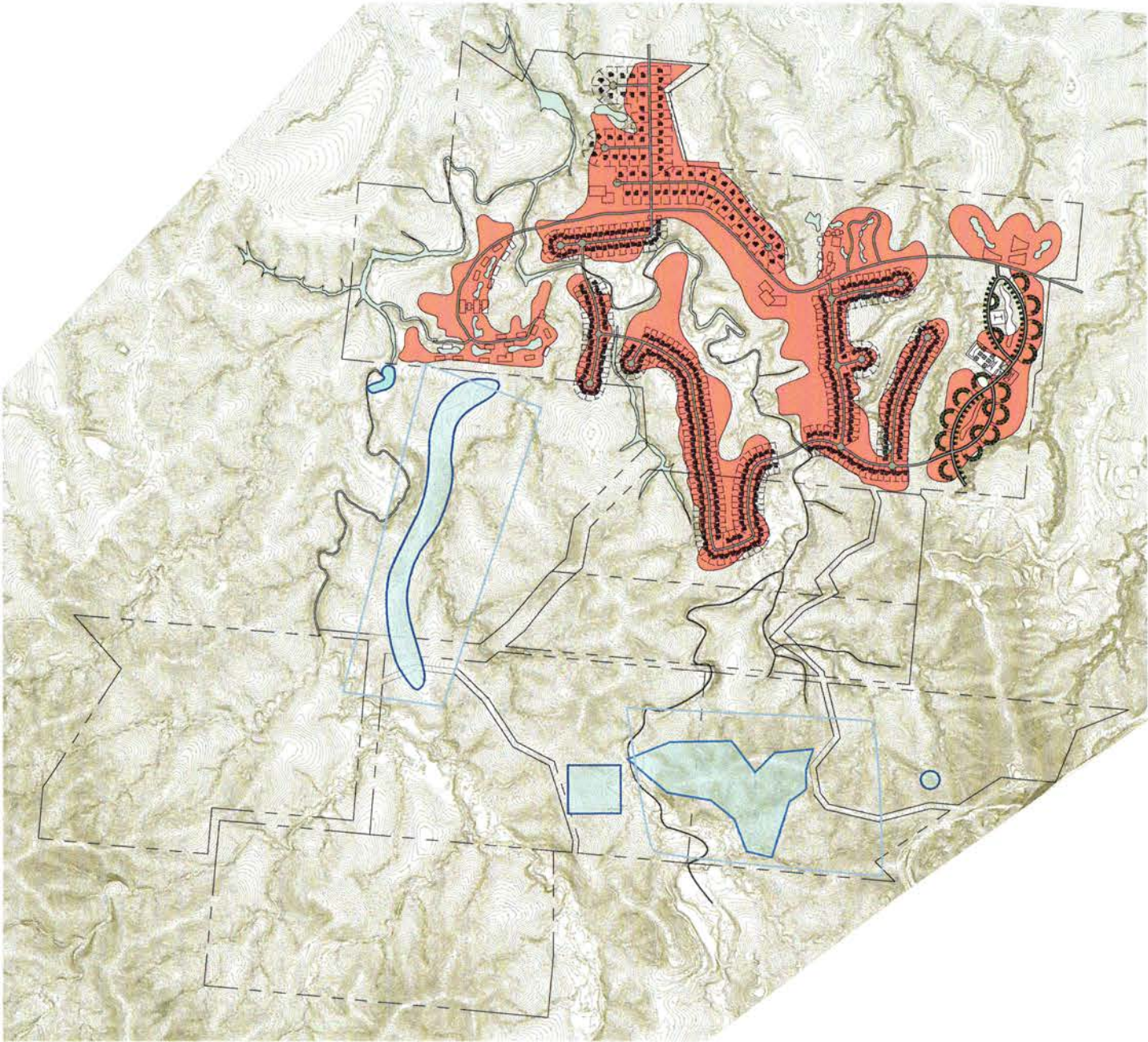
1:20000

# OVERALL CONCEPT DEVELOPMENT MAP

- NORTH**
- STRUCTURED
  - LUXURIOUS
  - RELAXING
  - REHABILITATING

- SOUTH**
- WILD
  - ADVENTUROUS
  - CHALLENGING
  - PRISTINE

- CLEARED
- LIMITED DEVELOPMENT



1:20000

LOT LOCATIONS

LIFESTYLE VILLAS

GOLF COURSE VILLAS



1:10000