



Path: L:\Consult\GIS\GIS\_WRM\Monarc\CribPt\toPakenham\ListedFloraFauna\_RevB.mxd

APA Transmission Pty Limited - 31-02984.00

### Crib Point Pakenham Pipeline Project Listed Flora and Fauna Page 13 of 24

WORK REQUEST NUMBER: 31-02984.00

DATA SOURCES:  
Service Layer Credits: Copyright © 2018 Garmin  
Source: Esri, DigitalGlobe, GeoEye, Earthstar Geographics, CNES/Airbus DS, USDA, USGS, AeroGRID, IGN, and the GIS User Community

| LEGEND |                       |  |                          |  |   |
|--------|-----------------------|--|--------------------------|--|---|
|        | Kilometre Points      |  | Listed Fauna             |  | Water Course  |
|        | Large Scattered Trees |  | Listed Avian Fauna       |  | Crib Point Pakenham Alignment                           |
|        | Small Scattered Trees |  | FFG Listed Aquatic Fauna |  | Construction Footprint                                  |
|        | Other Scattered Trees |  | Glossy Grass Skink       |  | Water Body  |
|        | Flora Survey Site     |  | Growing Grass Frog       |  | Endangered  |
|        | Fauna Survey Site     |  | Southern Brown Bandicoot |  | Vulnerable  |
|        |                       |  | Southern Toadlet         |  | Least Concern   |
|        |                       |  |                          |  | Planted   |
|        |                       |  |                          |  | EPBC Listed Subtropical and Temperate Coastal Saltmarsh |

LOCATION DIAGRAM

1:8,500

(A3) GDA 1994 MGA Zone 55

Monarc does not guarantee the accuracy or completeness of the map and does not make any warranty about the data. Monarc is not under any liability to the user for any loss or damage (including consequential loss or damage) which the user may suffer resulting from the use of this map.



APA Transmission Pty Limited - 31-02984.00

### Crib Point Pakenham Pipeline Project Listed Flora and Fauna Page 14 of 24

WORK REQUEST NUMBER: 31-02984.00  
 DATA SOURCES:  
 Service Layer Credits: Copyright © 2018 Garmin  
 Source: Esri, DigitalGlobe, GeoEye, Earthstar Geographics,  
 CNES/Airbus DS, USDA, USGS, AeroGRID, IGN, and the GIS User  
 Community

| LEGEND  |                                 |
|---|---------------------------------|
| ○ Kilometre Points  | Listed Fauna                    |
| ● Large Scattered Trees                                   | ● Listed Avian Fauna            |
| ● Small Scattered Trees                                   | ● FFG Listed Aquatic Fauna      |
| ● Other Scattered Trees                                   | ● Glossy Grass Skink            |
| ● Flora Survey Site                                       | ● Growling Grass Frog           |
| ● Fauna Survey Site                                       | ● Southern Brown Bandicoot      |
|   | ● Southern Toadlet              |
| — Water Course  | — Crib Point Pakenham Alignment |
| — Construction Footprint                                  | — Water Body                    |
| ■ Endangered  | ■ Vulnerable                    |
| ■ Least Concern   | ■ Planted                       |
| ■ EPBC Listed Subtropical and Temperate Coastal Saltmarsh |                                 |



Path: L:\Consult\GIS\GIS\_WRM\Monarc\CribPt\toPakenham\ListedFloraFauna\_RevB.mxd

Monarc does not guarantee the accuracy or completeness of the map and does not make any warranty about the data. Monarc is not under any liability to the user for any loss or damage (including consequential loss or damage) which the user may suffer resulting from the use of this map.



APA Transmission Pty Limited - 31-02984.00

### Crib Point Pakenham Pipeline Project Listed Flora and Fauna Page 15 of 24



WORK REQUEST NUMBER: 31-02984.00

DATA SOURCES:  
Service Layer Credits: Copyright © 2018 Garmin  
Source: Esri, DigitalGlobe, GeoEye, Earthstar Geographics, CNES/Airbus DS, USDA, USGS, AeroGRID, IGN, and the GIS User Community

| ISSUE DATE | AUTHOR | QA CHECK | APPROVED | MAP REV. | REVISION NOTE     |
|------------|--------|----------|----------|----------|-------------------|
| 04/09/2018 | AB     | JH       | MV       | B        | Issued for Review |
| 14/08/2018 | AB     | JH       | CC       | A        | Issued for Review |

**LEGEND**


- Kilometre Points
- Large Scattered Trees
- Small Scattered Trees
- Other Scattered Trees
- Flora Survey Site
- Fauna Survey Site
- Listed Fauna
- Listed Avian Fauna
- FFG Listed Aquatic Fauna
- Glossy Grass Skink
- Growling Grass Frog
- Southern Brown Bandicoot
- Southern Toadlet
- Water Course
- Crib Point Pakenham Alignment
- Construction Footprint
- Water Body
- Endangered
- Vulnerable
- Least Concern
- Planted
- EPBC Listed Subtropical and Temperate Coastal Saltmarsh

0 100 200  
Metres  
1:8,500

(A3) GDA 1994 MGA Zone 55

**LOCATION DIAGRAM**



Path: L:\Consult\GIS\GIS\_WRM\Monarc\CribPt\toPakenham\ListedFloraFauna\_RevB.mxd

Monarc does not guarantee the accuracy or completeness of the map and does not make any warranty about the data. Monarc is not under any liability to the user for any loss or damage (including consequential loss or damage) which the user may suffer resulting from the use of this map.



Path: L:\Consult\GIS\GIS\_WRM\Monarc\CribPt\toPakenham\ListedFloraFauna\_RevB.mxd

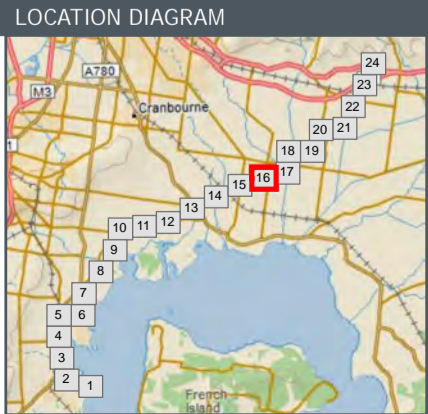
APA Transmission Pty Limited - 31-02984.00

### Crib Point Pakenham Pipeline Project Listed Flora and Fauna Page 16 of 24

WORK REQUEST NUMBER: 31-02984.00  
 DATA SOURCES:  
 Service Layer Credits: Copyright © 2018 Garmin  
 Source: Esri, DigitalGlobe, GeoEye, Earthstar Geographics,  
 CNES/Airbus DS, USDA, USGS, AeroGRID, IGN, and the GIS User  
 Community

| LEGEND  |                               |
|---|-------------------------------|
| Kilometre Points  | Listed Fauna                  |
| Large Scattered Trees                                   | Listed Avian Fauna            |
| Small Scattered Trees                                   | FFG Listed Aquatic Fauna      |
| Other Scattered Trees                                   | Glossy Grass Skink            |
| Flora Survey Site                                       | Growling Grass Frog           |
| Fauna Survey Site                                       | Southern Brown Bandicoot      |
|   | Southern Toadlet              |
| Water Course  | Crib Point Pakenham Alignment |
| Construction Footprint                                  | Water Body                    |
| Endangered  | Vulnerable                    |
| Least Concern   | Planted                       |
| EPBC Listed Subtropical and Temperate Coastal Saltmarsh |                               |

| ISSUE DATE | AUTHOR | QA CHECK | APPROVED | MAP REV. | REVISION NOTE     |
|------------|--------|----------|----------|----------|-------------------|
| 04/09/2018 | AB     | JH       | MV       | B        | Issued for Review |
| 14/08/2018 | AB     | JH       | CC       | A        | Issued for Review |



Monarc does not guarantee the accuracy or completeness of the map and does not make any warranty about the data.  
 Monarc is not under any liability to the user for any loss or damage (including consequential loss or damage) which the user may suffer resulting from the use of this map.



APA Transmission Pty Limited - 31-02984.00

### Crib Point Pakenham Pipeline Project Listed Flora and Fauna Page 17 of 24



WORK REQUEST NUMBER: 31-02984.00

DATA SOURCES:  
Service Layer Credits: Copyright © 2018 Garmin  
Source: Esri, DigitalGlobe, GeoEye, Earthstar Geographics, CNES/Airbus DS, USDA, USGS, AeroGRID, IGN, and the GIS User Community

| ISSUE DATE | AUTHOR | QA CHECK | APPROVED | MAP REV. | REVISION NOTE     |
|------------|--------|----------|----------|----------|-------------------|
| 04/09/2018 | AB     | JH       | MV       | B        | Issued for Review |
| 14/08/2018 | AB     | JH       | CC       | A        | Issued for Review |

**LEGEND**


- Kilometre Points
- Large Scattered Trees
- Small Scattered Trees
- Other Scattered Trees
- Flora Survey Site
- Fauna Survey Site
- Listed Fauna
- FFG Listed Aquatic Fauna
- Glossy Grass Skink
- Growing Grass Frog
- Southern Brown Bandicoot
- Southern Toadlet
- Water Course
- Crib Point Pakenham Alignment
- Construction Footprint
- Water Body
- Endangered
- Vulnerable
- Least Concern
- Planted
- EPBC Listed Subtropical and Temperate Coastal Saltmarsh

0 100 200  
Metres  
1:8,500

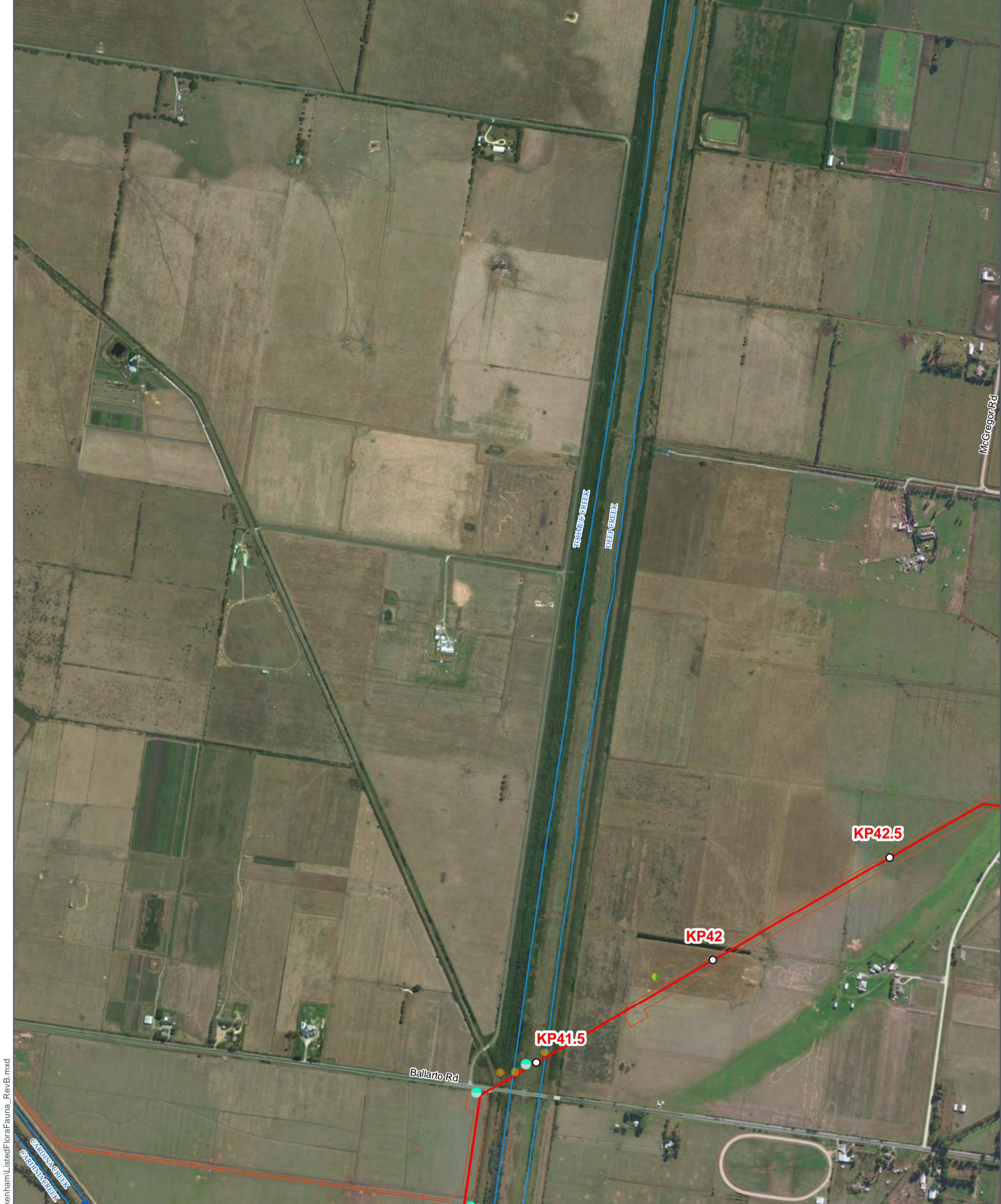
(A3) GDA 1994 MGA Zone 55

**LOCATION DIAGRAM**



Path: L:\Consult\GIS\GIS\_WRM\Monarc\CribPt\toPakenham\ListedFloraFauna\_RevB.mxd

Monarc does not guarantee the accuracy or completeness of the map and does not make any warranty about the data. Monarc is not under any liability to the user for any loss or damage (including consequential loss or damage) which the user may suffer resulting from the use of this map.



Path: L:\Consult\GIS\GIS\_WRM\Monarc\CribPt\ToPakenham\ListedFloraFauna\_RevB.mxd

APA Transmission Pty Limited - 31-02984.00

## Crib Point Pakenham Pipeline Project

### Listed Flora and Fauna

Page 18 of 24

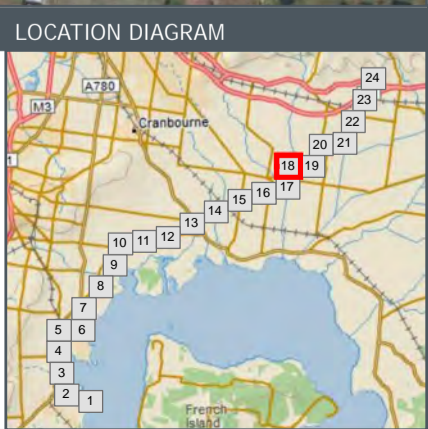
WORK REQUEST NUMBER: 31-02984.00

DATA SOURCES:  
 Service Layer Credits: Copyright © 2018 Garmin  
 Source: Esri, DigitalGlobe, GeoEye, Earthstar Geographics,  
 CNES/Airbus DS, USDA, USGS, AeroGRID, IGN, and the GIS User  
 Community

| Kilometre Points |                       | Listed Fauna |                          | Water Course |                               | Vegetation Patch |   |
|------------------|-----------------------|--------------|--------------------------|--------------|-------------------------------|------------------|---|
|                  | Kilometre Points      |              | Listed Avian Fauna       |              | Water Course                  |                  | Endangered  |
|                  | Large Scattered Trees |              | FFG Listed Aquatic Fauna |              | Crib Point Pakenham Alignment |                  | Vulnerable  |
|                  | Small Scattered Trees |              | Glossy Grass Skink       |              | Construction Footprint        |                  | Least Concern   |
|                  | Other Scattered Trees |              | Growing Grass Frog       |              | Water Body                    |                  | Planted   |
|                  | Flora Survey Site     |              | Southern Brown Bandicoot |              |                               |                  | EPBC Listed Subtropical and Temperate Coastal Saltmarsh |
|                  | Fauna Survey Site     |              | Southern Toadlet         |              |                               |                  |   |

| ISSUE DATE | AUTHOR | QA CHECK | APPROVED | MAP REV. | REVISION NOTE     |
|------------|--------|----------|----------|----------|-------------------|
| 04/09/2018 | AB     | JH       | MV       | B        | Issued for Review |
| 14/08/2018 | AB     | JH       | CC       | A        | Issued for Review |

0 100 200  
Metres  
1:8,500  
(A3) GDA 1994 MGA Zone 55



Monarc does not guarantee the accuracy or completeness of the map and does not make any warranty about the data.  
 Monarc is not under any liability to the user for any loss or damage (including consequential loss or damage) which the user may suffer resulting from the use of this map.



Path: L:\Consult\GIS\GIS\_WRM\Monarc\CribPt\toPakenham\ListedFloraFauna\_RevB.mxd

APA Transmission Pty Limited - 31-02984.00

### Crib Point Pakenham Pipeline Project Listed Flora and Fauna Page 19 of 24

WORK REQUEST NUMBER: 31-02984.00

DATA SOURCES:  
Service Layer Credits: Copyright © 2018 Garmin  
Source: Esri, DigitalGlobe, GeoEye, Earthstar Geographics, CNES/Airbus DS, USDA, USGS, AeroGRID, IGN, and the GIS User Community

| LEGEND  |                               |
|---|-------------------------------|
| Kilometre Points  | Listed Fauna                  |
| Large Scattered Trees                                   | Listed Avian Fauna            |
| Small Scattered Trees                                   | FFG Listed Aquatic Fauna      |
| Other Scattered Trees                                   | Glossy Grass Skink            |
| Flora Survey Site                                       | Growing Grass Frog            |
| Fauna Survey Site                                       | Southern Brown Bandicoot      |
|   | Southern Toadlet              |
| Water Course  | Crib Point Pakenham Alignment |
| Construction Footprint                                  | Water Body                    |
| Endangered  | Vulnerable                    |
| Least Concern   | Planted                       |
| EPBC Listed Subtropical and Temperate Coastal Saltmarsh |                               |

| ISSUE DATE | AUTHOR | QA CHECK | APPROVED | MAP REV. | REVISION NOTE     |
|------------|--------|----------|----------|----------|-------------------|
| 04/09/2018 | AB     | JH       | MV       | B        | Issued for Review |
| 14/08/2018 | AB     | JH       | CC       | A        | Issued for Review |

LOCATION DIAGRAM

1:8,500

(A3) GDA 1994 MGA Zone 55

Monarc does not guarantee the accuracy or completeness of the map and does not make any warranty about the data. Monarc is not under any liability to the user for any loss or damage (including consequential loss or damage) which the user may suffer resulting from the use of this map.



Path: L:\Consult\GIS\GIS\_WRM\Monarc\CribPt\ToPakenham\ListedFloraFauna\_RevB.mxd

APA Transmission Pty Limited - 31-02984.00

### Crib Point Pakenham Pipeline Project Listed Flora and Fauna Page 20 of 24

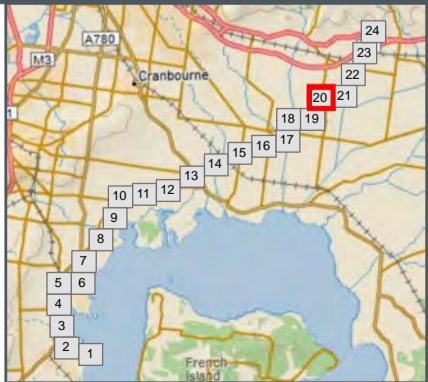
WORK REQUEST NUMBER: 31-02984.00

DATA SOURCES:  
Service Layer Credits: Copyright © 2018 Garmin  
Source: Esri, DigitalGlobe, GeoEye, Earthstar Geographics, CNES/Airbus DS, USDA, USGS, AeroGRID, IGN, and the GIS User Community

| Kilometre Points |                       | Listed Fauna |                          | Water Course |                               | Vegetation Patch |   |
|------------------|-----------------------|--------------|--------------------------|--------------|-------------------------------|------------------|---|
|                  | Kilometre Points      |              | Listed Avian Fauna       |              | Water Course                  |                  | Endangered  |
|                  | Large Scattered Trees |              | FFG Listed Aquatic Fauna |              | Crib Point Pakenham Alignment |                  | Vulnerable  |
|                  | Small Scattered Trees |              | Glossy Grass Skink       |              | Construction Footprint        |                  | Least Concern   |
|                  | Other Scattered Trees |              | Growing Grass Frog       |              | Water Body                    |                  | Planted   |
|                  | Flora Survey Site     |              | Southern Brown Bandicoot |              |                               |                  | EPBC Listed Subtropical and Temperate Coastal Saltmarsh |
|                  | Fauna Survey Site     |              | Southern Toadlet         |              |                               |                  |   |

| ISSUE DATE | AUTHOR | QA CHECK | APPROVED | MAP REV. | REVISION NOTE     |
|------------|--------|----------|----------|----------|-------------------|
| 04/09/2018 | AB     | JH       | MV       | B        | Issued for Review |
| 14/08/2018 | AB     | JH       | CC       | A        | Issued for Review |

#### LOCATION DIAGRAM



Monarc does not guarantee the accuracy or completeness of the map and does not make any warranty about the data.  
Monarc is not under any liability to the user for any loss or damage (including consequential loss or damage) which the user may suffer resulting from the use of this map.





Path: L:\Consult\GIS\GIS\_WRM\Monarc\CribPtToPakenham\ListedFloraFauna\_RevB.mxd

APA Transmission Pty Limited - 31-02984.00

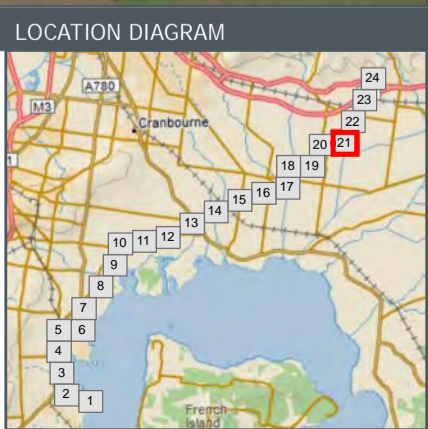
### Crib Point Pakenham Pipeline Project Listed Flora and Fauna Page 21 of 24

WORK REQUEST NUMBER: 31-02984.00

DATA SOURCES:  
Service Layer Credits: Copyright © 2018 Garmin  
Source: Esri, DigitalGlobe, GeoEye, Earthstar Geographics, CNES/Airbus DS, USDA, USGS, AeroGRID, IGN, and the GIS User Community

| LEGEND                |                          |                          |                        |                               |   |
|-----------------------|--------------------------|--------------------------|------------------------|-------------------------------|---|
| Kilometre Points      | Large Scattered Trees    | Listed Fauna             | Water Course           | Crib Point Pakenham Alignment | Endangered  |
| Small Scattered Trees | FFG Listed Aquatic Fauna | Glossy Grass Skink       | Construction Footprint | Vulnerable                    | Least Concern   |
| Other Scattered Trees | Growing Grass Frog       | Southern Brown Bandicoot | Water Body             | Planted                       | EPBC Listed Subtropical and Temperate Coastal Saltmarsh |
| Flora Survey Site     | Southern Toadlet         |                          |                        |                               |   |
| Fauna Survey Site     |                          |                          |                        |                               |   |

0 100 200  
Metres  
1:8,500  
(A3) GDA 1994 MGA Zone 55



Monarc does not guarantee the accuracy or completeness of the map and does not make any warranty about the data.  
Monarc is not under any liability to the user for any loss or damage (including consequential loss or damage) which the user may suffer resulting from the use of this map.



1. CPPST171
2. CPPST170
3. CPPST169
4. CPPST172
5. CPPST177
6. CPPST174
7. CPPST178
8. CPPST176
9. CPPST180
10. CPPST135

APA Transmission Pty Limited - 31-02984.00

### Crib Point Pakenham Pipeline Project Listed Flora and Fauna Page 22 of 24

WORK REQUEST NUMBER: 31-02984.00

DATA SOURCES:  
Service Layer Credits: Copyright © 2018 Garmin  
Source: Esri, DigitalGlobe, GeoEye, Earthstar Geographics, CNES/Airbus DS, USDA, USGS, AeroGRID, IGN, and the GIS User Community

| ISSUE DATE | AUTHOR | QA CHECK | APPROVED | MAP REV. | REVISION NOTE     |
|------------|--------|----------|----------|----------|-------------------|
| 04/09/2018 | AB     | JH       | MV       | B        | Issued for Review |
| 14/08/2018 | AB     | JH       | CC       | A        | Issued for Review |

**LEGEND**

- Kilometre Points
- Large Scattered Trees
- Small Scattered Trees
- Other Scattered Trees
- Flora Survey Site
- Fauna Survey Site
- Listed Fauna
- FFG Listed Aquatic Fauna
- Glossy Grass Skink
- Growing Grass Frog
- Southern Brown Bandicoot
- Southern Toadlet
- Water Course
- Crib Point Pakenham Alignment
- Construction Footprint
- Water Body
- Endangered
- Vulnerable
- Least Concern
- Planted
- EPBC Listed Subtropical and Temperate Coastal Saltmarsh

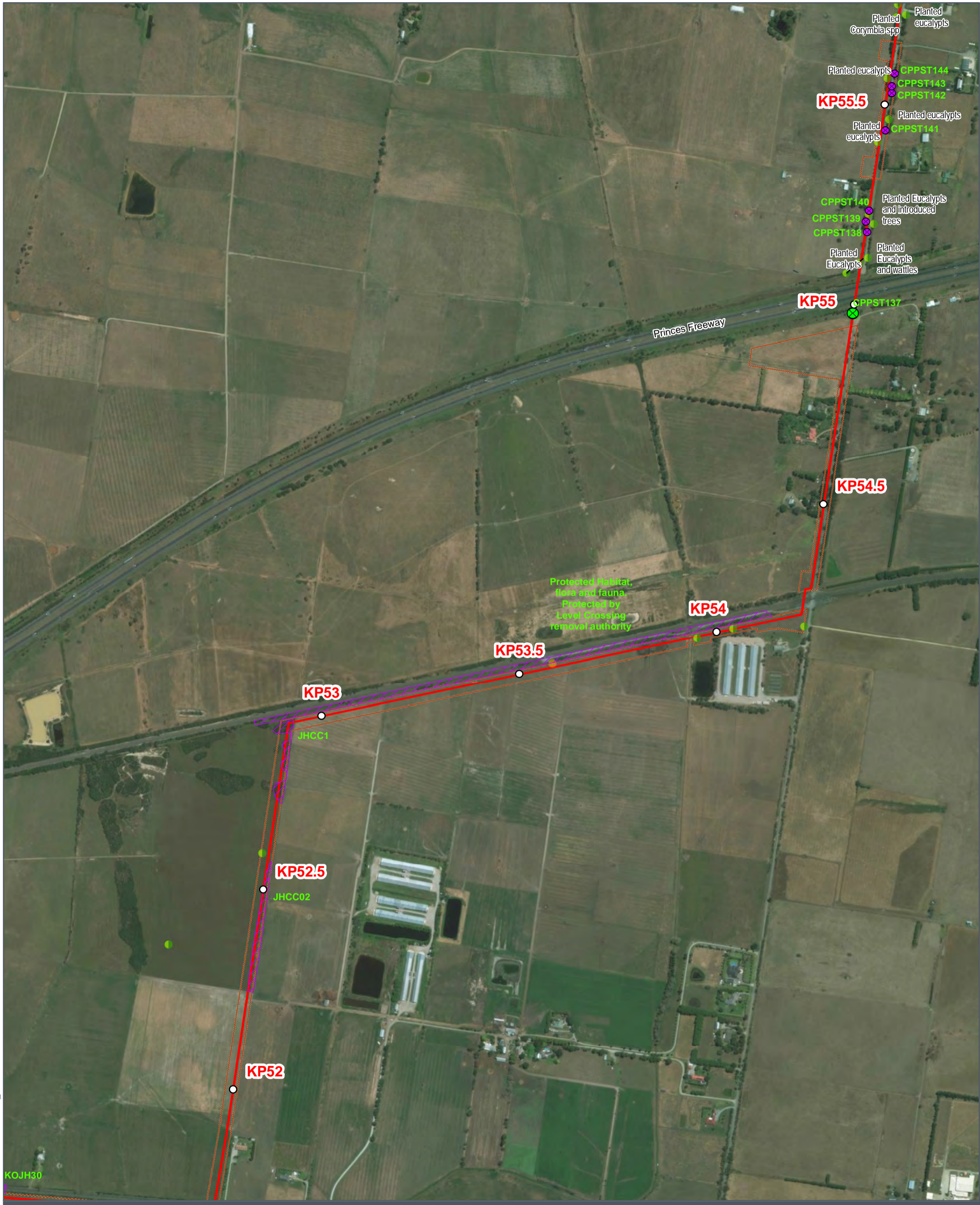
**LOCATION DIAGRAM**

0 100 200  
Metres  
1:8,500

(A3) GDA 1994 MGA Zone 55

Path: L:\Consult\GIS\GIS\_WRM\Monarc\CribPt\ToPakenham\ListedFloraFauna\_RevB.mxd

Monarc does not guarantee the accuracy or completeness of the map and does not make any warranty about the data. Monarc is not under any liability to the user for any loss or damage (including consequential loss or damage) which the user may suffer resulting from the use of this map.



Path: L:\Consult\GIS\GIS\_WRM\Monarc\CribPt\ListedFloraFauna\_RevB.mxd

APA Transmission Pty Limited - 31-02984.00

### Crib Point Pakenham Pipeline Project Listed Flora and Fauna Page 23 of 24

WORK REQUEST NUMBER: 31-02984.00

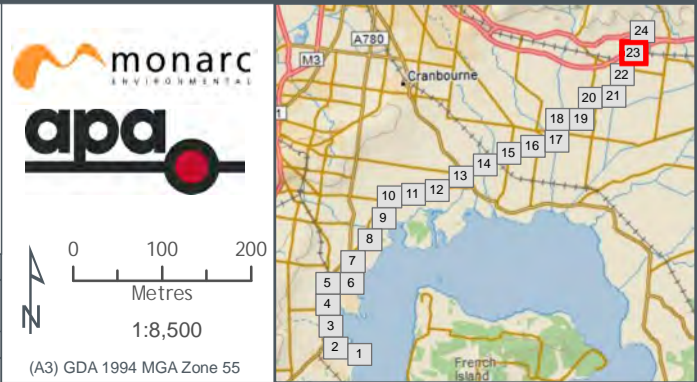
DATA SOURCES:  
Service Layer Credits: Copyright © 2018 Garmin  
Source: Esri, DigitalGlobe, GeoEye, Earthstar Geographics, CNES/Airbus DS, USDA, USGS, AeroGRID, IGN, and the GIS User Community

| ISSUE DATE | AUTHOR | QA CHECK | APPROVED | MAP REV. | REVISION NOTE     |
|------------|--------|----------|----------|----------|-------------------|
| 04/09/2018 | AB     | JH       | MV       | B        | Issued for Review |
| 14/08/2018 | AB     | JH       | CC       | A        | Issued for Review |

#### LEGEND

- |   |   |   |   |
|---|---|---|---|
| <ul style="list-style-type: none"> <li>○ Kilometre Points</li> <li>● Large Scattered Trees</li> <li>● Small Scattered Trees</li> <li>● Other Scattered Trees</li> <li>● Flora Survey Site</li> <li>● Fauna Survey Site</li> </ul> | <ul style="list-style-type: none"> <li>● Listed Fauna</li> <li>● Listed Avian Fauna</li> <li>● FFG Listed Aquatic Fauna</li> <li>● Glossy Grass Skink</li> <li>● Growling Grass Frog</li> <li>● Southern Brown Bandicoot</li> <li>● Southern Toadlet</li> </ul> | <ul style="list-style-type: none"> <li>— Water Course</li> <li>— Crib Point Pakenham Alignment</li> <li>— Construction Footprint</li> <li>— Water Body</li> </ul> | <ul style="list-style-type: none"> <li>■ Endangered</li> <li>■ Vulnerable</li> <li>■ Least Concern</li> <li>■ Planted</li> <li>■ EPBC Listed Subtropical and Temperate Coastal Saltmarsh</li> </ul> |
|---|---|---|---|

#### LOCATION DIAGRAM



Monarc does not guarantee the accuracy or completeness of the map and does not make any warranty about the data. Monarc is not under any liability to the user for any loss or damage (including consequential loss or damage) which the user may suffer resulting from the use of this map.



APA Transmission Pty Limited - 31-02984.00

### Crib Point Pakenham Pipeline Project Listed Flora and Fauna Page 24 of 24

WORK REQUEST NUMBER: 31-02984.00

DATA SOURCES:  
Service Layer Credits: Copyright © 2018 Garmin  
Source: Esri, DigitalGlobe, GeoEye, Earthstar Geographics, CNES/Airbus DS, USDA, USGS, AeroGRID, IGN, and the GIS User Community

| ISSUE DATE | AUTHOR | QA CHECK | APPROVED | MAP REV. | REVISION NOTE     |
|------------|--------|----------|----------|----------|-------------------|
| 04/09/2018 | AB     | JH       | MV       | B        | Issued for Review |
| 14/08/2018 | AB     | JH       | CC       | A        | Issued for Review |

**LEGEND**

- Kilometre Points
- Large Scattered Trees
- Small Scattered Trees
- Other Scattered Trees
- Flora Survey Site
- Fauna Survey Site
- Listed Fauna
- FFG Listed Aquatic Fauna
- Glossy Grass Skink
- Growing Grass Frog
- Southern Brown Bandicoot
- Southern Toadlet
- Water Course
- Crib Point Pakenham Alignment
- Construction Footprint
- Water Body
- Endangered
- Vulnerable
- Least Concern
- Planted
- EPBC Listed Subtropical and Temperate Coastal Saltmarsh

**LOCATION DIAGRAM**

0 100 200  
Metres  
1:8,500  
(A3) GDA 1994 MGA Zone 55

Path: L:\Consult\GIS\GIS\_WRM\Monarc\CribPt\ToPakenham\ListedFloraFauna\_RevB.mxd

Monarc does not guarantee the accuracy or completeness of the map and does not make any warranty about the data. Monarc is not under any liability to the user for any loss or damage (including consequential loss or damage) which the user may suffer resulting from the use of this map.