

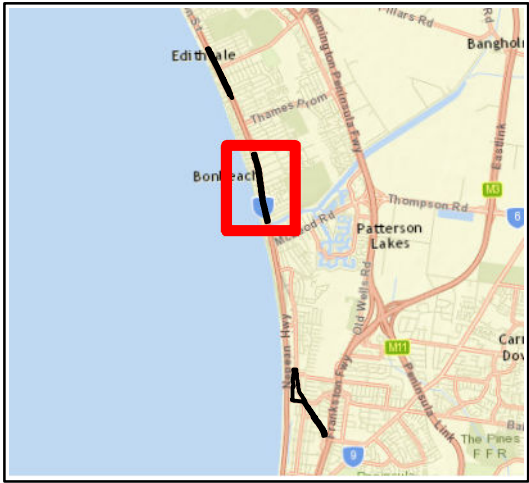
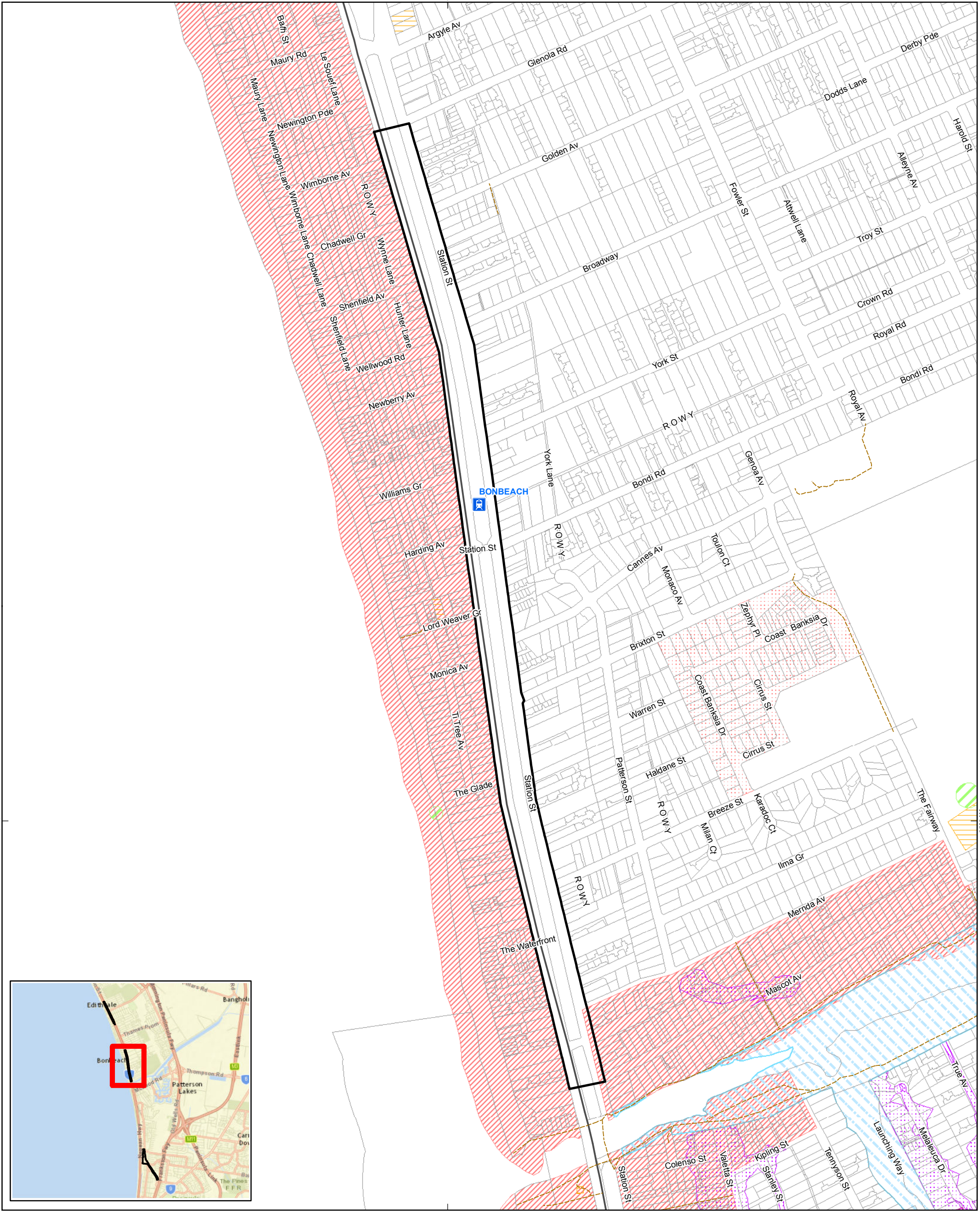
PLANNING OVERLAYS (28/09/2016)

- Environmental Significance
- Heritage
- Design And Development
- Special Building

X:\Project Data\PRGM\GIS\GHD\Maps\Working\Planning\31-33036_001_F8_split_Planning_20160928.mxd

© 2016. Whilst every care has been taken to prepare this map, GHD (and DATA CUSTODIAN) make no representations or warranties about its accuracy, reliability, completeness or suitability for any particular purpose and cannot accept liability and responsibility of any kind (whether in contract, tort or otherwise) for any expenses, losses, damages and/or costs (including indirect or consequential damage) which are or may be incurred by any party as a result of the map being inaccurate, incomplete or unsuitable in any way and for any reason.

Data source: Planning Zones, Vicmap Data, DELWP, 2016. Investigation Area, LXRA, 20/06/2016. Created by:edged



PLANNING OVERLAYS (28/09/2016)

- | | | | |
|--|--|--|---|
|  Environmental Significance |  Development Plan |  Land Subject to Inundation |  Environmental Audit |
|  Design And Development |  Heritage |  Special Building | |

Paper Size A3
0 25 50 100
Metres
Map Projection: Transverse Mercator
Horizontal Datum: GDA 1994
Grid: GDA 1994 MGA Zone 55



Station St, Bonbeach
Planning Overlays