



Path: L:\Consult\GIS\GIS_WRM\Monarc\CribPtToPakenham\ListedFloraFauna_RevB.mxd

APA Transmission Pty Limited - 31-02984.00

Crib Point Pakenham Pipeline Project Listed Flora and Fauna Page 3 of 24

WORK REQUEST NUMBER: 31-02984.00

DATA SOURCES:
Service Layer Credits: Copyright© 2018 Garmin
Source: Esri, DigitalGlobe, GeoEye, Earthstar Geographics, CNES/Airbus DS, USDA, USGS, AeroGRID, IGN, and the GIS User Community

ISSUE DATE	AUTHOR	QA CHECK	APPROVED	MAP REV.	REVISION NOTE
04/09/2018	AB	JH	MV	B	Issued for Review
14/08/2018	AB	JH	CC	A	Issued for Review

LEGEND

- Kilometre Points
- Large Scattered Trees
- Small Scattered Trees
- Other Scattered Trees
- Flora Survey Site
- Fauna Survey Site
- Water Course
- Crib Point Pakenham Alignment
- Construction Footprint
- Water Body

Listed Fauna

- Listed Avian Fauna
- FFG Listed Aquatic Fauna
- Glossy Grass Skink
- Growing Grass Frog
- Southern Brown Bandicoot
- Southern Toadlet

Vegetation Patch

- ▨ Endangered
- ▨ Vulnerable
- ▨ Least Concern
- ▨ Planted
- ▨ EPBC Listed Subtropical and Temperate Coastal Saltmarsh

LOCATION DIAGRAM

0 100 200
Metres
1:8,500

(A3) GDA 1994 MGA Zone 55

Monarc does not guarantee the accuracy or completeness of the map and does not make any warranty about the data. Monarc is not under any liability to the user for any loss or damage (including consequential loss or damage) which the user may suffer resulting from the use of this map.



APA Transmission Pty Limited - 31-02984.00

Crib Point Pakenham Pipeline Project Listed Flora and Fauna Page 4 of 24

WORK REQUEST NUMBER: 31-02984.00

DATA SOURCES:
Service Layer Credits: Copyright:© 2018 Garmin
Source: Esri, DigitalGlobe, GeoEye, Earthstar Geographics, CNES/Airbus DS, USDA, USGS, AeroGRID, IGN, and the GIS User Community

ISSUE DATE	AUTHOR	QA CHECK	APPROVED	MAP REV.	REVISION NOTE
04/09/2018	AB	JH	MV	B	Issued for Review
14/08/2018	AB	JH	CC	A	Issued for Review

LEGEND

- Water Course
- Crib Point Pakenham Alignment
- Construction Footprint
- Water Body

Vegetation Patch

- Endangered
- Vulnerable
- Least Concern
- Planted
- EPBC Listed Subtropical and Temperate Coastal Saltmarsh

LOCATION DIAGRAM

0 100 200
Metres
1:8,500

(A3) GDA 1994 MGA Zone 55

Monarc does not guarantee the accuracy or completeness of the map and does not make any warranty about the data. Monarc is not under any liability to the user for any loss or damage (including consequential loss or damage) which the user may suffer resulting from the use of this map.

Path: L:\Consul\GIS\GIS_Works\Monarc\CribPtToPakenham\ListedFloraFauna_RevB.mxd



Path: L:\Consult\GIS\GIS_WRM\Monarc\CribPtToPakenham\ListedFloraFauna_RevB.mxd

APA Transmission Pty Limited - 31-02984.00

Crib Point Pakenham Pipeline Project Listed Flora and Fauna Page 5 of 24

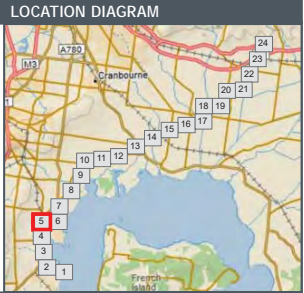
WORK REQUEST NUMBER: 31-02984.00

DATA SOURCES:
Service Layer Credits: Copyright© 2018 Garmin
Source: Esri, DigitalGlobe, GeoEye, Earthstar Geographics, CNES/Airbus DS, USDA, USGS, AeroGRID, IGN, and the GIS User Community

ISSUE DATE	AUTHOR	QA CHECK	APPROVED	MAP REV.	REVISION NOTE
04/09/2018	AB	JH	MV	B	Issued for Review
14/08/2018	AB	JH	CC	A	Issued for Review

monarc
ENVIRONMENTAL

apa



Monarc does not guarantee the accuracy or completeness of the map and does not make any warranty about the data. Monarc is not under any liability to the user for any loss or damage (including consequential loss or damage) which the user may suffer resulting from the use of this map.



Path: L:\Consult\GIS\GIS_WRM\Monarc\CribPtToPakenham\ListedFloraFauna_RevB.mxd

APA Transmission Pty Limited - 31-02984.00

Crib Point Pakenham Pipeline Project Listed Flora and Fauna Page 6 of 24

WORK REQUEST NUMBER: 31-02984.00

DATA SOURCES:
Service Layer Credits: Copyright:© 2018 Garmin
Source: Esri, DigitalGlobe, GeoEye, Earthstar Geographics,
CNES/Airbus DS, USDA, USGS, AeroGRID, IGN, and the GIS User
Community

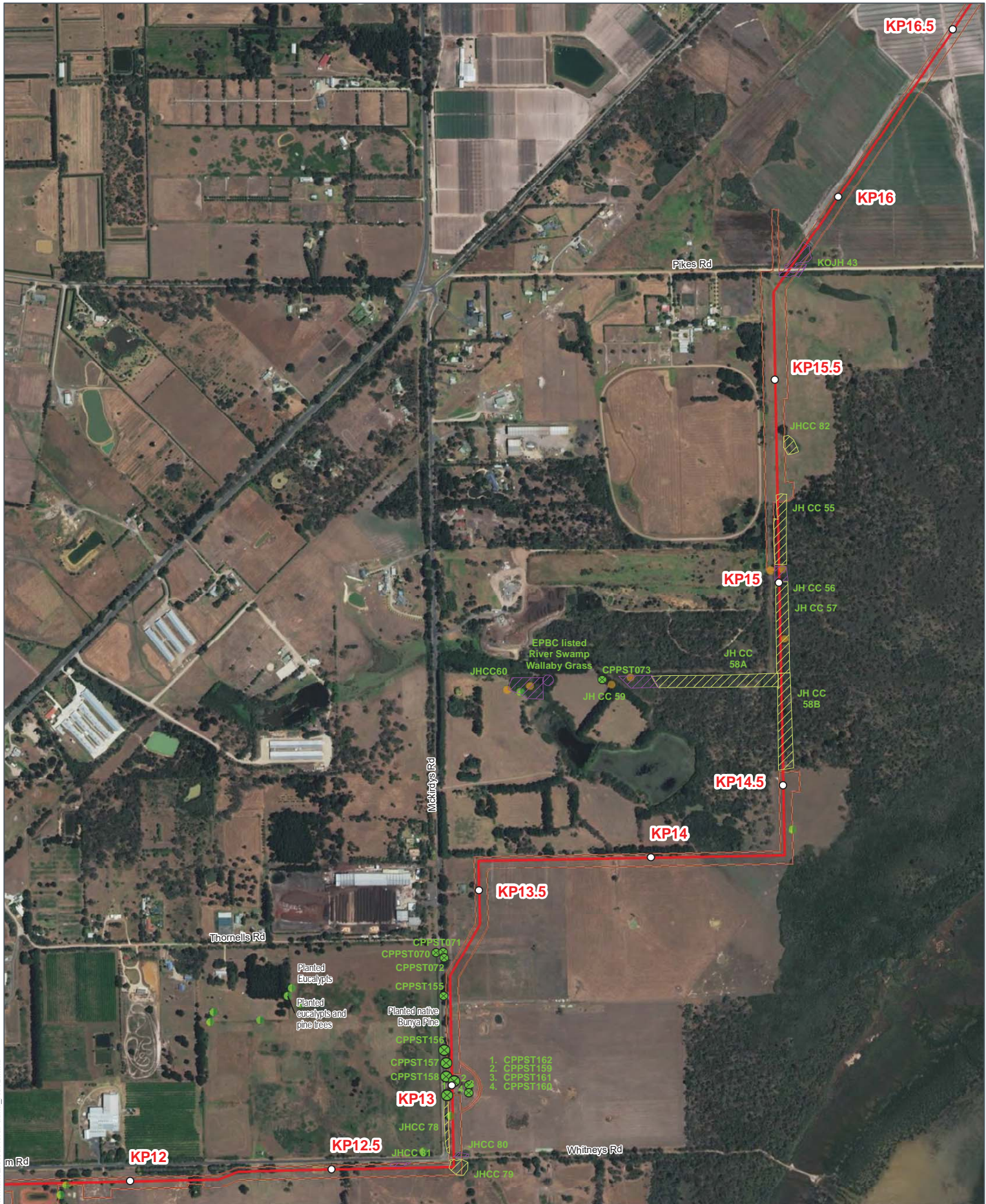
LEGEND

- | | | |
|-----------------------|--------------------------|-------------------------------|
| Kilometre Points | Listed Fauna | Water Course |
| Large Scattered Trees | Listed Avian Fauna | Crib Point Pakenham Alignment |
| Small Scattered Trees | FFG Listed Aquatic Fauna | Construction Footprint |
| Other Scattered Trees | Glossy Grass Skink | Water Body |
| Flora Survey Site | Growling Grass Frog | |
| Fauna Survey Site | Southern Brown Bandicoot | |
| | Southern Toadlet | |

- | |
|---|
| Endangered |
| Vulnerable |
| Least Concern |
| Planted |
| EPBC Listed Subtropical and Temperate Coastal Sallmarsh |

LOCATION DIAGRAM

Monarc does not guarantee the accuracy or completeness of the map and does not make any warranty about the data. Monarc is not under any liability to the user for any loss or damage (including consequential loss or damage) which the user may suffer resulting from the use of this map.



APA Transmission Pty Limited - 31-02984.00

Crib Point Pakenham Pipeline Project Listed Flora and Fauna Page 7 of 24

WORK REQUEST NUMBER: 31-02984.00

DATA SOURCES:
Service Layer Credits: Copyright:© 2018 Garmin
Source: Esri, DigitalGlobe, GeoEye, Earthstar Geographics, CNES/Airbus DS, USDA, USGS, AeroGRID, IGN, and the GIS User Community

ISSUE DATE	AUTHOR	QA CHECK	APPROVED	MAP REV.	REVISION NOTE
04/09/2018	AB	JH	MV	B	Issued for Review
14/08/2018	AB	JH	CC	A	Issued for Review

LEGEND

- Water Course
- Crib Point Pakenham Alignment
- Construction Footprint
- Water Body

Vegetation Patch

- Endangered
- Vulnerable
- Least Concern
- Planted
- EPBC Listed Subtropical and Temperate Coastal Saltmarsh

LOCATION DIAGRAM

0 100 200
Metres
1:8,500

(A3) GDA 1994 MGA Zone 55

Path: L:\Consult\GIS\GIS_WRM\Monarc\CribPtToPakenham\ListedFloraFauna_RevB.mxd

Monarc does not guarantee the accuracy or completeness of the map and does not make any warranty about the data. Monarc is not under any liability to the user for any loss or damage (including consequential loss or damage) which the user may suffer resulting from the use of this map.



APA Transmission Pty Limited - 31-02984.00

Crib Point Pakenham Pipeline Project Listed Flora and Fauna Page 8 of 24

WORK REQUEST NUMBER: 31-02984.00

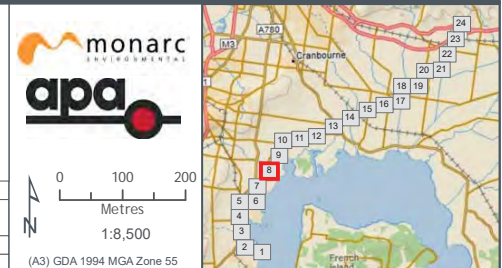
DATA SOURCES:
Service Layer Credits: Copyright© 2018 Garmin
Source: Esri, DigitalGlobe, GeoEye, Earthstar Geographics,
CNES/Airbus DS, USDA, USGS, AeroGRID, IGN, and the GIS User
Community

ISSUE DATE	AUTHOR	QA CHECK	APPROVED	MAP REV.	REVISION NOTE
04/09/2018	AB	JH	MV	B	Issued for Review
14/08/2018	AB	JH	CC	A	Issued for Review

LEGEND

- | | | | |
|---|---|---|--|
| <ul style="list-style-type: none"> ○ Kilometre Points ● Large Scattered Trees ● Small Scattered Trees ● Other Scattered Trees ● Flora Survey Site ● Fauna Survey Site | <ul style="list-style-type: none"> ● Listed Avian Fauna ● FFG Listed Aquatic Fauna ● Glossy Grass Skink ● Growing Grass Frog ● Southern Brown Bandicoot ● Southern Toadlet | <ul style="list-style-type: none"> — Water Course — Crib Point Pakenham Alignment — Construction Footprint — Water Body | <ul style="list-style-type: none"> Endangered Vulnerable Least Concern Planted EPBC Listed Subtropical and Temperate Coastal Saltmarsh |
|---|---|---|--|

LOCATION DIAGRAM



Path: L:\Consult\GIS\GIS - WRM\Monarc\CribPtToPakenham\ListedFloraFauna_RevB.mxd

Monarc does not guarantee the accuracy or completeness of the map and does not make any warranty about the data. Monarc is not under any liability to the user for any loss or damage (including consequential loss or damage) which the user may suffer resulting from the use of this map.



APA Transmission Pty Limited - 31-02984.00

Crib Point Pakenham Pipeline Project Listed Flora and Fauna Page 9 of 24

WORK REQUEST NUMBER: 31-02984.00

DATA SOURCES:
Service Layer Credits: Copyright:© 2018 Garmin
Source: Esri, DigitalGlobe, GeoEye, Earthstar Geographics, CNES/Airbus DS, USDA, USGS, AeroGRID, IGN, and the GIS User Community

ISSUE DATE	AUTHOR	QA CHECK	APPROVED	MAP REV.	REVISION NOTE
04/09/2018	AB	JH	MV	B	Issued for Review
14/08/2018	AB	JH	CC	A	Issued for Review

LEGEND

- Water Course
- Crib Point Pakenham Alignment
- Construction Footprint
- Water Body

Vegetation Patch

- Endangered
- Vulnerable
- Least Concern
- Planted
- EPBC Listed Subtropical and Temperate Coastal Saltmarsh

LOCATION DIAGRAM

0 100 200
Metres
1:8,500

(A3) GDA 1994 MGA Zone 55

Path: L:\Consult\GIS\GIS_WRM\Monarc\CribPtToPakenham\ListedFloraFauna_RevB.mxd

Monarc does not guarantee the accuracy or completeness of the map and does not make any warranty about the data. Monarc is not under any liability to the user for any loss or damage (including consequential loss or damage) which the user may suffer resulting from the use of this map.



APA Transmission Pty Limited - 31-02984.00

Crib Point Pakenham Pipeline Project Listed Flora and Fauna Page 10 of 24

WORK REQUEST NUMBER: 31-02984.00

DATA SOURCES:
Service Layer Credits: Copyright© 2018 Garmin
Source: Esri, DigitalGlobe, GeoEye, Earthstar Geographics, CNES/Airbus DS, USDA, USGS, AeroGRID, IGN, and the GIS User Community

LEGEND					
	Kilometre Points		Water Course		Vegetation Patch
	Large Scattered Trees		Crib Point Pakenham Alignment		Endangered
	Small Scattered Trees		Construction Footprint		Vulnerable
	Other Scattered Trees		Water Body		Least Concern
	Flora Survey Site				Planted
	Fauna Survey Site				EPBC Listed Subtropical and Temperate Coastal Saltmarsh
	Listed Fauna		Listed Avian Fauna		Glossy Grass Skink
	FFG Listed Aquatic Fauna		Growing Grass Frog		Southern Brown Bandicoot
	Southern Brown Bandicoot		Southern Toadlet		

0 100 200
Metres
1:8,500

(A3) GDA 1994 MGA Zone 55

Path: L:\Consulting\GIS\GIS_Works\monarc\CribPtPakenham\ListedFloraFauna_RevB.mxd

Monarc does not guarantee the accuracy or completeness of the map and does not make any warranty about the data. Monarc is not under any liability to the user for any loss or damage (including consequential loss or damage) which the user may suffer resulting from the use of this map.



APA Transmission Pty Limited - 31-02984.00

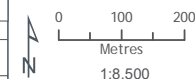
Crib Point Pakenham Pipeline Project Listed Flora and Fauna Page 11 of 24

WORK REQUEST NUMBER: 31-02984.00

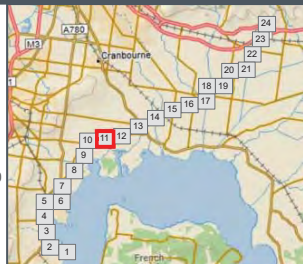
DATA SOURCES:
Service Layer Credits: Copyright© 2018 Garmin
Source: Esri, DigitalGlobe, GeoEye, Earthstar Geographics,
CNES/Airbus DS, USDA, USGS, AeroGRID, IGN, and the GIS User
Community

LEGEND					
	Kilometre Points		Water Course		Vegetation Patch
	Large Scattered Trees		Crib Point Pakenham Alignment		Endangered
	Small Scattered Trees		Construction Footprint		Vulnerable
	Other Scattered Trees		Water Body		Least Concern
	Flora Survey Site				Planted
	Fauna Survey Site				EPBC Listed Subtropical and Temperate Coastal Saltmarsh
	Listed Fauna				
	Listed Avian Fauna				
	FFG Listed Aquatic Fauna				
	Glossy Grass Skink				
	Growing Grass Frog				
	Southern Brown Bandicoot				
	Southern Toadlet				

LOCATION DIAGRAM



(A3) GDA 1994 MGA Zone 55





Path: L:\Consult\GIS\GIS_WRM\Monarc\CribPtToPakenham\ListedFloraFauna_RevB.mxd

APA Transmission Pty Limited - 31-02984.00

Crib Point Pakenham Pipeline Project Listed Flora and Fauna Page 12 of 24

WORK REQUEST NUMBER: 31-02984.00

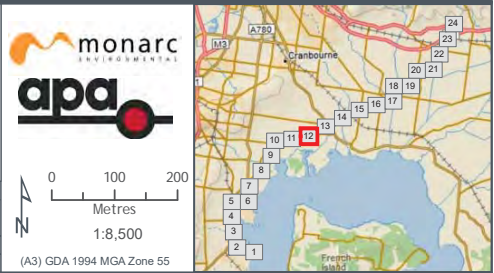
DATA SOURCES:
Service Layer Credits: Copyright:© 2018 Garmin
Source: Esri, DigitalGlobe, GeoEye, Earthstar Geographics,
CNES/Airbus DS, USDA, USGS, AeroGRID, IGN, and the GIS User
Community

ISSUE DATE	AUTHOR	QA CHECK	APPROVED	MAP REV.	REVISION NOTE
04/09/2018	AB	JH	MV	B	Issued for Review
14/08/2018	AB	JH	CC	A	Issued for Review

LEGEND

- | | | |
|----------------------------|---------------------------------|---|
| ○ Kilometre Points | — Water Course | ■ Endangered |
| ⊗ Large Scattered Trees | — Crib Point Pakenham Alignment | ■ Vulnerable |
| ⊙ Small Scattered Trees | — Construction Footprint | ■ Least Concern |
| ⊕ Other Scattered Trees | — Water Body | ■ Planted |
| ● Flora Survey Site | | ■ EPBC Listed Subtropical and Temperate Coastal Saltmarsh |
| ● Fauna Survey Site | | |
| Listed Fauna | | |
| ● Listed Avian Fauna | | |
| ● FFG Listed Aquatic Fauna | | |
| ● Glossy Grass Skink | | |
| ● Growing Grass Frog | | |
| ● Southern Brown Bandicoot | | |
| ● Southern Toadlet | | |

LOCATION DIAGRAM



Monarc does not guarantee the accuracy or completeness of the map and does not make any warranty about the data. Monarc is not under any liability to the user for any loss or damage (including consequential loss or damage) which the user may suffer resulting from the use of this map.



APA Transmission Pty Limited - 31-02984.00

Crib Point Pakenham Pipeline Project Listed Flora and Fauna Page 13 of 24

WORK REQUEST NUMBER: 31-02984.00

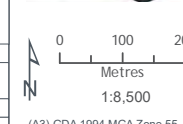
DATA SOURCES:
Service Layer Credits: Copyright © 2018 Garmin
Source: Esri, DigitalGlobe, GeoEye, Earthstar Geographics,
CNES/Airbus DS, USDA, USGS, AeroGRID, IGN, and the GIS User
Community

LEGEND

- | | | |
|-------------------------|----------------------------|---------------------------------|
| ○ Kilometre Points | ○ Listed Fauna | — Water Course |
| ● Large Scattered Trees | ● Listed Avian Fauna | — Crib Point Pakenham Alignment |
| ● Small Scattered Trees | ● FFG Listed Aquatic Fauna | — Construction Footprint |
| ● Other Scattered Trees | ● Glossy Grass Skink | — Water Body |
| ● Flora Survey Site | ● Growing Grass Frog | |
| ● Fauna Survey Site | ● Southern Brown Bandicoot | |
| | ● Southern Toadlet | |

- #### Vegetation Patch
- Endangered
 - Vulnerable
 - Least Concern
 - Planted
 - EPBC Listed Subtropical and Temperate Coastal Saltmarsh

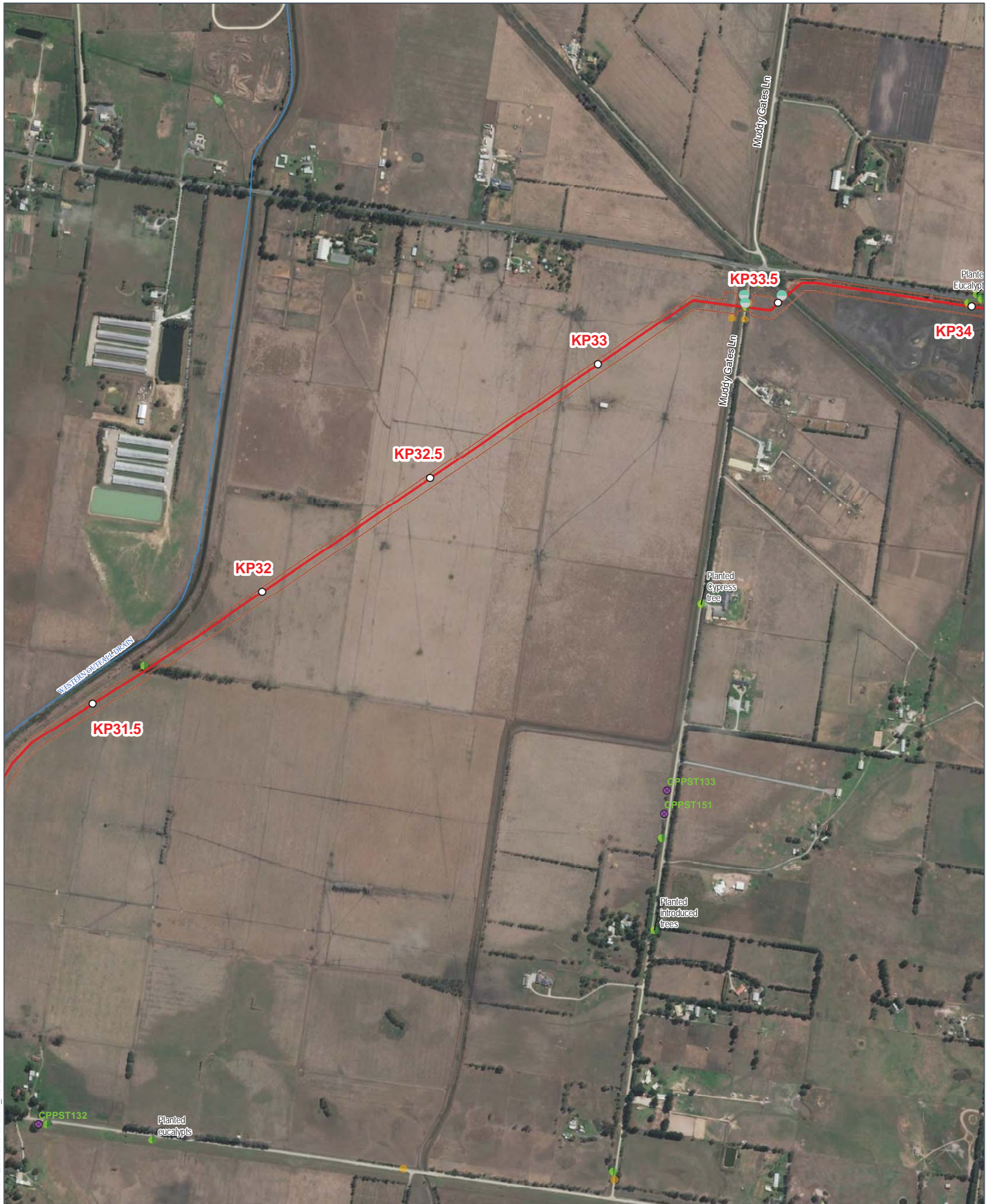
LOCATION DIAGRAM



(A3) GDA 1994 MGA Zone 55

Path: L:\Consult\GIS\GIS_WRM\Monarc\CribPtToPakenham\ListedFloraFauna_RevB.mxd

Monarc does not guarantee the accuracy or completeness of the map and does not make any warranty about the data. Monarc is not under any liability to the user for any loss or damage (including consequential loss or damage) which the user may suffer resulting from the use of this map.



APA Transmission Pty Limited - 31-02984.00

Crib Point Pakenham Pipeline Project Listed Flora and Fauna Page 14 of 24

WORK REQUEST NUMBER: 31-02984.00

DATA SOURCES:
Service Layer Credits: Copyright© 2018 Garmin
Source: Esri, DigitalGlobe, GeoEye, Earthstar Geographics,
CNES/Airbus DS, USDA, USGS, AeroGRID, IGN, and the GIS User
Community

ISSUE DATE	AUTHOR	QA CHECK	APPROVED	MAP REV.	REVISION NOTE
04/09/2018	AB	JH	MV	B	Issued for Review
14/08/2018	AB	JH	CC	A	Issued for Review

LEGEND

- | | | | |
|---|--|---|---|
| <ul style="list-style-type: none"> ○ Kilometre Points ⊗ Large Scattered Trees ⊙ Small Scattered Trees ⊕ Other Scattered Trees ● Flora Survey Site ● Fauna Survey Site | <ul style="list-style-type: none"> ● Listed Avian Fauna ● FFG Listed Aquatic Fauna ● Glossy Grass Skink ● Growing Grass Frog ● Southern Brown Bandicoot ● Southern Toadlet | <ul style="list-style-type: none"> — Water Course — Crib Point Pakenham Alignment — Construction Footprint — Water Body | <ul style="list-style-type: none"> ▭ Endangered ▭ Vulnerable ▭ Least Concern ▭ Planted ▭ EPBC Listed Subtropical and Temperate Coastal Saltmarsh |
|---|--|---|---|

LOCATION DIAGRAM



Path: L:\Consult\GIS\GIS_WRM\Monarc\CribPtToPakenham\ListedFloraFauna_RevB.mxd