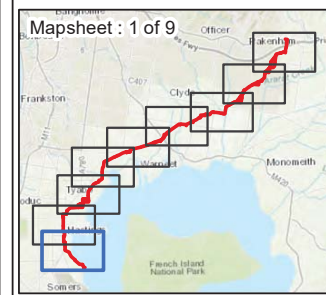


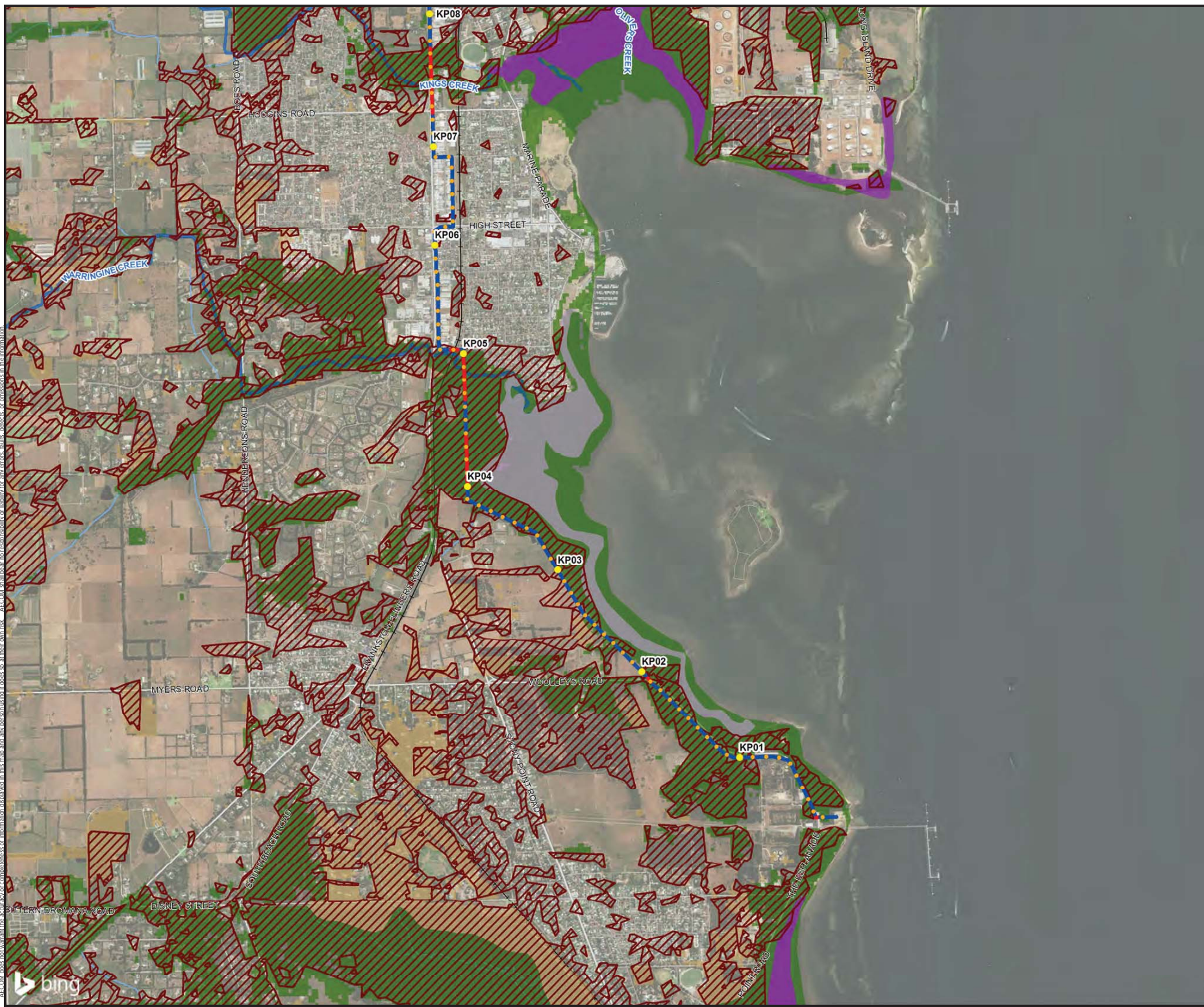
- LEGEND**
- Trench
 - Trenchless
 - Baimsdale-Melbourne Railway
 - Watercourses
 - Terrestrial Groundwater Dependent Ecosystems
- Aquatic GDE**
- Known GDE (regional studies)
 - High potential GDE (regional studies)
 - Moderate potential GDE (regional studies)
 - Low potential GDE (regional studies)
 - Unclassified potential GDE (regional studies)
 - High potential GDE (national assessment)
 - Moderate potential GDE (national assessment)
- Terrestrial GDE**
- High potential GDE (national assessment)
 - Moderate potential GDE (national assessment)
 - Low potential GDE (national assessment)

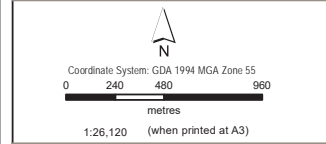


Groundwater Dependent Ecosystems

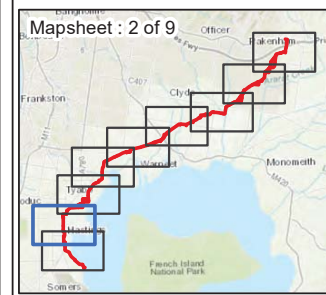
APA Group
 Hydrological and Hydrogeological Assessment – Crib Point to Pakenham Pipeline Project
 Westerport, VIC

Figure
F7a

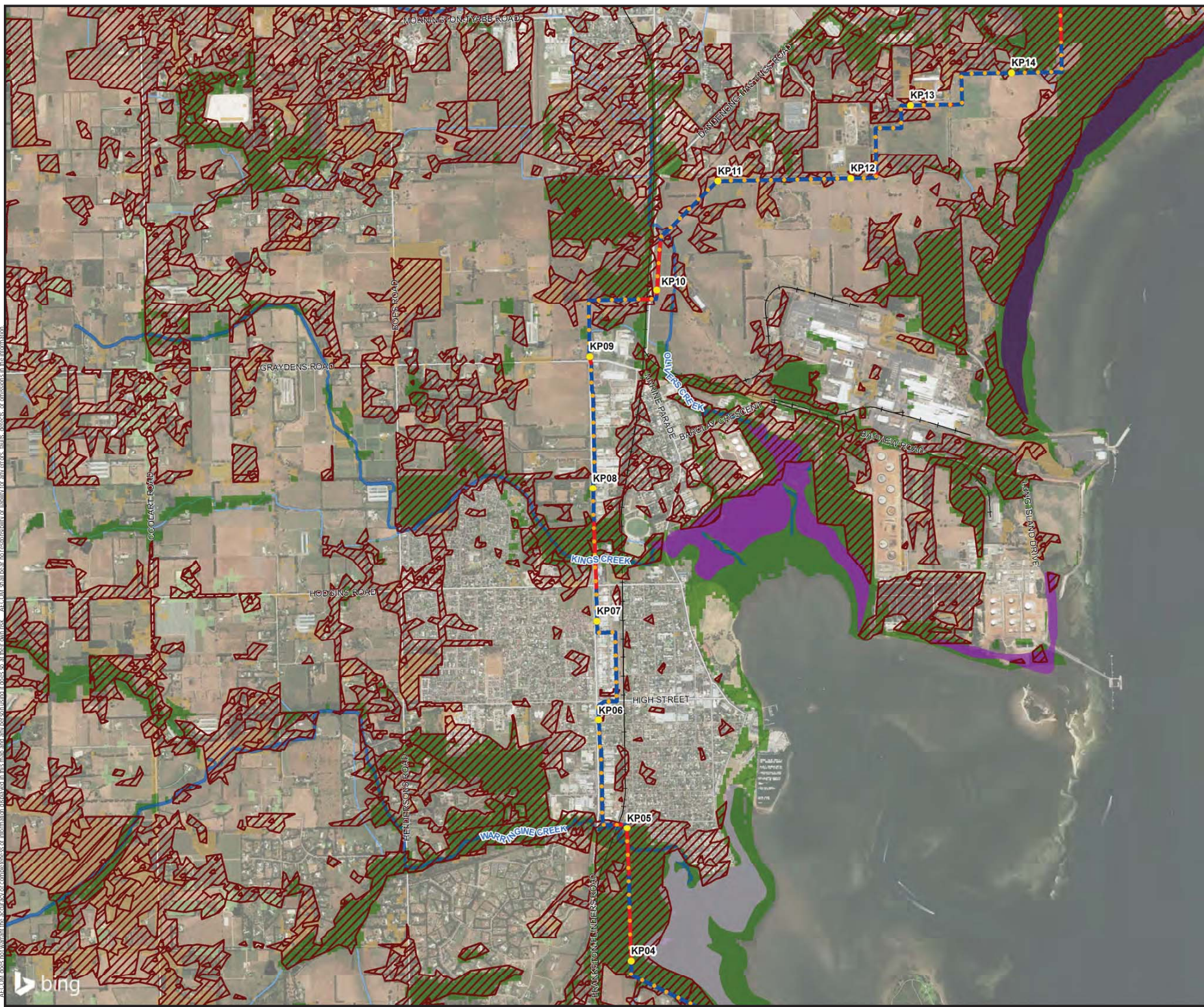


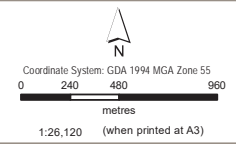


- LEGEND**
- Trench
 - Trenchless
 - Baimsdale-Melbourne Railway
 - Watercourses
 - ▨ Terrestrial Groundwater Dependent Ecosystems
- Aquatic GDE**
- ▨ Known GDE (regional studies)
 - ▨ High potential GDE (regional studies)
 - ▨ Moderate potential GDE (regional studies)
 - ▨ Low potential GDE (regional studies)
 - ▨ Unclassified potential GDE (regional studies)
 - ▨ High potential GDE (national assessment)
 - ▨ Moderate potential GDE (national assessment)
- Terrestrial GDE**
- ▨ High potential GDE (national assessment)
 - ▨ Moderate potential GDE (national assessment)
 - ▨ Low potential GDE (national assessment)

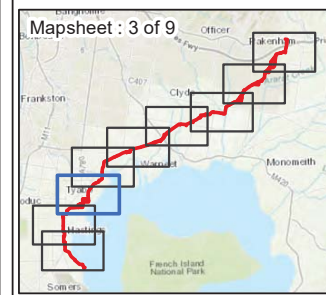


Groundwater Dependant Ecosystems





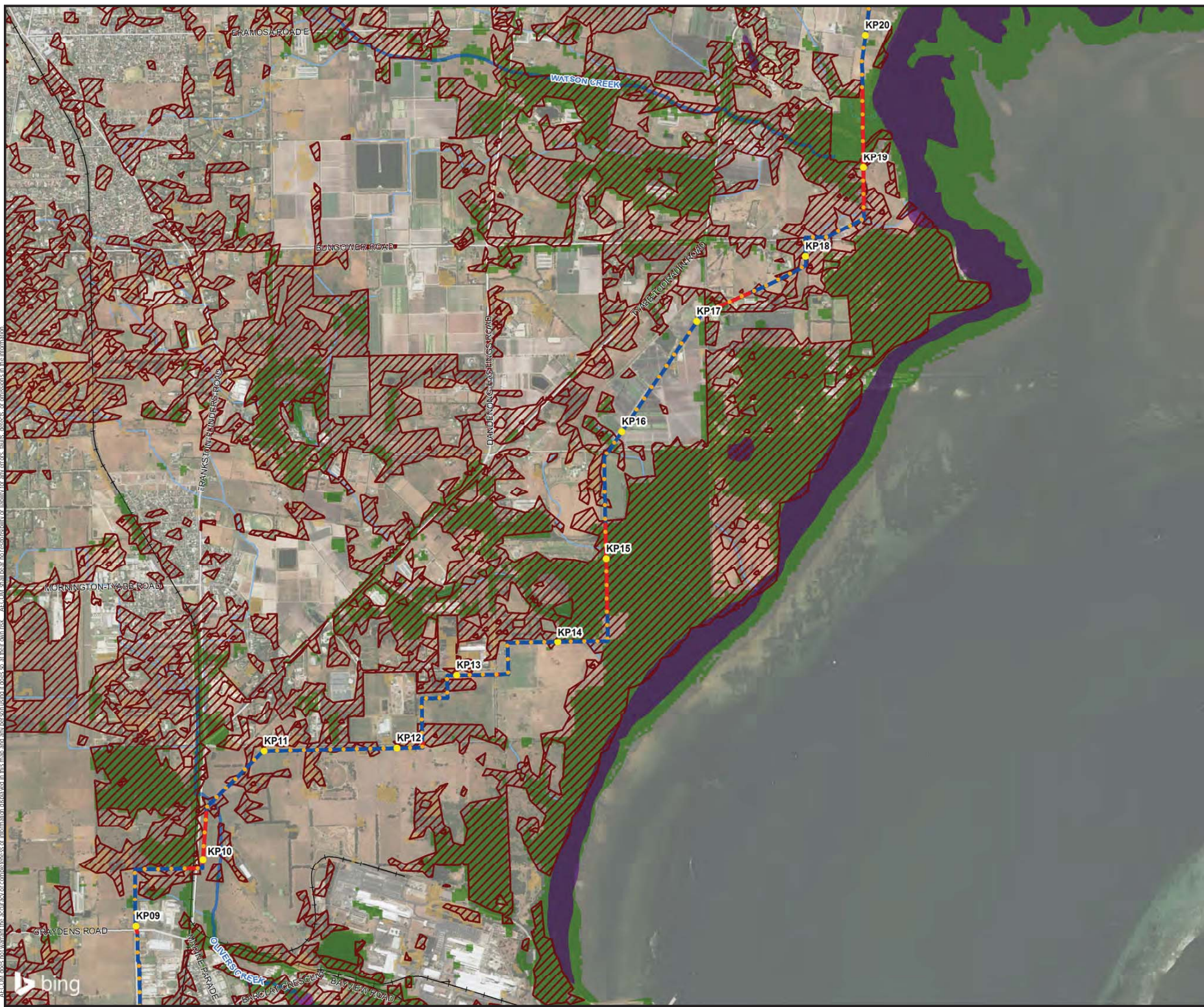
- LEGEND**
- Trenchless
 - Trenchless
 - Baimsdale-Melbourne Railway
 - Watercourses
 - Terrestrial Groundwater Dependant Ecosystems
- Aquatic GDE**
- Known GDE (regional studies)
 - High potential GDE (regional studies)
 - Moderate potential GDE (regional studies)
 - Low potential GDE (regional studies)
 - Unclassified potential GDE (regional studies)
 - High potential GDE (national assessment)
 - Moderate potential GDE (national assessment)
- Terrestrial GDE**
- High potential GDE (national assessment)
 - Moderate potential GDE (national assessment)
 - Low potential GDE (national assessment)

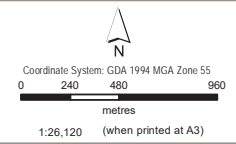


Groundwater Dependant Ecosystems

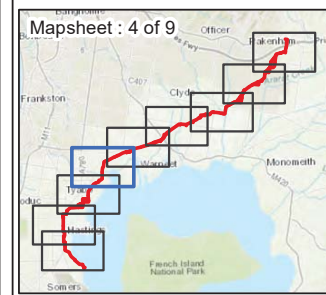
APA Group
 Hydrological and Hydrogeological Assessment – Crib Point to Pakenham Pipeline Project
 Westerport, VIC

Figure F7c





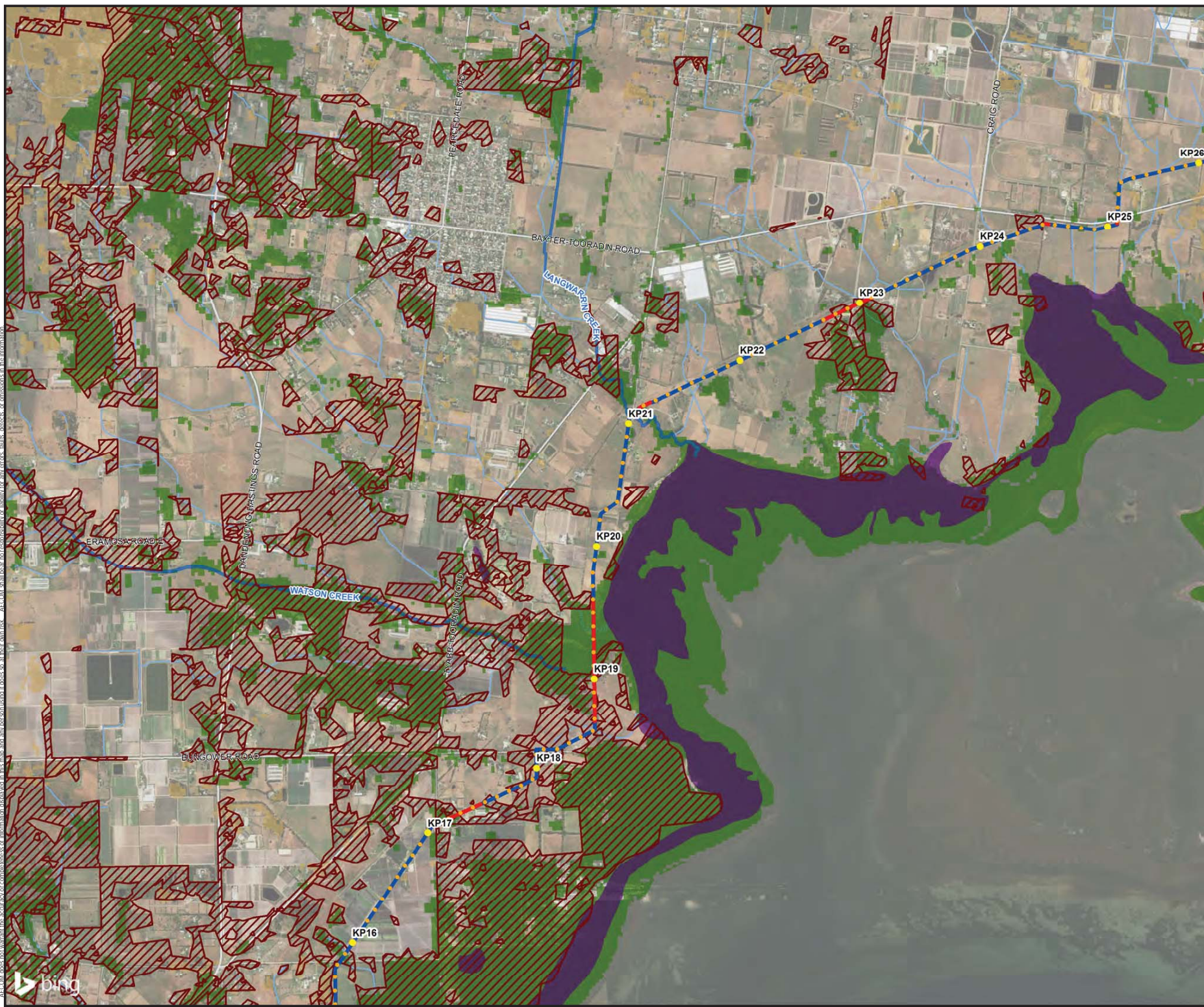
- LEGEND**
- Trench
 - Trenchless
 - Baimsdale-Melbourne Railway
 - Watercourses
 - Terrestrial Groundwater Dependent Ecosystems
- Aquatic GDE**
- Known GDE (regional studies)
 - High potential GDE (regional studies)
 - Moderate potential GDE (regional studies)
 - Low potential GDE (regional studies)
 - Unclassified potential GDE (regional studies)
 - High potential GDE (national assessment)
 - Moderate potential GDE (national assessment)
- Terrestrial GDE**
- High potential GDE (national assessment)
 - Moderate potential GDE (national assessment)
 - Low potential GDE (national assessment)

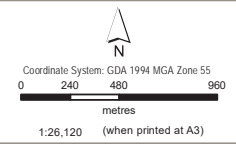


Groundwater Dependant Ecosystems

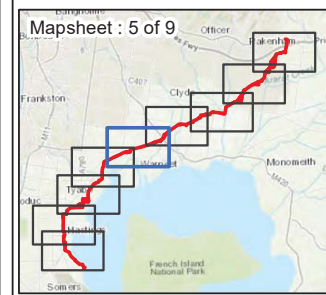
APA Group
 Hydrological and Hydrogeological Assessment – Crib Point to Pakenham Pipeline Project
 Westerport, VIC

Figure
F7d





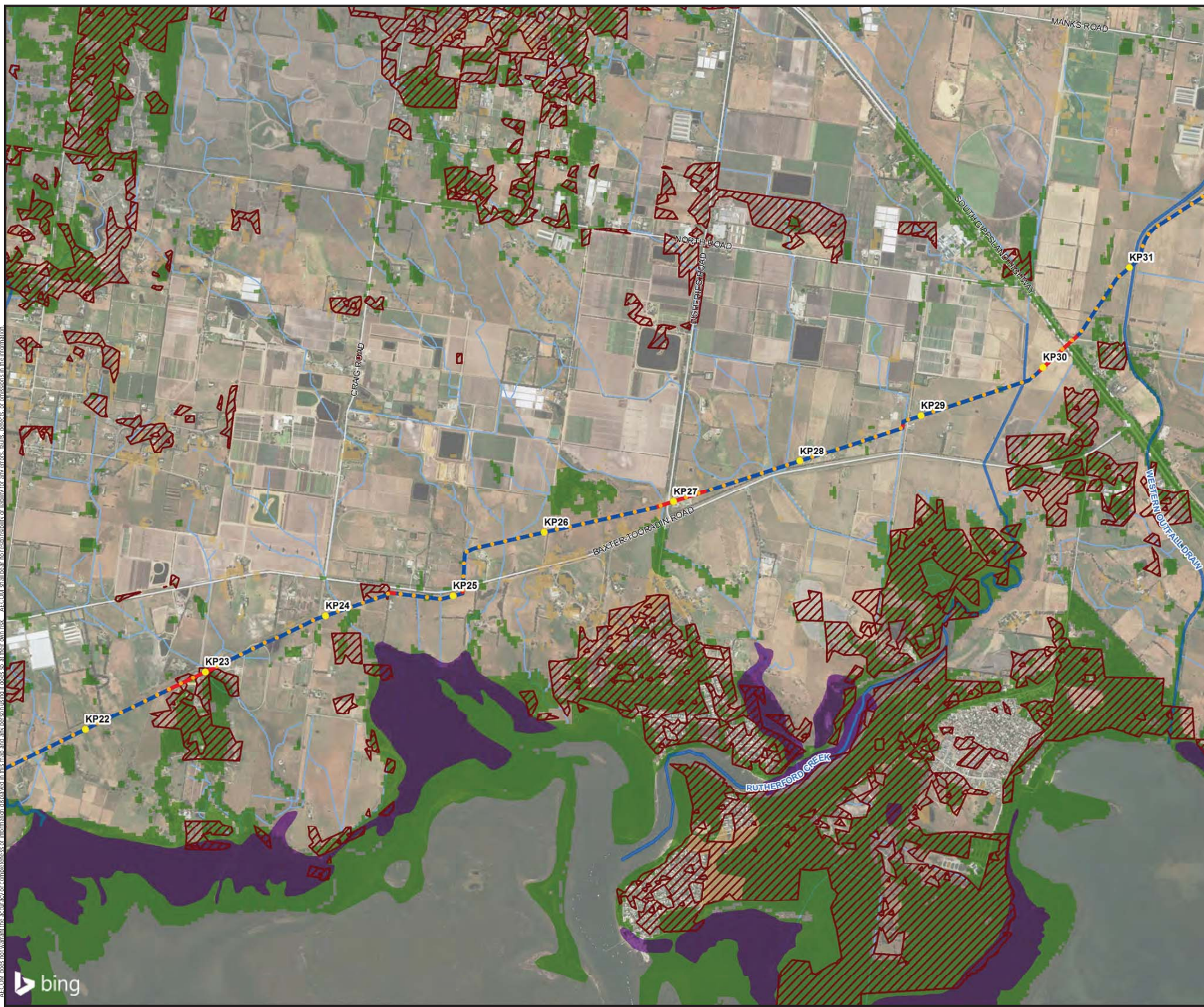
- LEGEND**
- Trench
 - Trenchless
 - Bairnsdale-Melbourne Railway
 - Watercourses
 - Terrestrial Groundwater Dependent Ecosystems
- Aquatic GDE**
- Known GDE (regional studies)
 - High potential GDE (regional studies)
 - Moderate potential GDE (regional studies)
 - Low potential GDE (regional studies)
 - Unclassified potential GDE (regional studies)
 - High potential GDE (national assessment)
 - Moderate potential GDE (national assessment)
- Terrestrial GDE**
- High potential GDE (national assessment)
 - Moderate potential GDE (national assessment)
 - Low potential GDE (national assessment)

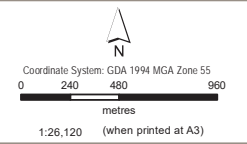


Groundwater Dependant Ecosystems

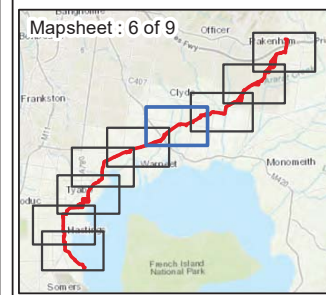
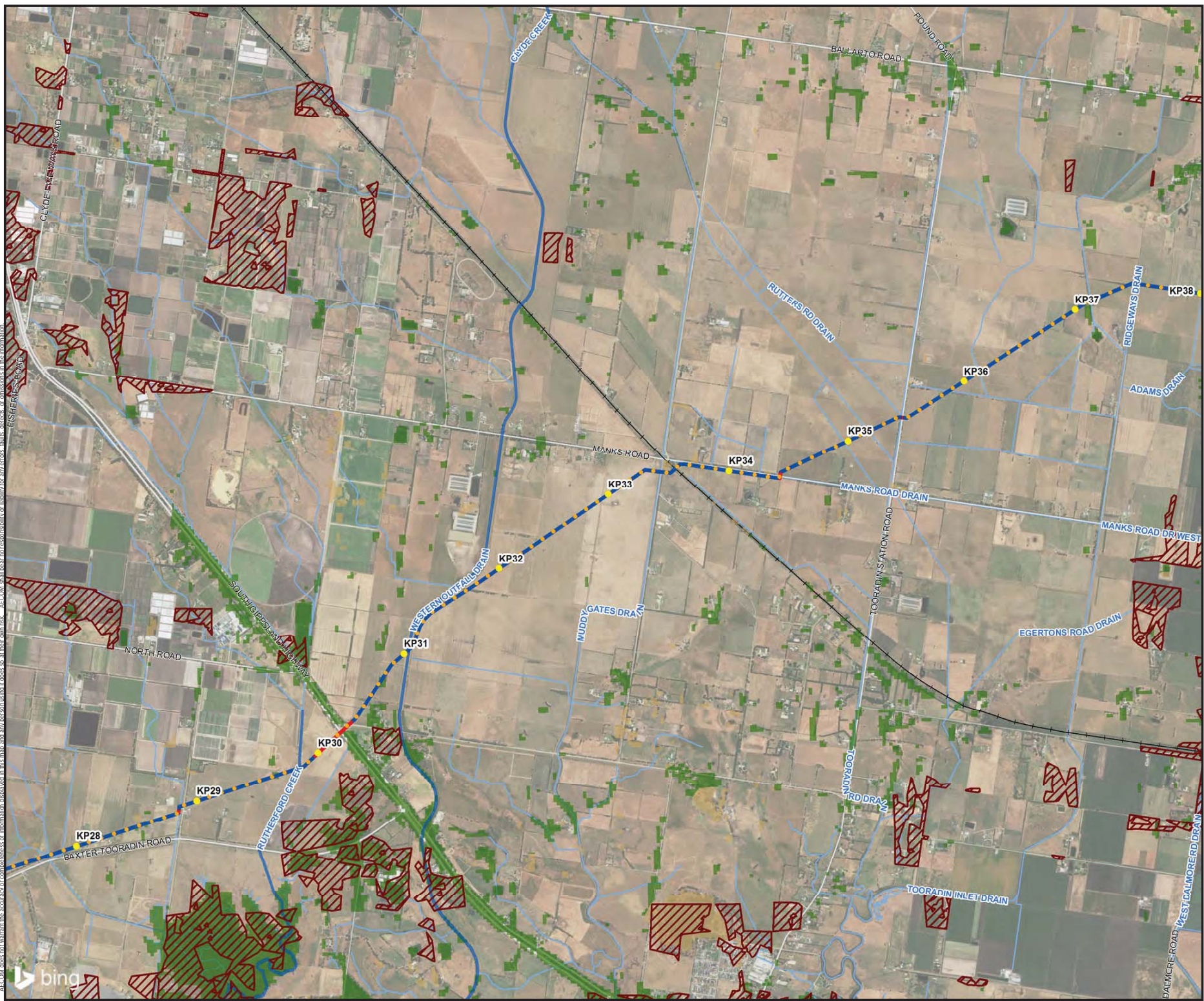
APA Group
 Hydrological and Hydrogeological Assessment – Crib Point to Pakenham Pipeline Project
 Westerport, VIC

Figure
F7e



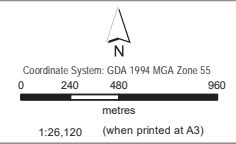


- LEGEND**
- Trench
 - Trenchless
 - Baimsdale-Melbourne Railway
 - Watercourses
 - Terrestrial Groundwater Dependent Ecosystems
- Aquatic GDE**
- Known GDE (regional studies)
 - High potential GDE (regional studies)
 - Moderate potential GDE (regional studies)
 - Low potential GDE (regional studies)
 - Unclassified potential GDE (regional studies)
 - High potential GDE (national assessment)
 - Moderate potential GDE (national assessment)
- Terrestrial GDE**
- High potential GDE (national assessment)
 - Moderate potential GDE (national assessment)
 - Low potential GDE (national assessment)

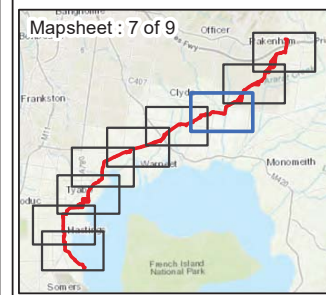


Groundwater Dependent Ecosystems

Map Document: (l:\aem\1p003.au.aecomnet.com\groups\WTRISpatial\Sys\Projects\2018\CPT_Geo\02_Maps\F7_GDE.mxd)



- LEGEND**
- Trench
 - Trenchless
 - Baimsdale-Melbourne Railway
 - Watercourses
 - ▨ Terrestrial Groundwater Dependent Ecosystems
- Aquatic GDE**
- ▨ Known GDE (regional studies)
 - ▨ High potential GDE (regional studies)
 - ▨ Moderate potential GDE (regional studies)
 - ▨ Low potential GDE (regional studies)
 - ▨ Unclassified potential GDE (regional studies)
 - ▨ High potential GDE (national assessment)
 - ▨ Moderate potential GDE (national assessment)
- Terrestrial GDE**
- ▨ High potential GDE (national assessment)
 - ▨ Moderate potential GDE (national assessment)
 - ▨ Low potential GDE (national assessment)

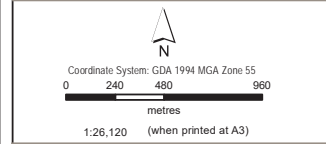


Groundwater Dependant Ecosystems

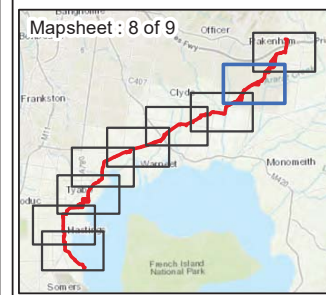
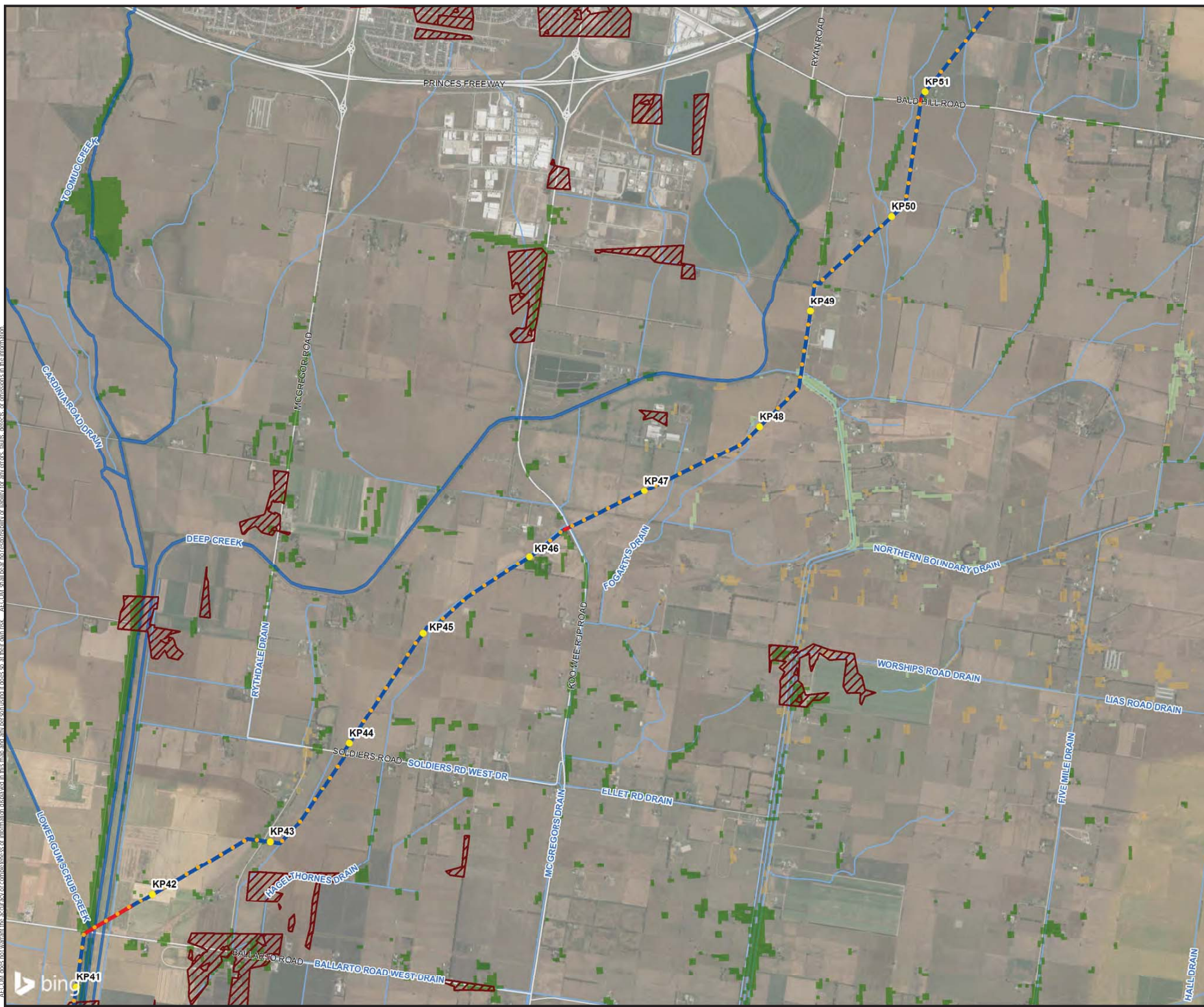
APA Group
 Hydrological and Hydrogeological Assessment – Crib Point to Pakenham Pipeline Project
 Westport, VIC

Figure
F7g



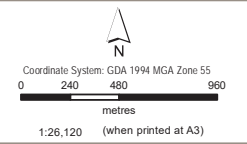


- LEGEND**
- Trench
 - Trenchless
 - Baimsdale-Melbourne Railway
 - Watercourses
 - ▨ Terrestrial Groundwater Dependent Ecosystems
- Aquatic GDE**
- ▨ Known GDE (regional studies)
 - ▨ High potential GDE (regional studies)
 - ▨ Moderate potential GDE (regional studies)
 - ▨ Low potential GDE (regional studies)
 - ▨ Unclassified potential GDE (regional studies)
 - ▨ High potential GDE (national assessment)
 - ▨ Moderate potential GDE (national assessment)
- Terrestrial GDE**
- ▨ High potential GDE (national assessment)
 - ▨ Moderate potential GDE (national assessment)
 - ▨ Low potential GDE (national assessment)

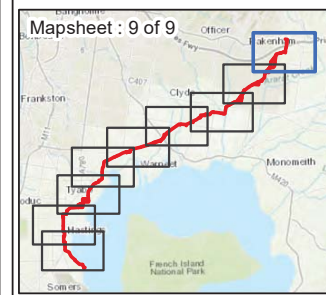
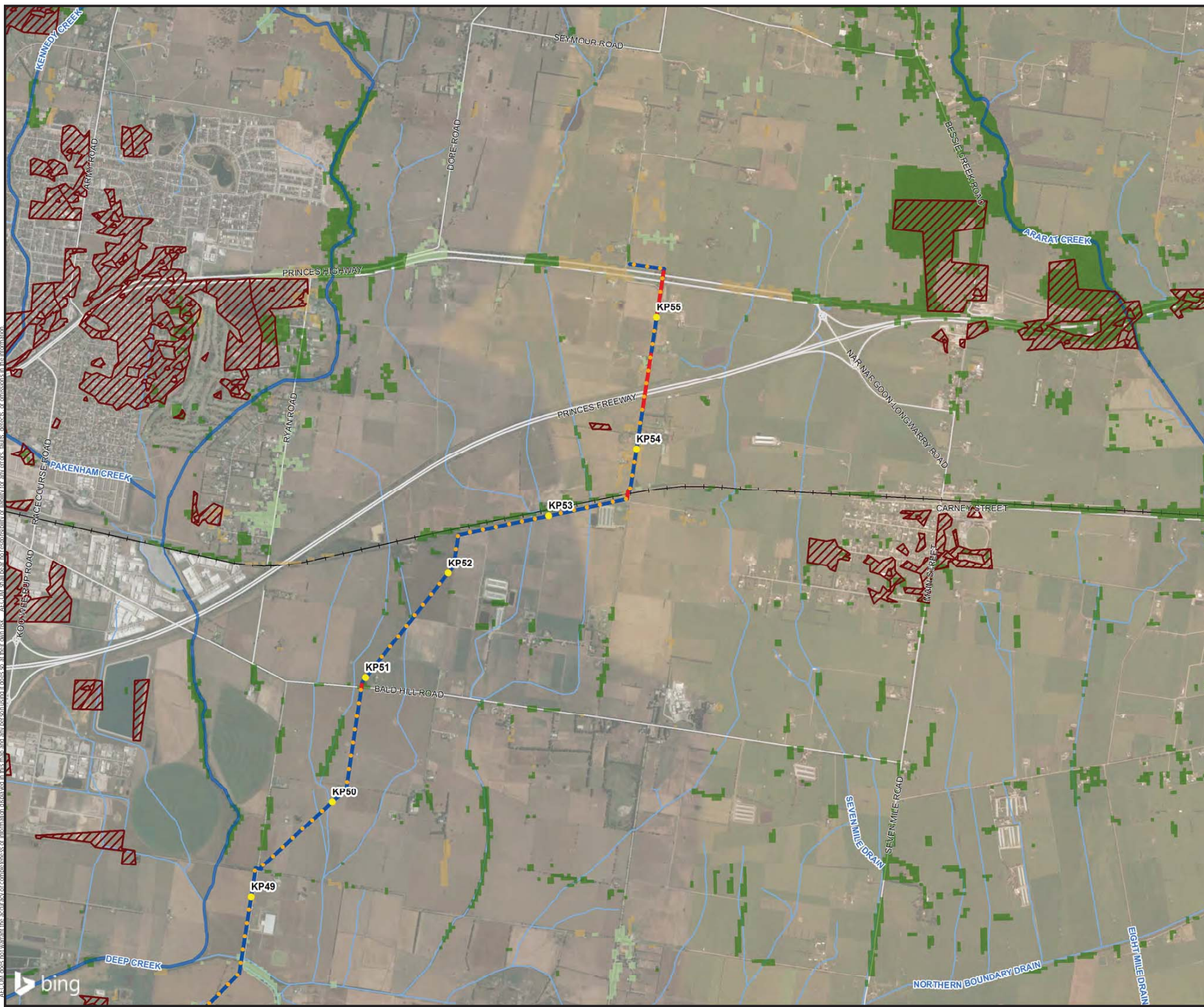


Groundwater Dependant Ecosystems

Map Document: (\\aume11p003.au.aecomnet.com\groups\WTRISpatial\Sys\Projects\2018\CPT_Geo\02_Maps\F7_GDE.mxd)



- LEGEND**
- Trench
 - Trenchless
 - Baimsdale-Melbourne Railway
 - Watercourses
 - Terrestrial Groundwater Dependent Ecosystems
- Aquatic GDE**
- Known GDE (regional studies)
 - High potential GDE (regional studies)
 - Moderate potential GDE (regional studies)
 - Low potential GDE (regional studies)
 - Unclassified potential GDE (regional studies)
 - High potential GDE (national assessment)
 - Moderate potential GDE (national assessment)
- Terrestrial GDE**
- High potential GDE (national assessment)
 - Moderate potential GDE (national assessment)
 - Low potential GDE (national assessment)



Groundwater Dependant Ecosystems