



APA Transmission Pty Limited
 Phone: +61 2 9693 0000
 Web: www.apa.com.au
 Email: cribpointpakenham@apa.com.au

PROJECT: CRIB POINT PAKENHAM PIPELINE

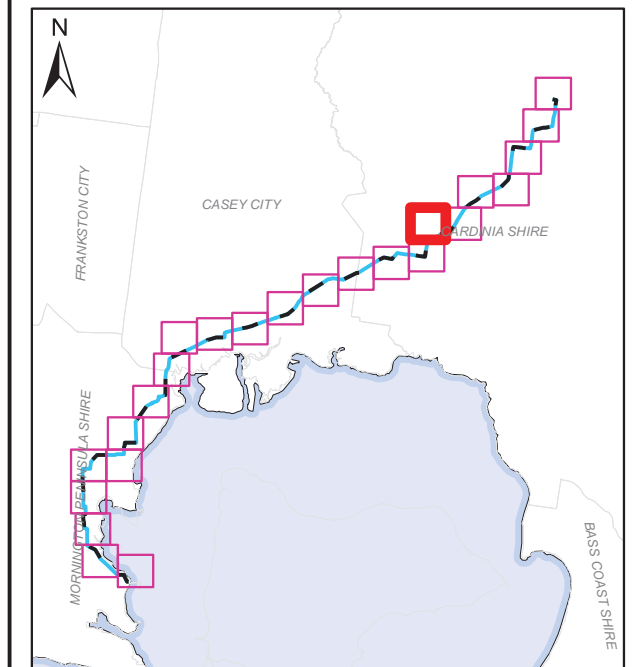
TITLE: Proposed Easements

SUBTITLE:




DATE: 4/09/2018

DATA SOURCE:

Service Layer Credits: Source: Esri, DigitalGlobe, GeoEye, Earthstar Geographics, CNES/Airbus DS, USDA, USGS, AeroGRID, IGN, and the GIS User Community
 Geoscience Australia 2016 Locations and Roads
 Copyright © The State of Victoria, Department of Environment, Land, Water & Planning 2018



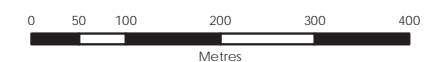
LEGEND

-  Easement
-  Affected Parcels
-  Crib Point/Pakenham Facility/MLV Area

ACCURATE AT DATE OF ISSUE

DOCUMENT NUMBER: CPT-MAP-L-0052 Page 18 of 24

Revision	Description	Drawn	Checked	QC	Approved	Date
0.2	DRAFT	MB	MF	JB	JB	04/09/18
0.1	DRAFT	MB	AR	JB	JB	21/08/18



SCALE: 1:8,000 @ A3 GDA 1994 MGA Zone 55

APA Group does not guarantee the accuracy or completeness of the map and does not make any warranty about the data. APA is not under any liability to the user for any loss or damage (including consequential loss or damage) which the user may suffer resulting from the use of this map. This map is confidential and the information and details contained in it are and remain the property of APA Group. © APA Group 2018.

\\pipeline\trust\apps\GIS\Projects\Crib_P1_Pakenham_Pipeline\Maps\CPT_MAP-L-0052_PipelineRoute_ProposedEasements_0.1.mxd - 04 Sep 2018 - matbec



APA Transmission Pty Limited
 Phone: +61 2 9693 0000
 Web: www.apa.com.au
 Email: cribpointpakenham@apa.com.au

PROJECT: CRIB POINT PAKENHAM PIPELINE

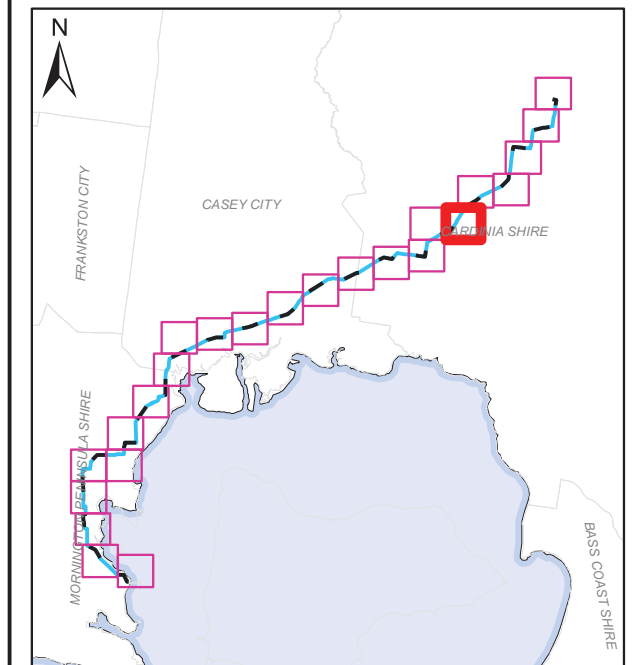
TITLE: Proposed Easements

SUBTITLE:

DATE: 4/09/2018

DATA SOURCE:

Service Layer Credits: Source: Esri, DigitalGlobe, GeoEye, Earthstar Geographics, CNES/Airbus DS, USDA, USGS, AeroGRID, IGN, and the GIS User Community
 Geoscience Australia 2016 Locations and Roads
 Copyright © The State of Victoria, Department of Environment, Land, Water & Planning 2018



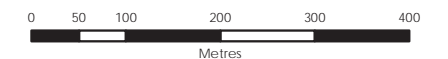
LEGEND

- Easement
- Affected Parcels
- Crib Point/Pakenham Facility/MLV Area

ACCURATE AT DATE OF ISSUE

DOCUMENT NUMBER: CPT-MAP-L-0052 Page 19 of 24

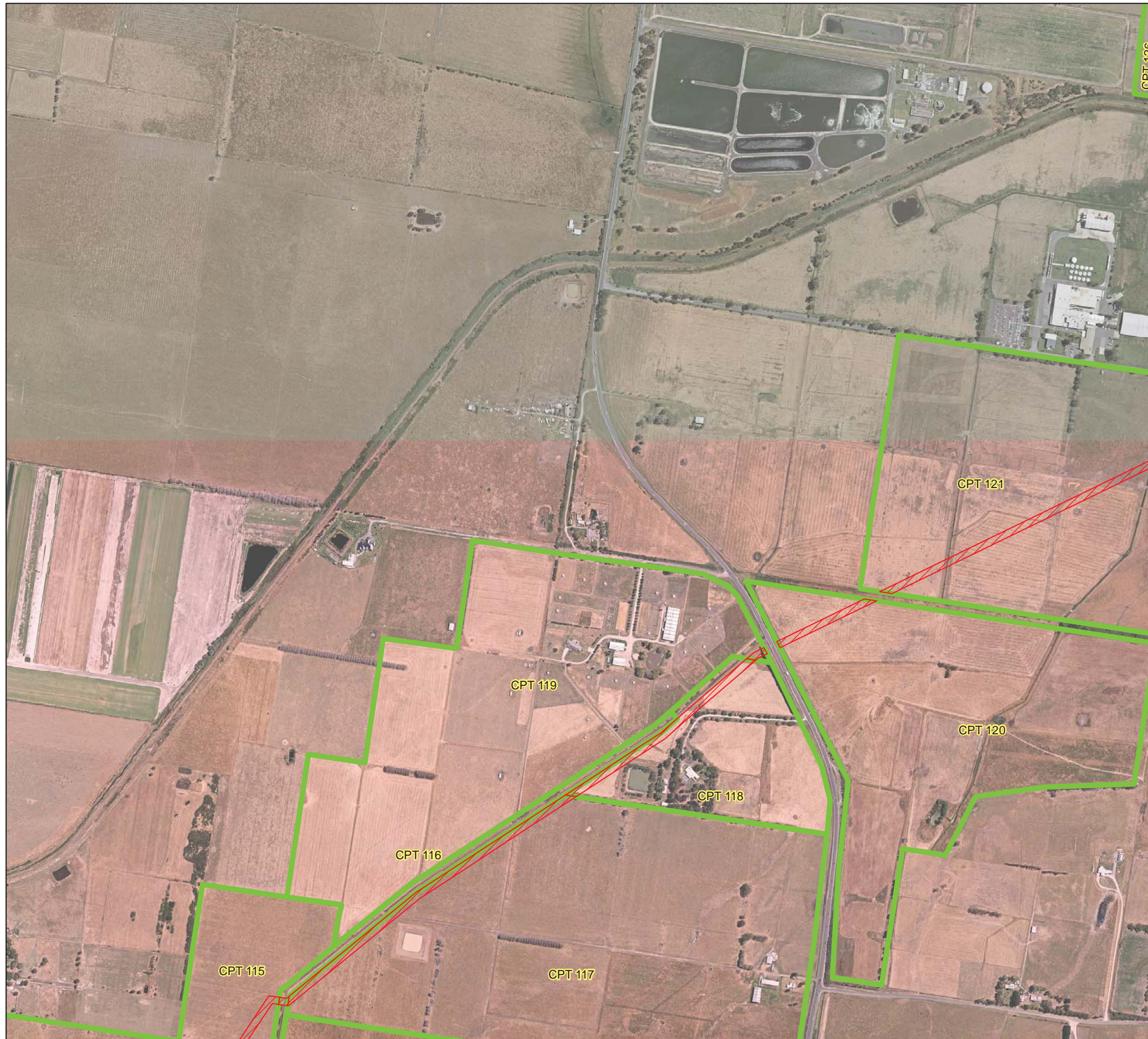
Revision	Description	Drawn	Checked	QC	Approved	Date
0.2	DRAFT	MB	MF	JB	JB	04/09/18
0.1	DRAFT	MB	AR	JB	JB	21/08/18



SCALE: 1:8,000 @ A3 GDA 1994 MGA Zone 55

APA Group does not guarantee the accuracy or completeness of the map and does not make any warranty about the data. APA is not under any liability to the user for any loss or damage (including consequential loss or damage) which the user may suffer resulting from the use of this map. This map is confidential and the information and details contained in it are and remain the property of APA Group. © APA Group 2018.

\\pipeline\trust\apps\GIS\Projects\Crib_P1_Pakenham_Pipeline\Maps\CPT_MAP-L-0052_PipelineRoute_ProposedEasements_0.1.mxd - 04 Sep 2018 - matbec



APA Transmission Pty Limited
 Phone: +61 2 9693 0000
 Web: www.apa.com.au
 Email: cribpointpakenham@apa.com.au



PROJECT: CRIB POINT PAKENHAM PIPELINE

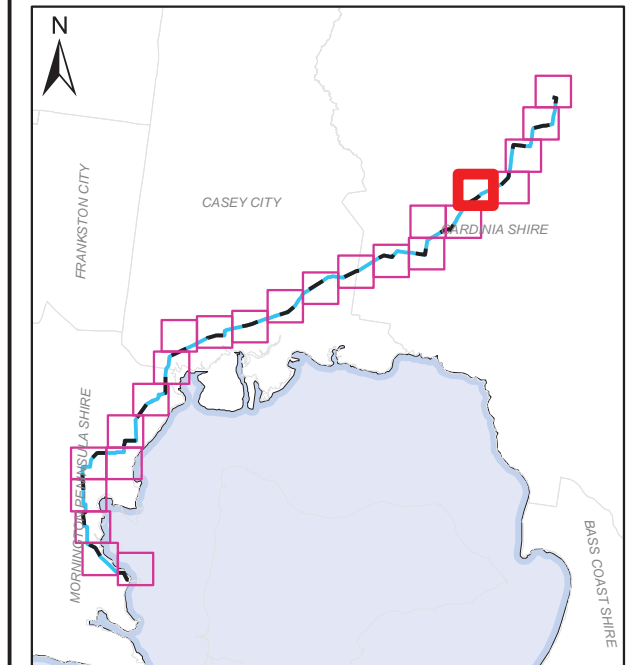
TITLE: Proposed Easements

SUBTITLE:

DATE: 4/09/2018

DATA SOURCE:

Service Layer Credits: Source: Esri, DigitalGlobe, GeoEye, Earthstar Geographics, CNES/Airbus DS, USDA, USGS, AeroGRID, IGN, and the GIS User Community
 Geoscience Australia 2016 Locations and Roads
 Copyright © The State of Victoria, Department of Environment, Land, Water & Planning 2018



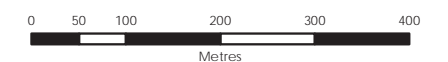
LEGEND

- Easement
- Affected Parcels
- Crib Point/Pakenham Facility/MLV Area

ACCURATE AT DATE OF ISSUE

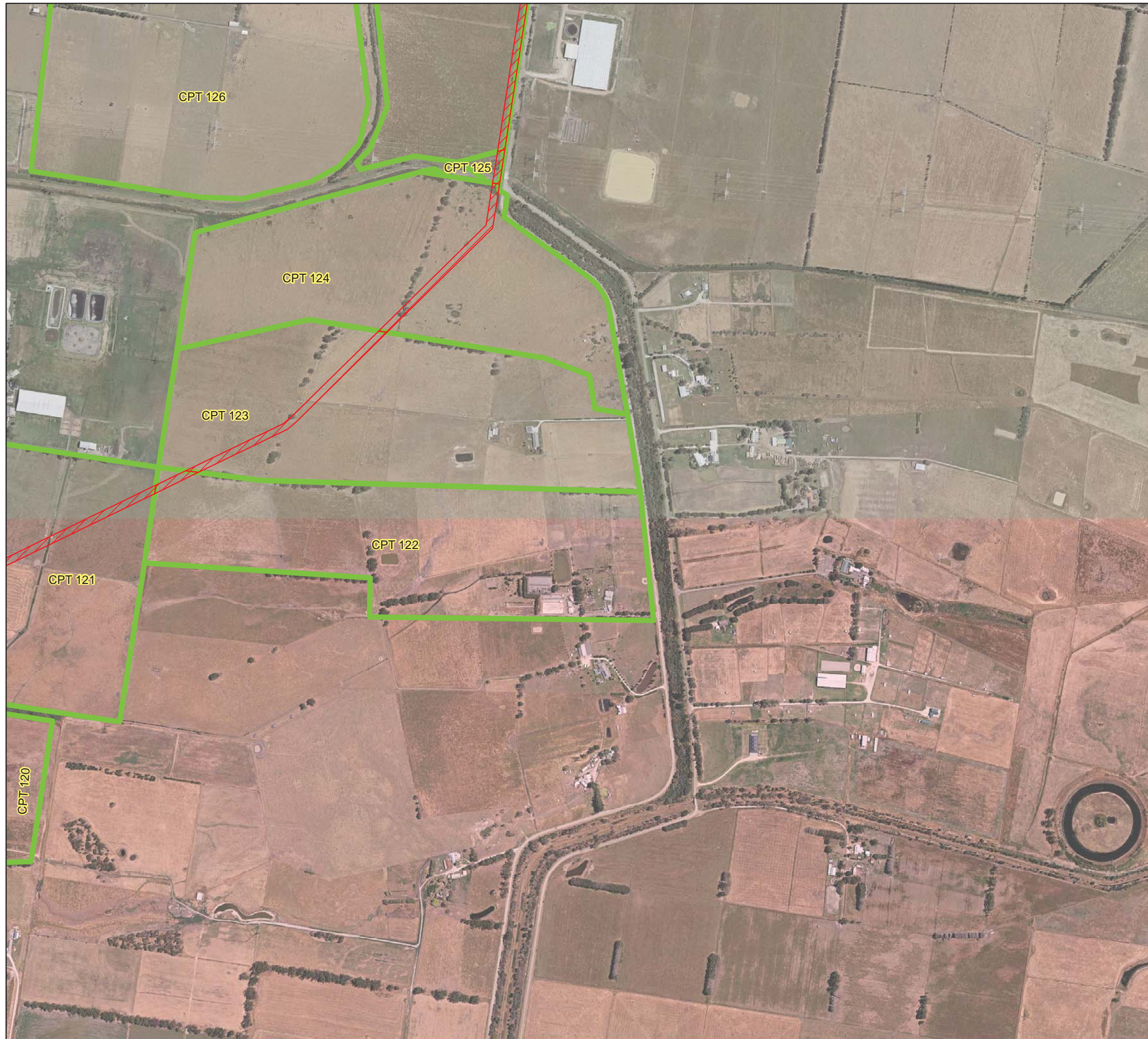
DOCUMENT NUMBER: CPT-MAP-L-0052 Page 20 of 24

Revision	Description	Drawn	Checked	QC	Approved	Date
0.2	DRAFT	MB	MF	JB	JB	04/09/18
0.1	DRAFT	MB	AR	JB	JB	21/08/18



SCALE: 1:8,000 @ A3 GDA 1994 MGA Zone 55

APA Group does not guarantee the accuracy or completeness of the map and does not make any warranty about the data. APA is not under any liability to the user for any loss or damage (including consequential loss or damage) which the user may suffer resulting from the use of this map. This map is confidential and the information and details contained in it are and remain the property of APA Group. © APA Group 2018.



APA Transmission Pty Limited
 Phone: +61 2 9693 0000
 Web: www.apa.com.au
 Email: cribpointpakenham@apa.com.au

PROJECT: CRIB POINT PAKENHAM PIPELINE

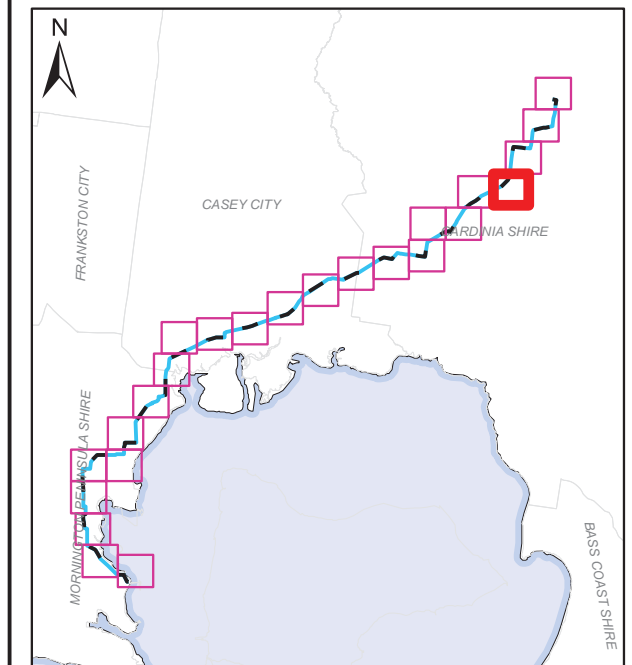
TITLE: Proposed Easements

SUBTITLE:

DATE: 4/09/2018

DATA SOURCE:

Service Layer Credits: Source: Esri, DigitalGlobe, GeoEye, Earthstar Geographics, CNES/Airbus DS, USDA, USGS, AeroGRID, IGN, and the GIS User Community
 Geoscience Australia 2016 Locations and Roads
 Copyright © The State of Victoria, Department of Environment, Land, Water & Planning 2018



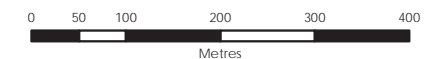
LEGEND

- Easement
- Affected Parcels
- Crib Point/Pakenham Facility/MLV Area

ACCURATE AT DATE OF ISSUE

DOCUMENT NUMBER: CPT-MAP-L-0052 Page 21 of 24

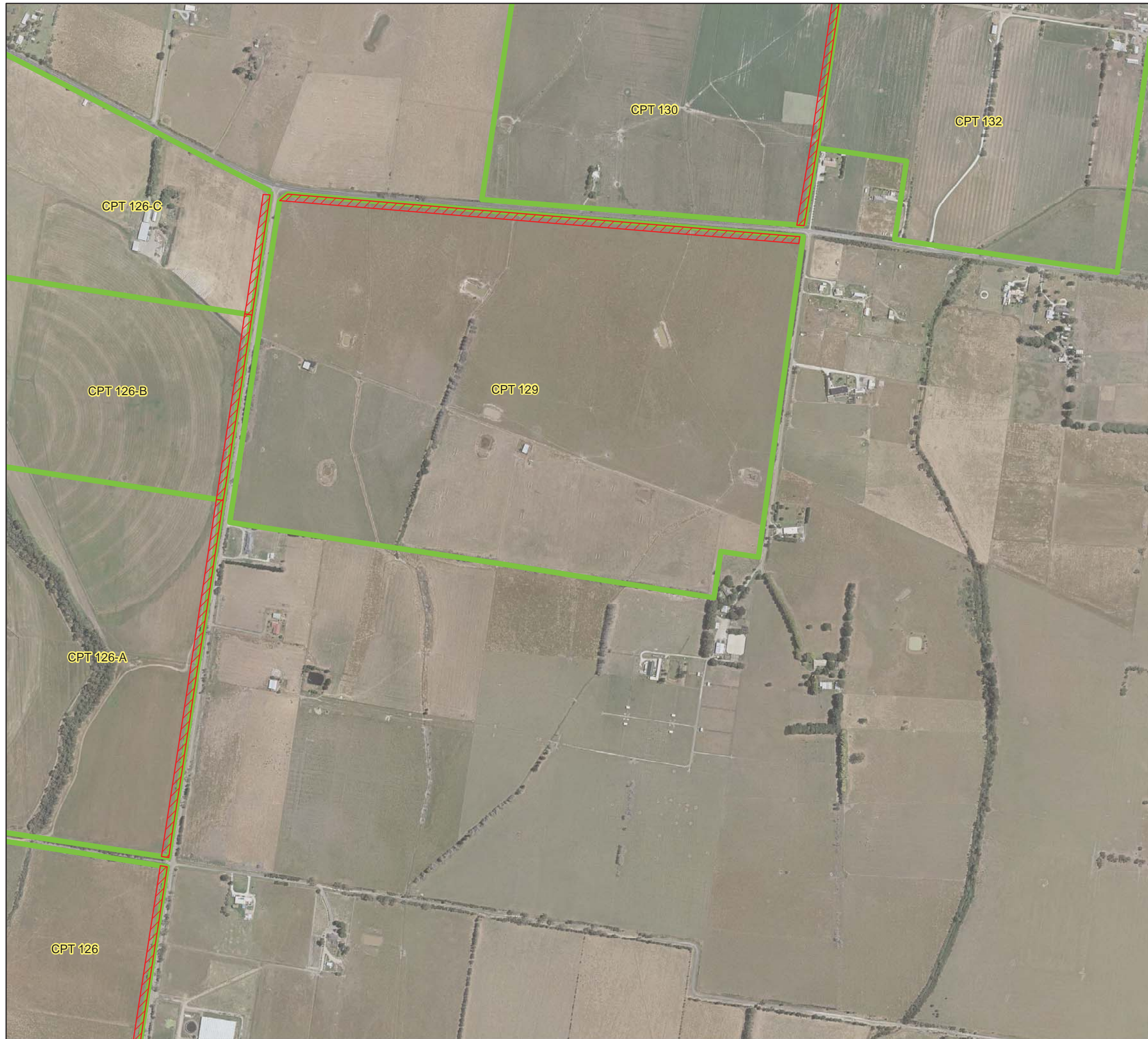
Revision	Description	Drawn	Checked	QC	Approved	Date
0.2	DRAFT	MB	MF	JB	JB	04/09/18
0.1	DRAFT	MB	AR	JB	JB	21/08/18



SCALE: 1:8,000 @ A3 GDA 1994 MGA Zone 55

APA Group does not guarantee the accuracy or completeness of the map and does not make any warranty about the data. APA is not under any liability to the user for any loss or damage (including consequential loss or damage) which the user may suffer resulting from the use of this map. This map is confidential and the information and details contained in it are and remain the property of APA Group. © APA Group 2018.

\\pipeline\trust\apps\GIS\Projects\Pipeline\Pakenham_Pipeline_Maps\CPT_MAP-L-0052_PipelineRoute_ProposedEasements_0.1.mxd - 04 Sep 2018 - matbec



APA Transmission Pty Limited
 Phone: +61 2 9693 0000
 Web: www.apa.com.au
 Email: cribpointpakenham@apa.com.au

PROJECT: CRIB POINT PAKENHAM PIPELINE

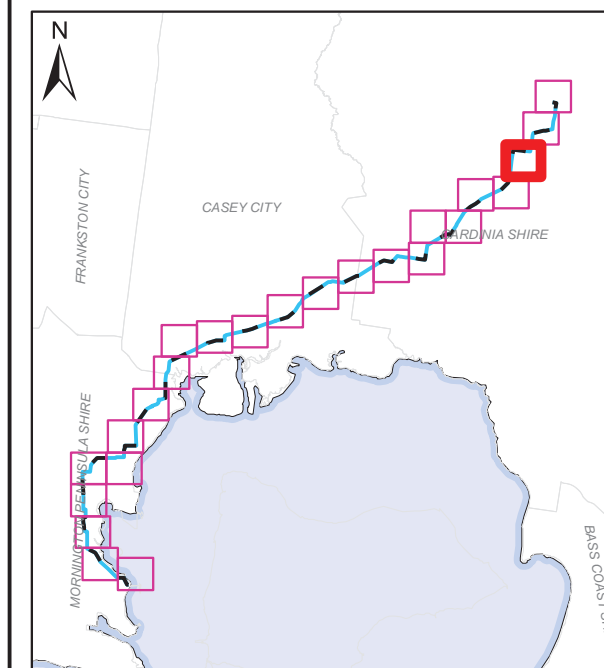
TITLE: Proposed Easements

SUBTITLE:

DATE: 4/09/2018

DATA SOURCE:

Service Layer Credits: Source: Esri, DigitalGlobe, GeoEye, Earthstar Geographics, CNES/Airbus DS, USDA, USGS, AeroGRID, IGN, and the GIS User Community
 Geoscience Australia 2016 Locations and Roads
 Copyright © The State of Victoria, Department of Environment, Land, Water & Planning 2018



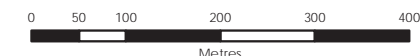
LEGEND

- Easement
- Affected Parcels
- Crib Point/Pakenham Facility/MLV Area

ACCURATE AT DATE OF ISSUE

DOCUMENT NUMBER: CPT-MAP-L-0052 Page 22 of 24

Revision	Description	Drawn	Checked	QC	Approved	Date
0.2	DRAFT	MB	MF	JB	JB	04/09/18
0.1	DRAFT	MB	AR	JB	JB	21/08/18



SCALE: 1:8,000 @ A3 GDA 1994 MGA Zone 55

APA Group does not guarantee the accuracy or completeness of the map and does not make any warranty about the data. APA is not under any liability to the user for any loss or damage (including consequential loss or damage) which the user may suffer resulting from the use of this map. This map is confidential and the information and details contained in it are and remain the property of APA Group. © APA Group 2018.

\\pipeline\trust\apps\GIS\Projects\Pipeline\Pakenham_Pipeline_Maps\CPT-MAP-L-0052_PipelineRoute_ProposedEasements_0.1.mxd - 04 Sep 2018 - matbec



APA Transmission Pty Limited
 Phone: +61 2 9693 0000
 Web: www.apa.com.au
 Email: cribpointpakenham@apa.com.au

PROJECT: CRIB POINT PAKENHAM PIPELINE

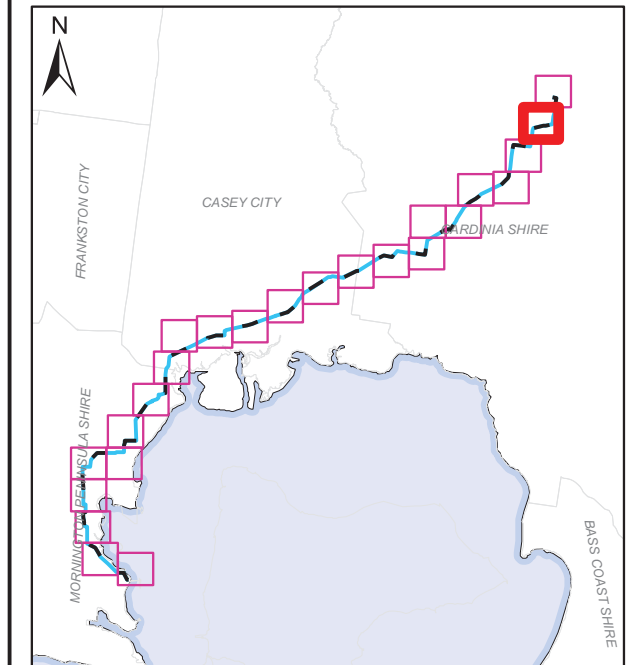
TITLE: Proposed Easements

SUBTITLE:

DATE: 4/09/2018

DATA SOURCE:

Service Layer Credits: Source: Esri, DigitalGlobe, GeoEye, Earthstar Geographics, CNES/Airbus DS, USDA, USGS, AeroGRID, IGN, and the GIS User Community
 Geoscience Australia 2016 Locations and Roads
 Copyright © The State of Victoria, Department of Environment, Land, Water & Planning 2018



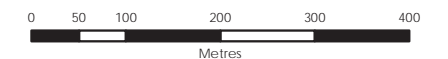
LEGEND

- Easement
- Affected Parcels
- Crib Point/Pakenham Facility/MLV Area

ACCURATE AT DATE OF ISSUE

DOCUMENT NUMBER: CPT-MAP-L-0052 Page 23 of 24

Revision	Description	Drawn	Checked	QC	Approved	Date
0.2	DRAFT	MB	MF	JB	JB	04/09/18
0.1	DRAFT	MB	AR	JB	JB	21/08/18



SCALE: 1:8,000 @ A3 GDA 1994 MGA Zone 55

APA Group does not guarantee the accuracy or completeness of the map and does not make any warranty about the data. APA is not under any liability to the user for any loss or damage (including consequential loss or damage) which the user may suffer resulting from the use of this map. This map is confidential and the information and details contained in it are and remain the property of APA Group. © APA Group 2018.

\\pipeline\trust\apps\GIS\Projects\Crib_P1_Pakenham_Pipeline\Maps\CPT_MAP-L-0052_PipelineRoute_ProposedEasements_01.mxd - 04 Sep 2018 - matbec



APA Transmission Pty Limited
 Phone: +61 2 9693 0000
 Web: www.apa.com.au
 Email: cribpointpakenham@apa.com.au

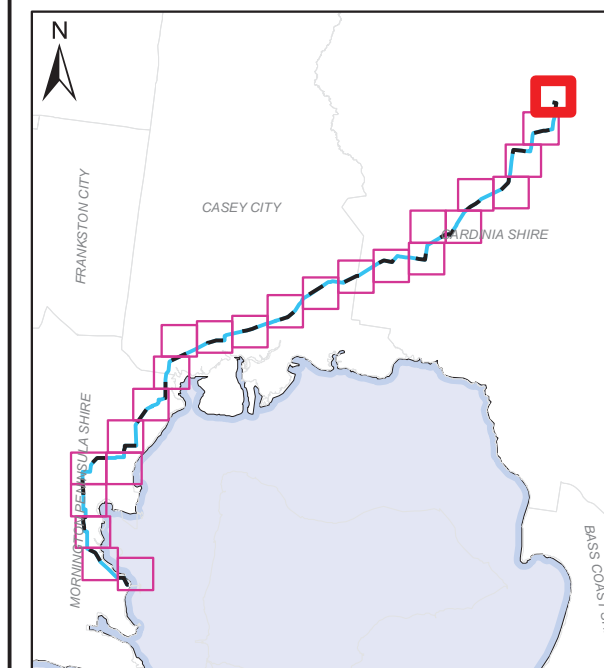
PROJECT: CRIB POINT PAKENHAM PIPELINE

TITLE: Proposed Easements

SUBTITLE:

DATE: 4/09/2018

DATA SOURCE:
 Service Layer Credits: Source: Esri, DigitalGlobe, GeoEye, Earthstar
 Geographics, CNES/Airbus DS, USDA, USGS, AeroGRID, IGN, and the GIS User
 Community
 Geoscience Australia 2016 Locations and Roads
 Copyright © The State of Victoria, Department of Environment, Land, Water &
 Planning 2018

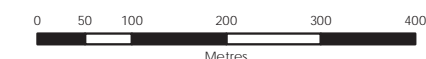


- LEGEND**
- Easement
 - Affected Parcels
 - Crib Point/Pakenham Facility/MLV Area

**ACCURATE AT
DATE OF ISSUE**

DOCUMENT NUMBER: CPT-MAP-L-0052 Page 24 of 24

Revision	Description	Drawn	Checked	QC	Approved	Date
0.2	DRAFT	MB	MF	JB	JB	04/09/18
0.1	DRAFT	MB	AR	JB	JB	21/08/18



SCALE: 1:8,000 @ A3 GDA 1994 MGA Zone 55

APA Group does not guarantee the accuracy or completeness of the map and does not make any warranty about the data. APA is not under any liability to the user for any loss or damage (including consequential loss or damage) which the user may suffer resulting from the use of this map. This map is confidential and the information and details contained in it are and remain the property of APA Group. © APA Group 2018.

\\pipeline\trust\apps\GIS\Projects\Crib_P1_Pakenham_Pipeline\Maps\CPT-MAP-L-0052_PipelineRoute_ProposedEasements_0.1.mxd - 04 Sep 2018 - matbec