



Approval

Tellus Chandler Salt Mine Project, south of Alice Springs, Northern Territory (EPBC 2012/6684)

This decision is made under sections 130(1) and 133 of the *Environment Protection and Biodiversity Conservation Act 1999*.

Proposed action

person to whom the approval is granted Tellus Holdings Ltd

proponent's ACN 138 119 829

proposed action To construct and operate a multi-mineral underground salt mine and complementary storage facility approximately 120 km south of Alice Springs, including the construction and operation of a mine salt processing plant and supply chain infrastructure (haul and access roads, rail siding and power station) [See EPBC Act referral 2012/6684].

Approval decision

Controlling Provision	Decision
Listed threatened species and communities (sections 18 & 18A)	Approve

conditions of approval

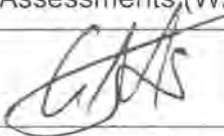
conditions of approval

This approval is subject to the conditions specified below.

expiry date of approval

31 December 2053

Decision-maker

name and position	Gregory Manning Assistant Secretary Assessments, (WA, SA, NT) and Post Approvals Branch
signature	
date of decision	5 August 2018 September

Conditions attached to the approval

1. To minimise impacts to **EPBC Act listed species**, the **approval holder** must clear no more than the following in the **Chandler Salt Mine Development Envelope** (Attachment A):
 - a) 159.42 ha of **suitable habitat** for the **Crest-tailed Mulgara**;
 - b) 286.26 ha of **suitable habitat** for the **Princess Parrot**;
 - c) 75.11 ha of **suitable habitat** for the **Great Desert Skink**.
2. To minimise impacts to **EPBC Act listed species**, the **approval holder** must implement the following recommendations of the **Northern Territory assessment report**.
 - a) Recommendation 3 – waste acceptance
 - b) Recommendation 6 – site specific risk assessment
 - c) Recommendation 9 – Water Management Plan
 - d) Recommendation 10 – Groundwater assessment
3. To minimise impacts to **EPBC Act listed species**, the **approval holder** must implement a sign-posted speed limit of no greater than 60 km/hr along the **Chandler Haul Road** and **Henbury Access Road** in the **Chandler Salt Mine Development Envelope** (Attachment A). Other than for emergency purposes, vehicle movements must be limited to daylight hours.
4. To minimise impacts to **EPBC Act listed species**, the **approval holder** must prepare and submit a Biodiversity Management Plan (BMP) to the **Department** for approval by the **Minister**. The BMP must include:
 - a) the requirements described in Recommendation 12 of the **Northern Territory assessment report** (with the exception of pre-clearance surveys for the Slater's Skink and Thick-billed Grasswren);
 - b) weed, fire and pest fauna management measures consistent with Table 7-11 of the **Chandler Facility Environmental Impact Statement Draft Report (February 2017)** (Attachment B);
 - c) details of a monitoring program that is consistent with the **Survey Guidelines for Australia's Threatened Birds (2010)**, **Survey Guidelines for Australia's Threatened Mammals (2011)** and **Survey Guidelines for Australia's Threatened Reptiles (2011)**

to assess the effectiveness of the measures in condition 4(a) and 4(b) in minimising impacts to EPBC Act listed species; and

- d) triggers and indicative contingency measures for implementation in the event that the management measures in condition 4(a) and 4(b) are not effective in minimising impacts to **EPBC Act listed species**.

Construction must not **commence** unless the **Minister** has approved the BMP. The approved BMP must be implemented.

- 5. If the **Princess Parrot** is detected in pre-clearance surveys under condition 4(a), the approval holder must not **commence** the action unless the **approval holder** has submitted a Species Management Plan (SMP) to the **Minister** for approval; and the **Minister** has approved the SMP. The SMP must:

- a) describe how potential impacts to the **Princess Parrot** will be avoided, mitigated and offset in accordance with the **Department's EPBC Act Environmental Offsets Policy (2012)**.

If the **Minister** approves the SMP required under this condition, the **approval holder** must implement the SMP.

- 6. To minimise impacts to **EPBC Act listed species**, the **approval holder** must prepare and submit an Erosion and Sediment Control Plan (ESCP) to the **Department** for approval by the **Minister** prior to the **commencement** of **construction**. The ESCP must:

- a) include the requirements of Recommendation 8 of the **Northern Territory assessment report**;
- b) include details of the timing and duration of **clearance** of suitable habitat for **EPBC Act listed species**;
- c) include measures to manage stormwater flows including external catchment contributions, site drainage and the separation of run off and mine/process waters;
- d) include details of channel and surface protection/stabilisation, sediment control traps, filters/basins and revegetation; and
- e) identify the location of salt stockpiles and measures to avoid impacts to habitat for **EPBC Act listed species** from salt run off.

Construction must not **commence** until the **Minister** has approved the ESCP. The approved ESCP must be implemented.

- 7. Within 30 days after the **commencement** of the action, the **approval holder** must advise the **Department** in writing of the actual date of **commencement**.
- 8. The **approval holder** must maintain accurate records substantiating all activities associated with or relevant to the conditions of approval, including measures taken to implement the management plans and monitoring programs required by this approval, and make them available upon request to the **Department**. Such records may be subject to audit by the **Department** or an independent auditor in accordance with section 458 of the **EPBC Act**, or used to verify compliance with the conditions of approval. Summaries of audits will be posted on the **Department's** website. The results of audits may also be publicised through the general media.

9. Within three months of every 12 month anniversary of the **commencement** of the action, the **approval holder** must publish a report on their website addressing compliance with each of the conditions of this approval, including implementation of any management plans as specified in the conditions. Documentary evidence providing proof of the date of publication and non-compliance with any of the conditions of this approval must be provided to the **Department** at the same time as the compliance report is published.
10. Upon the direction of the **Minister**, the **approval holder** must ensure that an independent audit of compliance with the conditions of approval is conducted and a report submitted to the **Minister**. The independent auditor must be approved by the **Minister** prior to the commencement of the audit. Audit criteria must be agreed to by the **Minister** and the audit report must address the criteria to the satisfaction of the **Minister**.
11. The **approval holder** may choose to revise a plan or program approved by the **Minister** under conditions 4, 5 and 6 without submitting it for approval under section 143A of the EPBC Act, if the taking of the action in accordance with the revised plan would not be likely to have a **new or increased impact**. If the person taking the action makes this choice they must notify the **Department** in writing that the approved plan has been revised and provide the **Department**, at least 20 business days before implementing the revised plan, with:
- i. an electronic copy of the revised plan;
 - ii. an explanation of the differences between the revised plan and the approved plan; and
 - iii. the reasons the person taking the action considers that the taking of the action in accordance with the revised plan would not be likely to have a **new or increased impact**.
- 11A The **approval holder** may revoke its choice under condition 11 at any time by giving written notice to the **Department**. If the person taking the action revokes the choice to implement a revised plan, without approval under section 143A of the **EPBC Act**, the plan approved by the Minister must be implemented.
- 11B If the **Minister** gives a notice to the person taking the action that the **Minister** is satisfied that the taking of the action in accordance with the revised plan would be likely to have a **new or increased impact**, then:
- i. Condition 11 does not apply, or ceases to apply, in relation to the revised plan; and
 - ii. The **approval holder** must implement the plan or program approved by the **Minister**.
- To avoid any doubt, this condition does not affect any operation of conditions 11 and 11A in the period before the day the notice is given.
- At the time of giving the notice, the **Minister** may also notify that for a specified period of time that condition 11 does not apply for one or more specified plans required under the approval.
- 11C Conditions 10, 11A and 10B are not intended to limit the operation of section 143A of the **EPBC Act** which allows the person taking the action to submit a revised plan, program or strategy to the **Minister** for approval.
12. If, at any time after five years from the date of this approval, the **approval holder** has not substantially **commenced** the action, then the approval holder must not substantially **commence** the action without the written agreement of the **Minister**.

13. Unless otherwise agreed to in writing by the **Minister**, the **approval holder** must publish all plans and programs referred to in these conditions of approval on their website. Each plan and program must be published on the website within 1 month of being approved or being submitted under conditions 4, 5 and 6.

Definitions

Approval holder means the name of the person to whom the **approval** is granted.

Chandler Facility Environment Impact Statement Draft Report (February 2017) means the Chandler Facility Environment Impact Statement Draft Report (February 2017) on the Northern Territory Environment Protection Authority's website at <https://ntepa.nt.gov.au/environmental-assessments/register/chandler-facility/draft-eis>.

Chandler Haul Road means the **Chandler Haul Road** identified in the **Chandler Salt Mine Development Envelope** (Attachment A).

Chandler Salt Mine Development Envelope means the 'proposed development footprint' indicated in Attachment A.

Clearance of native vegetation means the cutting down, felling, thinning, logging, removing, killing, destroying, poisoning, ringbarking, uprooting or burning of native vegetation.

Commence, commencement and commenced means construction of any infrastructure, excluding fences and signage, associated with the proposed action.

Construction includes but is not limited to any preparatory works required to be undertaken including clearing vegetation, the erection of any onsite temporary structures and the use of heavy duty equipment for the purpose of breaking the ground for buildings or infrastructure.

Crest-tailed Mulgara means the **EPBC Act** listed Crest-tailed Mulgara (*Dasyercus cristicauda*).

Department means the Commonwealth Department of the Environment and Energy or any other agency that administers the **EPBC Act** from time to time and includes, where the context permits, the officers, delegates, employees and successors of the **Department**.

Department's EPBC Act Environmental Offsets Policy (2012) is the Environment Protection and Biodiversity Conservation Act 1999 Environmental Offsets Policy (October 2012), or subsequent revision, including the Offsets Assessment Guide. Available at:

<http://www.environment.gov.au/epbc/publications/epbc-act-environmental-offsets-policy>.

EPBC Act means the *Environment Protection and Biodiversity Conservation Act 1999 (Cth)*.

EPBC Act listed species means the EPBC Act listed Crest-tailed Mulgara (*Dasyercus cristicauda*), Slater's Skink (*Liopholis slateri*), Princess Parrot (*Polytelis alexandrae*), Thick-billed Grasswren (*Amytornis modestus*) and Great Desert Skink (*Liopholis kintorei*).

Great Desert Skink means the **EPBC Act** listed Great Desert Skink (*Liopholis kintorei*).

Henbury Access Road means the **Henbury Access Road** identified in the **Chandler Salt Mine Development Envelope** (Attachment A).

Minister means the Minister administering the **EPBC Act** including any delegate of the Minister.

New or increased impact means a new or increased impact on any matter protected by the controlling provisions for the action, when compared to the plan or program that has been approved by the Minister.

Northern Territory assessment report means the Environment Protection Authority (Northern Territory EPA) Assessment Report 83 (November 2017) signed by Dr Paul Vogel (Chairman, Northern Territory EPA) on 30 November 2017, as varied from time to time. Available from: https://ntepa.nt.gov.au/data/assets/pdf_file/0009/465435/assessment_report_chandler_facility.pdf

Princess Parrot means the **EPBC Act** listed Princess Parrot (*Polytelis alexandrae*).

Slater's Skink means the **EPBC Act** listed Slater's Skink (*Liopholis slateri*).

Suitable habitat for the Crest-tailed Mulgara means dune and sand plain habitat described in *The proposed Chandler Facility – Environmental Impact Statement Draft Report (February 2017)*.

Suitable habitat for the Great Desert Skink means alluvial plains as described in *The Proposed Chandler Facility – Environmental Impact Statement Draft Report (February 2017)*.

Suitable habitat for the Princess Parrot means dune fields, sand plains, riverine dunes/river, prominent hills and low ranges, alluvial plains and coolabah and lignum swamps as described in *The proposed Chandler Facility – Environmental Impact Statement Draft Report (February 2017)*.

Survey Guidelines for Australia's Threatened Birds (2010) means Commonwealth of Australia 2010. *Survey guidelines for Australia's threatened birds: guidelines for detecting birds listed as threatened under the Environment Protection and Biodiversity Conservation Act 1999*. Available from: <http://www.environment.gov.au/epbc/publications/survey-guidelines-australias-threatened-birds-guidelines-detecting-birds-listed-threatened>.

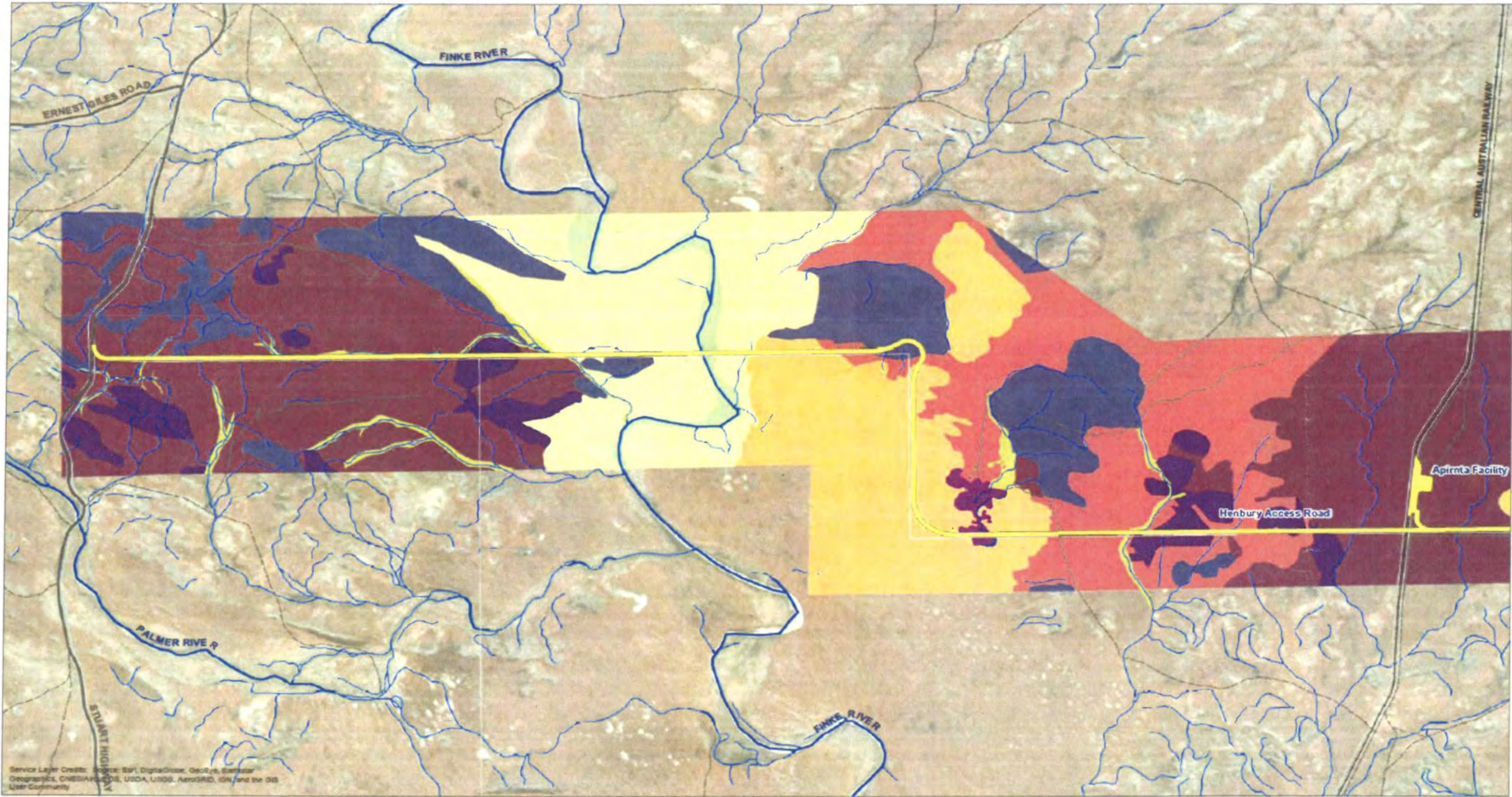
Survey guidelines for Australia's Threatened Mammals (2011) means Commonwealth of Australia 2011. *Survey guidelines for Australia's threatened mammals: Guidelines for detecting mammals listed as threatened under the Environment Protection and Biodiversity Conservation Act 1999*. Available from: <http://www.environment.gov.au/resource/survey-guidelines-australias-threatened-mammals-guidelines-detecting-mammals-listed>.

Survey Guidelines for Australia's Threatened Reptiles (2011) means Commonwealth of Australia 2011. *Survey guidelines for Australia's threatened reptiles: guidelines for detecting reptiles listed as threatened under the Environment Protection and Biodiversity Conservation Act 1999*. Available from: <http://www.environment.gov.au/resource/survey-guidelines-australias-threatened-reptiles-guidelines-detecting-reptiles-listed>.

Thick-billed Grasswren means the **EPBC Act** listed Thick-billed Grasswren (*Amytornis modestus*).



ATTACHMENT A: Chandler Salt Mine Development Envelope



Service Layer Credits: Source: Esri, DigitalGlobe, GeoEye, Earthstar Geographics, CNES/Airbus DS, USDA, USGS, AeroGRID, IGN, and the GIS User Community

Legend

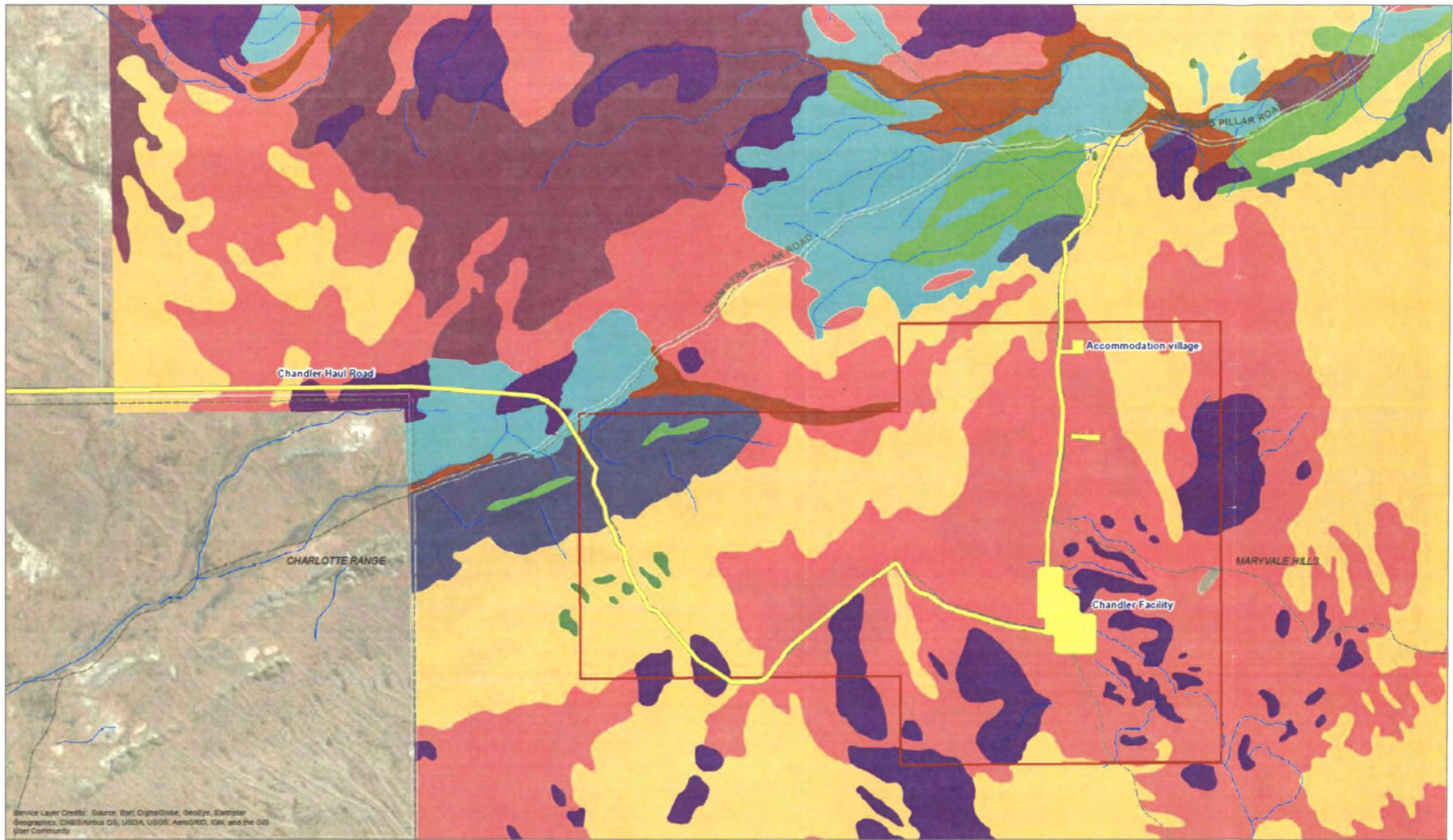
- Proposed development footprint
- Watercourse
- Habitat type**
- Alluvial plain (Great desert skink, Liopholis kintorei, Princess parrot, Polytelis alexandrae)
- Coolabah lignum swamp (Princess parrot, Polytelis alexandrae)
- Creeklime/drainage depression (Princess parrot, Polytelis alexandrae)
- Dune fields (Crest-tailed mulgara, Dasymercus cristicauda, Princess parrot, Polytelis alexandrae)
- Mesa terrain
- Plains
- Prominent hills and low ranges (Princess parrot, Polytelis alexandrae)
- Riverina dunes/river (Princess parrot, Polytelis alexandrae)
- Sand plains (Crest-tailed mulgara, Dasymercus cristicauda, Princess parrot, Polytelis alexandrae)

2.5 1.25 0 2.5 Kilometers
Coordinate System: GDA 1994 MGA Zone 53
TCH0048_Faunahabitat_Sheet 1.mxd

Figure 1

Distribution of fauna habitat within the proposed development footprint and vicinity and potential habitat for: Crest-tailed mulgara, princess parrot, and great desert skink (Sheet 1)





Service Layer Credits: Source: Esri, DigitalGlobe, GeoEye, Earthstar Geographics, CNES/Airbus DS, USDA, USGS, AeroGRID, IGN, and the GIS User Community

1 0.5 0 1 Kilometers

Coordinate System:
GDA 1994 MGA Zone 53

TCH0049_Faunahabitat_Sheet 2.mxd

Legend

- | | | | |
|--------------------------------|--|--|---------------------------------|
| Proposed development footprint | Clay pans | Plains | Sandy creek |
| Watercourse | Dune fields (<i>Crest-tailed mulgara</i> , <i>Dasyoercus cristicauda</i> , Princess parrot, <i>Polytelis alexandrae</i>) | Prominent hills and low ranges (Princess parrot, <i>Polytelis alexandrae</i>) | Tall rocky outcrops and valleys |
| MLA30612 | Limestone outcrops and plains | Sand plains (<i>Crest-tailed mulgara</i> , <i>Dasyoercus cristicauda</i> , Princess parrot, <i>Polytelis alexandrae</i>) | Tertiary conglomerate |
| Habitat type | Mesa terrain | | |
| Amoeba | | | |

Figure 2

Distribution of fauna habitat within the proposed development footprint and vicinity and potential habitat for: Crest-tailed mulgara, princess parrot, and great desert skink (Sheet 2)



ATTACHMENT B: Table 7-11 of the Chandler Facility Environmental Impact Statement Draft Report (February 2017)

ID	Outcome	Mitigation/management measure	Timing
B.1	Preservation of biodiversity	Finalise draft Biodiversity Management Plan prior to construction and incorporate into the CEMP, OEMP and/or RCP for the Proposal. The plan collates measures to mitigate and manage potential impacts on biodiversity.	Pre-construction
B.2	Reduced incidence of bushfire	Finalise draft Bushfire Management Plan prior to construction and incorporate into the CEMP, OEMP and RCP. The plan collates measures to mitigate and manage potential impacts on biodiversity.	Pre-construction
B.3	Preservation of biodiversity	Provide workers with an environmental induction prior to starting construction activities. This would include information on the ecological values of the site and protection measures to be implemented to protect biodiversity during construction.	Pre-construction and construction
B.4	Protection of threatened species	Undertake pre-clearance surveys for threatened species by a qualified ecologist.	Pre-construction and construction
B.5	Minimisation of vegetation removal and habitat loss	Defer vegetation removal until necessary.	Pre-construction and construction
B.6	Minimisation of vegetation removal and habitat loss	Locate site offices and stockpiles in already cleared and disturbed areas, where possible.	Pre-construction and construction
B.7	Minimisation of vegetation removal and habitat loss	Provide maps to construction staff clearly showing vegetation clearing boundaries.	Pre-construction and construction
B.8	Minimisation of vegetation removal and habitat loss	Leave mature trees, where possible, especially desert oaks, bloodwoods and bush tucker species.	Construction
B.9	Minimisation of vegetation removal and habitat loss	Leave fallen logs greater than 15 cm diameter or relocate to surrounding environment.	Construction
B.10	Minimise vegetation removal and habitat loss	Relocate bird nests found in trees or shrubs to be cleared to surrounding environment.	Construction
B.11	Reduced incidence of fauna injury/mortality	Ensure fauna is removed from areas intended to be cleared by a qualified ecologist.	Pre-construction and construction
B.12	Reduced incidence of fauna injury/mortality	Avoid driving during high risk times, dawn, dusk and at night, where possible.	Construction, operation, closure and rehabilitation
B.13	Reduced incidence of fauna injury/mortality	Prohibit off-road driving.	Construction, operation, closure and rehabilitation

ID	Outcome	Mitigation/management measure	Timing
B.14	Reduced incidence of fauna injury/mortality	Develop and maintain a fauna strike register.	Construction, operation, closure and rehabilitation
B.15	Reduced incidence of fauna injury/mortality	Limit access of third parties on-site.	Construction, operation, closure and rehabilitation
B.16	Reduced incidence of fauna injury/mortality	Ensure traffic adheres to speed limits and local road rules.	Construction, operation, closure and rehabilitation
B.17	Reduced incidence of fauna injury/mortality	Ensure speed limit and potential fauna crossing signs clearly are displayed on Chandler Haul Road, Henbury Access Road and other access tracks, as necessary.	Construction, operation, closure and rehabilitation
B.18	Reduced habitat fragmentation and edge effects	Implement weed and invasive species mitigation measures listed above.	Construction, operation, closure and rehabilitation
B.19	Reduced habitat fragmentation and edge effects	Implement introduced fauna mitigation measures listed above.	Construction, operation, closure and rehabilitation
B.20	Reduced habitat fragmentation and edge effects	Undertake routine inspections for weeds and invasive species.	Construction, operation, closure and rehabilitation
B.21	Elimination of waste left uncontained on-site	Develop and implement a Waste Management Plan.	Pre-construction
B.22	Elimination of waste left uncontained on-site	Ensure domestic waste stored in fauna proof bins.	Construction, operation, closure and rehabilitation
B.23	Elimination of waste left uncontained on-site	Ensure waste stored is stored in appropriately labelled containers.	Construction, operation, closure and rehabilitation
B.24	Elimination of waste left uncontained on-site	Bund liquid waste, where required.	Construction, operation, closure and rehabilitation
B.25	Elimination of waste left uncontained on-site	Implement waste hierarchy of avoid/minimise, reuse, recycle, recovery, and then disposal.	Construction, operation, closure and rehabilitation
B.26	Elimination of waste left uncontained on-site	Ensure waste is disposed off-site by licensed contractor(s).	Construction, operation, closure and rehabilitation
B.27	Elimination of waste left uncontained on-site	Ensure hazardous waste and hydrocarbons are stored separately in bunding, with appropriate signage.	Construction, operation, closure and rehabilitation
B.28	Minimised dust	Stage vegetation removal (clearing) to reduce total exposed cleared surface at any one time.	Construction
B.29	Minimised dust	Avoid clearing during dry windy conditions.	Construction
B.30	Minimised dust	Clear with blade up, where possible.	Construction
B.31	Minimised dust	Leave vegetation 10 centimetres in height on firebreaks and non-crucial tracks.	Construction

ID	Outcome	Mitigation/management measure	Timing
B.32	Minimised dust	Use water trucks during construction and closure and rehabilitation to control dust.	Construction, closure and rehabilitation
B.33	Elimination of unnecessary lighting in surrounding environment	Use lower intensity lights, e.g. yellow or red lighting, where possible. This would reduce impacts on nocturnal species and limit insect attraction	Construction
B.34	Elimination of unnecessary lighting in surrounding environment	Only have minimal lights on needed for safe operation of facilities.	Operation
B.35	Elimination of unnecessary lighting in surrounding environment	Direct lights towards the ground (where possible) or use shields to direct lights to only where light is required. Have lights positioned as low as possible	Construction, operation, closure and rehabilitation
B.36	Elimination of unnecessary lighting in surrounding environment	Turn lights off when not in use.	Construction, operation, closure and rehabilitation
B.37	Elimination of unnecessary lighting in surrounding environment	Restrict work to daylight hours, where possible	Construction, operation, closure and rehabilitation
B.38	Reduce noise and vibration	Turn off machinery when not in use.	Construction, operation, closure and rehabilitation
B.39	Reduce noise and vibration	Maintain and regularly service all generators, engines and vehicles on-site	Construction, operation, closure and rehabilitation
B.40	Reduce noise and vibration	Ensure vehicles carry full loads where possible to limit the number of vehicles on the Chandler Haul Road and Henbury Access Road.	Construction, operation, closure and rehabilitation
B.41	Prevention of the introduction and spread of weeds and invasive species	Vehicle/machinery wash-down prior to leaving Alice Springs or entering an area uncontaminated by weeds.	Construction, operation, closure and rehabilitation
B.42	Prevention of the introduction and spread of weeds and invasive species	Avoid contact with weed or invasive species seed, plant matter or soil potentially contaminated with weed seeds.	Construction, operation, closure and rehabilitation
B.43	Prevention of the introduction and spread of weeds and invasive species	Avoid clearing or removal of any weed or invasive species during seeding, or put plastic bag over seed heads before removing plant.	Construction, operation, closure and rehabilitation

ID	Outcome	Mitigation/management measure	Timing
B.44	Prevention of the introduction and spread of weeds and invasive species	Remove seed and mud from vehicle tyres and front grill daily.	Construction, operation, closure and rehabilitation
B.45	Prevention of the introduction and spread of weeds and invasive species	Undertake annual weed mapping in the vicinity of the proposed development footprint.	Construction, operation, closure and rehabilitation
B.46	Prevention of the introduction and spread of weeds and invasive species	Remove weeds following specialist advice from qualified ecologist or Weeds Branch, NT Government.	Construction, operation, closure and rehabilitation
B.47	Prevention of the introduction and spread of weeds and invasive species	Remove weed or invasive species before seeding times, where possible.	Construction, operation, closure and rehabilitation
B.48	Prevention of the introduction and spread of weeds and invasive species	Avoid driving in wet and muddy conditions, where possible.	Construction, operation, closure and rehabilitation
B.49	Prevention of an increase in the number or frequency of introduced fauna	Prevent access to artificial water and heat sources through construction of fences.	Construction, operation, closure and rehabilitation
B.50	Prevention of an increase in the number or frequency of introduced fauna	Dispose of all waste in predator-proof bins.	Construction, operation, closure and rehabilitation
B.51	Prevention of an increase in the number or frequency of introduced fauna	Develop and implement a no tolerance policy to the introduction of pest species by contractors, suppliers and personnel.	Construction, operation, closure and rehabilitation
B.52	Prevention of an increase in the number or frequency of introduced fauna	Place brush or vegetation stockpiles across linear developments no longer required (access tracks etc.) to inhibit movement of predators and introduced herbivores.	Construction, operation, closure and rehabilitation
B.53	Prevention of an increase in the number or frequency of introduced fauna	Undertake annual flora and fauna survey to record numbers of introduced fauna species.	Construction, operation, closure and rehabilitation
B.54	Prevention of an increase in the number or frequency of introduced fauna	Develop, implement and maintain fauna sighting register.	Construction, operation, closure and rehabilitation

ID	Outcome	Mitigation/management measure	Timing
B.55	Prevention of an increase in the number or frequency of introduced fauna	Develop and implement an introduced fauna control program.	Construction, operation, closure and rehabilitation
B.56	Prevention of an increase in the number or frequency of introduced fauna	Carry out feral animal control as required in consultation with stakeholders.	Construction, operation, closure and rehabilitation
B.57	Prevention of an increase in the number or frequency of introduced fauna	Install fauna proof fence around all infrastructure.	Construction
B.58	Prevention of an increase in the number or frequency of introduced fauna	Reduce artificial standing water	Construction, operation, closure and rehabilitation
B.59	Prevention of an increase in the number or frequency of introduced fauna	Close off and rehabilitate any cleared areas no longer required for safe operation.	Construction, operation, closure and rehabilitation
B.60	Prevention of an increase in the number or frequency of introduced fauna	Ensure waste receptacles are fauna proof.	Construction, operation, closure and rehabilitation
B.61	Prevention of an increase in the number or frequency of introduced fauna	Do not feed fauna	Construction, operation, closure and rehabilitation
B.62	Prevention of an increase in the number or frequency of introduced fauna	Remove any dead fauna or insects and either dispose off-site or bury greater than 50 centimetres deep to avoid predators uncovering.	Construction, operation, closure and rehabilitation
B.63	Prevention of an increase in the number or frequency of introduced fauna	Trap and relocate predator species if they are noticed to have increased in numbers and habituate around facilities. Trapping and relocating of fauna would be undertaken by a qualified ecologist.	Construction, operation, closure and rehabilitation
B.64	Prevention of fires resulting from the Proposal	Keep up to date with bushfire website and state services.	Construction, operation, closure and rehabilitation
B.65	Prevention of fires resulting from the Proposal	Construct and maintain firebreaks around infrastructure and significant habitats.	Construction, operation, closure and rehabilitation
B.66	Prevention of fires resulting from the Proposal	No open flames outside of designated areas unless hot works permit is approved.	Construction, operation, closure and rehabilitation

ID	Outcome	Mitigation/management measure	Timing
B.67	Prevention of fires resulting from the Proposal	Ensure flammable material is clearly labelled.	Construction, operation, closure and rehabilitation
B.68	Prevention of fires resulting from the Proposal	Ensure adequate firefighting equipment is stored on-site and staff trained in use.	Construction, operation, closure and rehabilitation
B.69	Prevention of fires resulting from the Proposal	Provide designated smoking area.	Construction, operation, closure and rehabilitation
B.70	Prevention of fires resulting from the Proposal	Organise and implement strategic back burning with traditional owners and Central Land Council.	Construction, operation, closure and rehabilitation
B.71	Prevention of fires resulting from the Proposal	Implement and carry out annual fuel load surveys before high risk fire season.	Construction, operation, closure and rehabilitation
B.72	Prevention of impacts to surrounding flora or watercourses from salt	Survey/monitor flora in dominant down wind direction from salt stockpiles for impacts.	Construction, operation, closure and rehabilitation
B.73	Prevention of impacts to surrounding flora or watercourses from salt	Cover all salt during transport.	Construction, operation, closure and rehabilitation
B.74	Prevention of impacts to surrounding flora or watercourses from salt	Monitor dust and airborne particles.	Construction, operation, closure and rehabilitation
B.75	Prevention of impacts to surrounding flora or watercourses from salt	Store salt in open stockpile for minimum time required.	Construction, operation, closure and rehabilitation
B.76	Prevention of unauthorised third party access	Inspect site for signs of unauthorised entry.	Construction, operation, closure and rehabilitation
B.77	Prevention of unauthorised third party access	Record all access to site in a site register.	Construction, operation, closure and rehabilitation
B.78	Prevention of unauthorised third party access	Ensure visitors complete induction or are accompanied by Tellus employee whilst on-site.	Construction, operation, closure and rehabilitation
B.79	Prevention of unauthorised third party access	Dog leg smaller access tracks when joining larger roads to limit third party access by reducing access tracks visibility from the main road.	Construction
B.80	Prevention of unauthorised third party access	Mark access tracks and roads as private property.	Construction
B.81	Prevention of unauthorised third party access	Erect clear signage indicating prohibition of unauthorised entry.	Construction