



ECU Job 27 Engineering Annexe
Stage 2: 16-163/130

EPBC Act Referral Supporting Document

Prepared for:
NS Projects

July 2017

● people ● planet ● professional

Document Reference	Revision	Prepared by	Reviewed by	Submitted to Client	
				Copies	Date
2300AC	A INTERNAL DRAFT	CM	KC	1x electronic	18/07/17
2300AC	B CLIENT DRAFT	CM	KC	1x electronic	18/07/17
2300AC	C CLIENT FINAL	CM	-	1x electronic	24/07/17

Disclaimer

This report is issued in accordance with, and is subject to, the terms of the contract between the Client and 360 Environmental Pty Ltd, including, without limitation, the agreed scope of the report. To the extent permitted by law, 360 Environmental Pty Ltd shall not be liable in contract, tort (including, without limitation, negligence) or otherwise for any use of, or reliance on, parts of this report without taking into account the report in its entirety and all previous and subsequent reports. 360 Environmental Pty Ltd considers the contents of this report to be current as at the date it was produced. This report, including each opinion, conclusion and recommendation it contains, should be considered in the context of the report as a whole. The opinions, conclusions and recommendations in this report are limited by its agreed scope. More extensive, or different, investigation, sampling and testing may have produced different results and therefore different opinions, conclusions and recommendations. Subject to the terms of the contract between the Client and 360 Environmental Pty Ltd, copying, reproducing, disclosing or disseminating parts of this report is prohibited (except to the extent required by law) unless the report is produced in its entirety including this cover page, without the prior written consent of 360 Environmental Pty Ltd.

© Copyright 2017 360 Environmental Pty Ltd ACN 109 499 041

Table of Contents

1	Introduction	1
1.1	Background and Project Overview	1
1.2	Document Purpose and Scope	1
2	MNES Assessment	2
2.1	World Heritage Properties	2
2.2	National Heritage Places.....	2
2.3	Wetlands of International Importance (Ramsar)	2
2.4	Nationally Threatened Species and Ecological Communities.....	2
2.5	Migratory Species	2
2.6	Commonwealth Marine Area.....	2
2.7	The Great Barrier Reef Marine Park	2
2.8	Nuclear Actions.....	2
2.9	A water resource, in relation to coal seam gas development and large coal mining development.....	3
3	Likelihood of Impacts to Matters of National Environmental Significance	4
3.1	Threatened Ecological Communities	4
3.2	Threatened Species	4
3.3	Migratory Species	13
4	Conclusion.....	15
5	Limitations.....	16
6	References	17

List of Tables

Table 1: Likelihood Assessment of Conservation Significant Flora Occurring within the Site (DotEE 2017a) (DPaW 2017b,c)	5
Table 2. Likelihood Assessment of Conservation Significant Fauna Occurring within the Site (DotEE 2017a) (DPaW 2017b,d).....	7
Table 3: Weed species potentially occurring within 2 km of the Site (DotEE 2017a).	12
Table 4: Migratory Species potentially occurring within a 5 km radius of the Site (DotEE 2017a)	13

List of Figures

Figure 1: Site Location	19
Figure 2: Black Cockatoo Breeding Habitat.....	20

List of Appendices

Appendix A Protected Matters Search Tool Report
Appendix B Naturemap Search Tool Report

1 Introduction

1.1 Background and Project Overview

Edith Cowan University (ECU) are proposing to develop an Environmental Engineering Teaching Laboratory at it's Joondalup campus, over Lot 504 and Lot 14593 Joondalup Drive. The Site is a small portion (0.05 ha) of land within the campus and located approximately 24 km north of Perth's Central Business District (CBD) (Figure 1). The Project will involve clearing of vegetation and the construction of a building.

The development is part of a larger project involving the development of Engineering facilities within this area. A Maritime Engineering Teaching Lab and Petroleum Engineering Research Facility will also be constructed to the south of the Site. These additional developments will occur on land already cleared and are not included in this referral.

1.2 Document Purpose and Scope

This document's purpose is to provide supporting information of the Engineering Annexe Development (the proposal) referral under the *Environment Protection and Biodiversity Conservation Act 1999* (EPBC Act). This document will address the Matters of National Environmental Significance (MNES) as listed under the EPBC Act, and whether the proposal is likely to impact upon them, or have a significant impact on the environment using significant impact criteria as outlined in the Significant Impact Guidelines 1.1 (DotEE 2013). If there is potential for significant impact, the relevant MNES will be addressed in an EPBC referral.

2 MNES Assessment

The following section addresses the MNES as protected under the EPBC Act and their significance, or lack thereof to the proposal.

2.1 World Heritage Properties

There are no World Heritage Properties within the vicinity of the proposal.

2.2 National Heritage Places

No National Heritage Places are listed as occurring within the proposal area.

2.3 Wetlands of International Importance (Ramsar)

The proposal area does not intersect with any Wetlands of International Importance.

2.4 Nationally Threatened Species and Ecological Communities

No Threatened Ecological Communities occur within the Site. The proposal is likely to impact on listed Threatened species', the Black Cockatoo, potential breeding habitat. However, this impact is not considered to be significant.

2.5 Migratory Species

A total of 15 migratory species listed under the EPBC Act were identified in the PMST report as potentially occurring in proximity to proposal site (Appendix A). The proposal is considered not likely to impact on these species.

2.6 Commonwealth Marine Area

There are no Commonwealth Marine areas surrounding the Site.

2.7 The Great Barrier Reef Marine Park

The proposal does not intersect with the Great Barrier Reef Marine Park.

2.8 Nuclear Actions

The proposal does not involve any nuclear actions.

2.9 A water resource, in relation to coal seam gas development and large coal mining development.

This proposal does not involve any coal seam gas development or coal mining development.

3 Likelihood of Impacts to Matters of National Environmental Significance

3.1 Threatened Ecological Communities

Desktop searches of the Protected Matters Search Tool (PMST) and the (then) Department of Parks and Wildlife's (DPaW) Threatened and Priority Ecological Communities (TEC and PEC) data identified no TECs listed under the EPBC Act as occurring within the Site (DotEE 2017a; DPaW 2017a).

The 'Banksia Woodlands of the Swan Coastal Plain' ecological community is listed (as at 16 September 2016) as an Endangered community under the EPBC Act. The PMST report identified that this TEC is likely to occur within the area. However, a search of DPaW's TEC and PEC database has identified that no TECs or PECs and their associated buffers exist across the Site (DPaW 2017a).

The survey did not identify the Site as containing the Banksia Woodlands TEC.

3.2 Threatened Species

The Significant Impact Guidelines provides a significant impact criteria to evaluate whether an action is likely to have a significant impact on Critically Endangered and Endangered species (DotEE 2013). These include:

- Lead to a long-term decrease in the size of a population;
- Reduce the area of occupancy of the species;
- Fragment an existing population into two or more populations;
- Adversely affect habitat critical to the survival of a species;
- Disrupt the breeding cycle of a population;
- Modify, destroy, remove, isolate or decrease the availability or quality of habitat to the extent that the species is likely to decline;
- Result in invasive species that are harmful to a Critically Endangered or Endangered species becoming established in the Endangered or Critically Endangered species habitat;
- Introduce disease that may cause the species to decline; and
- Interfere with the recovery of the species.

Preliminary evaluation of the proposed action against these criteria indicates that the action is unlikely to cause a significant impact to Critically Endangered or Endangered species.

3.2.1 Flora and Vegetation

Desktop searches of the PMST (DotEE 2017a), (then) DPaW's NatureMap (DPaW 2017b) and DPaW's Threatened and Priority Flora databases (DPaW 2017c) identified that 25 conservation significant flora species may occur within a 5 km radius of the Site.

A likelihood assessment was undertaken to determine the species that are 'Likely', 'Possible' and 'Unlikely' to occur within the Site. The assessment was carried out through analysis of regional soil characteristics and the nearest record of the species from the Site (Table 1).

The Likelihood assessment was carried out with the following criteria:

- **Recorded:** Recorded during the assessment;
- **Likely:** Suitable habitat present and records less than 5 km from the Site;
- **Possible:** Suitable habitat present and records between 5 km and 10 km from the Site; and
- **Unlikely:** No suitable habitat present and/or records greater than 10 km from the Site.

Table 1: Likelihood Assessment of Conservation Significant Flora Occurring within the Site (DotEE 2017a) (DPaW 2017b,c)

TAXA	STATE STATUS	EPBC STATUS	NEAREST RECORD (KM)	LIKELIHOOD
Slender Andersonia (<i>Andersonia gracilis</i>)	Vulnerable	Endangered	34.62	Unlikely
Dwarf Kangaroo Paw (<i>Anigozanthos viridis</i> <i>subsp. terraspectans</i>)	Vulnerable	Vulnerable	64.13	Unlikely
King Spider Orchid (<i>Caladenia huegelii</i>)	Critically Endangered	Endangered	10.18	Possible
Dwarf Bee-Orchid (<i>Diuris micrantha</i>)	Vulnerable	Vulnerable	49.89	Unlikely
Purdie's Donkey Orchid (<i>Diuris purdiei</i>)	Endangered	Endangered	32.88	Unlikely
Glossy-leafed Hammer Orchid (<i>Drakaea elastica</i>)	Critically Endangered	Endangered	40.82	Unlikely
Dwarf Hammer Orchid (<i>Drakaea micrantha</i>)	Endangered	Vulnerable	39.39	Unlikely
Keighery's Eleocharis (<i>Eleocharis keigheryi</i>)	Vulnerable	Vulnerable	23.08	Unlikely
Yanchep Mallee (<i>Eucalyptus argutifolia</i>)	Vulnerable	Vulnerable	6.59	Possible
Beaked Lepidosperma (<i>Lepidosperma rostratum</i>)	Endangered	Endangered	35.29	Unlikely

TAXA	STATE STATUS	EPBC STATUS	NEAREST RECORD (KM)	LIKELIHOOD
<i>Acacia benthamii</i>	Priority 2	-	2.58	Likely
<i>Austrostipa mundula</i>	Priority 3	-	0.31	Likely
<i>Baeckea sp. Limestone</i>	Priority 1	-	0.92	Likely
<i>Conostylis bracteata</i>	Priority 3	-	1.04	Likely
<i>Fabronia hampeana</i>	Priority 2	-	4.63	Likely
<i>Grevillea sp. Ocean Reef</i>	Priority 1	-	3.99	Likely
<i>Jacksonia sericea</i>	Priority 4	-	0.71	Likely
<i>Leucopogon maritimus</i>	Priority 1	-	4.98	Likely
<i>Marianthus paralius</i>	Vulnerable	-	0.71	Likely
<i>Pimelea calcicola</i>	Priority 3	-	2.58	Likely
<i>Sarcozona bicarinata</i>	Priority 3	-	4.37	Likely
<i>Stylidium paludicola</i>	Priority 3	-	0.71	Likely
<i>Styphelia filifolia</i>	Priority 3	-	3.39	Likely
<i>Tetraria sp. Chandala</i>	Priority 2	-	2.61	Likely
<i>Thelymitra variegata</i>	Priority 2	-	2.58	Likely

The likelihood assessment identified there are 15 conservation significant flora species considered 'Likely', two species considered 'Possible' and eight species considered 'Unlikely' to occur on the Site.

Although 15 of the 25 are considered 'Likely' to occur within the area, the Black Cockatoo habitat assessment did not identify any flora species of conservation significance during the survey (360 Environmental, 2017).

3.2.2 Fauna

Desktop searches of the PMST, NatureMap and DPaW's Threatened and Priority Fauna databases identified conservation significant fauna species potentially occurring within a 5 km radius of the Site.

The search returned a number of marine birds and waders, as well as the Water Rat, that require specific habitats including wetlands, oceans, shorelines and waterways. These listings may be associated with the coastline and nearby Lake Joondalup. As the Site does not contain these suitable habitats, these species have been omitted from the Likelihood assessment (DotEE 2017a; DPaW 2017a,d).

In addition, a number of species returned in the databases were historical records of extinct species (ie. Malleefowl) and these have been omitted from further discussion.

A likelihood assessment was undertaken to determine the likelihood of these species occurring on Site based on suitable habitat and the species known distribution (Table 3).

The likelihood of each species is based on the following criteria:

- **Likely:** Suitable habitat is present in the Site and the Site is within the species' known distribution;
- **Possible:** Limited or no suitable habitat is present in the Site, but is nearby. The species has good dispersal abilities, but is known from the general area; and
- **Unlikely:** No suitable habitat present in Site, but is nearby. Species has poor dispersal abilities, but is known from the general areal or suitable habitat present; however the Site is outside of the species' known distribution.

Table 2. Likelihood Assessment of Conservation Significant Fauna Occurring within the Site (DotEE 2017a) (DPaW 2017b,d)

TAXA	STATE STATUS	EPBC STATUS	LIKELIHOOD
Forest Red-tailed Black Cockatoo (<i>Calyptrorhynchus banksii naso</i>)	Vulnerable	Vulnerable	Likely
Baudin's Cockatoo (<i>Calyptrorhynchus baudinii</i>)	Endangered	Vulnerable	Likely
Carnaby's Cockatoo (<i>Calyptrorhynchus latirostris</i>)	Endangered	Endangered	Likely
Australian Painted Snipe (<i>Rostratula australis</i>)	Endangered	Endangered	Unlikely
Chuditch (<i>Dasyurus geoffroii</i>)	Vulnerable	Vulnerable	Unlikely
Cattle Egret (<i>Ardea ibis</i>)	International Agreement	Marine	Unlikely
Eastern Great Egret (<i>Ardea modesta</i>)	International Agreement	Marine	Unlikely
Great Sand Plover (<i>Charadrius leschenaultia</i>)	International Agreement	-	Unlikely
Southern Brown Bandicoot (<i>Isoodon obesulus</i>)	Priority 4	-	Unlikely
Quenda (<i>Isoodon obesulus fusciventer</i>)	Priority 4	-	Unlikely

TAXA	STATE STATUS	EPBC STATUS	LIKELIHOOD
Australian Little Bittern (<i>Ixobrychus dubius</i>)	Priority 4	-	Unlikely
Australian Black Bittern (<i>Ixobrychus flavicollis australis</i>)	Priority 1	-	Unlikely
Rainbow Bee-eater (<i>Merops ornatus</i>)	International Agreement	Marine	Possible
Black-striped Snake (<i>Neelaps calonotos</i>)	Priority 3	-	Possible
Glossy Ibis (<i>Plegadis falcinellus</i>)	International Agreement	Marine	Unlikely
Graceful Sun Moth (<i>Synemon gratiosa</i>)	Priority 4	-	Possible
Common Greenshank (<i>Tringa nebularia</i>)	International Agreement	Marine/Migratory	Unlikely

The likelihood assessment identified 17 conservation significant fauna species that are potentially occurring on the Site. A total of three species were considered 'Likely' to occur, three were considered 'Possible' occurring and 11 species considered 'Unlikely' to occur within the Site.

The three species considered 'Likely' to occur include; Carnaby's Cockatoo, Forest Red-tailed Black Cockatoo and Baudin's Cockatoo. However, the Black Cockatoo Habitat Assessment did not identify any Black Cockatoo species utilising the Site (360 Environmental, 2017).

3.2.2.1 Black Cockatoos

A Black Cockatoo Habitat Assessment was undertaken on 26 May 2017 to determine the extent and type of habitat suitable for Black Cockatoos within the survey area. No Black Cockatoos were observed flying or heard within the survey area (360 Environmental 2017).

The survey considered Carnaby's Cockatoo (*Calyptorhynchus latirostris*), Forest Red-tailed Black Cockatoo (*Calyptorhynchus banksii naso*) and Baudin's Black Cockatoo (*Calyptorhynchus baudinii*) listed under the EPBC Act.

The field survey did not identify any Threatened species listed under the EPBC Act or the *Wildlife Conservation Act 1950* (WC Act). All three Black Cockatoo species that occur within the south west of Australia are listed under the EPBC Act: Carnaby's Cockatoo is listed as Endangered and Baudin's Cockatoo and the Forest Red-tailed Black Cockatoo are listed as Vulnerable. The Site is outside but adjacent to the modelled Breeding Habitat for Carnaby's Cockatoo, nevertheless all three species of Black Cockatoo have been included for consideration in this document, particularly given that

they are all highly mobile and the DotEE distribution maps are indicative only (360 Environmental, 2017).

Under the DotEE's *Referral Guidelines for Three Threatened Black Cockatoo Species* (DSEWPac 2012), it is recommended a proposal be referred to the DotEE for assessment whereby the clearing of more than 1 ha of quality foraging habitat or the clearing or degradation of a breeding habitat is proposed.

Foraging Habitat

The survey area contains two Black Cockatoo foraging species; approximately 20 Marri trees with a DBH of < 500 mm, two Marri trees with a DBH of >500 mm and *Xanthorrhoea preissii*. However, this area contains approximately 0.05 ha of Black Cockatoo foraging habitat which is less than the threshold of '1 ha of quality foraging habitat' as under the Referral guidelines for the Black Cockatoo (DSEWPac 2012). As the area is below the threshold, it is not included in this referral.

Breeding Habitat

Black Cockatoos breed in large hollow-bearing trees, generally within woodlands or forests (Johnstone et al. 2013). The size of the tree can be a useful indication of the hollow bearing potential of the tree. Trees of suitable DBH are potentially important for maintaining breeding in the long-term, through maintaining the integrity of the habitat and allowing trees to provide suitable nest hollows is particularly important in woodland stands that are known to support Black Cockatoo breeding (DSEWPac 2012).

The Black Cockatoo habitat assessment identified two Marri trees considered to be potential breeding habitats for Black Cockatoos under the EPBC Act Black Cockatoo referral guidelines (Figure 2). These trees had a DBH of > 500 mm and one of these trees contained one hollow with an entrance diameter of > 100 mm at a height of 5 m, however, this hollow is considered to be too low to be utilised by Black Cockatoos (360 Environmental 2017).

Significant Impact Criteria Evaluation

Preliminary evaluation of the proposed action against these criteria indicates that the presence of Black Cockatoo breeding habitat does not trigger any of the significant impact criteria for the species.

The Site contains two potential breeding trees with a DBH > 500 mm and contains less than 0.05 ha of foraging habitat for Black Cockatoos where a small quantity of old foraging evidence was observed. This foraging evidence was in the form of one chewed pine cone that was considered likely to have been dropped from outside the Site. The Site also contains less than 0.05 ha of Black Cockatoo foraging habitat consisting of two species, Marri and *Xanthorrhoea preissii*. In addition to the two potential breeding trees, the Site contained approximately 20 Marri trees with a DBH of less than 500 mm was recorded in the Site considered to be foraging habitat. The foraging habitat of the area is

less than 0.05 ha, it is considerably smaller than '1 ha of good quality foraging habitat' as under the *EPBC Act Referral guidelines for three threatened black cockatoo species* (2012). One of the two potential breeding trees contains one observable hollow located at a height of 5 m with an entrance diameter of > 100 mm. This hollow is considered too low to be utilised by the Black Cockatoos for breeding (360 Environmental, 2017).

The proposed development will result in the clearing of two potential breeding trees and 0.05 ha of foraging habitat. No Black Cockatoos were heard or sighted during the survey. Mapping shows that there are six Bush Forever Sites and Regional Reserves within a 4 km radius of the Site to have surveyed or inferred floristic community types that are the same or similar to the breeding and foraging habitat for the Black Cockatoo (DPaW 2014a,b; Government of Western Australia, 2000). These Bush Forever sites range between 10 ha and 380 ha in size and they are in mostly Excellent to Good condition, this suggests that these conservation areas may provide more suitable Black Cockatoo habitat than the subject Site (Government of Western Australia, 2000). A number of the Bush Forever sites are vested as reserves with the Department of Biodiversity, Conservation and Attractions (DBCA) or Local Government to ensure the long term protection and conservation of bushland (DPaW 2014a,b). It is possible that these surrounding Bush Forever sites and Reserves would provide a larger area of occupancy of the Black Cockatoos. In addition, these areas are managed in conservation programs to ensure the long term protection of the area's environmental values.

The proposal to clear two potential Black Cockatoo breeding trees will not result in significant population impacts to the Black Cockatoo. This is mainly due to the lack of sighted or heard Black Cockatoos during the survey and the unsuitability of the one observable hollow that is considered too low to be utilised by the species for breeding (360 Environmental, 2017). In addition, breeding of Carnaby's Cockatoo is generally restricted to Eucalypt woodlands in the Wheatbelt (DSEWPaC 2012). This suggests the habitat may not be the primary use for breeding and may be utilised occasionally by the Black Cockatoo for foraging.

The Site also contains foraging habitat of approximately 20 Marri trees with a DBH of less than 500 mm, 2 Marri trees with a DBH of more than 500 mm and *Xanthorrhoea preissi*, however, this is not considered to be significant as it is considerably less than 1 ha of good quality foraging habitat as under the EPBC Act referral guidelines (360 Environmental, 2017; DSEWPaC 2012).

The proposed clearing within the project area will not result in the fragmentation of an existing population into two or more populations. This is due to the Site and surrounding landscape as heavily urbanised and containing little remnant native vegetation.

The extent of clearing is not considered to be significant to the maintenance of Black Cockatoo species. The EPBC Act Referral guidelines for the black cockatoos state that creating a gap of greater than 4 km between patches of Black Cockatoo habitat is at a high risk of causing significant impact (DSEWPaC 2012). Clearing of the Site will not

create a gap of more than 4 km between patches of Black Cockatoo Habitat as there are numerous areas of native vegetation within a 4 km radius of the Site.

The seasonal movements of Black Cockatoos mean they require large areas of habitat for breeding, roosting and foraging, as well as connectivity between habitats to assist their movement through the landscape (DSEWPaC 2012). Based on the EPBC Act Referral Guidelines for three threatened Black Cockatoo species, critical habitat for the Black Cockatoos is defined as providing breeding, roosting and foraging habitat which also provides connectivity between the habitats. Habitat that accommodates all three Black Cockatoo species would be defined as most critical (DSEWPaC 2012). It is not considered that the proposed clearing will adversely affect the habitat critical to the survival of Black Cockatoos as only two potential breeding trees are present within the Site, and one containing a hollow considered unsuitable for breeding by the Black Cockatoo.

The proposed action alone is unlikely to introduce or spread invasive species that are harmful to Black Cockatoos. The Site is already in a heavily urbanised landscape and as such, clearing of the entire Site is unlikely to introduce or spread invasive species. The clearing of the Site may ameliorate any weed species.

The proposed action to clear and develop an Engineering Building is unlikely to introduce disease that may cause the Black Cockatoo to decline. The Site is a stand alone area within a highly urbanised landscape, it is unlikely that the proposed action will introduce disease that may cause the Black Cockatoo to decline. The only possible disease and parasite vector associated with the Site would be the attraction of cats and foxes which are known to favour 'edge' effects created from fragmented habitats (DSEWPaC 2012). The proposed development is unlikely to be an ideal habitat for foxes or cats due to the presence of humans and traffic within the Site and surrounding urban areas. Clearing of the land and construction can result in the spread of dieback, however, there is minimal native vegetation remaining within the vicinity of the Site. Therefore, the proposed clearing of the Site is unlikely to introduce disease that may cause the ecological community to decline.

It is unlikely that the proposed action will interfere with the recovery of the Black Cockatoo species. Although one of the two potential breeding trees contain a hollow, it is considered to be at a height too low for use by the Black Cockatoo species (360 Environmental, 2017). In addition, the lack of recent evidence of the species using the Site and no Black Cockatoos were heard or observed flying overhead during the survey, suggests that the Site is not a primary habitat. The two potential breeding trees are not considered to be significant in the recovery of the species.

In summary, the proposal to clear 0.05 ha of Black Cockatoo habitat is not considered to represent a significant impact to the Black Cockatoos.

3.2.3 Introduced Species

A desktop search of the EPBC PMST indicated that a total of 15 weed species as potentially occurring within a 2 km radius of the Site (Table 2) (DotEE 2017a).

Of the 15 weed species potentially occurring on the Site, seven species are Declared under the *Biosecurity and Agriculture Management Act 2007* (BAM Act) and 11 are listed under the Commonwealth's Weeds of National Significance (WONS).

Table 3: Weed species potentially occurring within 2 km of the Site (DotEE 2017a).

TAXA	COMMON NAME	WONS	DECLARED UNDER THE BAM ACT
* <i>Asparagus aethiopicus</i>	Asparagus Fern	Yes	-
* <i>Asparagus asparagoides</i>	Bridal Creeper	Yes	s22(2) C3
* <i>Brachiaria mutica</i>	Para Grass	-	-
* <i>Cenchrus ciliaris</i>	Buffel-Grass	-	s11
* <i>Chrysanthemoides monilifera</i>	Bitou Bush	Yes	s12 C1
* <i>Chrysanthemoides monilifera subsp. monilifera</i>	Boneseed	Yes	s12 C2
* <i>Genista sp. X Genista monspessulana</i>	Broom	Yes	-
* <i>Lantana camara</i>	Wild Sage	Yes	s22(2) C3
* <i>Lycium ferocissimum</i>	African Boxthorn	Yes	s11
* <i>Olea europaea</i>	Olive	-	s11
* <i>Pinus radiata</i>	Radiata Pine	-	s11
* <i>Rubus fruticosus aggregate</i>	Blackberry	Yes	-
* <i>Salix sp.. except S.babylonica, S. x calodendron & S. x reichardtii</i>	Willows except Weeping Willow, Pussy Willow and Sterile Pussy Willow	Yes	s12 C1
* <i>Salvinia molesta</i>	Giant Salvinia	Yes	s12 C2
* <i>Tamarix aphylla</i>	Athel Pine	Yes	s22(2) C3

*The (then) DAFWA maintains a list of Declared Plants for Western Australia under the *Biosecurity and Agriculture Management Act 2007* (BAM Act). If a plant is declared for the whole of the State or for particular Local Government Areas, all landholders are obliged to comply with the relevant species-specific control measures.

*The (then) DAFWA maintains a list of Declared Plants for Western Australia under the BAM Act. If a plant is declared for the whole of the State or for particular Local Government Areas, all landholders are obliged to comply with the relevant species-specific control measures.

¹Declared Pest - s22(2), Declared Pest Prohibited – s12, Permitted – s11.

Declared pests must satisfy any applicable import requirements when imported, and may be subject to an import permit if they are potential carriers of high-risk organisms. They may also be subject to control and keeping requirements once within Western Australia.

Under the BAM Act, all declared pests are placed in one of three categories, namely C1 (exclusion), C2 (eradication) or C3 (management) (DAFWA 2017).

Preliminary evaluation of the following significant impact criteria identified that the proposed action is not likely to have a significant impact on the environment (DotEE 2013):

- Result in invasive species that are harmful to a Critically Endangered or Endangered species becoming established in the Endangered or Critically Endangered species habitat.

It is not likely that the weeds listed in Table 2 will occur within the Site and the proposed action is unlikely to introduce or spread invasive species. The Site is already within a heavily urbanised landscape and as such, clearing and development of the entire isolated Site is unlikely to introduce or spread invasive species. In addition, the clearing and subsequent urbanisation of the Site may ameliorate any weed species.

3.3 Migratory Species

A search of the EPBC PMST identified 15 Migratory species as potentially occurring within a 5 km radius of the Site as summarised in Table 4.

Table 4: Migratory Species potentially occurring within a 5 km radius of the Site (DotEE 2017a)

TAXA	CONSERVATION STATUS AS LISTED UNDER THE EPBC ACT
Common Noddy (<i>Anous stolidus</i>)	Marine/Migratory
Fork-Tailed Swift (<i>Apus pacificus</i>)	Marine/Migratory
Flesh-footed Shearwater (<i>Ardenna carneipes</i>)	Marine/Migratory
Amsterdam Albatross (<i>Diomedea amsterdamensis</i>)	Endangered
Southern Royal Albatross (<i>Diomedea epomophora</i>)	Vulnerable
Wandering Albatross (<i>Diomedea exulans</i>)	Vulnerable
Caspian Tern (<i>Hydroprogne caspia</i>)	Marine/Migratory

TAXA	CONSERVATION STATUS AS LISTED UNDER THE EPBC ACT
Southern Giant Petrel (<i>Macronectes giganteus</i>)	Endangered
Northern Giant Petrel (<i>Macronectes halli</i>)	Vulnerable
Bridled Tern (<i>Onychoprion anaethetus</i>)	Marine/Migratory
Sooty Albatross (<i>Phoebastria fusca</i>)	Vulnerable
Roseate Tern (<i>Sterna dougallii</i>)	Marine/Migratory
Tasmanian Shy Albatross (<i>Thalassarche cauta</i>)	Vulnerable
Black Browed Albatross (<i>Thalassarche melanophris</i>)	Vulnerable
Grey Wagtail (<i>Motacilla cinerea</i>)	Migratory

The significant impact criteria to evaluate whether an action is likely to have a significant impact on a migratory species include (DotEE 2013):

- Substantially modify (including by fragmenting, altering fire regimes, altering nutrient cycles or altering hydrological cycles), destroy or isolate an area of important habitat for migratory species;
- Result in an invasive species that is harmful to migratory species becoming established in an area of important habitat for the migratory species; or
- Seriously disrupt the lifecycle (breeding, feeding, migration or resting behaviour) of an ecologically significant proportion of the population of a migratory species.

A preliminary evaluation of the proposed action against these criteria indicate that the action is unlikely to trigger any of the significant impact criteria for migratory species.

14 out of the 15 Listed Migratory species identified in Table 4 are associated with coastal, wetland or creekline environments (DotEE 2017b). The Site does not contain any wetland habitat or surface water features and is located in excess of 4.3 km from the coast and 900 m from the nearest wetland (Lake Joondalup). The Proposed Development Area does not contain any vegetation or habitat suitable for most of the species listed in Table 4.

Birds are also unlikely to be impacted by the development of the small Site due to their high mobility and extensive home range, in addition to the already fragmented surrounding urban environment (DotEE 2017b). The proposed action is unlikely to be a significant impact upon migratory species.

4 Conclusion

It is concluded that the risk of significant impacts to the majority of the MNES species potentially occurring at the Site is not significant, given the small scale Site with limited native vegetation. However, the presence of Black Cockatoo breeding habitat within the Site triggers that the proposal is likely to have an impact on the MNES, however, it is considered that this impact is not significant. This is further addressed in the referral under the EPBC Act.

5 Limitations

This report is produced strictly in accordance with the scope of services set out in the contract or otherwise agreed in accordance with the contract. 360 Environmental makes no representations or warranties in relation to the nature and quality of soil and water other than the visual observation and analytical data in this report.

In the preparation of this report, 360 Environmental has relied upon documents, information, data and analyses ("client's information") provided by the client and other individuals and entities. In most cases where client's information has been relied upon, such reliance has been indicated in this report. Unless expressly set out in this report, 360 Environmental has not verified that the client's information is accurate, exhaustive or current and the validity and accuracy of any aspect of the report including, or based upon, any part of the client's information is contingent upon the accuracy, exhaustiveness and currency of the client's information. 360 Environmental shall not be liable to the client or any other person in connection with any invalid or inaccurate aspect of this report where that invalidity or inaccuracy arose because the client's information was not accurate, exhaustive and current or arose because of any information or condition that was concealed, withheld, misrepresented, or otherwise not fully disclosed or available to 360 Environmental.

Aspects of this report, including the opinions, conclusions and recommendations it contains, are based on the results of the investigation, sampling and testing set out in the contract and otherwise in accordance with normal practices and standards. The investigation, sampling and testing are designed to produce results that represent a reasonable interpretation of the general conditions of the site that is the subject of this report. However, due to the characteristics of the site, including natural variations in site conditions, the results of the investigation, sampling and testing may not accurately represent the actual state of the whole site at all points.

It is important to recognise that site conditions, including the extent and concentration of contaminants, can change with time. This is particularly relevant if this report, including the data, opinions, conclusions and recommendations it contains, are to be used a considerable time after it was prepared. In these circumstances, further investigation of the site may be necessary.

Subject to the terms of the contract between the Client and 360 Environmental Pty Ltd, copying, reproducing, disclosing or disseminating parts of this report is prohibited (except to the extent required by law) unless the report is produced in its entirety including this page, without the prior written consent of 360 Environmental Pty Ltd.

6 References

360 Environmental, 2017. *Environmental and Black Cockatoo Habitat Assessment*. Prepared for NS Projects. West Leederville, Western Australia.

Department of the Sustainability, Environment, Water, Population and Communities (DSEWPaC), 2012. *EPBC Act referral guidelines for three threatened black cockatoo species*. Commonwealth of Australia.

Department of Parks and Wildlife (DPaW), 2014a. *Bush Forever Sites*. GIS dataset. Government of Western Australia.

Department of Parks and Wildlife (DPaW), 2014b. *Regional Reserves*. GIS Dataset. Government of Western Australia.

Department of Parks and Wildlife (DPaW), 2017a. *TEC and PEC Database Search*, Requested 19 June 2017, GIS Dataset. Government of Western Australia

Department of Parks and Wildlife (DPaW), 2017b. *NatureMap Search Tool*. Accessed <https://naturemap.dpaw.wa.gov.au/>. Government of Western Australia.

Department of Parks and Wildlife (DPaW), 2017c. *Threatened and Priority Flora Database Search*, Requested 19 June 2017. GIS Dataset. Government of Western Australia.

Department of Parks and Wildlife (DPaW), 2017d. *Threatened and Priority Fauna Database Search*, Requested 19 June 2017. GIS Dataset. Government of Western Australia.

Department of the Environment and Energy (DotEE), 2013. *Significant Impact Guidelines 1.1 – Matters of National Environmental Significance*. Commonwealth of Australia.

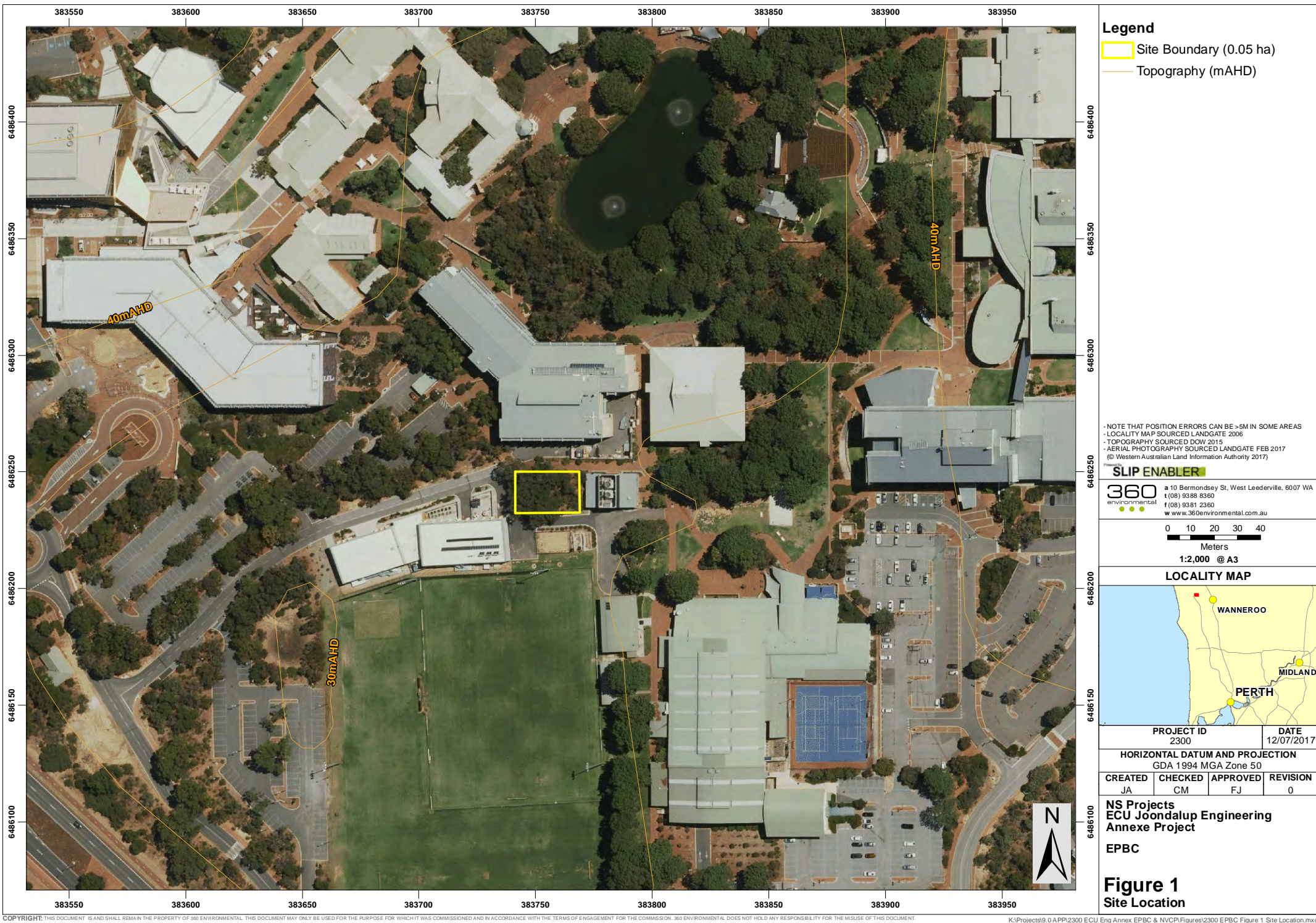
Department of the Environment and Energy (DotEE), 2017a. Protected Matters Search Tool (PMST), accessed from <http://www.environment.gov.au/webgis-framework/apps/pmst/pmst.jsf>. Commonwealth of Australia.

Department of the Environment and Energy (DotEE), 2017b. Species Profile and Threats Database. Accessed 26 June 2017 from <http://www.environment.gov.au/cgi-bin/sprat/public/sprat.pl>. Commonwealth of Australia.

Department of Food and Agriculture WA (DAFWA), 2017. Western Australian Organism List – BAM Act Definitions and Control Categories. Accessed 5 July 2017 from <https://www.agric.wa.gov.au/organisms>. Government of Western Australia.

Government of Western Australia, 2000. *Bush Forever Volume 2 – Directory of Bush Forever Sites*. Department of Environment Protection. Perth, Western Australia.

FIGURES



Legend

- Site Boundary (0.05 ha)
- Topography (mAHD)

- NOTE THAT POSITION ERRORS CAN BE >5M IN SOME AREAS
- LOCALITY MAP SOURCED LANDGATE 2006
- TOPOGRAPHY SOURCED DOW 2015
- AERIAL PHOTOGRAPHY SOURCED LANDGATE FEB 2017
(© Western Australian Land Information Authority 2017)

SLIP ENABLER

360
environmental

10 Bermondsey St, West Leederville, 6007 WA
t (08) 9388 8360
f (08) 9381 2360
www.360environmental.com.au

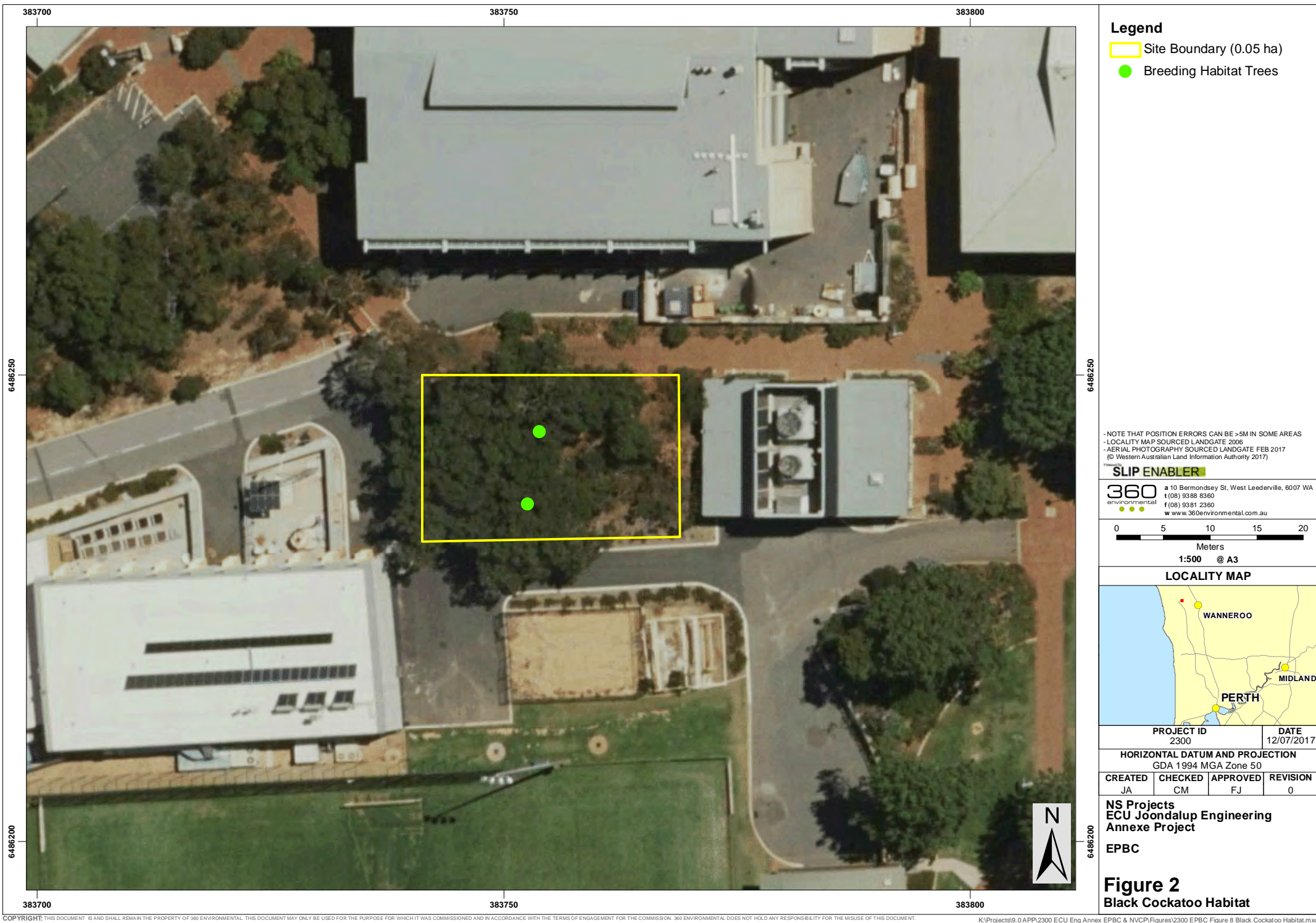
LOCALITY MAP

PROJECT ID 2300		DATE 12/07/2017	
HORIZONTAL DATUM AND PROJECTION GDA 1994 MGA Zone 50			
CREATED JA	CHECKED CM	APPROVED FJ	REVISION 0

NS Projects
ECU Joondalup Engineering
Annexe Project
EPBC

Figure 1
Site Location

COPYRIGHT: THIS DOCUMENT IS AND SHALL REMAIN THE PROPERTY OF 360 ENVIRONMENTAL. THIS DOCUMENT MAY ONLY BE USED FOR THE PURPOSE FOR WHICH IT WAS COMMISSIONED AND IN ACCORDANCE WITH THE TERMS OF ENGAGEMENT FOR THE COMMISSION. 360 ENVIRONMENTAL DOES NOT HOLD ANY RESPONSIBILITY FOR THE MISUSE OF THIS DOCUMENT. K:\Projects\9.0\APP\2300 ECU Eng Annex EPBC & NVCP\Figures\2300 EPBC Figure 1 Site Location.mxd



Legend

- Site Boundary (0.05 ha)
- Breeding Habitat Trees

- NOTE THAT POSITION ERRORS CAN BE >5M IN SOME AREAS
- LOCALITY MAP SOURCED LANDGATE 2006
- AERIAL PHOTOGRAPHY SOURCED LANDGATE FEB 2017
© Western Australian Land Information Authority 2017

SLIP ENABLER

360 environmental
a 10 Bermondsey St, West Leederville, 6007 WA
t (08) 9338 8360
f (08) 9381 2360
www.360environmental.com.au

0 5 10 15 20
Meters
1:500 @ A3

LOCALITY MAP

PROJECT ID 2300		DATE 12/07/2017	
HORIZONTAL DATUM AND PROJECTION GDA 1994 MGA Zone 50			
CREATED JA	CHECKED CM	APPROVED FJ	REVISION 0

NS Projects
ECU Joondalup Engineering
Annexe Project
EPBC

Figure 2
Black Cockatoo Habitat

APPENDIX A

Protected Matters Search Tool Report



EPBC Act Protected Matters Report

This report provides general guidance on matters of national environmental significance and other matters protected by the EPBC Act in the area you have selected.

Information on the coverage of this report and qualifications on data supporting this report are contained in the caveat at the end of the report.

Information is available about [Environment Assessments](#) and the EPBC Act including significance guidelines, forms and application process details.

Report created: 19/06/17 17:38:58

[Summary](#)

[Details](#)

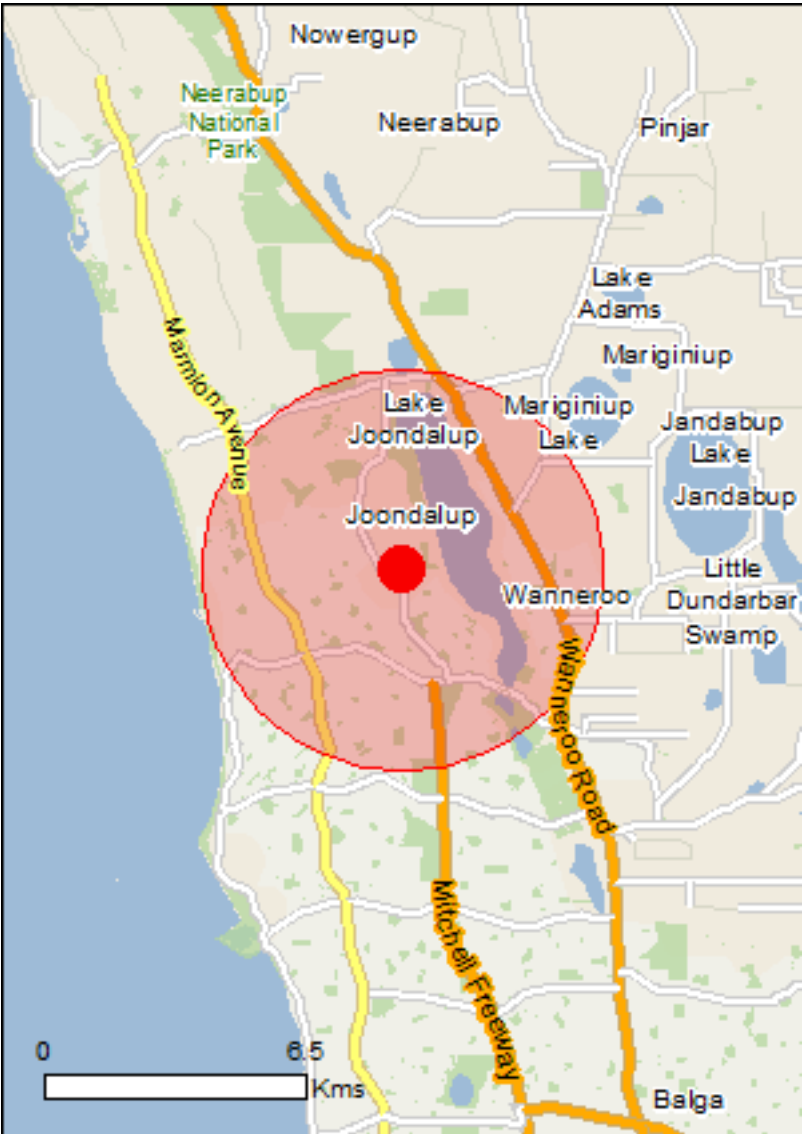
[Matters of NES](#)

[Other Matters Protected by the EPBC Act](#)

[Extra Information](#)

[Caveat](#)

[Acknowledgements](#)



This map may contain data which are
©Commonwealth of Australia
(Geoscience Australia), ©PSMA 2010

[Coordinates](#)

[Buffer: 5.0Km](#)



Summary

Matters of National Environmental Significance

This part of the report summarises the matters of national environmental significance that may occur in, or may relate to, the area you nominated. Further information is available in the detail part of the report, which can be accessed by scrolling or following the links below. If you are proposing to undertake an activity that may have a significant impact on one or more matters of national environmental significance then you should consider the [Administrative Guidelines on Significance](#).

World Heritage Properties:	None
National Heritage Places:	None
Wetlands of International Importance:	None
Great Barrier Reef Marine Park:	None
Commonwealth Marine Area:	None
Listed Threatened Ecological Communities:	1
Listed Threatened Species:	45
Listed Migratory Species:	40

Other Matters Protected by the EPBC Act

This part of the report summarises other matters protected under the Act that may relate to the area you nominated. Approval may be required for a proposed activity that significantly affects the environment on Commonwealth land, when the action is outside the Commonwealth land, or the environment anywhere when the action is taken on Commonwealth land. Approval may also be required for the Commonwealth or Commonwealth agencies proposing to take an action that is likely to have a significant impact on the environment anywhere.

The EPBC Act protects the environment on Commonwealth land, the environment from the actions taken on Commonwealth land, and the environment from actions taken by Commonwealth agencies. As heritage values of a place are part of the 'environment', these aspects of the EPBC Act protect the Commonwealth Heritage values of a Commonwealth Heritage place. Information on the new heritage laws can be found at <http://www.environment.gov.au/heritage>

A [permit](#) may be required for activities in or on a Commonwealth area that may affect a member of a listed threatened species or ecological community, a member of a listed migratory species, whales and other cetaceans, or a member of a listed marine species.

Commonwealth Land:	1
Commonwealth Heritage Places:	None
Listed Marine Species:	70
Whales and Other Cetaceans:	12
Critical Habitats:	None
Commonwealth Reserves Terrestrial:	None
Commonwealth Reserves Marine:	None

Extra Information

This part of the report provides information that may also be relevant to the area you have nominated.

State and Territory Reserves:	5
Regional Forest Agreements:	None
Invasive Species:	41
Nationally Important Wetlands:	1
Key Ecological Features (Marine)	None

Details

Matters of National Environmental Significance

Listed Threatened Ecological Communities

[Resource Information]

For threatened ecological communities where the distribution is well known, maps are derived from recovery plans, State vegetation maps, remote sensing imagery and other sources. Where threatened ecological community distributions are less well known, existing vegetation maps and point location data are used to produce indicative distribution maps.

Name	Status	Type of Presence
Banksia Woodlands of the Swan Coastal Plain ecological community	Endangered	Community likely to occur within area

Listed Threatened Species

[Resource Information]

Name	Status	Type of Presence
Birds		

Anous tenuirostris melanops Australian Lesser Noddy [26000]	Vulnerable	Species or species habitat may occur within area
Calidris canutus Red Knot, Knot [855]	Endangered	Species or species habitat likely to occur within area
Calidris ferruginea Curlew Sandpiper [856]	Critically Endangered	Species or species habitat known to occur within area
Calyptorhynchus banksii naso Forest Red-tailed Black-Cockatoo, Karrak [67034]	Vulnerable	Species or species habitat likely to occur within area
Calyptorhynchus latirostris Carnaby's Cockatoo, Short-billed Black-Cockatoo [59523]	Endangered	Species or species habitat known to occur within area
Diomedea amsterdamensis Amsterdam Albatross [64405]	Endangered	Species or species habitat may occur within area
Diomedea epomophora Southern Royal Albatross [89221]	Vulnerable	Foraging, feeding or related behaviour likely to occur within area
Diomedea exulans Wandering Albatross [89223]	Vulnerable	Foraging, feeding or related behaviour likely to occur within area
Diomedea sanfordi Northern Royal Albatross [64456]	Endangered	Foraging, feeding or related behaviour likely to occur within area
Leipoa ocellata Malleefowl [934]	Vulnerable	Species or species habitat likely to occur within area
Limosa lapponica baueri Bar-tailed Godwit (baueri), Western Alaskan Bar-tailed Godwit [86380]	Vulnerable	Species or species habitat may occur within

Name	Status	Type of Presence
area		
Limosa lapponica menzbieri Northern Siberian Bar-tailed Godwit, Bar-tailed Godwit (menzbieri) [86432]	Critically Endangered	Species or species habitat may occur within area
Macronectes giganteus Southern Giant-Petrel, Southern Giant Petrel [1060]	Endangered	Species or species habitat may occur within area
Macronectes halli Northern Giant Petrel [1061]	Vulnerable	Species or species habitat may occur within area
Numenius madagascariensis Eastern Curlew, Far Eastern Curlew [847]	Critically Endangered	Species or species habitat may occur within area
Pachyptila turtur subantarctica Fairy Prion (southern) [64445]	Vulnerable	Species or species habitat likely to occur within area
Phoebetria fusca Sooty Albatross [1075]	Vulnerable	Species or species habitat may occur within area
Rostratula australis Australian Painted Snipe [77037]	Endangered	Species or species habitat may occur within area
Sternula nereis nereis Australian Fairy Tern [82950]	Vulnerable	Foraging, feeding or related behaviour known to occur within area
Thalassarche cauta cauta Shy Albatross, Tasmanian Shy Albatross [82345]	Vulnerable	Species or species habitat may occur within area
Thalassarche cauta steadi White-capped Albatross [82344]	Vulnerable	Foraging, feeding or related behaviour likely to occur within area
Thalassarche impavida Campbell Albatross, Campbell Black-browed Albatross [64459]	Vulnerable	Species or species habitat may occur within area
Thalassarche melanophris Black-browed Albatross [66472]	Vulnerable	Species or species habitat may occur within area
Mammals		
Balaenoptera musculus Blue Whale [36]	Endangered	Species or species habitat likely to occur within area
Dasyurus geoffroii Chuditch, Western Quoll [330]	Vulnerable	Species or species habitat likely to occur within area
Eubalaena australis Southern Right Whale [40]	Endangered	Breeding known to occur within area
Megaptera novaeangliae Humpback Whale [38]	Vulnerable	Species or species habitat known to occur within area
Neophoca cinerea Australian Sea-lion, Australian Sea Lion [22]	Vulnerable	Foraging, feeding or related behaviour likely to occur within area
Plants		
Andersonia gracilis Slender Andersonia [14470]	Endangered	Species or species habitat may occur within

Name	Status	Type of Presence
area		
Anigozanthos viridis subsp. terraspectans Dwarf Green Kangaroo Paw [3435]	Vulnerable	Species or species habitat may occur within area
Caladenia huegelii King Spider-orchid, Grand Spider-orchid, Rusty Spider-orchid [7309]	Endangered	Species or species habitat likely to occur within area
Diuris micrantha Dwarf Bee-orchid [55082]	Vulnerable	Species or species habitat likely to occur within area
Diuris purdiei Purdie's Donkey-orchid [12950]	Endangered	Species or species habitat may occur within area
Drakaea elastica Glossy-leafed Hammer Orchid, Glossy-leaved Hammer Orchid, Warty Hammer Orchid [16753]	Endangered	Species or species habitat likely to occur within area
Drakaea micrantha Dwarf Hammer-orchid [56755]	Vulnerable	Species or species habitat may occur within area
Eleocharis keigheryi Keighery's Eleocharis [64893]	Vulnerable	Species or species habitat may occur within area
Eucalyptus argutifolia Yanchep Mallee, Wabling Hill Mallee [24263]	Vulnerable	Species or species habitat likely to occur within area
Lepidosperma rostratum Beaked Lepidosperma [14152]	Endangered	Species or species habitat likely to occur within area
Reptiles		
Caretta caretta Loggerhead Turtle [1763]	Endangered	Species or species habitat known to occur within area
Chelonia mydas Green Turtle [1765]	Vulnerable	Species or species habitat known to occur within area
Dermochelys coriacea Leatherback Turtle, Leathery Turtle, Luth [1768]	Endangered	Species or species habitat known to occur within area
Natator depressus Flatback Turtle [59257]	Vulnerable	Species or species habitat known to occur within area
Sharks		
Carcharias taurus (west coast population) Grey Nurse Shark (west coast population) [68752]	Vulnerable	Species or species habitat known to occur within area
Carcharodon carcharias White Shark, Great White Shark [64470]	Vulnerable	Species or species habitat known to occur within area
Rhincodon typus Whale Shark [66680]	Vulnerable	Species or species habitat may occur within area
Listed Migratory Species		[Resource Information]
* Species is listed under a different scientific name on the EPBC Act - Threatened Species list.		
Name	Threatened	Type of Presence
Migratory Marine Birds		

Name	Threatened	Type of Presence
Anous stolidus Common Noddy [825]		Species or species habitat likely to occur within area
Apus pacificus Fork-tailed Swift [678]		Species or species habitat likely to occur within area
Ardenna carneipes Flesh-footed Shearwater, Fleshy-footed Shearwater [82404]		Species or species habitat likely to occur within area
Diomedea amsterdamensis Amsterdam Albatross [64405]	Endangered	Species or species habitat may occur within area
Diomedea epomophora Southern Royal Albatross [89221]	Vulnerable	Foraging, feeding or related behaviour likely to occur within area
Diomedea exulans Wandering Albatross [89223]	Vulnerable	Foraging, feeding or related behaviour likely to occur within area
Hydroprogne caspia Caspian Tern [808]		Foraging, feeding or related behaviour known to occur within area
Macronectes giganteus Southern Giant-Petrel, Southern Giant Petrel [1060]	Endangered	Species or species habitat may occur within area
Macronectes halli Northern Giant Petrel [1061]	Vulnerable	Species or species habitat may occur within area
Onychoprion anaethetus Bridled Tern [82845]		Foraging, feeding or related behaviour likely to occur within area
Phoebetria fusca Sooty Albatross [1075]	Vulnerable	Species or species habitat may occur within area
Sterna dougallii Roseate Tern [817]		Foraging, feeding or related behaviour likely to occur within area
Thalassarche cauta Tasmanian Shy Albatross [89224]	Vulnerable*	Species or species habitat may occur within area
Thalassarche melanophris Black-browed Albatross [66472]	Vulnerable	Species or species habitat may occur within area
Migratory Marine Species		
Balaena glacialis australis Southern Right Whale [75529]	Endangered*	Breeding known to occur within area
Balaenoptera edeni Bryde's Whale [35]		Species or species habitat may occur within area
Balaenoptera musculus Blue Whale [36]	Endangered	Species or species habitat likely to occur within area
Caperea marginata Pygmy Right Whale [39]		Species or species habitat may occur within area

Name	Threatened	Type of Presence
Carcharodon carcharias White Shark, Great White Shark [64470]	Vulnerable	Species or species habitat known to occur within area
Caretta caretta Loggerhead Turtle [1763]	Endangered	Species or species habitat known to occur within area
Chelonia mydas Green Turtle [1765]	Vulnerable	Species or species habitat known to occur within area
Dermochelys coriacea Leatherback Turtle, Leathery Turtle, Luth [1768]	Endangered	Species or species habitat known to occur within area
Lamna nasus Porbeagle, Mackerel Shark [83288]		Species or species habitat may occur within area
Manta alfredi Reef Manta Ray, Coastal Manta Ray, Inshore Manta Ray, Prince Alfred's Ray, Resident Manta Ray [84994]		Species or species habitat may occur within area
Manta birostris Giant Manta Ray, Chevron Manta Ray, Pacific Manta Ray, Pelagic Manta Ray, Oceanic Manta Ray [84995]		Species or species habitat may occur within area
Megaptera novaeangliae Humpback Whale [38]	Vulnerable	Species or species habitat known to occur within area
Natator depressus Flatback Turtle [59257]	Vulnerable	Species or species habitat known to occur within area
Orcinus orca Killer Whale, Orca [46]		Species or species habitat may occur within area
Rhincodon typus Whale Shark [66680]	Vulnerable	Species or species habitat may occur within area
Migratory Terrestrial Species		
Motacilla cinerea Grey Wagtail [642]		Species or species habitat may occur within area
Migratory Wetlands Species		
Actitis hypoleucos Common Sandpiper [59309]		Species or species habitat known to occur within area
Calidris acuminata Sharp-tailed Sandpiper [874]		Species or species habitat known to occur within area
Calidris canutus Red Knot, Knot [855]	Endangered	Species or species habitat likely to occur within area
Calidris ferruginea Curlew Sandpiper [856]	Critically Endangered	Species or species habitat known to occur within area
Calidris melanotos Pectoral Sandpiper [858]		Species or species habitat may occur within area
Calidris ruficollis Red-necked Stint [860]		Species or species habitat known to occur

Name	Threatened	Type of Presence
Limosa lapponica Bar-tailed Godwit [844]		within area Species or species habitat may occur within area
Numenius madagascariensis Eastern Curlew, Far Eastern Curlew [847]	Critically Endangered	Species or species habitat may occur within area
Pandion haliaetus Osprey [952]		Species or species habitat known to occur within area
Tringa nebularia Common Greenshank, Greenshank [832]		Species or species habitat known to occur within area

Other Matters Protected by the EPBC Act

Commonwealth Land	[Resource Information]
-------------------	--------------------------

The Commonwealth area listed below may indicate the presence of Commonwealth land in this vicinity. Due to the unreliability of the data source, all proposals should be checked as to whether it impacts on a Commonwealth area, before making a definitive decision. Contact the State or Territory government land department for further information.

Name
Commonwealth Land -

Listed Marine Species	[Resource Information]
-----------------------	--------------------------

* Species is listed under a different scientific name on the EPBC Act - Threatened Species list.

Name	Threatened	Type of Presence
Birds		
Actitis hypoleucos Common Sandpiper [59309]		Species or species habitat known to occur within area
Anous stolidus Common Noddy [825]		Species or species habitat likely to occur within area
Anous tenuirostris melanops Australian Lesser Noddy [26000]	Vulnerable	Species or species habitat may occur within area
Apus pacificus Fork-tailed Swift [678]		Species or species habitat likely to occur within area
Ardea alba Great Egret, White Egret [59541]		Species or species habitat known to occur within area
Ardea ibis Cattle Egret [59542]		Species or species habitat may occur within area
Calidris acuminata Sharp-tailed Sandpiper [874]		Species or species habitat known to occur within area
Calidris canutus Red Knot, Knot [855]	Endangered	Species or species habitat likely to occur within area
Calidris ferruginea Curlew Sandpiper [856]	Critically Endangered	Species or species habitat known to occur

Name	Threatened	Type of Presence
Calidris melanotos Pectoral Sandpiper [858]		within area Species or species habitat may occur within area
Calidris ruficollis Red-necked Stint [860]		Species or species habitat known to occur within area
Diomedea amsterdamensis Amsterdam Albatross [64405]	Endangered	Species or species habitat may occur within area
Diomedea epomophora Southern Royal Albatross [89221]	Vulnerable	Foraging, feeding or related behaviour likely to occur within area
Diomedea exulans Wandering Albatross [89223]	Vulnerable	Foraging, feeding or related behaviour likely to occur within area
Diomedea sanfordi Northern Royal Albatross [64456]	Endangered	Foraging, feeding or related behaviour likely to occur within area
Haliaeetus leucogaster White-bellied Sea-Eagle [943]		Species or species habitat known to occur within area
Himantopus himantopus Black-winged Stilt [870]		Species or species habitat known to occur within area
Larus pacificus Pacific Gull [811]		Foraging, feeding or related behaviour may occur within area
Limosa lapponica Bar-tailed Godwit [844]		Species or species habitat may occur within area
Macronectes giganteus Southern Giant-Petrel, Southern Giant Petrel [1060]	Endangered	Species or species habitat may occur within area
Macronectes halli Northern Giant Petrel [1061]	Vulnerable	Species or species habitat may occur within area
Merops ornatus Rainbow Bee-eater [670]		Species or species habitat may occur within area
Motacilla cinerea Grey Wagtail [642]		Species or species habitat may occur within area
Numenius madagascariensis Eastern Curlew, Far Eastern Curlew [847]	Critically Endangered	Species or species habitat may occur within area
Pachyptila turtur Fairy Prion [1066]		Species or species habitat likely to occur within area
Pandion haliaetus Osprey [952]		Species or species habitat known to occur within area
Phoebetria fusca Sooty Albatross [1075]	Vulnerable	Species or species habitat may occur within area

Name	Threatened	Type of Presence
Puffinus assimilis Little Shearwater [59363]		Foraging, feeding or related behaviour known to occur within area
Puffinus carneipes Flesh-footed Shearwater, Fleshy-footed Shearwater [1043]		Species or species habitat likely to occur within area
Recurvirostra novaehollandiae Red-necked Avocet [871]		Species or species habitat known to occur within area
Rostratula benghalensis (sensu lato) Painted Snipe [889]	Endangered*	Species or species habitat may occur within area
Sterna anaethetus Bridled Tern [814]		Foraging, feeding or related behaviour likely to occur within area
Sterna caspia Caspian Tern [59467]		Foraging, feeding or related behaviour known to occur within area
Sterna dougallii Roseate Tern [817]		Foraging, feeding or related behaviour likely to occur within area
Thalassarche cauta Tasmanian Shy Albatross [89224]	Vulnerable*	Species or species habitat may occur within area
Thalassarche impavida Campbell Albatross, Campbell Black-browed Albatross [64459]	Vulnerable	Species or species habitat may occur within area
Thalassarche melanophris Black-browed Albatross [66472]	Vulnerable	Species or species habitat may occur within area
Thalassarche steadi White-capped Albatross [64462]	Vulnerable*	Foraging, feeding or related behaviour likely to occur within area
Thinornis rubricollis Hooded Plover [59510]		Species or species habitat may occur within area
Tringa nebularia Common Greenshank, Greenshank [832]		Species or species habitat known to occur within area
Fish		
Acentronura australe Southern Pygmy Pipehorse [66185]		Species or species habitat may occur within area
Campichthys galei Gale's Pipefish [66191]		Species or species habitat may occur within area
Choeroichthys suillus Pig-snouted Pipefish [66198]		Species or species habitat may occur within area
Halicampus brocki Brock's Pipefish [66219]		Species or species habitat may occur within area
Hippocampus angustus Western Spiny Seahorse, Narrow-bellied Seahorse [66234]		Species or species habitat may occur within area

Name	Threatened	Type of Presence
Hippocampus breviceps Short-head Seahorse, Short-snouted Seahorse [66235]		Species or species habitat may occur within area
Hippocampus subelongatus West Australian Seahorse [66722]		Species or species habitat may occur within area
Lissocampus fatiloquus Prophet's Pipefish [66250]		Species or species habitat may occur within area
Maroubra perserrata Sawtooth Pipefish [66252]		Species or species habitat may occur within area
Mitotichthys meraculus Western Crested Pipefish [66259]		Species or species habitat may occur within area
Nannocampus subosseus Bonyhead Pipefish, Bony-headed Pipefish [66264]		Species or species habitat may occur within area
Phycodurus eques Leafy Seadragon [66267]		Species or species habitat may occur within area
Phyllopteryx taeniolatus Common Seadragon, Weedy Seadragon [66268]		Species or species habitat may occur within area
Pugnaso curtirostris Pugnose Pipefish, Pug-nosed Pipefish [66269]		Species or species habitat may occur within area
Solegnathus lettiensis Gunther's Pipehorse, Indonesian Pipefish [66273]		Species or species habitat may occur within area
Stigmatopora argus Spotted Pipefish, Gulf Pipefish, Peacock Pipefish [66276]		Species or species habitat may occur within area
Stigmatopora nigra Widebody Pipefish, Wide-bodied Pipefish, Black Pipefish [66277]		Species or species habitat may occur within area
Stigmatopora olivacea a pipefish [74966]		Species or species habitat may occur within area
Syngnathoides biaculeatus Double-end Pipehorse, Double-ended Pipehorse, Alligator Pipefish [66279]		Species or species habitat may occur within area
Urocampus carinirostris Hairy Pipefish [66282]		Species or species habitat may occur within area
Vanacampus margaritifer Mother-of-pearl Pipefish [66283]		Species or species habitat may occur within area
Mammals		
Arctocephalus forsteri Long-nosed Fur-seal, New Zealand Fur-seal [20]		Species or species habitat may occur within area
Neophoca cinerea Australian Sea-lion, Australian Sea Lion [22]	Vulnerable	Foraging, feeding or related behaviour likely to occur within area

Name	Threatened	Type of Presence
Reptiles		
Aipysurus pooleorum Shark Bay Seasnake [66061]		Species or species habitat may occur within area
Caretta caretta Loggerhead Turtle [1763]	Endangered	Species or species habitat known to occur within area
Chelonia mydas Green Turtle [1765]	Vulnerable	Species or species habitat known to occur within area
Dermochelys coriacea Leatherback Turtle, Leathery Turtle, Luth [1768]	Endangered	Species or species habitat known to occur within area
Disteira kingii Spectacled Seasnake [1123]		Species or species habitat may occur within area
Natator depressus Flatback Turtle [59257]	Vulnerable	Species or species habitat known to occur within area
Pelamis platurus Yellow-bellied Seasnake [1091]		Species or species habitat may occur within area

Whales and other Cetaceans		[Resource Information]
Name	Status	Type of Presence
Mammals		
Balaenoptera acutorostrata Minke Whale [33]		Species or species habitat may occur within area
Balaenoptera edeni Bryde's Whale [35]		Species or species habitat may occur within area
Balaenoptera musculus Blue Whale [36]	Endangered	Species or species habitat likely to occur within area
Caperea marginata Pygmy Right Whale [39]		Species or species habitat may occur within area
Delphinus delphis Common Dolphin, Short-beaked Common Dolphin [60]		Species or species habitat may occur within area
Eubalaena australis Southern Right Whale [40]	Endangered	Breeding known to occur within area
Grampus griseus Risso's Dolphin, Grampus [64]		Species or species habitat may occur within area
Megaptera novaeangliae Humpback Whale [38]	Vulnerable	Species or species habitat known to occur within area
Orcinus orca Killer Whale, Orca [46]		Species or species habitat may occur within area
Stenella attenuata Spotted Dolphin, Pantropical Spotted Dolphin [51]		Species or species habitat may occur within area

Name	Status	Type of Presence
Tursiops aduncus Indian Ocean Bottlenose Dolphin, Spotted Bottlenose Dolphin [68418]		Species or species habitat likely to occur within area
Tursiops truncatus s. str. Bottlenose Dolphin [68417]		Species or species habitat may occur within area

Extra Information

State and Territory Reserves	[Resource Information]
Name	State
Lake Joondalup	WA
Neerabup	WA
Unnamed WA21176	WA
Unnamed WA43290	WA
Woodvale Nature Reserve	WA

Invasive Species	[Resource Information]
Weeds reported here are the 20 species of national significance (WoNS), along with other introduced plants that are considered by the States and Territories to pose a particularly significant threat to biodiversity. The following feral animals are reported: Goat, Red Fox, Cat, Rabbit, Pig, Water Buffalo and Cane Toad. Maps from Landscape Health Project, National Land and Water Resouces Audit, 2001.	

Name	Status	Type of Presence
Birds		
Acridotheres tristis Common Myna, Indian Myna [387]		Species or species habitat likely to occur within area
Anas platyrhynchos Mallard [974]		Species or species habitat likely to occur within area
Carduelis carduelis European Goldfinch [403]		Species or species habitat likely to occur within area
Columba livia Rock Pigeon, Rock Dove, Domestic Pigeon [803]		Species or species habitat likely to occur within area
Passer domesticus House Sparrow [405]		Species or species habitat likely to occur within area
Passer montanus Eurasian Tree Sparrow [406]		Species or species habitat likely to occur within area
Streptopelia chinensis Spotted Turtle-Dove [780]		Species or species habitat likely to occur within area
Streptopelia senegalensis Laughing Turtle-dove, Laughing Dove [781]		Species or species habitat likely to occur within area
Sturnus vulgaris Common Starling [389]		Species or species habitat likely to occur

Name	Status	Type of Presence within area
Mammals		
Bos taurus Domestic Cattle [16]		Species or species habitat likely to occur within area
Canis lupus familiaris Domestic Dog [82654]		Species or species habitat likely to occur within area
Felis catus Cat, House Cat, Domestic Cat [19]		Species or species habitat likely to occur within area
Funambulus pennantii Northern Palm Squirrel, Five-striped Palm Squirrel [129]		Species or species habitat likely to occur within area
Mus musculus House Mouse [120]		Species or species habitat likely to occur within area
Oryctolagus cuniculus Rabbit, European Rabbit [128]		Species or species habitat likely to occur within area
Rattus norvegicus Brown Rat, Norway Rat [83]		Species or species habitat likely to occur within area
Rattus rattus Black Rat, Ship Rat [84]		Species or species habitat likely to occur within area
Vulpes vulpes Red Fox, Fox [18]		Species or species habitat likely to occur within area
Plants		
Anredera cordifolia Madeira Vine, Jalap, Lamb's-tail, Mignonette Vine, Anredera, Gulf Madeiravine, Heartleaf Madeiravine, Potato Vine [2643]		Species or species habitat likely to occur within area
Asparagus aethiopicus Asparagus Fern, Ground Asparagus, Basket Fern, Sprengi's Fern, Bushy Asparagus, Emerald Asparagus [62425]		Species or species habitat likely to occur within area
Asparagus asparagoides Bridal Creeper, Bridal Veil Creeper, Smilax, Florist's Smilax, Smilax Asparagus [22473]		Species or species habitat likely to occur within area
Asparagus declinatus Bridal Veil, Bridal Veil Creeper, Pale Berry Asparagus Fern, Asparagus Fern, South African Creeper [66908]		Species or species habitat likely to occur within area
Asparagus plumosus Climbing Asparagus-fern [48993]		Species or species habitat likely to occur within area
Brachiaria mutica Para Grass [5879]		Species or species habitat may occur within area
Cenchrus ciliaris Buffel-grass, Black Buffel-grass [20213]		Species or species habitat may occur within area
Chrysanthemoides monilifera Bitou Bush, Boneseed [18983]		Species or species habitat may occur within area
Chrysanthemoides monilifera subsp. monilifera Boneseed [16905]		Species or species

Name	Status	Type of Presence
Genista sp. X Genista monspessulana Broom [67538]		habitat likely to occur within area
		Species or species habitat may occur within area
Lantana camara Lantana, Common Lantana, Kamara Lantana, Large-leaf Lantana, Pink Flowered Lantana, Red Flowered Lantana, Red-Flowered Sage, White Sage, Wild Sage [10892] Lycium ferocissimum African Boxthorn, Boxthorn [19235]		Species or species habitat likely to occur within area
		Species or species habitat likely to occur within area
Olea europaea Olive, Common Olive [9160]		Species or species habitat may occur within area
Opuntia spp. Prickly Pears [82753]		Species or species habitat likely to occur within area
Pinus radiata Radiata Pine Monterey Pine, Insignis Pine, Wilding Pine [20780]		Species or species habitat may occur within area
Protasparagus densiflorus Asparagus Fern, Plume Asparagus [5015]		Species or species habitat likely to occur within area
Protasparagus plumosus Climbing Asparagus-fern, Ferny Asparagus [11747]		Species or species habitat likely to occur within area
Rubus fruticosus aggregate Blackberry, European Blackberry [68406]		Species or species habitat likely to occur within area
Salix spp. except S.babylonica, S.x calodendron & S.x reichardtii Willows except Weeping Willow, Pussy Willow and Sterile Pussy Willow [68497]		Species or species habitat likely to occur within area
Salvinia molesta Salvinia, Giant Salvinia, Aquarium Watermoss, Kariba Weed [13665]		Species or species habitat likely to occur within area
Tamarix aphylla Athel Pine, Athel Tree, Tamarisk, Athel Tamarisk, Athel Tamarix, Desert Tamarisk, Flowering Cypress, Salt Cedar [16018]		Species or species habitat likely to occur within area
Reptiles		
Hemidactylus frenatus Asian House Gecko [1708]		Species or species habitat likely to occur within area
Ramphotyphlops braminus Flowerpot Blind Snake, Brahminy Blind Snake, Cacing Besi [1258]		Species or species habitat likely to occur within area
Nationally Important Wetlands		[Resource Information]
Name		State
Joondalup Lake		WA

Caveat

The information presented in this report has been provided by a range of data sources as acknowledged at the end of the report.

This report is designed to assist in identifying the locations of places which may be relevant in determining obligations under the Environment Protection and Biodiversity Conservation Act 1999. It holds mapped locations of World and National Heritage properties, Wetlands of International and National Importance, Commonwealth and State/Territory reserves, listed threatened, migratory and marine species and listed threatened ecological communities. Mapping of Commonwealth land is not complete at this stage. Maps have been collated from a range of sources at various resolutions.

Not all species listed under the EPBC Act have been mapped (see below) and therefore a report is a general guide only. Where available data supports mapping, the type of presence that can be determined from the data is indicated in general terms. People using this information in making a referral may need to consider the qualifications below and may need to seek and consider other information sources.

For threatened ecological communities where the distribution is well known, maps are derived from recovery plans, State vegetation maps, remote sensing imagery and other sources. Where threatened ecological community distributions are less well known, existing vegetation maps and point location data are used to produce indicative distribution maps.

Threatened, migratory and marine species distributions have been derived through a variety of methods. Where distributions are well known and if time permits, maps are derived using either thematic spatial data (i.e. vegetation, soils, geology, elevation, aspect, terrain, etc) together with point locations and described habitat; or environmental modelling (MAXENT or BIOCLIM habitat modelling) using point locations and environmental data layers.

Where very little information is available for species or large number of maps are required in a short time-frame, maps are derived either from 0.04 or 0.02 decimal degree cells; by an automated process using polygon capture techniques (static two kilometre grid cells, alpha-hull and convex hull); or captured manually or by using topographic features (national park boundaries, islands, etc). In the early stages of the distribution mapping process (1999-early 2000s) distributions were defined by degree blocks, 100K or 250K map sheets to rapidly create distribution maps. More reliable distribution mapping methods are used to update these distributions as time permits.

Only selected species covered by the following provisions of the EPBC Act have been mapped:

- migratory and
- marine

The following species and ecological communities have not been mapped and do not appear in reports produced from this database:

- threatened species listed as extinct or considered as vagrants
- some species and ecological communities that have only recently been listed
- some terrestrial species that overfly the Commonwealth marine area
- migratory species that are very widespread, vagrant, or only occur in small numbers

The following groups have been mapped, but may not cover the complete distribution of the species:

- non-threatened seabirds which have only been mapped for recorded breeding sites
- seals which have only been mapped for breeding sites near the Australian continent

Such breeding sites may be important for the protection of the Commonwealth Marine environment.

Coordinates

-31.75364 115.77304

Acknowledgements

This database has been compiled from a range of data sources. The department acknowledges the following custodians who have contributed valuable data and advice:

- [Office of Environment and Heritage, New South Wales](#)
- [Department of Environment and Primary Industries, Victoria](#)
- [Department of Primary Industries, Parks, Water and Environment, Tasmania](#)
- [Department of Environment, Water and Natural Resources, South Australia](#)
- [Department of Land and Resource Management, Northern Territory](#)
- [Department of Environmental and Heritage Protection, Queensland](#)
- [Department of Parks and Wildlife, Western Australia](#)
- [Environment and Planning Directorate, ACT](#)
- [Birdlife Australia](#)
- [Australian Bird and Bat Banding Scheme](#)
- [Australian National Wildlife Collection](#)
- Natural history museums of Australia
- [Museum Victoria](#)
- [Australian Museum](#)
- [South Australian Museum](#)
- [Queensland Museum](#)
- [Online Zoological Collections of Australian Museums](#)
- [Queensland Herbarium](#)
- [National Herbarium of NSW](#)
- [Royal Botanic Gardens and National Herbarium of Victoria](#)
- [Tasmanian Herbarium](#)
- [State Herbarium of South Australia](#)
- [Northern Territory Herbarium](#)
- [Western Australian Herbarium](#)
- [Australian National Herbarium, Canberra](#)
- [University of New England](#)
- [Ocean Biogeographic Information System](#)
- [Australian Government, Department of Defence](#)
- [Forestry Corporation, NSW](#)
- [Geoscience Australia](#)
- [CSIRO](#)
- [Australian Tropical Herbarium, Cairns](#)
- [eBird Australia](#)
- [Australian Government – Australian Antarctic Data Centre](#)
- [Museum and Art Gallery of the Northern Territory](#)
- [Australian Government National Environmental Science Program](#)
- [Australian Institute of Marine Science](#)
- [Reef Life Survey Australia](#)
- [American Museum of Natural History](#)
- [Queen Victoria Museum and Art Gallery, Inveresk, Tasmania](#)
- [Tasmanian Museum and Art Gallery, Hobart, Tasmania](#)
- Other groups and individuals

The Department is extremely grateful to the many organisations and individuals who provided expert advice and information on numerous draft distributions.

Please feel free to provide feedback via the [Contact Us](#) page.

APPENDIX B

Naturemap Search Tool Report

NatureMap Species Report

Created By Guest user on 19/06/2017

Current Names Only Yes
Core Datasets Only Yes
Method 'By Circle'
Centre 115° 46' 23" E, 31° 45' 14" S
Buffer 5km
Group By Kingdom

Kingdom	Species	Records
Animalia	310	12693
Chromista	4	4
Fungi	16	19
Plantae	478	819
Protozoa	13	19
TOTAL	821	13554

Name ID	Species Name	Naturalised	Conservation Code	¹ Endemic To Query Area
Animalia				
1.	24559 <i>Acanthagenys rufogularis</i> (Spiny-cheeked Honeyeater)			
2.	<i>Acanthistius pardalotus</i>			
3.	<i>Acanthistius serratus</i>			
4.	24260 <i>Acanthiza apicalis</i> (Broad-tailed Thornbill, Inland Thornbill)			
5.	24261 <i>Acanthiza chrysorrhoa</i> (Yellow-rumped Thornbill)			
6.	24262 <i>Acanthiza inornata</i> (Western Thornbill)			
7.	24560 <i>Acanthorhynchus superciliosus</i> (Western Spinebill)			
8.	25535 <i>Accipiter cirrocephalus</i> (Collared Sparrowhawk)			
9.	24281 <i>Accipiter cirrocephalus</i> subsp. <i>cirrocephalus</i> (Collared Sparrowhawk)			
10.	25536 <i>Accipiter fasciatus</i> (Brown Goshawk)			
11.	42368 <i>Acritoscincus trilineatus</i> (Western Three-lined Skink)			
12.	25755 <i>Acrocephalus australis</i> (Australian Reed Warbler)			
13.	41323 <i>Actitis hypoleucos</i> (Common Sandpiper)		IA	
14.	<i>Amblyomma triguttatum</i>			
15.	<i>Aname mainae</i>			
16.	<i>Aname tepperi</i>			
17.	24310 <i>Anas castanea</i> (Chestnut Teal)			
18.	24312 <i>Anas gracilis</i> (Grey Teal)			
19.	24313 <i>Anas platyrhynchos</i> (Mallard)			
20.	24315 <i>Anas rhynchotis</i> (Australasian Shoveler)			
21.	24316 <i>Anas superciliosa</i> (Pacific Black Duck)			
22.	47414 <i>Anhinga novaehollandiae</i> (Australasian Darter)			
23.	<i>Anser anser</i>			
24.	24561 <i>Anthochaera carunculata</i> (Red Wattlebird)			
25.	24562 <i>Anthochaera lunulata</i> (Western Little Wattlebird)			
26.	24991 <i>Aprasia repens</i> (Sand-plain Worm-lizard)			
27.	25554 <i>Apus pacificus</i> (Fork-tailed Swift, Pacific Swift)		IA	
28.	24285 <i>Aquila audax</i> (Wedge-tailed Eagle)			
29.	<i>Araneus cyphoxis</i>			
30.	24209 <i>Arctocephalus tropicalis</i> (Subantarctic fur-seal)		T	
31.	25558 <i>Ardea ibis</i> (Cattle Egret)		IA	
32.	41324 <i>Ardea modesta</i> (Eastern Great Egret)		IA	
33.	24340 <i>Ardea novaehollandiae</i> (White-faced Heron)			
34.	24341 <i>Ardea pacifica</i> (White-necked Heron)			
35.	25566 <i>Artamus cinereus</i> (Black-faced Woodswallow)			
36.	24353 <i>Artamus cyanopterus</i> (Dusky Woodswallow)			
37.	<i>Artoria linnaei</i>			
38.	<i>Austracantha minax</i>			
39.	24318 <i>Aythya australis</i> (Hardhead)			
40.	<i>Ballarra longipalpus</i>			
41.	<i>Barnardius zonarius</i>			
42.	24319 <i>Biziura lobata</i> (Musk Duck)			

Name ID	Species Name	Naturalised	Conservation Code	¹ Endemic To Query Area
43.	42381 <i>Brachyurophis semifasciatus</i> (Southern Shovel-nosed Snake)			
44.	25713 <i>Cacatua galerita</i> (Sulphur-crested Cockatoo)			
45.	24721 <i>Cacatua galerita</i> subsp. <i>galerita</i> (Sulphur-crested Cockatoo)	Y		
46.	25714 <i>Cacatua pastinator</i> (Western Long-billed Corella)			
47.	25715 <i>Cacatua roseicapilla</i> (Galah)			
48.	25716 <i>Cacatua sanguinea</i> (Little Corella)			
49.	24729 <i>Cacatua tenuirostris</i> (Eastern Long-billed Corella)	Y		
50.	25598 <i>Cacomantis flabelliformis</i> (Fan-tailed Cuckoo)			
51.	24427 <i>Cacomantis flabelliformis</i> subsp. <i>flabelliformis</i> (Fan-tailed Cuckoo)			
52.	42307 <i>Cacomantis pallidus</i> (Pallid Cuckoo)			
53.	24784 <i>Calidris ferruginea</i> (Curlew Sandpiper)		T	
54.	24788 <i>Calidris ruficollis</i> (Red-necked Stint)		IA	
55.	25717 <i>Calyptorhynchus banksii</i> (Red-tailed Black-Cockatoo)			
56.	24733 <i>Calyptorhynchus baudinii</i> (Baudin's Cockatoo (long-billed black-cockatoo), Baudin's Cockatoo)		T	
57.	24734 <i>Calyptorhynchus latirostris</i> (Carnaby's Cockatoo (short-billed black-cockatoo), Carnaby's Cockatoo)		T	
58.	30883 <i>Canis lupus</i> subsp. <i>familiaris</i> (Dog)	Y		
59.	<i>Capropygia unistriata</i>			
60.	<i>Carassius auratus</i>			
61.	25335 <i>Caretta caretta</i> (Loggerhead Turtle)		T	
62.	<i>Centroberyx australis</i>			
63.	24086 <i>Cercartetus concinnus</i> (Western Pygmy-possum, Mundarda)			
64.	<i>Cercophonius sulcatus</i>			
65.	24186 <i>Chalinolobus gouldii</i> (Gould's Wattled Bat)			
66.	25575 <i>Charadrius leschenaultii</i> (Greater Sand Plover)		IA	
67.	24377 <i>Charadrius ruficapillus</i> (Red-capped Plover)			
68.	43380 <i>Chelodina colliei</i> (South-western Snake-necked Turtle)			
69.	24321 <i>Chenonetta jubata</i> (Australian Wood Duck, Wood Duck)			
70.	47909 <i>Cheramoeca leucosterna</i> (White-backed Swallow)			
71.	24980 <i>Christinus marmoratus</i> (Marbled Gecko)			
72.	<i>Chroicocephalus novaehollandiae</i>			
73.	24432 <i>Chrysococcyx lucidus</i> subsp. <i>plagosus</i> (Shining Bronze Cuckoo)			
74.	24288 <i>Circus approximans</i> (Swamp Harrier)			
75.	24774 <i>Cladorhynchus leucocephalus</i> (Banded Stilt)			
76.	25675 <i>Colluricincla harmonica</i> (Grey Shrike-thrush)			
77.	24613 <i>Colluricincla harmonica</i> subsp. <i>rufiventris</i> (Grey Shrike-thrush)			
78.	24399 <i>Columba livia</i> (Domestic Pigeon)	Y		
79.	25568 <i>Coracina novaehollandiae</i> (Black-faced Cuckoo-shrike)			
80.	<i>Cormocephalus aurantiipes</i>			
81.	24416 <i>Corvus bennetti</i> (Little Crow)			
82.	25592 <i>Corvus coronoides</i> (Australian Raven)			
83.	25701 <i>Coturnix ypsilophora</i> (Brown Quail)			
84.	24420 <i>Cracticus nigrogularis</i> (Pied Butcherbird)			
85.	25595 <i>Cracticus tibicen</i> (Australian Magpie)			
86.	25596 <i>Cracticus torquatus</i> (Grey Butcherbird)			
87.	24918 <i>Crenadactylus ocellatus</i> subsp. <i>ocellatus</i> (Clawless Gecko)			
88.	25400 <i>Crinia insignifera</i> (Squelching Froglet)			
89.	30893 <i>Cryptoblepharus buchananii</i>			
90.	25020 <i>Cryptoblepharus plagiocephalus</i>			
91.	30899 <i>Ctenophorus adelaidensis</i> (Southern Heath Dragon, Western Heath Dragon)			
92.	25027 <i>Ctenotus australis</i>			
93.	25039 <i>Ctenotus fallens</i>			
94.	25047 <i>Ctenotus impar</i>			
95.	25087 <i>Cyclodomorphus celatus</i> (Western Slender Blue-tongue)			
96.	24322 <i>Cygnus atratus</i> (Black Swan)			
97.	30901 <i>Dacelo novaeguineae</i> (Laughing Kookaburra)	Y		
98.	25673 <i>Daphoenositta chrysoptera</i> (Varied Sittella)			
99.	24999 <i>Delma grayii</i>			
100.	25296 <i>Demansia psammophis</i> subsp. <i>reticulata</i> (Yellow-faced Whipsnake)			
101.	24325 <i>Dendrocygna eytoni</i> (Plumed Whistling Duck)			
102.	25607 <i>Dicaeum hirundinaceum</i> (Mistletoebird)			
103.	<i>Dingosa serrata</i>			
104.	24929 <i>Diplodactylus granariensis</i> subsp. <i>granariensis</i>			
105.	24939 <i>Diplodactylus polyophthalmus</i>			
106.	25251 <i>Echiopsis curta</i> (Bardick)			
107.	25100 <i>Egernia napoleonis</i>			
108.	<i>Egretta garzetta</i>			
109.	<i>Egretta novaehollandiae</i>			
110.	<i>Elanus axillaris</i>			

Name ID	Species Name	Naturalised	Conservation Code	¹ Endemic To Query Area
111.	24290 <i>Elanus caeruleus</i> subsp. <i>axillaris</i> (Australian Black-shouldered Kite)			
112.	25250 <i>Elapognathus coronatus</i> (Crowned Snake)			
113.	47937 <i>Elseymornis melanops</i> (Black-fronted Dotterel)			
114.	<i>Eodelena convexa</i>			
115.	<i>Eolophus roseicapillus</i>			
116.	24652 <i>Eopsaltria georgiana</i> (White-breasted Robin)			
117.	24567 <i>Epthianura albifrons</i> (White-fronted Chat)			
118.	<i>Eriophora biapicata</i>			
119.	24379 <i>Erythrogonyx cinctus</i> (Red-kneed Dotterel)			
120.	<i>Ethmostigmus rubripes</i>			
121.	25621 <i>Falco berigora</i> (Brown Falcon)			
122.	25622 <i>Falco cenchroides</i> (Australian Kestrel, Nankeen Kestrel)			
123.	24472 <i>Falco cenchroides</i> subsp. <i>cenchrus</i> (Australian Kestrel, Nankeen Kestrel)			
124.	25623 <i>Falco longipennis</i> (Australian Hobby)			
125.	25624 <i>Falco peregrinus</i> (Peregrine Falcon)		S	
126.	24475 <i>Falco peregrinus</i> subsp. <i>macropus</i> (Australian Peregrine Falcon)		S	
127.	24616 <i>Falcunculus frontatus</i> subsp. <i>leucogaster</i> (Western Shrike-tit, Crested Shrike-tit)			
128.	24041 <i>Felis catus</i> (Cat)	Y		
129.	25727 <i>Fulica atra</i> (Eurasian Coot)			
130.	24761 <i>Fulica atra</i> subsp. <i>australis</i> (Eurasian Coot)			
131.	25729 <i>Gallinula tenebrosa</i> (Dusky Moorhen)			
132.	24763 <i>Gallinula tenebrosa</i> subsp. <i>tenebrosa</i> (Dusky Moorhen)			
133.	25730 <i>Gallirallus philippensis</i> (Buff-banded Rail)			
134.	<i>Gambusia affinis</i>			
135.	25530 <i>Gerygone fusca</i> (Western Gerygone)			
136.	24443 <i>Grallina cyanoleuca</i> (Magpie-lark)			
137.	<i>Gymnothorax woodwardi</i>			
138.	24293 <i>Haliaeetus leucogaster</i> (White-bellied Sea-Eagle)			
139.	24295 <i>Haliastur sphenurus</i> (Whistling Kite)			
140.	24689 <i>Halobaena caerulea</i> (Blue Petrel)			
141.	25410 <i>Heleioporus eyrei</i> (Moaning Frog)			
142.	25119 <i>Hemiergis quadrilineata</i>			
143.	<i>Henicops dentatus</i>			
144.	<i>Heterodontus portusjacksoni</i>			
145.	47965 <i>Hieraaetus morphnoides</i> (Little Eagle)			
146.	25734 <i>Himantopus himantopus</i> (Black-winged Stilt)			
147.	24491 <i>Hirundo neoxena</i> (Welcome Swallow)			
148.	<i>Hogna crispipes</i>			
149.	24215 <i>Hydromys chrysogaster</i> (Water-rat, Rakali)		P4	
150.	43384 <i>Hydrophis platurus</i> (Yellow-bellied Seasnake)			
151.	<i>Hydroprogne caspia</i>			
152.	<i>Idiomma blackwalli</i>			
153.	<i>Isometroides vespus</i>			
154.	25478 <i>Isodon obesulus</i> (Southern Brown Bandicoot)		P4	
155.	24153 <i>Isodon obesulus</i> subsp. <i>fusciventer</i> (Quenda, Southern Brown Bandicoot)		P4	
156.	<i>Isopoda leishmanni</i>			
157.	47975 <i>Ixobrychus dubius</i> (Australian Little Bittern)		P4	
158.	24347 <i>Ixobrychus flavicollis</i> subsp. <i>australis</i> (Australian Black Bittern)		P1	
159.	24070 <i>Kogia breviceps</i> (Pygmy Sperm Whale)			
160.	<i>Lampona cylindrata</i>			
161.	25637 <i>Larus novaehollandiae</i> (Silver Gull)			
162.	25638 <i>Larus pacificus</i> (Pacific Gull)			
163.	<i>Latrodectus hasseltii</i>			
164.	25133 <i>Lerista elegans</i>			
165.	25148 <i>Lerista lineopunctulata</i>			
166.	25165 <i>Lerista praepedita</i>			
167.	25005 <i>Lialis burtonis</i>			
168.	25661 <i>Lichmera indistincta</i> (Brown Honeyeater)			
169.	25415 <i>Limnodynastes dorsalis</i> (Western Banjo Frog)			
170.	25741 <i>Limosa limosa</i> (Black-tailed Godwit)		IA	
171.	25378 <i>Litoria adelaidensis</i> (Slender Tree Frog)			
172.	25388 <i>Litoria moorei</i> (Motorbike Frog)			
173.	<i>Lophocentropus isura</i>			
174.	<i>Lycosa australicola</i>			
175.	<i>Lycosa gilberta</i>			
176.	24690 <i>Macronectes giganteus</i> (Southern Giant Petrel)		IA	
177.	24132 <i>Macropus fuliginosus</i> (Western Grey Kangaroo)			
178.	24326 <i>Malacorhynchus membranaceus</i> (Pink-eared Duck)			
179.	25651 <i>Malurus lamberti</i> (Variegated Fairy-wren)			
180.	25652 <i>Malurus leucopterus</i> (White-winged Fairy-wren)			

Name ID	Species Name	Naturalised	Conservation Code	¹ Endemic To Query Area
181.	25654 <i>Malurus splendens</i> (Splendid Fairy-wren)			
182.	24583 <i>Manorina flavigula</i> (Yellow-throated Miner)			
183.	<i>Masasteron sampeyae</i>			
184.	<i>Masasteron tuart</i>			
185.	25758 <i>Megalurus gramineus</i> (Little Grassbird)			
186.	25663 <i>Melithreptus brevirostris</i> (Brown-headed Honeyeater)			
187.	25184 <i>Menetia greyii</i>			
188.	24598 <i>Merops ornatus</i> (Rainbow Bee-eater)		IA	
189.	<i>Meuschenia freycineti</i>			
190.	<i>Microcarbo melanoleucos</i>			
191.	25693 <i>Microeca fascians</i> (Jacky Winter)			
192.	<i>Missulena granulosa</i>			
193.	25240 <i>Morelia spilota</i> subsp. <i>imbricata</i> (Carpet Python)			
194.	25192 <i>Morethia obscura</i>			
195.	24223 <i>Mus musculus</i> (House Mouse)	Y		
196.	<i>Myandra cambridgei</i>			
197.	25610 <i>Myiagra inquieta</i> (Restless Flycatcher)			
198.	25420 <i>Myobatrachus gouldii</i> (Turtle Frog)			
199.	25344 <i>Natator depressus</i> (Flatback Turtle)		T	
200.	<i>Neatypus obliquus</i>			
201.	25248 <i>Neelaps bimaculatus</i> (Black-naped Snake)			
202.	25249 <i>Neelaps calonotos</i> (Black-striped Snake)		P3	
203.	24738 <i>Neophema elegans</i> (Elegant Parrot)			
204.	<i>Nephila edulis</i>			
205.	25252 <i>Notechis scutatus</i> (Tiger Snake)			
206.	<i>Notiasemus glauerti</i>			
207.	25564 <i>Nycticorax caledonicus</i> (Rufous Night Heron)			
208.	<i>Ocrisiona leucocomis</i>			
209.	24407 <i>Ocyphaps lophotes</i> (Crested Pigeon)			
210.	24085 <i>Oryctolagus cuniculus</i> (Rabbit)	Y		
211.	24328 <i>Oxyura australis</i> (Blue-billed Duck)		P4	
212.	25680 <i>Pachycephala rufiventris</i> (Rufous Whistler)			
213.	24624 <i>Pachycephala rufiventris</i> subsp. <i>rufiventris</i> (Rufous Whistler)			
214.	24693 <i>Pachyptila desolata</i> (Antarctic Prion)			
215.	<i>Pandion cristatus</i>			
216.	25253 <i>Parasuta gouldii</i>			
217.	25255 <i>Parasuta nigriceps</i>			
218.	25681 <i>Pardalotus punctatus</i> (Spotted Pardalote)			
219.	25682 <i>Pardalotus striatus</i> (Striated Pardalote)			
220.	25687 <i>Passer domesticus</i> (House Sparrow)	Y		
221.	24641 <i>Passer domesticus</i> subsp. <i>domesticus</i> (House Sparrow)	Y		Y
222.	24648 <i>Pelecanus conspicillatus</i> (Australian Pelican)			
223.	48060 <i>Petrochelidon ariel</i> (Fairy Martin)			
224.	48061 <i>Petrochelidon nigricans</i> (Tree Martin)			
225.	48066 <i>Petroica boodang</i> (Scarlet Robin)			
226.	24659 <i>Petroica goodenovii</i> (Red-capped Robin)			
227.	25697 <i>Phalacrocorax carbo</i> (Great Cormorant)			
228.	25698 <i>Phalacrocorax melanoleucos</i> (Little Pied Cormorant)			
229.	24667 <i>Phalacrocorax sulcirostris</i> (Little Black Cormorant)			
230.	25699 <i>Phalacrocorax varius</i> (Pied Cormorant)			
231.	24409 <i>Phaps chalcoptera</i> (Common Bronzewing)			
232.	48071 <i>Phylidonyris niger</i> (White-cheeked Honeyeater)			
233.	24596 <i>Phylidonyris novaehollandiae</i> (New Holland Honeyeater)			
234.	<i>Phyllopteryx taeniolatus</i>			
235.	24841 <i>Platalea flavipes</i> (Yellow-billed Spoonbill)			
236.	24842 <i>Platalea regia</i> (Royal Spoonbill)			
237.	<i>Platycephalus endrachtensis</i>			
238.	<i>Platycephalus</i> sp.			
239.	24747 <i>Platycercus spurius</i> (Red-capped Parrot)			
240.	25721 <i>Platycercus zonarius</i> (Australian Ringneck, Ring-necked Parrot)			
241.	24843 <i>Plegadis falcinellus</i> (Glossy Ibis)		IA	
242.	25007 <i>Pletholax gracilis</i> subsp. <i>gracilis</i> (Keeled Legless Lizard)			
243.	25703 <i>Podargus strigoides</i> (Tawny Frogmouth)			
244.	24679 <i>Podargus strigoides</i> subsp. <i>brachypterus</i> (Tawny Frogmouth)			
245.	25704 <i>Podiceps cristatus</i> (Great Crested Grebe)			
246.	24680 <i>Podiceps cristatus</i> subsp. <i>australis</i> (Great Crested Grebe)			
247.	24907 <i>Pogona minor</i> subsp. <i>minor</i> (Dwarf Bearded Dragon)			
248.	24681 <i>Poliocephalus poliocephalus</i> (Hoary-headed Grebe)			
249.	25722 <i>Polytelis anthopeplus</i> (Regent Parrot)			
250.	25731 <i>Porphyrio porphyrio</i> (Purple Swamphen)			

Name ID	Species Name	Naturalised	Conservation Code	¹ Endemic To Query Area
251.	24767 <i>Porphyrio porphyrio</i> subsp. <i>bellus</i> (Purple Swamphen)			
252.	24769 <i>Porzana fluminea</i> (Australian Spotted Crane)			
253.	25732 <i>Porzana pusilla</i> (Baillon's Crane)			
254.	24771 <i>Porzana tabuensis</i> (Spotless Crane)			
255.	25708 <i>Procellaria aequinoctialis</i> (White-chinned Petrel)		T	
256.	<i>Pseudogobius olorum</i>			
257.	24230 <i>Pseudomys albocinereus</i> (Ash-grey Mouse)			
258.	25511 <i>Pseudonaja affinis</i> (Dugite)			
259.	25259 <i>Pseudonaja affinis</i> subsp. <i>affinis</i> (Dugite)			
260.	25433 <i>Pseudophryne guentheri</i> (Crawling Toadlet)			
261.	<i>Pseudorhombus jenynsii</i>			
262.	24702 <i>Pterodroma brevirostris</i> (Kerguelen Petrel)			
263.	<i>Purpureicephalus spurius</i>			
264.	25008 <i>Pygopus lepidopodus</i> (Common Scaly Foot)			
265.	24243 <i>Rattus fuscipes</i> (Western Bush Rat)			
266.	24245 <i>Rattus rattus</i> (Black Rat)	Y		
267.	24776 <i>Recurvirostra novaehollandiae</i> (Red-necked Avocet)			
268.	48096 <i>Rhipidura albiscapa</i> (Grey Fantail)			
269.	25614 <i>Rhipidura leucophrys</i> (Willie Wagtail)			
270.	24454 <i>Rhipidura leucophrys</i> subsp. <i>leucophrys</i> (Willie Wagtail)			
271.	25534 <i>Sericornis frontalis</i> (White-browed Scrubwren)			
272.	<i>Simonus lineatus</i>			Y
273.	25266 <i>Simoselaps bertholdi</i> (Jan's Banded Snake)			
274.	30948 <i>Smicromis brevirostris</i> (Weebill)			
275.	24530 <i>Sterna nereis</i> subsp. <i>nereis</i> (Fairy Tern)		T	
276.	24329 <i>Stictonetta naevosa</i> (Freckled Duck)			
277.	25597 <i>Strepera versicolor</i> (Grey Currawong)			
278.	25589 <i>Streptopelia chinensis</i> (Spotted Turtle-Dove)	Y		
279.	25590 <i>Streptopelia senegalensis</i> (Laughing Turtle-Dove)	Y		
280.	<i>Strongylura leiura</i>			
281.	24943 <i>Strophurus spinigerus</i> subsp. <i>inornatus</i>			
282.	24942 <i>Strophurus spinigerus</i> subsp. <i>spinigerus</i>			
283.	33992 <i>Synemon gratiosa</i> (Graceful Sunmoth)		P4	
284.	<i>Synothele mullaloo</i>			
285.	25705 <i>Tachybaptus novaehollandiae</i> (Australasian Grebe, Black-throated Grebe)			
286.	24682 <i>Tachybaptus novaehollandiae</i> subsp. <i>novaehollandiae</i> (Australasian Grebe, Black-throated Grebe)			
287.	24207 <i>Tachyglossus aculeatus</i> (Short-beaked Echidna)			
288.	24331 <i>Tadorna tadornoides</i> (Australian Shelduck, Mountain Duck)			
289.	<i>Thalasseus bergii</i>			
290.	24845 <i>Threskiornis spinicollis</i> (Straw-necked Ibis)			
291.	<i>Thysanophrys cirronasus</i>			
292.	25519 <i>Tiliqua rugosa</i>			
293.	25207 <i>Tiliqua rugosa</i> subsp. <i>rugosa</i>			
294.	25549 <i>Todiramphus sanctus</i> (Sacred Kingfisher)			
295.	<i>Torquigener vicinus</i>			
296.	48141 <i>Tribonyx ventralis</i> (Black-tailed Native-hen)			
297.	25723 <i>Trichoglossus haematodus</i> (Rainbow Lorikeet)			
298.	24755 <i>Trichoglossus haematodus</i> subsp. <i>moluccanus</i> (Rainbow Lorikeet)	Y		
299.	25521 <i>Trichosurus vulpecula</i> (Common Brushtail Possum)			
300.	24158 <i>Trichosurus vulpecula</i> subsp. <i>vulpecula</i> (Common Brushtail Possum)			
301.	24808 <i>Tringa nebularia</i> (Common Greenshank)		IA	
302.	24069 <i>Tursiops truncatus</i> (Bottlenose Dolphin)			
303.	24852 <i>Tyto alba</i> subsp. <i>delicatula</i> (Barn Owl)			
304.	24983 <i>Underwoodisaurus millii</i> (Barking Gecko)			
305.	<i>Urodacus novaehollandiae</i>			
306.	25218 <i>Varanus gouldii</i> (Bungarra or Sand Monitor)			
307.	25526 <i>Varanus tristis</i> (Racehorse Monitor)			
308.	<i>Venator immansueta</i>			
309.	<i>Venatrix pullastra</i>			
310.	25765 <i>Zosterops lateralis</i> (Grey-breasted White-eye, Silvereye)			

Chromista

311.	27117 <i>Padina gymnospora</i>			
312.	27258 <i>Sargassum spinuligerum</i>			
313.	27260 <i>Sargassum tristichum</i>			
314.	27273 <i>Scytothalia dorycarpa</i>			

Fungi

315.	38771 <i>Coltriciella dependens</i>			
316.	38780 <i>Crepidotus eucalyptorum</i>			

Name ID	Species Name	Naturalised	Conservation Code	¹ Endemic To Query Area
317.	47215 <i>Entoloma byssisedum</i>			
318.	<i>Gymnopilus allantopus</i>			
319.	<i>Gymnopilus purpuratus</i>			
320.	38791 <i>Hebeloma crustuliniforme</i>			
321.	46454 <i>Leucoagaricus leucothites</i>			
322.	<i>Panus fasciatus</i>			
323.	<i>Phellinus gilvus</i>			
324.	38830 <i>Psilocybe coprophila</i>			
325.	<i>Pycnoporus coccineus</i>			
326.	38835 <i>Royoporus badius</i>			
327.	<i>Schizophyllum commune</i>			
328.	38840 <i>Stereum hirsutum</i>			
329.	<i>Tremella mesenterica</i>			
330.	45907 <i>Ustilago trichophora</i>			Y

Plantae

331.	15466 <i>Acacia applanata</i>			
332.	3237 <i>Acacia benthamii</i>		P2	
333.	3262 <i>Acacia cochlearis</i> (Rigid Wattle)			
334.	3282 <i>Acacia cyclops</i> (Coastal Wattle)			
335.	11611 <i>Acacia lasiocarpa</i> var. <i>lasiocarpa</i>			
336.	15721 <i>Acacia lasiocarpa</i> var. <i>sedifolia</i>			
337.	17861 <i>Acacia longifolia</i>	Y		
338.	17464 <i>Acacia longifolia</i> subsp. <i>longifolia</i>	Y		
339.	15481 <i>Acacia pulchella</i> var. <i>glaberrima</i>			
340.	3525 <i>Acacia rostellifera</i> (Summer-scented Wattle)			
341.	3527 <i>Acacia saligna</i> (Orange Wattle, Kudjong)			
342.	30032 <i>Acacia saligna</i> subsp. <i>saligna</i>			
343.	3541 <i>Acacia sessilis</i>			
344.	3584 <i>Acacia truncata</i>			
345.	3602 <i>Acacia wilddenowiana</i> (Grass Wattle)			
346.	1208 <i>Acanthocarpus preissii</i>			
347.	11837 <i>Adenanthos cygnorum</i> subsp. <i>cygnorum</i> (Common Woollybush)			
348.	184 <i>Aira caryophyllea</i> (Silvery Hairgrass)	Y		
349.	1056 <i>Alexgeorgea nitens</i>			
350.	1728 <i>Allocasuarina fraseriana</i> (Sheoak, Kondil)			
351.	2652 <i>Alternanthera nodiflora</i> (Common Joyweed)			
352.	2653 <i>Alternanthera pungens</i> (Khaki Weed)	Y		
353.	6565 <i>Alyxia buxifolia</i> (Dysentery Bush)			
354.	25840 <i>Amaranthus blitum</i>	Y		
355.	20184 <i>Amphipogon laguroides</i> subsp. <i>laguroides</i>			
356.	6311 <i>Andersonia heterophylla</i>			
357.	11434 <i>Anigozanthos humilis</i> subsp. <i>humilis</i>			
358.	11261 <i>Anigozanthos manglesii</i> subsp. <i>manglesii</i>			
359.	6210 <i>Apium annuum</i>			
360.	8595 <i>Apium graveolens</i> (Wild Celery)	Y		
361.	7838 <i>Arctotheca calendula</i> (Cape Weed, African Marigold)	Y		
362.	7839 <i>Arctotheca populifolia</i> (Dune Arctotheca, Beach Pumpkin, Coast Capeweed, Beach Daisy)	Y		
363.	7840 <i>Arctotis stoechadifolia</i> (White Arctotis, Silver Arctotis)	Y		
364.	1264 <i>Arnocrinum preissii</i>			
365.	20752 <i>Asparagus aethiopicus</i>	Y		
366.	20283 <i>Astartea scoparia</i> (Common Astartea)			
367.	6323 <i>Astroloma ciliatum</i> (Candle Cranberry)			
368.	6331 <i>Astroloma microcalyx</i> (Native Cranberry)			
369.	6334 <i>Astroloma pallidum</i> (Kick Bush)			
370.	6339 <i>Astroloma xerophyllum</i>			
371.	35317 <i>Austrostipa mundula</i>		P3	
372.	17246 <i>Austrostipa nitida</i>			
373.	17254 <i>Austrostipa tenuifolia</i>			
374.	16346 <i>Bacopa monnieri</i>	Y		
375.	34161 <i>Baeckea</i> sp. <i>Limestone</i> (N. Gibson & M.N. Lyons 1425)		P1	
376.	1800 <i>Banksia attenuata</i> (Slender Banksia, Piara)			
377.	1822 <i>Banksia ilicifolia</i> (Holly-leaved Banksia)			
378.	1830 <i>Banksia littoralis</i> (Swamp Banksia, Pungura)			
379.	1834 <i>Banksia menziesii</i> (Firewood Banksia)			
380.	32077 <i>Banksia sessilis</i> var. <i>cygnorum</i>			
381.	32315 <i>Barbula calycina</i>			
382.	741 <i>Baumea articulata</i> (Jointed Rush)			
383.	743 <i>Baumea juncea</i> (Bare Twigrush)			
384.	745 <i>Baumea preissii</i>			

Name ID	Species Name	Naturalised	Conservation Code	¹ Endemic To Query Area
385.	5382 <i>Beaufortia elegans</i> (Elegant Beaufortia)			
386.	25788 <i>Billardiera fraseri</i> (Elegant Pronaya)			
387.	749 <i>Bolboschoenus caldwellii</i> (Marsh Club-rush)			
388.	17665 <i>Boronia purdieana</i> subsp. <i>purdieana</i>			
389.	11381 <i>Boronia ramosa</i> subsp. <i>anethifolia</i>			
390.	3710 <i>Bossiaea eriocarpa</i> (Common Brown Pea)			
391.	7867 <i>Brachyscome bellidioides</i>			
392.	7878 <i>Brachyscome iberidifolia</i>			
393.	11187 <i>Brassica barrelieri</i> subsp. <i>oxyrrhina</i> (Smooth-stem Turnip)	Y		
394.	3000 <i>Brassica tournefortii</i> (Mediterranean Turnip)	Y		
395.	244 <i>Briza maxima</i> (Blowfly Grass)	Y		
396.	245 <i>Briza minor</i> (Shivery Grass)	Y		
397.	247 <i>Bromus arenarius</i> (Sand Brome)			
398.	249 <i>Bromus diandrus</i> (Great Brome)	Y		
399.	32331 <i>Bryum lanatum</i>			
400.	12770 <i>Burchardia congesta</i>			
401.	1385 <i>Burchardia multiflora</i> (Dwarf Burchardia)			
402.	1276 <i>Caesia micrantha</i> (Pale Grass Lily)			
403.	3002 <i>Cakile maritima</i> (Sea Rocket)	Y		
404.	15330 <i>Caladenia arenicola</i>			
405.	1592 <i>Caladenia flava</i> (Cowslip Orchid)			
406.	15348 <i>Caladenia flava</i> subsp. <i>flava</i>			
407.	15360 <i>Caladenia longicauda</i> subsp. <i>borealis</i>			
408.	15361 <i>Caladenia longicauda</i> subsp. <i>calcigena</i>			
409.	15377 <i>Caladenia reptans</i> subsp. <i>reptans</i>			
410.	2848 <i>Calandrinia corrigioloides</i> (Strap Purslane)			
411.	19309 <i>Calectasia narragara</i>			
412.	10861 <i>Callistachys lanceolata</i> (Wonnich)			
413.	96 <i>Callitris preissii</i> (Rottnest Island Pine, Maro)			
414.	26534 <i>Callophycus dorsifer</i>			
415.	5415 <i>Calothamnus lateralis</i>			
416.	5426 <i>Calothamnus quadrifidus</i> (One-sided Bottlebrush, Kwojdjard)			
417.	35816 <i>Calothamnus quadrifidus</i> subsp. <i>quadrifidus</i>			
418.	5429 <i>Calothamnus sanguineus</i> (Silky-leaved Blood flower, Pindak)			
419.	5460 <i>Calytrix fraseri</i> (Pink Summer Calytrix)			
420.	5476 <i>Calytrix sapphirina</i>			
421.	32338 <i>Campylopus introflexus</i>	Y		
422.	3005 <i>Cardamine hirsuta</i> (Common Bittercress)	Y		
423.	18555 <i>Cardamine</i> sp. <i>Jandakot</i> (P. Luff s.n. 4/7/1969)	Y		
424.	753 <i>Carex appressa</i> (Tall Sedge)			
425.	754 <i>Carex divisa</i> (Divided Sedge)	Y		
426.	755 <i>Carex fascicularis</i> (Tassel Sedge)			
427.	43241 <i>Carex thecata</i>			
428.	2795 <i>Carpobrotus edulis</i> (Hottentot Fig)	Y		
429.	2798 <i>Carpobrotus virescens</i> (Coastal Pigface, Kolboko, Bain)			
430.	1162 <i>Cartonema phylloides</i>			
431.	2951 <i>Cassytha flava</i> (Dodder Laurel)			
432.	2957 <i>Cassytha racemosa</i> (Dodder Laurel)			
433.	18314 <i>Casuarina cunninghamiana</i> subsp. <i>cunninghamiana</i>	Y		
434.	13685 <i>Catapodium rigidum</i> (Rigid Fescue)	Y		
435.	27388 <i>Caulerpa sedoides</i> forma <i>geminata</i>			
436.	258 <i>Cenchrus ciliaris</i> (Buffel Grass)	Y		
437.	259 <i>Cenchrus echinatus</i> (Burrgrass)	Y		
438.	6214 <i>Centella asiatica</i>			
439.	1125 <i>Centrolepis drummondiana</i>			
440.	2889 <i>Cerastium glomeratum</i> (Mouse Ear Chickweed)	Y		
441.	32462 <i>Ceratodon purpureus</i> subsp. <i>convolutus</i>			
442.	18156 <i>Chamaecytisus palmensis</i> (Tagasaste)	Y		
443.	5498 <i>Chamelaucium uncinatum</i> (Geraldton Wax)			
444.	1513 <i>Chasmanthe floribunda</i> (African Cornflag)	Y		
445.	2490 <i>Chenopodium glaucum</i> (Glaucous Goosefoot)	Y		
446.	2491 <i>Chenopodium macrospermum</i>	Y		
447.	17833 <i>Chordifex microcodon</i>			
448.	26665 <i>Clavicornium ovatum</i>			
449.	2929 <i>Clematis pubescens</i> (Common Clematis)			
450.	26675 <i>Codium laminarioides</i>			
451.	4550 <i>Comesperma calymega</i> (Blue-spike Milkwort)			
452.	15607 <i>Conospermum acerosum</i> subsp. <i>acerosum</i>			
453.	15516 <i>Conospermum canaliculatum</i> subsp. <i>canaliculatum</i>			
454.	1876 <i>Conospermum incurvum</i> (Plume Smokebush)			

Name ID	Species Name	Naturalised	Conservation Code	¹ Endemic To Query Area
455.	6347 <i>Conostephium minus</i> (Pink-tipped Pearl flower)			
456.	6348 <i>Conostephium pendulum</i> (Pearl Flower)			
457.	6349 <i>Conostephium preissii</i>			
458.	1418 <i>Conostylis aculeata</i> (Prickly Conostylis)			
459.	11513 <i>Conostylis aculeata</i> subsp. <i>cygnorum</i>			
460.	1425 <i>Conostylis bracteata</i>		P3	
461.	1427 <i>Conostylis candicans</i> (Grey Cottonhead)			
462.	11438 <i>Conostylis candicans</i> subsp. <i>candicans</i>			
463.	1436 <i>Conostylis juncea</i>			
464.	11597 <i>Conostylis setigera</i> subsp. <i>setigera</i>			
465.	7939 <i>Conyza bonariensis</i> (Flaxleaf Fleabane)	Y		
466.	20074 <i>Conyza sumatrensis</i>	Y		
467.	48259 <i>Cortaderia selloana</i> subsp. <i>selloana</i>	Y		
468.	11283 <i>Corynotheca micrantha</i> var. <i>micrantha</i>			
469.	7945 <i>Cotula coronopifolia</i> (Waterbuttons)	Y		
470.	3136 <i>Crassula alata</i>	Y		
471.	3137 <i>Crassula colorata</i> (Dense Stonecrop)			
472.	3140 <i>Crassula glomerata</i>	Y		
473.	3146 <i>Crassula thunbergiana</i>	Y		
474.	15114 <i>Cyanicula gemmata</i>			
475.	283 <i>Cynodon dactylon</i> (Couch)	Y		
476.	18318 <i>Cyperus involucratus</i>	Y		
477.	816 <i>Cyperus tenuiflorus</i> (Scaly Sedge)	Y		
478.	10916 <i>Cyrtostylis huegelii</i>			
479.	1218 <i>Dasypogon bromeliifolius</i> (Pineapple Bush)			
480.	6218 <i>Daucus glochidiatus</i> (Australian Carrot)			
481.	3807 <i>Daviesia divaricata</i> (Marno)			
482.	18560 <i>Daviesia divaricata</i> subsp. <i>divaricata</i>			
483.	16585 <i>Daviesia nudiflora</i> subsp. <i>nudiflora</i>			
484.	3832 <i>Daviesia physodes</i>			
485.	3845 <i>Daviesia triflora</i>			
486.	17663 <i>Desmocladus asper</i>			
487.	1259 <i>Dianella revoluta</i> (Blueberry Lily)			
488.	31597 <i>Dichondra micrantha</i>	Y		Y
489.	26763 <i>Dictyomenia tridens</i>			
490.	320 <i>Digitaria sanguinalis</i> (Crab Grass)	Y		
491.	4453 <i>Diplolaena angustifolia</i> (Yanchep Rose)			
492.	3011 <i>Diploaxis muralis</i> (Wall Rocket)	Y		
493.	7054 <i>Dischisma arenarium</i>	Y		
494.	11049 <i>Diuris corymbosa</i>			
495.	12939 <i>Diuris magnifica</i>			
496.	3095 <i>Drosera erythrorhiza</i> (Red Ink Sundew)			
497.	3106 <i>Drosera macrantha</i> (Bridal Rainbow)			
498.	14298 <i>Drosera macrantha</i> subsp. <i>macrantha</i>			
499.	3109 <i>Drosera menziesii</i> (Pink Rainbow)			
500.	13216 <i>Drosera menziesii</i> subsp. <i>penicillaris</i>			
501.	3116 <i>Drosera omissa</i> (Bright Sundew)			
502.	32351 <i>Eccremidium pulchellum</i>			
503.	11485 <i>Ehrharta brevifolia</i> var. <i>cuspidata</i>	Y		
504.	347 <i>Ehrharta calycina</i> (Perennial Veldt Grass)	Y		
505.	349 <i>Ehrharta longiflora</i> (Annual Veldt Grass)	Y		
506.	1643 <i>Elythranthera brunonis</i> (Purple Enamel Orchid)			
507.	6132 <i>Epilobium ciliatum</i>	Y		
508.	6133 <i>Epilobium hirtigerum</i> (Hairy Willow Herb)			
509.	14289 <i>Epilobium tetragonum</i> subsp. <i>tetragonum</i>	Y		
510.	376 <i>Eragrostis curvula</i> (African Lovegrass)	Y		
511.	14104 <i>Eremaea pauciflora</i> var. <i>pauciflora</i>			
512.	7215 <i>Eremophila glabra</i> (Tar Bush)			
513.	15410 <i>Eriochilus dilatatus</i> subsp. <i>dilatatus</i>			
514.	4333 <i>Erodium cicutarium</i> (Common Storksbill)	Y		
515.	15446 <i>Eryngium pinnatifidum</i> subsp. <i>pinnatifidum</i>			
516.	26821 <i>Erythroclonium muelleri</i>			
517.	5659 <i>Eucalyptus gomphocephala</i> (Tuart, Duart)			
518.	5708 <i>Eucalyptus marginata</i> (Jarrah, Djara)			
519.	13547 <i>Eucalyptus marginata</i> subsp. <i>marginata</i> (Jarrah)			
520.	5763 <i>Eucalyptus rudis</i> (Flooded Gum, Kulurda)			
521.	5790 <i>Eucalyptus todtiana</i> (Coastal Blackbutt)			
522.	3872 <i>Euchilopsis linearis</i> (Swamp Pea)			
523.	4638 <i>Euphorbia peplus</i> (Petty Spurge)	Y		
524.	4648 <i>Euphorbia terracina</i> (Geraldton Carnation Weed)	Y		

Name ID	Species Name	Naturalised	Conservation Code	¹ Endemic To Query Area
525.	20162 <i>Fabronia hampeana</i>		P2	
526.	20216 <i>Ficinia nodosa</i> (Knotted Club Rush)			
527.	32369 <i>Fissidens tenellus</i>			
528.	11571 <i>Galenia pubescens</i> var. <i>pubescens</i>	Y		
529.	7976 <i>Galinsoga parviflora</i> (Potato Weed)	Y		
530.	7323 <i>Galium murale</i> (Small Goosegrass)	Y		
531.	20475 <i>Gastrolobium capitatum</i>			
532.	20483 <i>Gastrolobium linearifolium</i>			
533.	16311 <i>Gazania linearis</i>	Y		
534.	26850 <i>Gelinaria ulvoidea</i>			
535.	32380 <i>Gemmabryum pachythecum</i>			
536.	32381 <i>Gemmabryum preissianum</i>			
537.	4341 <i>Geranium solanderi</i> (Native Geranium)			
538.	1520 <i>Gladiolus caryophyllaceus</i> (Wild Gladiolus)	Y		
539.	11051 <i>Gomphocarpus physocarpus</i>	Y		
540.	11083 <i>Gompholobium scabrum</i>			
541.	3957 <i>Gompholobium tomentosum</i> (Hairy Yellow Pea)			
542.	6161 <i>Gonocarpus pithyoides</i>			
543.	1982 <i>Grevillea crithmifolia</i>			
544.	15839 <i>Grevillea preissii</i> subsp. <i>preissii</i>			
545.	<i>Grevillea</i> sp.			
546.	33737 <i>Grevillea</i> sp. Ocean Reef (D. Pike Joon 4)		P1	Y
547.	12824 <i>Grevillea vestita</i> subsp. <i>vestita</i>			
548.	5011 <i>Guichenotia ledifolia</i>			
549.	1468 <i>Haemodorum laxum</i>			
550.	2146 <i>Hakea costata</i> (Ribbed Hakea)			
551.	2175 <i>Hakea lissocarpa</i> (Honey Bush)			
552.	2214 <i>Hakea trifurcata</i> (Two-leaf Hakea)			
553.	3961 <i>Hardenbergia comptoniana</i> (Native Wisteria)			
554.	3016 <i>Heliophila pusilla</i>	Y		
555.	8084 <i>Helminthotheca echinoides</i> (Ox-tongue, Prickly Ox-tongue)	Y		
556.	439 <i>Hemarthra uncinata</i> (Matgrass)			
557.	6836 <i>Hemiandra incana</i>			
558.	6839 <i>Hemiandra pungens</i> (Snakebush)			
559.	1293 <i>Hensmania turbinata</i>			
560.	443 <i>Heteropogon contortus</i> (Bunch Speargrass)			
561.	5112 <i>Hibbertia aurea</i>			
562.	5117 <i>Hibbertia cuneiformis</i> (Cutleaf Hibbertia)			
563.	5134 <i>Hibbertia huegelii</i>			
564.	5135 <i>Hibbertia hypericoides</i> (Yellow Buttercups)			
565.	45534 <i>Hibbertia hypericoides</i> subsp. <i>hypericoides</i>			
566.	5154 <i>Hibbertia perfoliata</i>			
567.	5162 <i>Hibbertia racemosa</i> (Stalked Guinea Flower)			
568.	43280 <i>Hibbertia sericosepala</i>			
569.	5173 <i>Hibbertia subvaginata</i>			
570.	444 <i>Holcus lanatus</i> (Yorkshire Fog)	Y		
571.	6222 <i>Homalosciadium homalocarpum</i>			
572.	449 <i>Hordeum leporinum</i> (Barley Grass)	Y		
573.	3966 <i>Hovea pungens</i> (Devil's Pins, Puyenak)			
574.	3968 <i>Hovea trisperma</i> (Common Hovea)			
575.	5216 <i>Hybanthus calycinus</i> (Wild Violet)			
576.	26973 <i>Hypnea valentiae</i>			
577.	5817 <i>Hypocalymma angustifolium</i> (White Myrtle, Kudjid)			
578.	5825 <i>Hypocalymma robustum</i> (Swan River Myrtle)			
579.	8086 <i>Hypochoeris glabra</i> (Smooth Catsear)	Y		
580.	20200 <i>Isolepis cernua</i> var. <i>setiformis</i>			
581.	917 <i>Isolepis marginata</i> (Coarse Club-rush)			
582.	3992 <i>Isotropis cuneifolia</i> (Granny Bonnets)			
583.	4010 <i>Jacksonia floribunda</i> (Holly Pea)			
584.	4012 <i>Jacksonia furcellata</i> (Grey Stinkwood)			
585.	4027 <i>Jacksonia sericea</i> (Waldjumi)		P4	
586.	4029 <i>Jacksonia sternbergiana</i> (Stinkwood, Kapur)			
587.	1188 <i>Juncus pallidus</i> (Pale Rush)			
588.	4037 <i>Kennedia coccinea</i> (Coral Vine)			
589.	4044 <i>Kennedia prostrata</i> (Scarlet Runner)			
590.	26995 <i>Kuetzingia canaliculata</i>			
591.	1370 <i>Lachenalia reflexa</i>	Y		
592.	20019 <i>Lachnagrostis filiformis</i>			
593.	8096 <i>Lactuca serriola</i> (Prickly Lettuce)	Y		
594.	18585 <i>Lagenophora huegelii</i>			

Name ID	Species Name	Naturalised	Conservation Code	¹ Endemic To Query Area
595.	467 <i>Lagurus ovatus</i> (Hare's Tail Grass)	Y		
596.	4052 <i>Latrobea tenella</i>			
597.	27000 <i>Laurencia elata</i>			
598.	11911 <i>Laxmannia ramosa</i> subsp. <i>ramosa</i>			
599.	1309 <i>Laxmannia squarrosa</i>			
600.	7574 <i>Lechenaultia floribunda</i> (Free-flowering Leschenaultia)			
601.	6880 <i>Leonotis leonurus</i> (Lion's Ear)	Y		
602.	42742 <i>Lepidosperma calcicola</i>			
603.	937 <i>Lepidosperma longitudinale</i> (Pithy Sword-sedge)			
604.	944 <i>Lepidosperma scabrum</i>			
605.	15418 <i>Leptoceras menziesii</i>			
606.	2350 <i>Leptomeria pauciflora</i> (Sparse-flowered Currant Bush)			
607.	19821 <i>Lessertia frutescens</i>	Y		
608.	6360 <i>Leucopogon australis</i> (Spiked Beard-heath)			
609.	6405 <i>Leucopogon insularis</i>			
610.	40801 <i>Leucopogon maritimus</i>		P1	
611.	6425 <i>Leucopogon oxycedrus</i>			
612.	6427 <i>Leucopogon parviflorus</i> (Coast Beard-heath)			
613.	6434 <i>Leucopogon polymorphus</i>			
614.	6436 <i>Leucopogon propinquus</i>			
615.	40803 <i>Leucopogon squarrosus</i> subsp. <i>squarrosus</i>			
616.	6489 <i>Limonium sinuatum</i> (Perennial Sea Lavender)	Y		
617.	36160 <i>Liparophyllum capitatum</i>			
618.	7408 <i>Lobelia tenuior</i> (Slender Lobelia)			
619.	36860 <i>Lobelia tenuior</i> subsp. <i>dictyosperma</i>			Y
620.	475 <i>Lolium multiflorum</i> (Italian Ryegrass)	Y		
621.	1231 <i>Lomandra maritima</i>			
622.	1232 <i>Lomandra micrantha</i> (Small-flower Mat-rush)			
623.	1234 <i>Lomandra nigricans</i>			
624.	1239 <i>Lomandra preissii</i>			
625.	1246 <i>Lomandra suaveolens</i>			
626.	34736 <i>Lysinema pentapetalum</i>			
627.	5281 <i>Lythrum hyssopifolia</i> (Lesser Loosestrife)	Y		
628.	2838 <i>Macarthuria apetala</i>			
629.	25819 <i>Marianthus paralius</i>		T	
630.	4079 <i>Medicago polymorpha</i> (Burr Medic)	Y		
631.	34676 <i>Meionectes brownii</i> (Swamp Raspwort)			
632.	5887 <i>Melaleuca cardiophylla</i> (Tangling Melaleuca)			
633.	5920 <i>Melaleuca huegelii</i> (Chenille Honeymyrtle)			
634.	13271 <i>Melaleuca huegelii</i> subsp. <i>huegelii</i>			
635.	5952 <i>Melaleuca preissiana</i> (Moonah)			
636.	5959 <i>Melaleuca raphiophylla</i> (Swamp Paperbark)			
637.	5964 <i>Melaleuca seriata</i>			
638.	18598 <i>Melaleuca systema</i>			
639.	5983 <i>Melaleuca trichophylla</i>			
640.	4516 <i>Melia azedarach</i> (White Cedar)			
641.	4085 <i>Melilotus indicus</i>	Y		
642.	953 <i>Mesomelaena graciliceps</i>			
643.	955 <i>Mesomelaena pseudostygia</i>			
644.	485 <i>Microlaena stipoides</i> (Weeping Grass)			
645.	15419 <i>Microtis media</i> subsp. <i>media</i>			
646.	8105 <i>Millotia myosotidifolia</i>			
647.	4100 <i>Mirbelia spinosa</i>			
648.	29418 <i>Monoculus monstrosus</i>	Y		
649.	19179 <i>Moraea flaccida</i> (One-leaf Cape Tulip)	Y		
650.	2415 <i>Muehlenbeckia polybotrya</i>			
651.	7289 <i>Myoporum caprarioides</i> (Slender Myoporum)			
652.	7291 <i>Myoporum insulare</i> (Blueberry Tree, boobialla)			
653.	6199 <i>Myriophyllum tillaeoides</i>			
654.	19161 <i>Nemesia strumosa</i>	Y		
655.	27103 <i>Nizyenia conferta</i>			
656.	2401 <i>Nuytsia floribunda</i> (Christmas Tree, Mudja)			
657.	16390 <i>Oenothera drummondii</i> subsp. <i>drummondii</i>	Y		
658.	6503 <i>Olea europaea</i> (Olive)	Y		
659.	8127 <i>Olearia axillaris</i> (Coastal Daisybush)			
660.	8149 <i>Olearia rudis</i> (Rough Daisybush)			
661.	18255 <i>Opercularia vaginata</i> (Dog Weed)			
662.	7122 <i>Orobancha minor</i> (Lesser Broomrape)	Y		
663.	11749 <i>Orthrosanthus laxus</i> var. <i>laxus</i> (Morning Iris)			
664.	1762 <i>Parietaria debilis</i> (Pellitory)			

Name ID	Species Name	Naturalised	Conservation Code	¹ Endemic To Query Area
665.	532 <i>Paspalum urvillei</i> (Vasey Grass)	Y		
666.	533 <i>Paspalum vaginatum</i> (Salt Water Couch)			
667.	30472 <i>Patersonia occidentalis</i> var. <i>occidentalis</i>			
668.	4343 <i>Pelargonium capitatum</i> (Rose Pelargonium)	Y		
669.	40423 <i>Pentameris airoides</i> (False Hairgrass)	Y		
670.	16477 <i>Pericalymma ellipticum</i> var. <i>ellipticum</i>			
671.	13911 <i>Persicaria decipiens</i>			
672.	16984 <i>Persicaria lapathifolia</i>	Y		
673.	2273 <i>Persoonia saccata</i> (Snottygobble)			
674.	20368 <i>Petrophile axillaris</i>			
675.	2286 <i>Petrophile brevifolia</i>			
676.	18529 <i>Philotheca spicata</i> (Pepper and Salt)			
677.	6734 <i>Phyla nodiflora</i> var. <i>nodiflora</i>	Y		
678.	4675 <i>Phyllanthus calycinus</i> (False Boronia)			
679.	17794 <i>Phyllanthus tenellus</i>	Y		
680.	2793 <i>Phytolacca octandra</i> (Red Ink Plant)	Y		
681.	5232 <i>Pimelea argentea</i> (Silvery Leaved Pimelea)			
682.	5237 <i>Pimelea calcicola</i>		P3	
683.	5244 <i>Pimelea floribunda</i>			
684.	5254 <i>Pimelea leucantha</i>			
685.	5268 <i>Pimelea sulphurea</i> (Yellow Banjine)			
686.	18352 <i>Pithocarpa pulchella</i> var. <i>melanostigma</i>			
687.	18353 <i>Pithocarpa pulchella</i> var. <i>pulchella</i>			
688.	19745 <i>Pittosporum ligustrifolium</i>			
689.	7304 <i>Plantago major</i> (Greater Plantain)	Y		
690.	571 <i>Poa annua</i> (Winter Grass)	Y		
691.	577 <i>Poa poiformis</i> (Coastal Poa)			
692.	578 <i>Poa porphyroclados</i>			
693.	8175 <i>Podolepis gracilis</i> (Slender Podolepis)			
694.	8179 <i>Podolepis nutans</i> (Nodding Podolepis)			
695.	8184 <i>Podothea gnaphalioides</i> (Golden Long-heads)			
696.	582 <i>Polypogon monspeliensis</i> (Annual Beardgrass)	Y		
697.	4689 <i>Poranthera ericoides</i> (Heath Poranthera)			
698.	4691 <i>Poranthera microphylla</i> (Small Poranthera)			
699.	110 <i>Potamogeton drummondii</i>			
700.	1672 <i>Prasophyllum fimbria</i> (Fringed Leek Orchid)			
701.	8189 <i>Pseudognaphalium luteoalbum</i> (Jersey Cudweed)			
702.	41651 <i>Pteridium esculentum</i> subsp. <i>esculentum</i>			
703.	<i>Pterostylis</i> aff. <i>nana</i>			
704.	12217 <i>Pterostylis sanguinea</i>			
705.	27206 <i>Ptilophora prolifera</i>			
706.	2718 <i>Ptilotus drummondii</i> (Narrowleaf Mulla Mulla)			
707.	11260 <i>Ptilotus drummondii</i> var. <i>drummondii</i> (Pussytail)			
708.	2742 <i>Ptilotus manglesii</i> (Pom Poms, Mulamula)			
709.	15856 <i>Ptilotus sericostachyus</i> subsp. <i>sericostachyus</i>			
710.	4181 <i>Pultenaea reticulata</i>			
711.	16367 <i>Pyrorchis nigricans</i> (Red beaks, Elephants ears)			
712.	32480 <i>Racopilum cuspidigerum</i> var. <i>convolutaceum</i>			
713.	6014 <i>Regelia inops</i>			
714.	19183 <i>Retama raetam</i>	Y		
715.	18547 <i>Rhadinothamnus anceps</i>			
716.	11341 <i>Rhagodia baccata</i> subsp. <i>baccata</i>			
717.	19942 <i>Ricinocarpos undulatus</i>			
718.	1556 <i>Romulea rosea</i> (Guildford Grass)	Y		
719.	44608 <i>Rosulabryum billardieri</i>			
720.	2429 <i>Rumex acetosella</i> (Sorrel)	Y		
721.	40426 <i>Rytidosperma occidentale</i>			
722.	2906 <i>Sagina apetala</i> (Annual Pearlwort)	Y		
723.	2591 <i>Sarcocornia blackiana</i>			
724.	17543 <i>Sarcozona bicarinata</i>		P3	
725.	7603 <i>Scaevola canescens</i> (Grey Scaevola)			
726.	7606 <i>Scaevola crassifolia</i> (Thick-leaved Fan-flower)			
727.	7614 <i>Scaevola globulifera</i>			
728.	7626 <i>Scaevola nitida</i> (Shining Fanflower)			
729.	13181 <i>Scaevola repens</i> var. <i>angustifolia</i>			
730.	13152 <i>Scaevola thesioides</i> subsp. <i>thesioides</i>			
731.	11027 <i>Schinus terebinthifolius</i>	Y		
732.	27268 <i>Schizymenia dubyi</i>			
733.	969 <i>Schoenoplectus validus</i> (Lake Club-rush)			
734.	984 <i>Schoenus curvifolius</i>			

Name ID	Species Name	Naturalised	Conservation Code	¹ Endemic To Query Area
735.	992 <i>Schoenus grandiflorus</i> (Large Flowered Bogrush)			
736.	25884 <i>Senecio pinnatifolius</i> var. <i>latilobus</i>			
737.	8220 <i>Senecio vulgaris</i> (Common Groundsel)	Y		
738.	2909 <i>Silene gallica</i> (French Catchfly)	Y		
739.	2910 <i>Silene nocturna</i> (Mediterranean Catchfly)	Y		
740.	7020 <i>Solanum linnaeanum</i> (Apple of Sodom)	Y		
741.	47173 <i>Solanum lycopersicum</i> (Tomato)	Y		
742.	7022 <i>Solanum nigrum</i> (Black Berry Nightshade)	Y		
743.	<i>Solanum physalifolium</i> var. <i>nitidibaccatum</i>			
744.	7037 <i>Solanum symonii</i>			
745.	8231 <i>Sonchus oleraceus</i> (Common Sowthistle)	Y		
746.	1312 <i>Sowerbaea laxiflora</i> (Purple Tassels)			
747.	624 <i>Spinifex hirsutus</i> (Hairy Spinifex)			
748.	27301 <i>Spongoecolium conspicuum</i>			
749.	635 <i>Sporobolus virginicus</i> (Marine Couch)			
750.	4828 <i>Spyridium globulosum</i> (Basket Bush)			
751.	9069 <i>Stackhousia huegelii</i>			
752.	2918 <i>Stellaria media</i> (Chickweed)	Y		
753.	15066 <i>Stenanthemum notiale</i> subsp. <i>chamelum</i>			
754.	19403 <i>Stenopetalum gracile</i>			
755.	7679 <i>Stylidium adpressum</i> (Trigger-on-stilts)			
756.	25831 <i>Stylidium araeophyllum</i> (Stilt Walker)			
757.	7693 <i>Stylidium brunonianum</i> (Pink Fountain Triggerplant)			
758.	7710 <i>Stylidium cygnorum</i>			
759.	11808 <i>Stylidium diuroides</i> subsp. <i>diuroides</i>			
760.	25801 <i>Stylidium hesperium</i>			
761.	25829 <i>Stylidium neurophyllum</i> (Coastal Plain Triggerplant)			
762.	25800 <i>Stylidium paludicola</i>		P3	
763.	48297 <i>Styphelia filifolia</i>		P3	
764.	15532 <i>Synaphea spinulosa</i> subsp. <i>spinulosa</i>			
765.	32437 <i>Syntrichia antarctica</i>			
766.	32438 <i>Syntrichia pagorum</i>			
767.	45613 <i>Taraxacum khatoonae</i>	Y		
768.	4256 <i>Templetonia retusa</i> (Cockies Tongues)			
769.	2791 <i>Tersonia cyathiflora</i> (Button Creeper)			
770.	2820 <i>Tetragonia decumbens</i> (Sea Spinach)	Y		
771.	2824 <i>Tetragonia tetragonoides</i> (New Zealand Spinach)			
772.	20649 <i>Tetrapanax papyrifer</i>	Y		Y
773.	1036 <i>Tetraria octandra</i>			
774.	35581 <i>Tetraria</i> sp. <i>Chandala</i> (G.J. Keighery 17055)		P2	
775.	35582 <i>Tetraria</i> sp. <i>Mt Madden</i> (C.D. Turley 40 BP/897)			
776.	1708 <i>Thelymitra fuscolutea</i> (Chestnut Sun Orchid)			
777.	1717 <i>Thelymitra variegata</i> (Queen of Sheba)		P2	
778.	6280 <i>Trachymene pilosa</i> (Native Parsnip)			
779.	32450 <i>Trichostomum eckelianum</i>			
780.	1361 <i>Tricoryne elatior</i> (Yellow Autumn Lily)			
781.	4291 <i>Trifolium arvense</i> (Hare's Foot Clover)	Y		
782.	4298 <i>Trifolium hirtum</i> (Rose Clover)	Y		
783.	14738 <i>Trifolium resupinatum</i> var. <i>resupinatum</i>	Y		
784.	11665 <i>Trymalium ledifolium</i> var. <i>ledifolium</i>			
785.	8255 <i>Ursinia anthemoides</i> (Ursinia)	Y		
786.	7125 <i>Utricularia australis</i>			
787.	7131 <i>Utricularia dichotoma</i> (Fairy Aprons)			
788.	8257 <i>Vellereophyton dealbatum</i> (White Cudweed)	Y		
789.	6077 <i>Verticordia drummondii</i> (Drummond's Featherflower)			
790.	6101 <i>Verticordia nitens</i> (Morrison Featherflower, Kodjeningara)			
791.	6103 <i>Verticordia ovalifolia</i>			
792.	4322 <i>Vicia sativa</i> (Common Vetch)	Y		
793.	11474 <i>Vicia sativa</i> subsp. <i>nigra</i>	Y		
794.	11137 <i>Vulpia fasciculata</i>	Y		
795.	724 <i>Vulpia myuros</i> (Rat's Tail Fescue)	Y		
796.	7384 <i>Wahlenbergia capensis</i> (Cape Bluebell)	Y		
797.	7386 <i>Wahlenbergia gracilentia</i> (Annual Bluebell)			
798.	7388 <i>Wahlenbergia multicaulis</i>			
799.	8282 <i>Waitzia suaveolens</i> (Fragrant Waitzia)			
800.	17910 <i>Washingtonia filifera</i>	Y		
801.	1398 <i>Wurmbea monantha</i>			
802.	1401 <i>Wurmbea pygmaea</i>			
803.	8286 <i>Xanthium occidentale</i> (Noogoora Burr)	Y		
804.	1256 <i>Xanthorrhoea preissii</i> (Grass tree, Palga)			

	Name ID	Species Name	Naturalised	Conservation Code	¹ Endemic To Query Area
805.	6289	<i>Xanthosia huegelii</i>			
806.	44861	<i>Xerochrysum macranthum</i>			
807.	2331	<i>Xylomelum occidentale</i> (Woody Pear, Djandin)			
808.	36218	<i>Zygodon menziesii</i>			

Protozoa

809.	38967	<i>Arcyria incarnata</i>			
810.	38969	<i>Arcyria minuta</i>			
811.	38971	<i>Arcyria occidentalis</i>			Y
812.	38978	<i>Badhamia panicea</i>			
813.	38998	<i>Craterium minutum</i>			
814.	38999	<i>Cribraria argillacea</i>			Y
815.	39020	<i>Didymium difforme</i>			
816.	39057	<i>Perichaena corticalis</i>			
817.	39058	<i>Perichaena depressa</i>			
818.	39059	<i>Perichaena vermicularis</i>			
819.	39077	<i>Physarum straminipes</i>			Y
820.	39094	<i>Trichia affinis</i>			
821.	39098	<i>Trichia favoginea</i>			

Conservation Codes

T - Rare or likely to become extinct
X - Presumed extinct
IA - Protected under international agreement
S - Other specially protected fauna
1 - Priority 1
2 - Priority 2
3 - Priority 3
4 - Priority 4
5 - Priority 5

¹ For NatureMap's purposes, species flagged as endemic are those whose records are wholly contained within the search area. Note that only those records complying with the search criterion are included in the calculation. For example, if you limit records to those from a specific datasource, only records from that datasource are used to determine if a species is restricted to the query area.

360

environmental



10 Bermondsey Street West Leederville WA 6007 **t** (+618) 9388 8360 **f** (+618) 9381 2360
PO BOX 14, West Perth WA 6872
w 360environmental.com.au **e** admin@360environmental.com.au

● people ● planet ● professional