

Imagery: OpenStreetMap


<p>0 14 km</p> <p>Scale: 1:750,000 MGA94 (Zone 50)</p>	 <p>Mattiske Consulting Pty Ltd</p> <p>28 Central Road, Kalamunda WA 6076 ~ Tel: 9257 1625 ~ Fax: 9257 1640</p>	<p>Arrowsmith Central Project</p> <p>Locality</p>
<p>CAD Ref: a2602_f23_01</p> <p>Date: April 2021</p>	<p>Author: E M Mattiske</p> <p>Drawn: CAD Resources ~ www.cadresources.com.au</p> <p>Tel: (08) 9246 3242 ~ Fax (08) 9246 3202</p>	<p>MCPL Ref: VRX2101/004/21</p>
<p>Rev: A A4</p>	<p>Figure: 1</p>	

Figure 1: Regional location of the Proposed Action



Figure 2: Sod removal of the VDT process using a modified front end loader

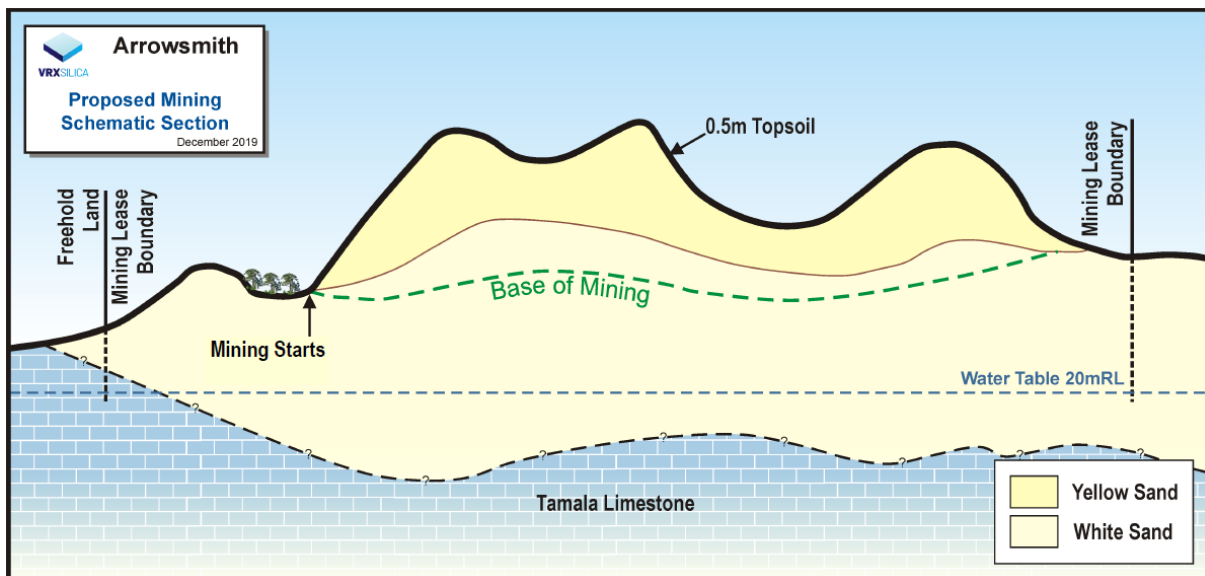


Figure 3: Indicative cross section of the mine area

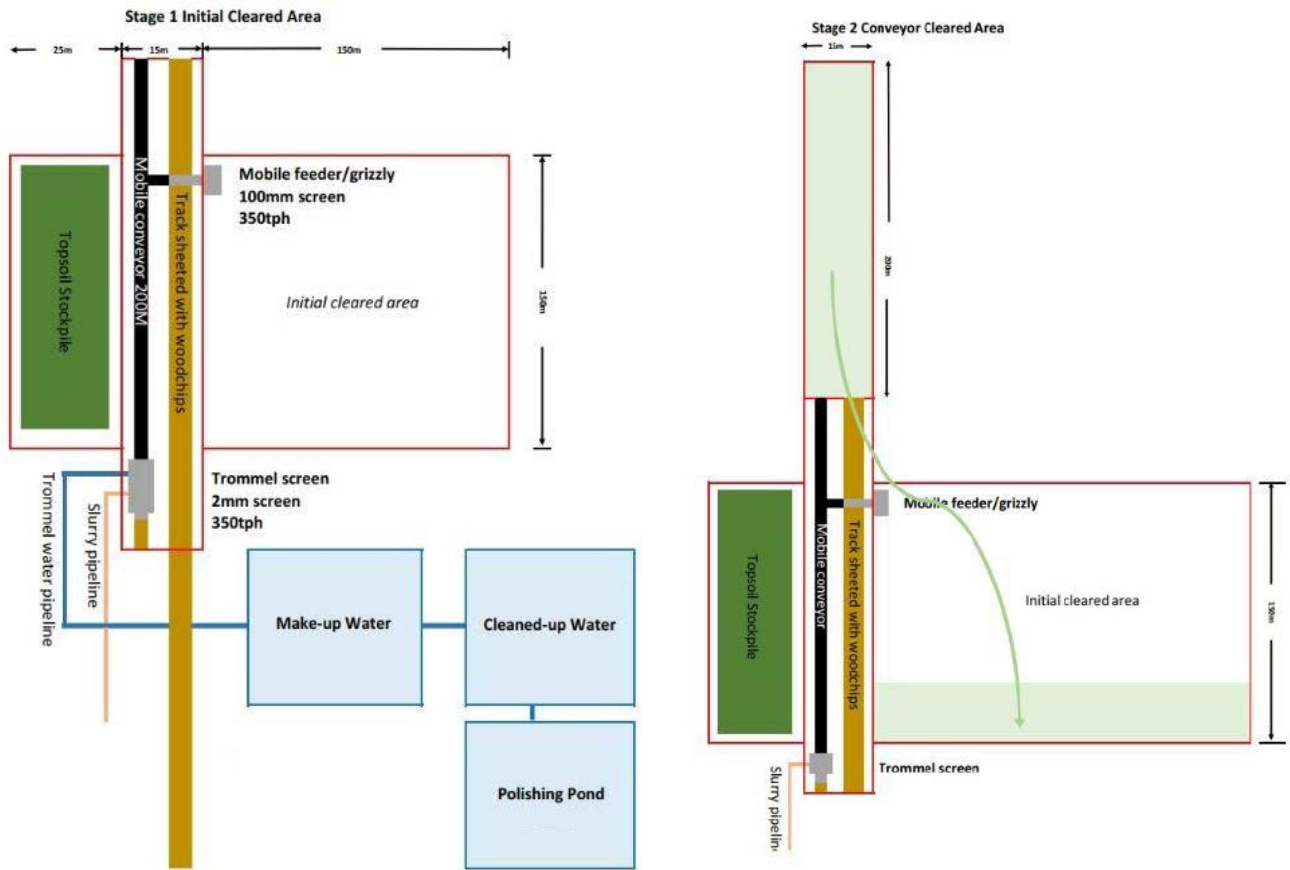


Figure 4: Stage 1 and 2 of the mining process



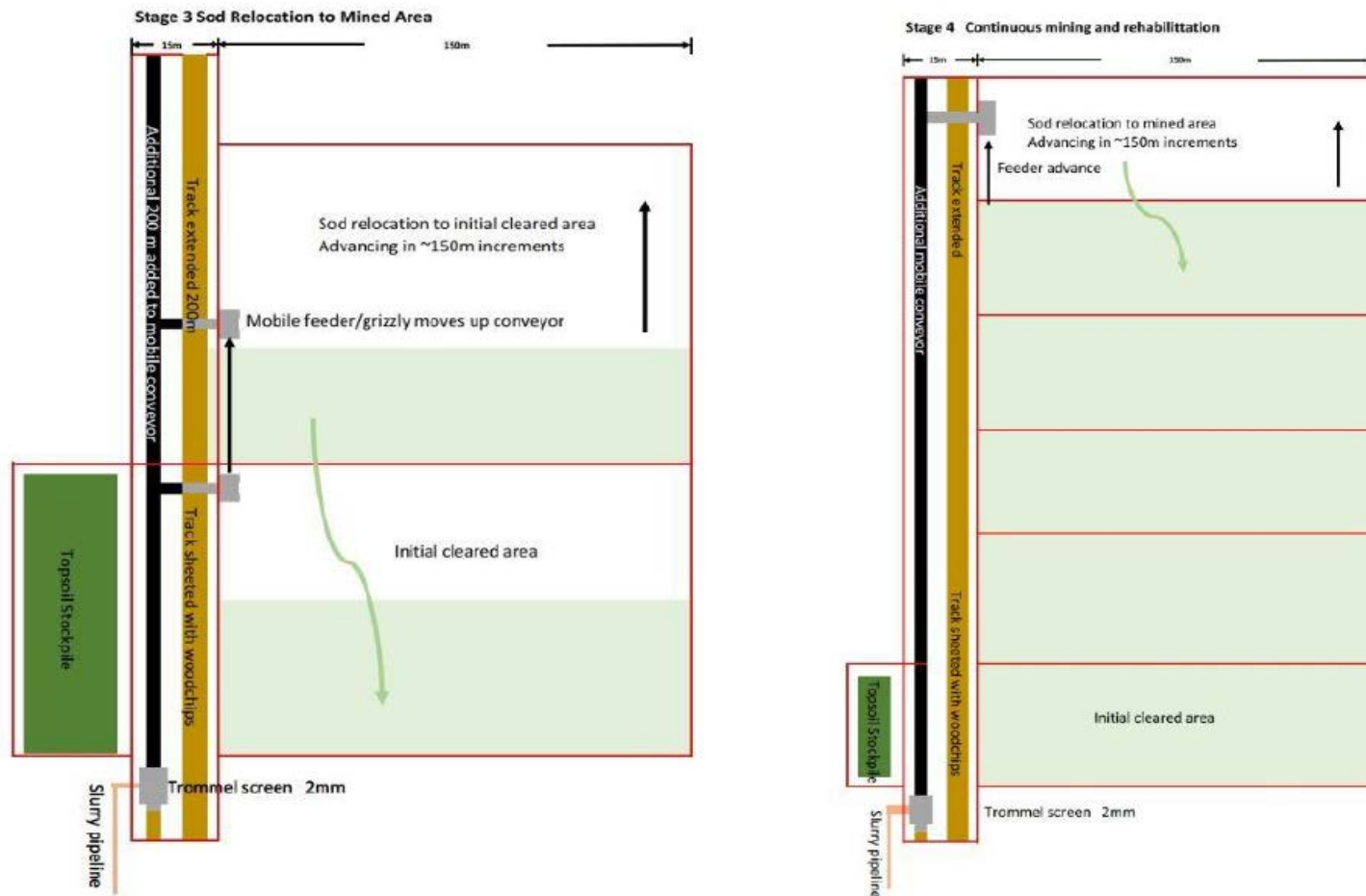


Figure 5: Stage 3 and 4 of the mining process



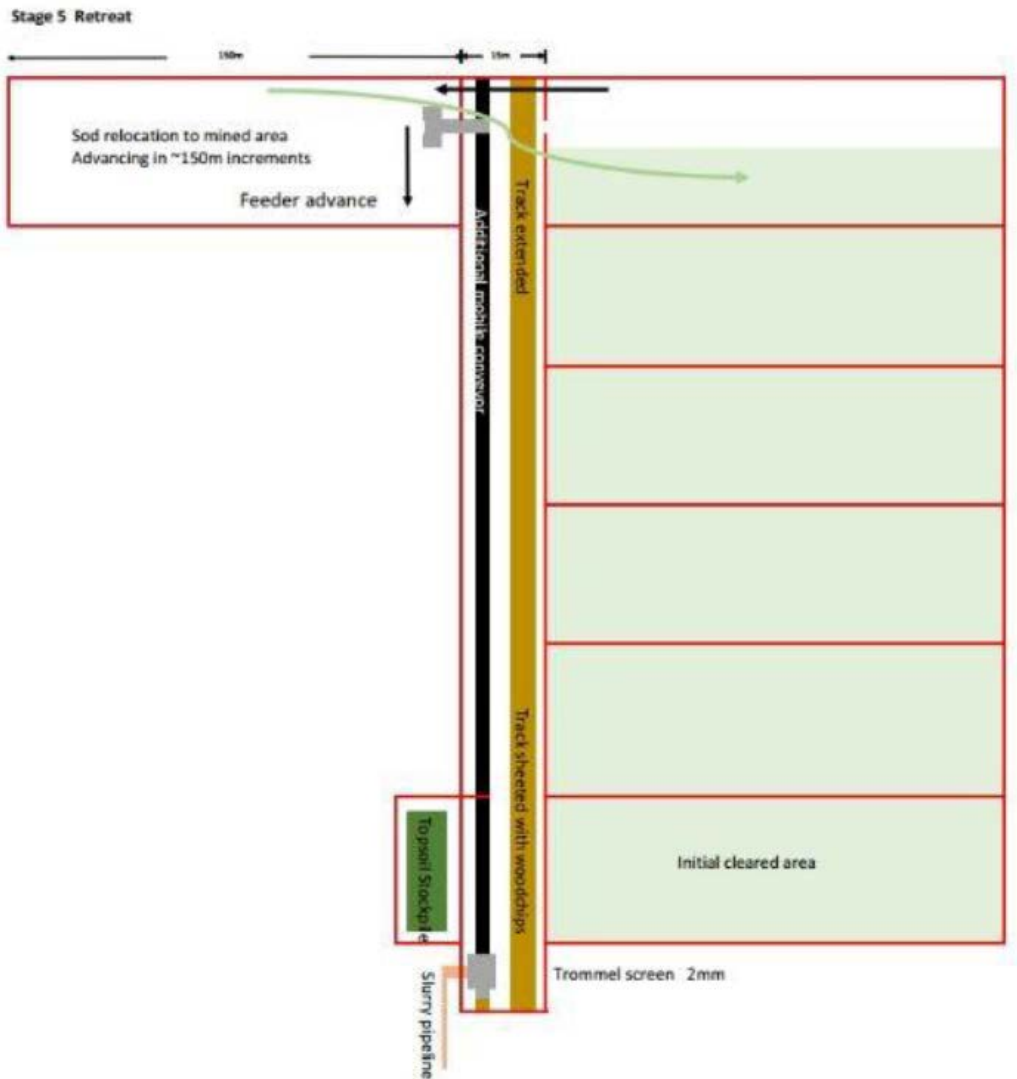


Figure 6: Stage 5 of the mining process



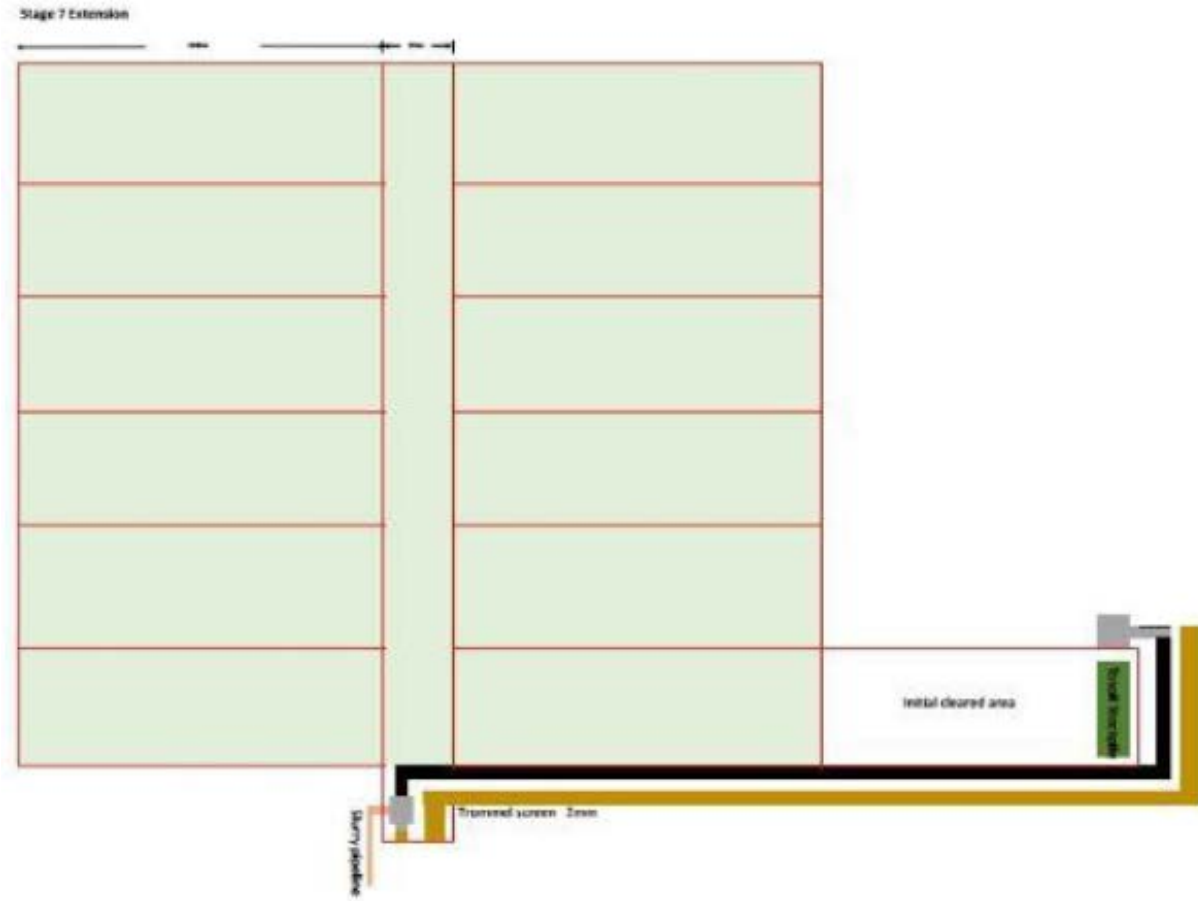
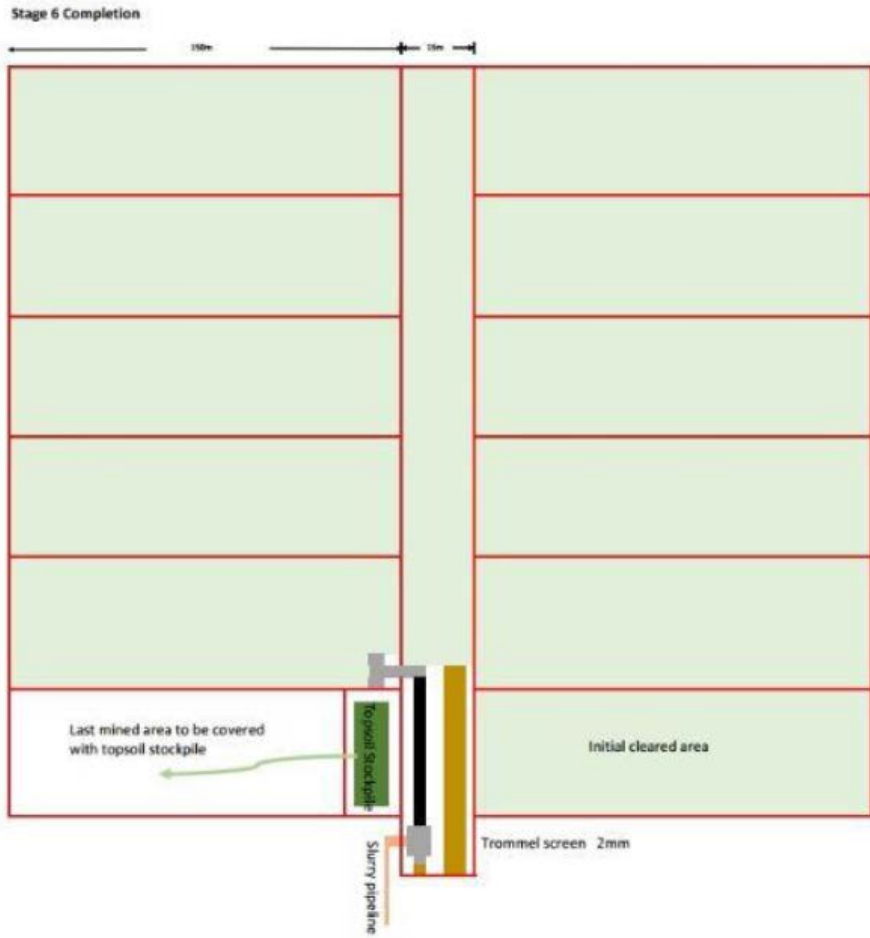


Figure 7: Stage 6 and stage 7 of the mining process



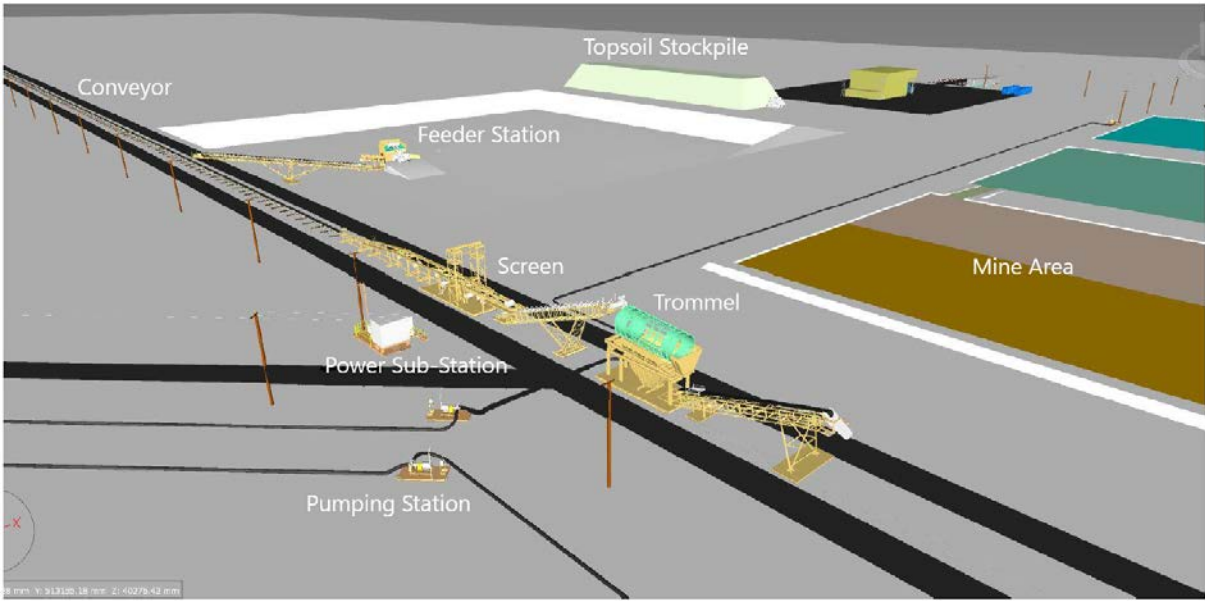


Figure 8: General arrangement of the Mine Feed Plant



Figure 9: Process Plant indicative layout

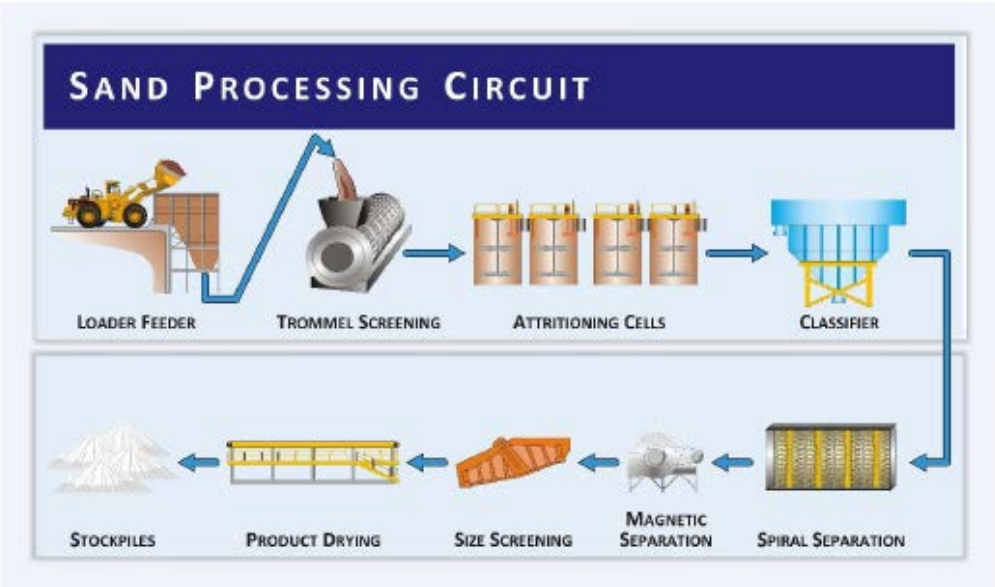


Figure 10: Silica sand processing flow chart

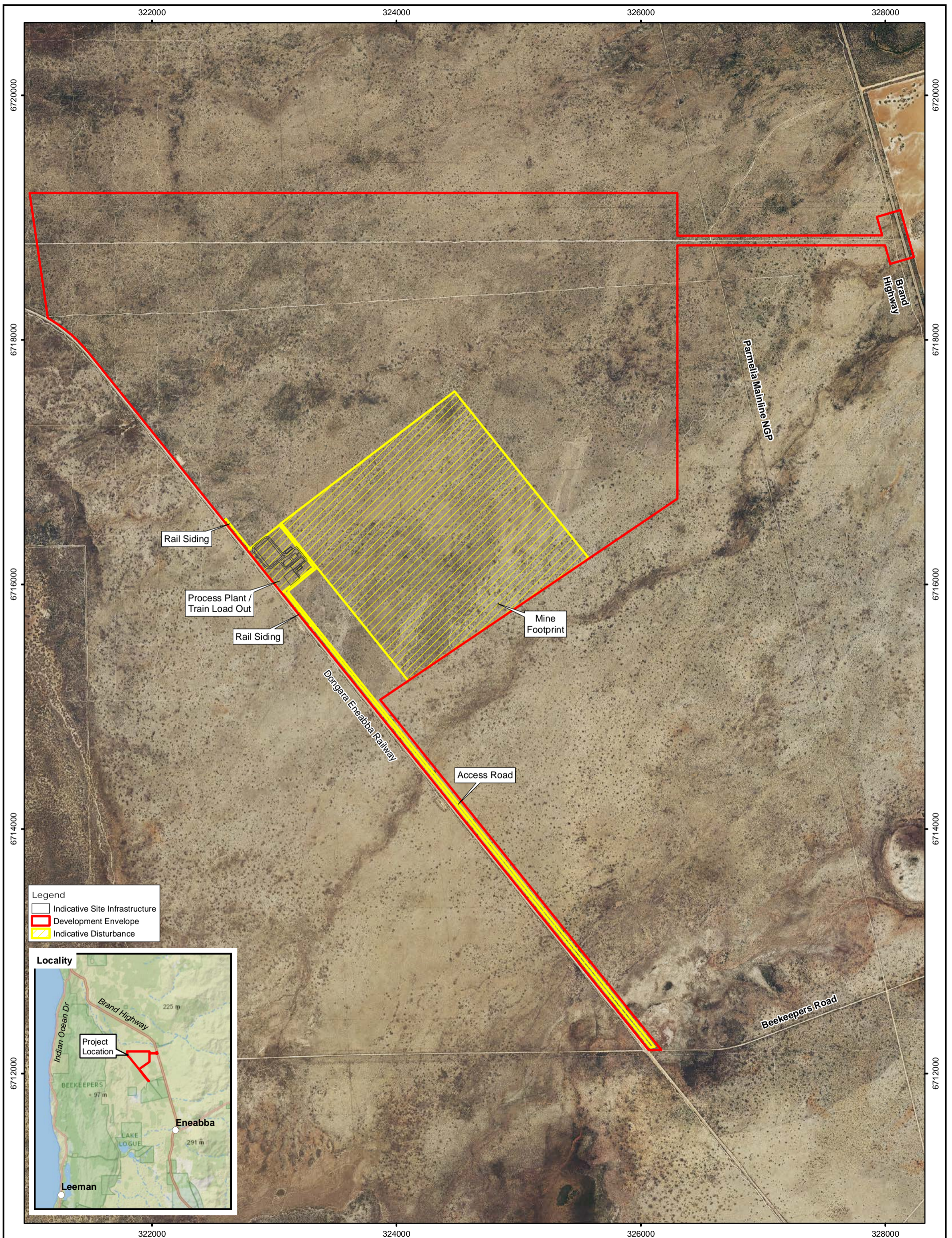






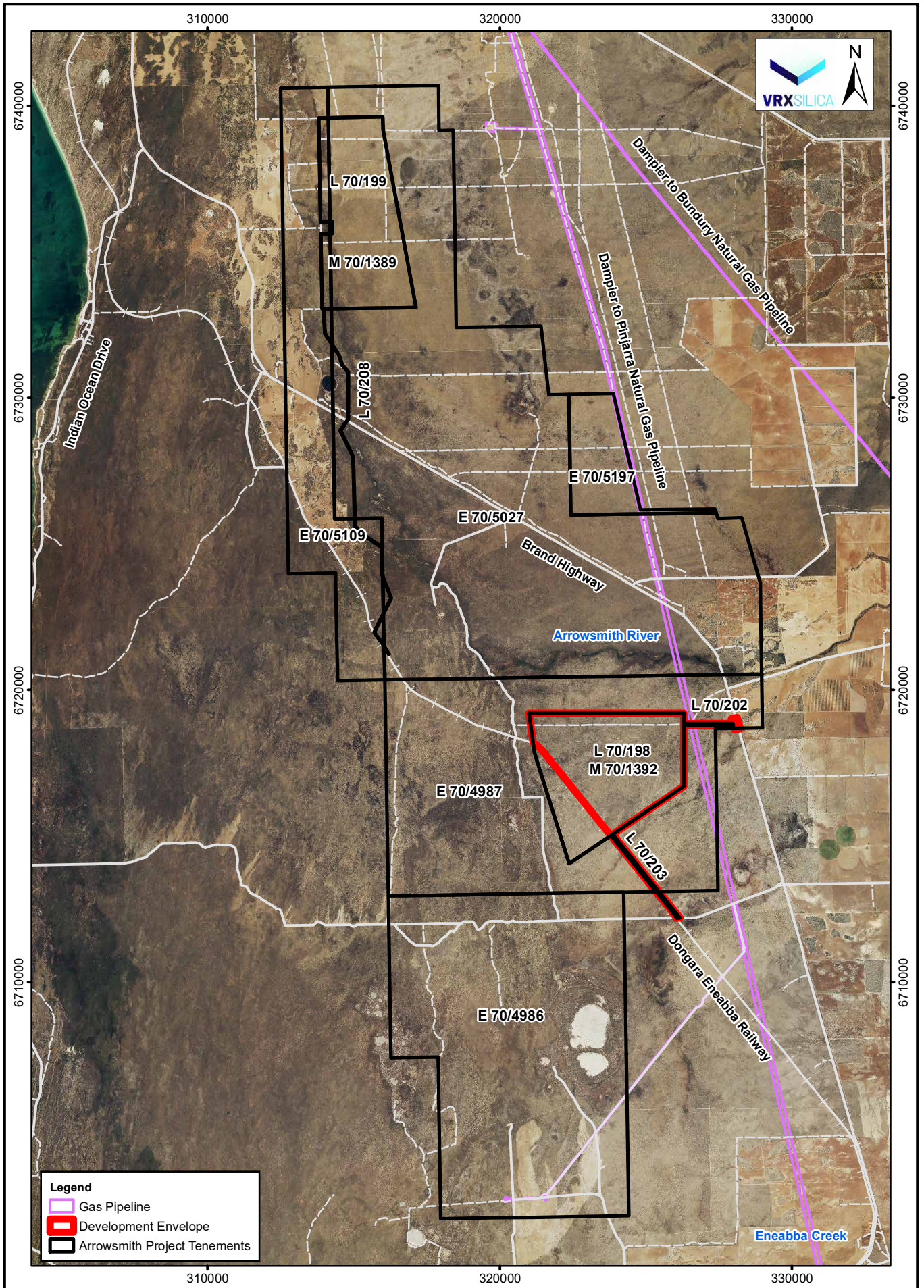
Image: Esri 	Client: 	 Scale: 1:27,500 MGA94 (Zone 50) CAD Ref: a2602_f42_02 Date: Aug 2021 Rev: B A3	 28 Central Road, Kalamunda WA 6076 - Tel: 9257 1625 - Fax: 9257 1640 Author: E M Mattiske MCPL Ref: Drawn: CAD Resources - www.cadresources.com.au Tel: (08) 9246 3242 - Fax (08) 9246 3202	Arrowsmith Central Project Approx. Disturbance Footprint	Figure: 11
--	--	--	--	---	----------------------

Figure 11: Development Envelope and Disturbance Footprint of the Proposed Action



Legend

- Gas Pipeline
- Development Envelope
- Arrowsmith Project Tenements

0 4 km
 Scale: 1:175,000
 MGA94 (Zone 50)
 CAD Ref: a2602_f23_02
 Date: April 2021

Mattiske Consulting Pty Ltd
 28 Central Road, Kalamunda WA 6076 ~ Tel: 9257 1625 ~ Fax: 9257 1640
 Author: E M Mattiske MCPL Ref: VRX2101/000/21
 Drawn: CAD Resources ~ www.cadresources.com.au
 Tel: (08) 9246 3242 ~ Fax (08) 9246 3202

Arrowsmith Central Project Tenements

Figure:
2

Source: Aerial Photography, Landgate (Nov. 2016), Tenements: DMIRS (24/06/2019)

Figure 12: Mattiske (2021) Survey Area and tenure

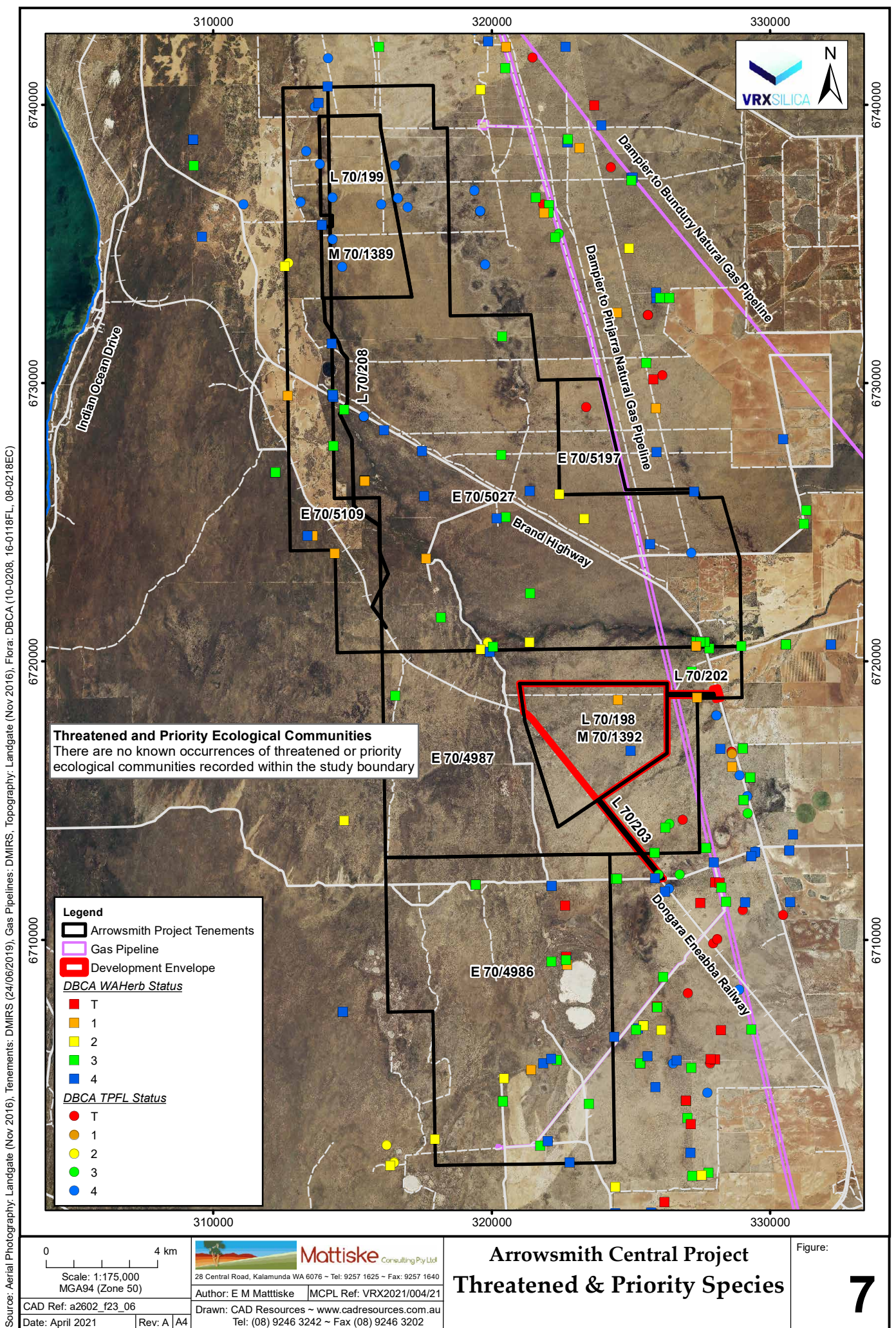


Figure 13: Significant flora records

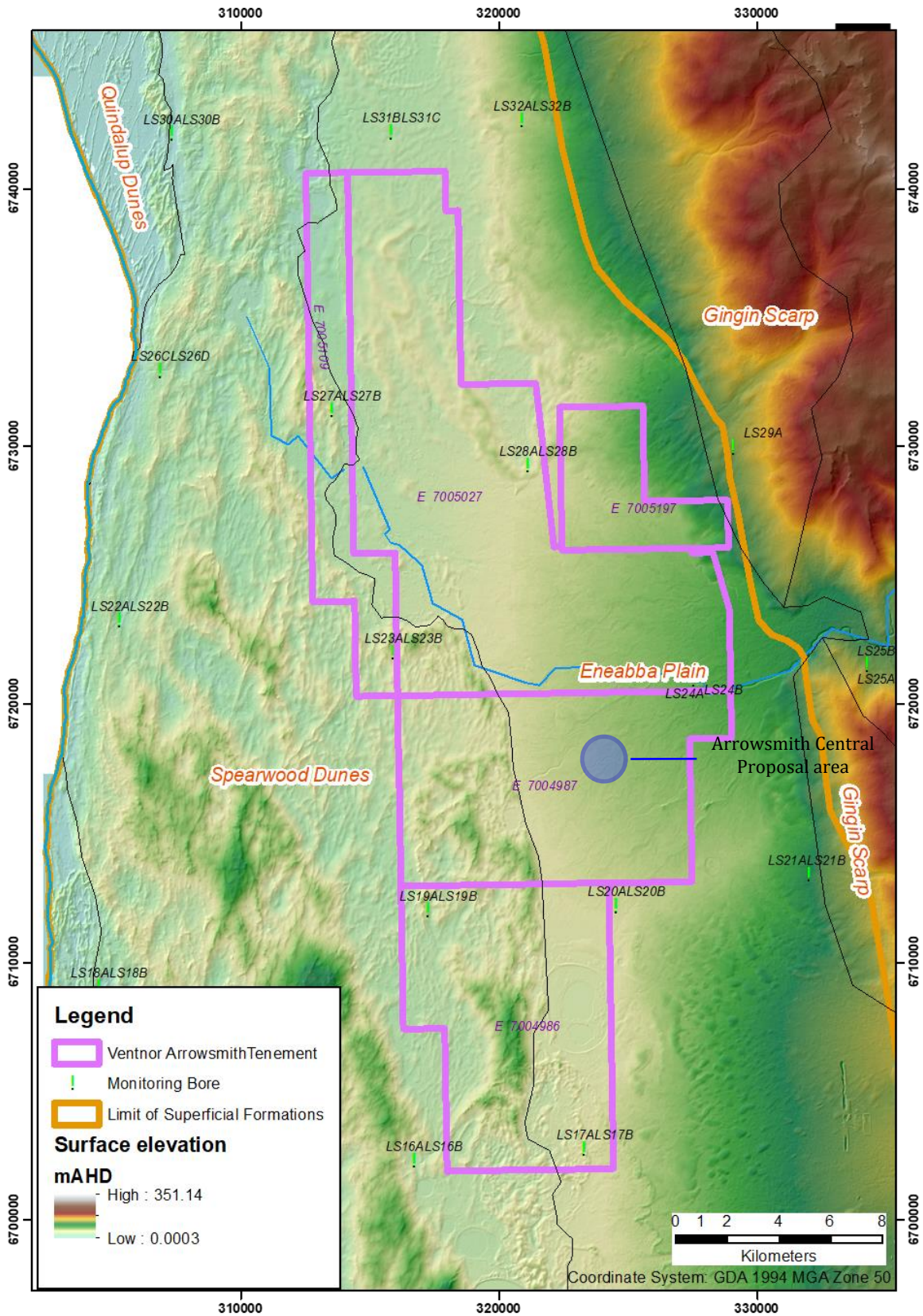


Figure 14: Hydrogeological assessment area (HydroConcept, 2019)

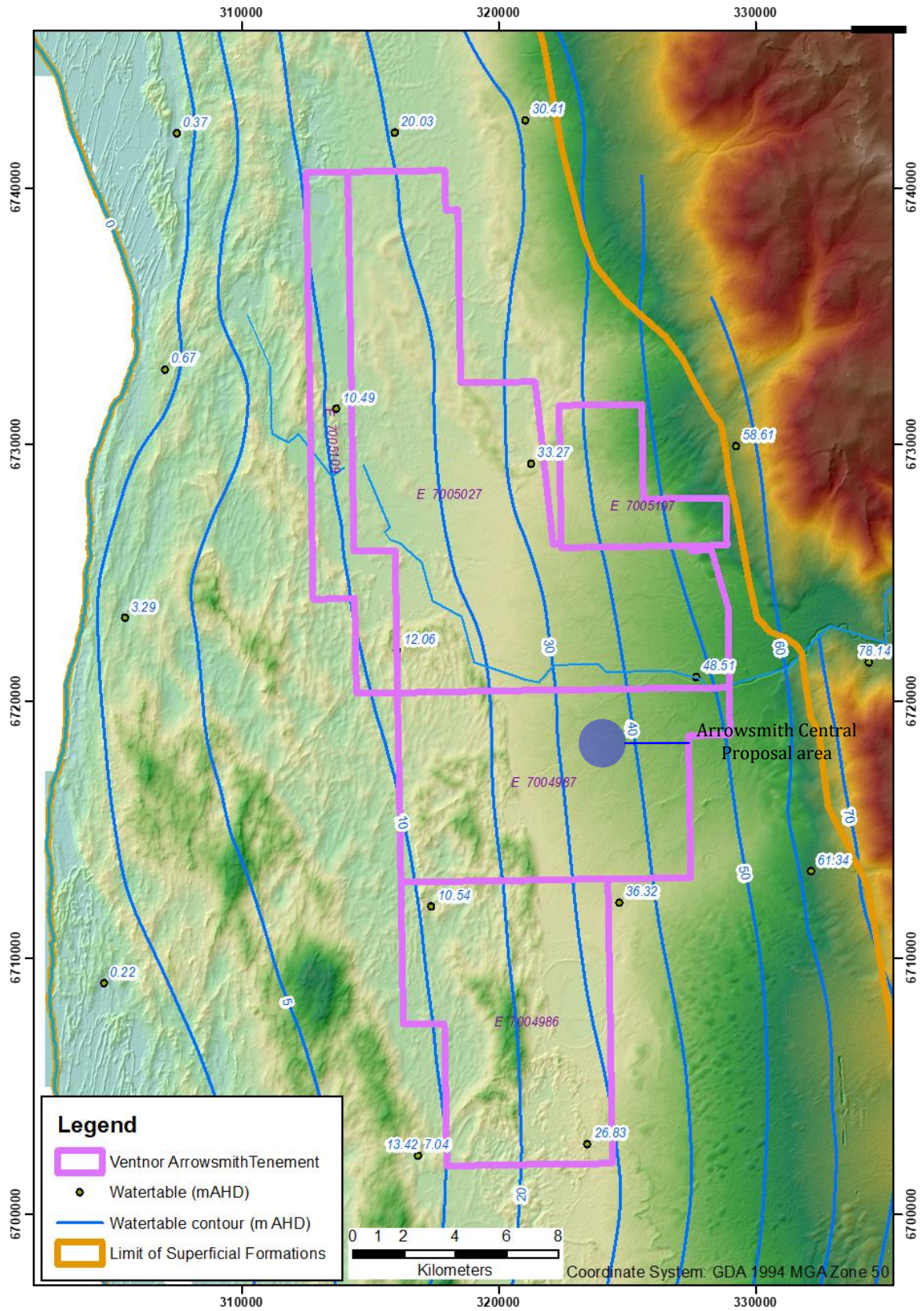


Figure 15: Water table across the Development Envelope (HydroConcept, 2019)

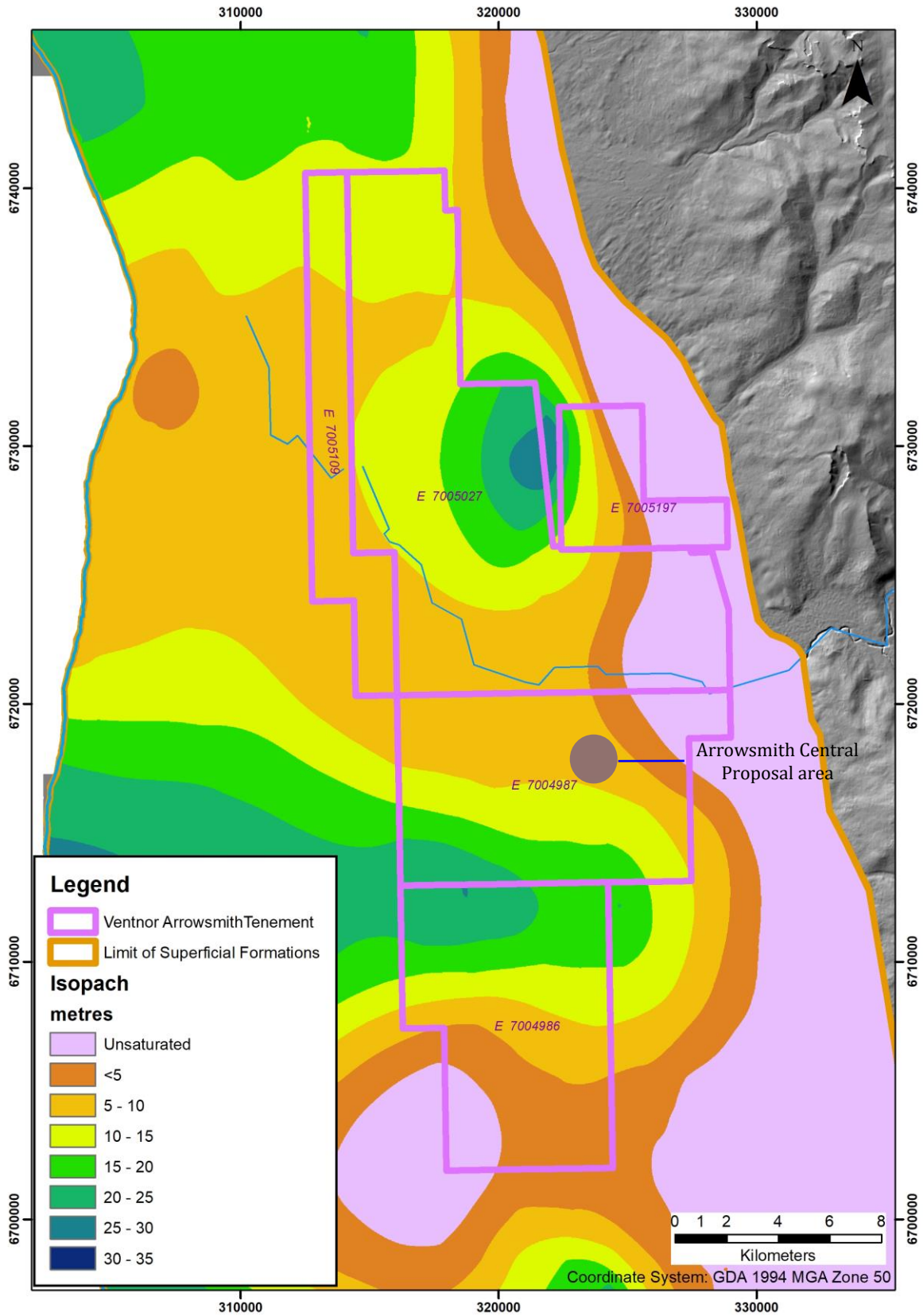
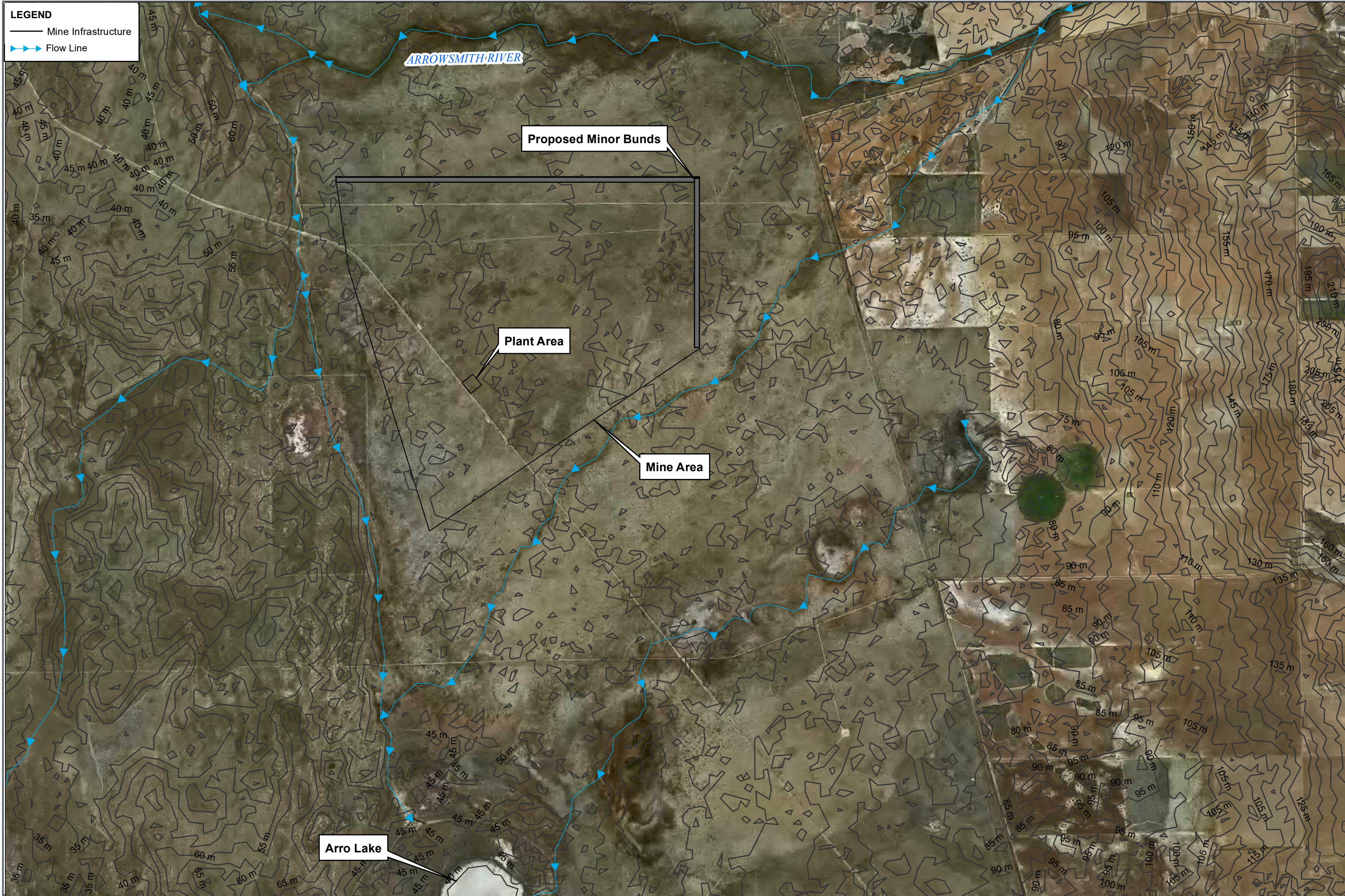
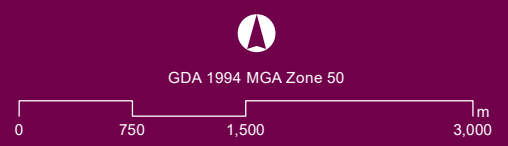


Figure 16: Isopach of the Superficial Aquifer beneath the Proposed Action (HydroConcept, 2019)



**Arrowsmith Central
Surface Water Management Plan**



Job Number: EWP19219.001
 Doc Number: 001
 Date: 09.01.20
 Scale: Map 1:50,000
 Created by: ER



Source: Orthophoto - Esri, DigitalGlobe, GeoEye, Earthstar, Geographics, CNES/Airbus DS, USDA, USGS, AeroGrid, IGN, IGP and the GIS User Community