

*The Element of **Possibility**™*

Anglesea Mine Rehabilitation & Closure Plan

EPBC Pre-Referral Meeting

Alcoa of Australia Ltd

July 20, 2017



Anglesea Overview



- Located approximately 130km SW of Melbourne CBD, adjacent to town of Anglesea in Victoria
- Commenced operations in 1969
- Shutdown operations 31 Aug 2015, impacting 82 employees
- Long term lease (to 2061) of 7,297 hectares of crown land created under the Mines (Aluminium Agreement) Act 1961
- Early handback of 6,510 hectares of lease area Feb 2017
- 143 hectares of freehold land
- Community Consultation Network since 2001 and Anglesea Heath Consultative Committee since 1997



Current State



- Alcoa continues to lease 787 hectares of crown land in order to meet rehabilitation and closure obligations.
- Technical studies being finalised to support the final Mine Rehabilitation and Closure Plan (MRCP) draft submission to DEDJTR - Earth Resources Regulation August 2017.
- Mine earthworks expected to commence Q4 2017
- Key approvals EPBC, CHMP, and MRCP.
- Power station asbestos removal scheduled for end Q4, 2017 with station demolition complete H1, 2018.



This map indicates approximate boundaries for informational purposes.

Existing Site

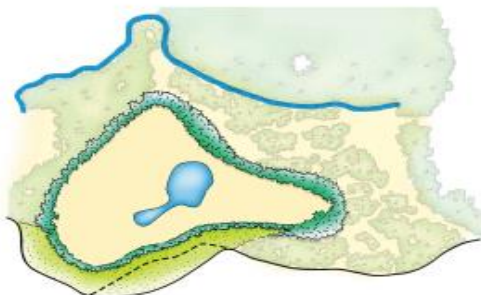


Key regulators

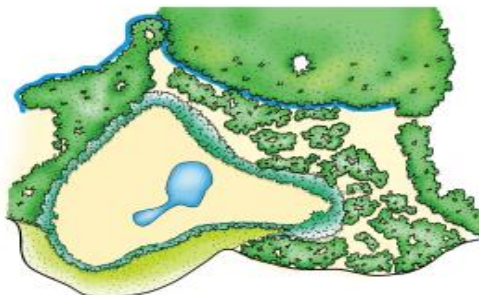
- Victorian EPA (power station)
- Department of Economic Development Jobs Transport Resources (mine)
- Department of Environment Land Water and Planning (water and land)

Rehabilitation and Closure – Key Moves

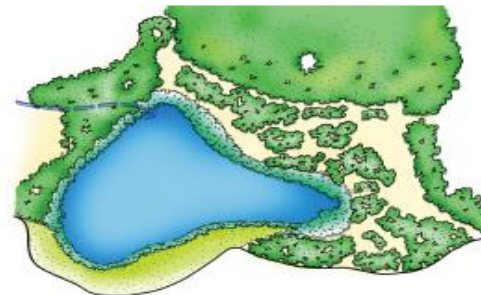
ANGLESEA MINE CLOSURE PLAN & REHABILITATION PLAN KEY MOVES



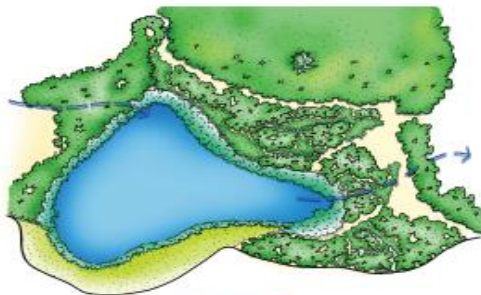
- 1 **SAFE AND STABLE**
- Relocate Coalmine Rd
 - Perform earthworks
 - Establish erosion controls



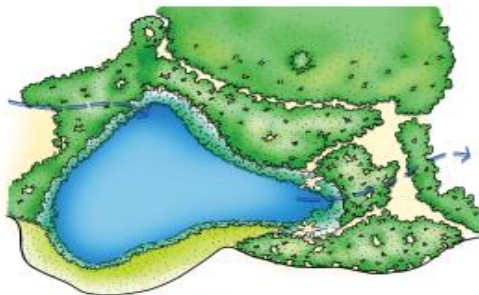
- 2 **PRESERVE**
- Minimise impact on Anglesea Heath
 - Preserve historical rehabilitation



- 3 **FILL**
- Redivert Salt Creek
 - Active water quality management
 - Fill above Anglesea River level



- 4 **CONSOLIDATE**
- Infill historical rehabilitation
 - Connect lake to Anglesea River



- 5 **PREPARE**
- Remove existing infrastructure
 - Prepare key areas for potential future alternative use



- 6 **HAND BACK**
- Regulator approval and handover
 - Provide access for potential future alternative use

Mine Rehabilitation and Closure Plan



- Safe and stable
- Extensive community consultation
- Early handback 6510 ha of Anglesea Heath
- Revegetate additional 90 Ha to return a total ~185 ha rehabilitation
- Water body connectivity to Anglesea River
- Potential future alternative uses and community access

South & West Wall Setback Issues

- Long term safe and stable
- Cultural Heritage Management
- EPBC implications
- Coal Mine Road relocation
- Barwon Water infrastructure



Area impacted by the mine rehabilitation – exempt under the long term mining Specified Area/MAAA and ‘grandfathered’ under EPBC Act

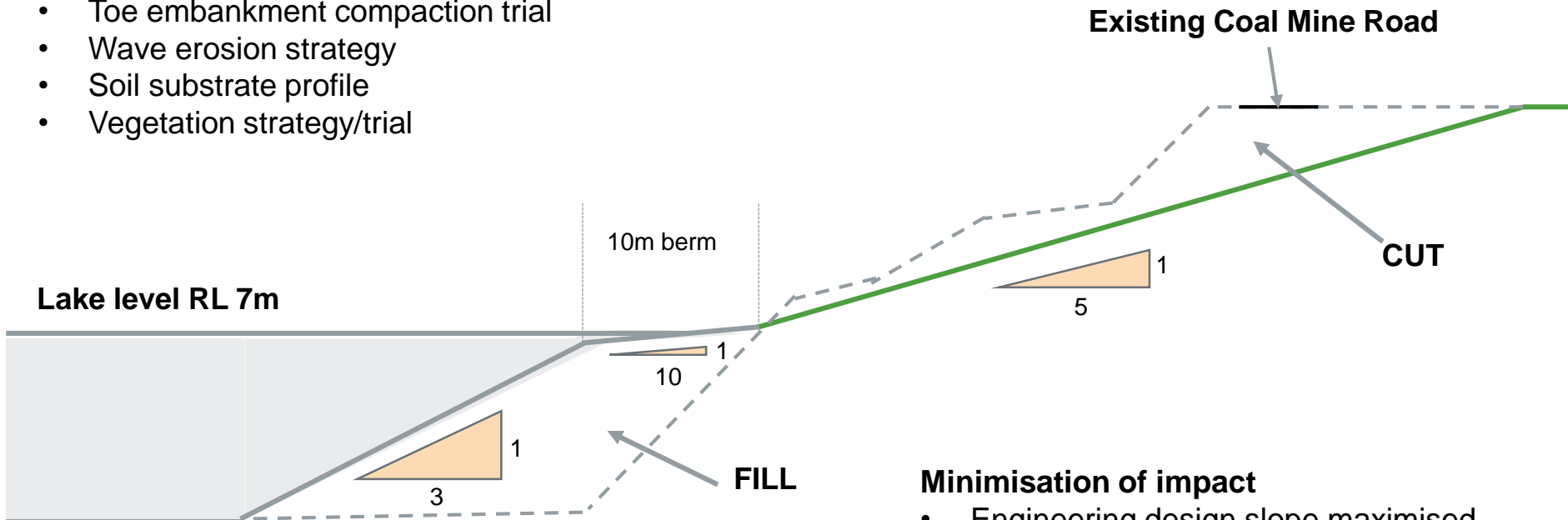


Area impacted by the mine rehabilitation – subject to State Native Vegetation & EPBC

South Wall Proposed Design

Final geotechnical design subject to:

- Toe embankment compaction trial
- Wave erosion strategy
- Soil substrate profile
- Vegetation strategy/trial



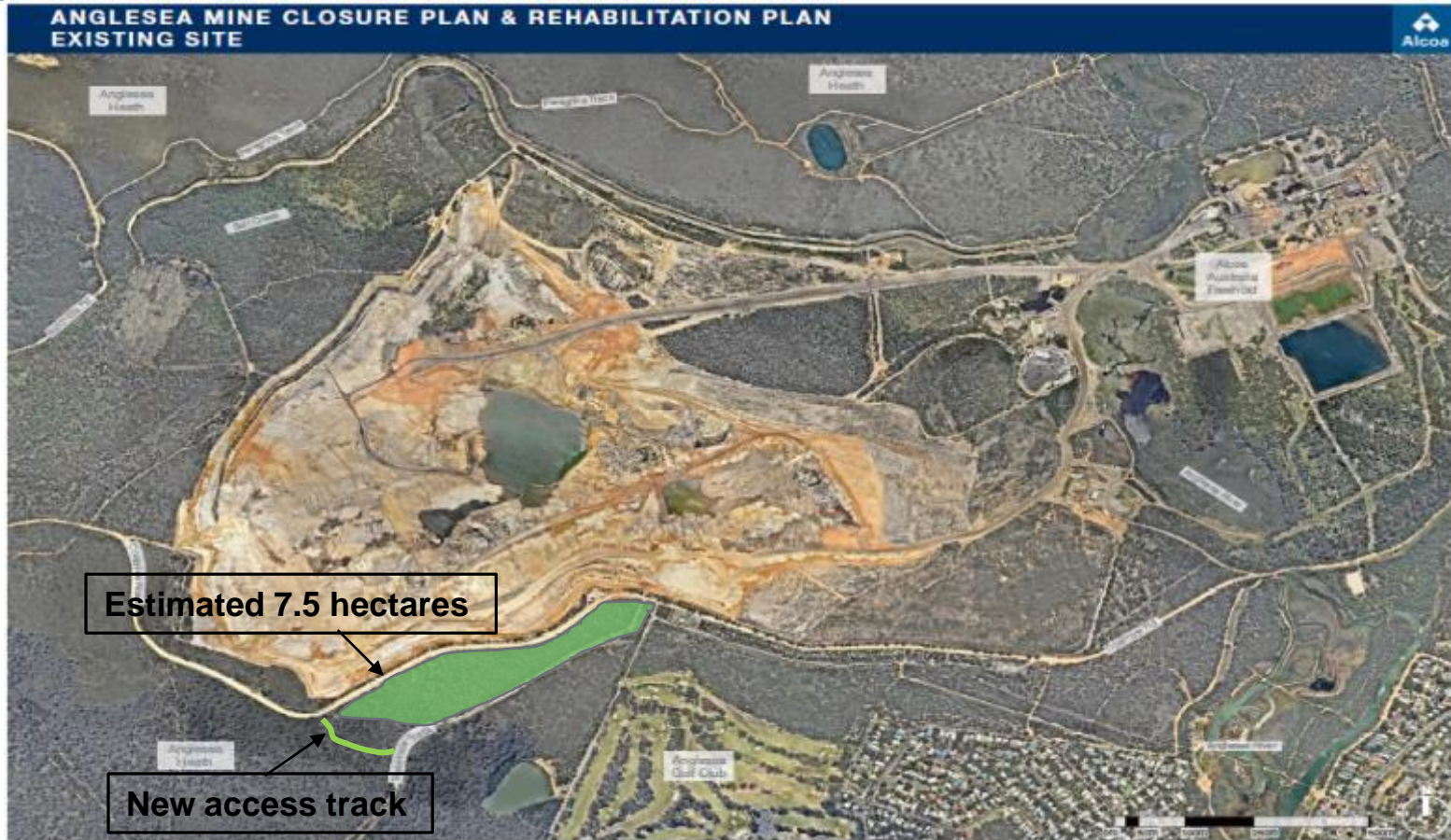
Minimisation of impact

- Engineering design slope maximised
- Re-use of top soil to generate habitat at 2:1
- Retain and re-use logs as habitat

Existing Rehabilitation Examples 2002 – 2013



Impacted Area subject to EPBC



Native Vegetation & EPBC Offsets:

- Coalmine Rd relocation to Messmate Track for South Wall works
- Impacted area subject to Native Vegetation and EPBC approximately 7.5 hectares
- Ongoing consultation with State for alignment on strategy and potential offsets
- Proposal for offsets to be by security provision of equivalent area currently under long term lease to Alcoa
- Proposal for offsets to be provided out of Bald Hills area of current remaining Alcoa lease
- Propose a Controlled Action referral for the impacted area



*The Element of **Possibility***[™]

