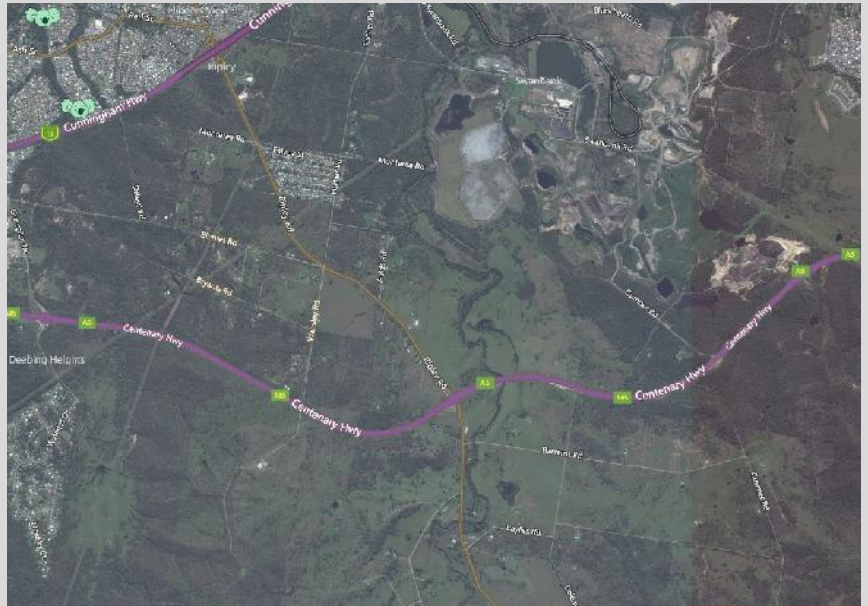


Koala Habitat Assessment Table

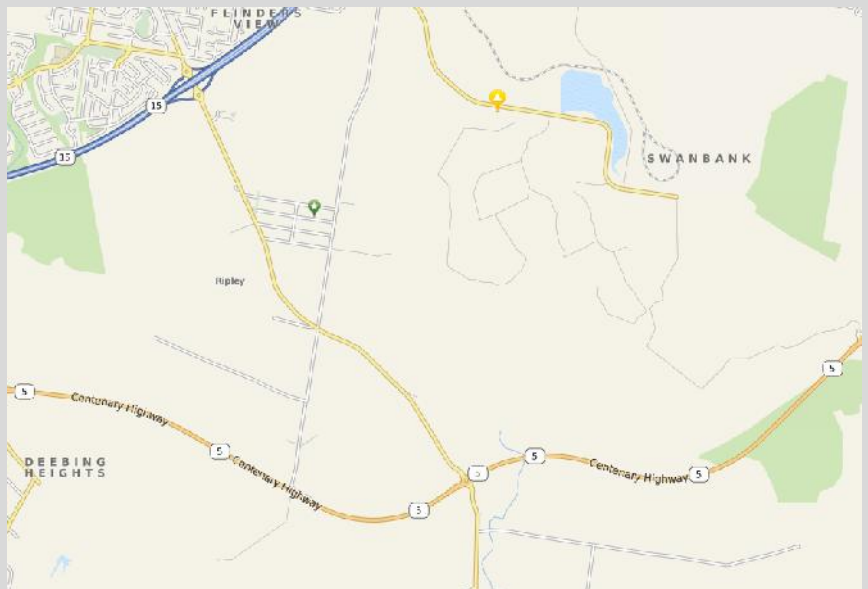
Attribute	Score	Comment
Koala Occurrence	+2 High	<p><u>Desktop</u> A Protected Matters Search with a 2 km radius of the site suggests there is potential for Koala occurrence in this area. A Wildlife Online search report using a 5 kilometre radius found 51 records of the Koala. In addition, Koalas are known to occur in the wider Ripley Valley area.</p> <p><u>On-ground</u> Evidence of Koala activity in the form of scats was recorded by Austecology and SHG during targeted surveys of the site.</p> <p>As there is evidence of one or more Koalas in this zone within the last two years, the 'Koala Occurrence' attribute has been given a score of +2 (high).</p>
Vegetation Composition	+ 2 High	<p><u>Desktop</u> The Queensland Government Regulated Vegetation Supporting Map (Regional Ecosystem V8.0) identifies the study area as containing remnant vegetation</p> <p><u>On-ground</u> The site contains known Koala Food Trees within the canopy</p> <p>As the site contains a forest or woodland with 2 or more known koala food tree species, the 'Vegetation Composition' attribute is given a score of 2 (high).</p>
Habitat connectivity	+1 Medium	<p>Connectivity from the overall site to surrounding vegetated areas is limited by the proximity of housing developments and agricultural lands (south), Ripley Arterial Road (west) Cunningham Highway (north) and the Swanbank Quarry (east). In addition, residential development has been and continues to be increasingly expanded within the surrounding area, further fragmenting the surrounding landscape. Plan 1 depicts the fragmented nature of the overall site location in relation major pieces of infrastructure inhibiting contiguous habitat.</p> <p>The site is fragmented from significant vegetation patches and has extremely limited connectivity to any areas of notable bushland. For these reasons, the site has been designated with a 'habitat connectivity' score of +1 (medium).</p>
Key existing threats	+0 low	<p><u>Desktop</u></p>

The **Australian Koala Foundation** Koala map (below) shows two Koala sightings in the near vicinity of the property, approximately 2km to the north.



AKF Koala Map

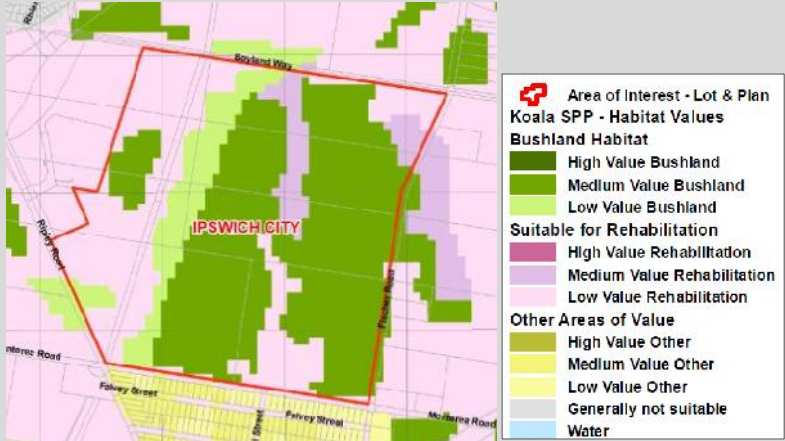
Koala Tracker is a crowd sourced National Koala sighting record. The Koala tracker map (below) shows one sick Koala in the Swanbank industrial area east of the site, and one healthy Koala sighted in the existing Ripley urban development area bordering the site to the west.



Koala Tracker Map

On-ground

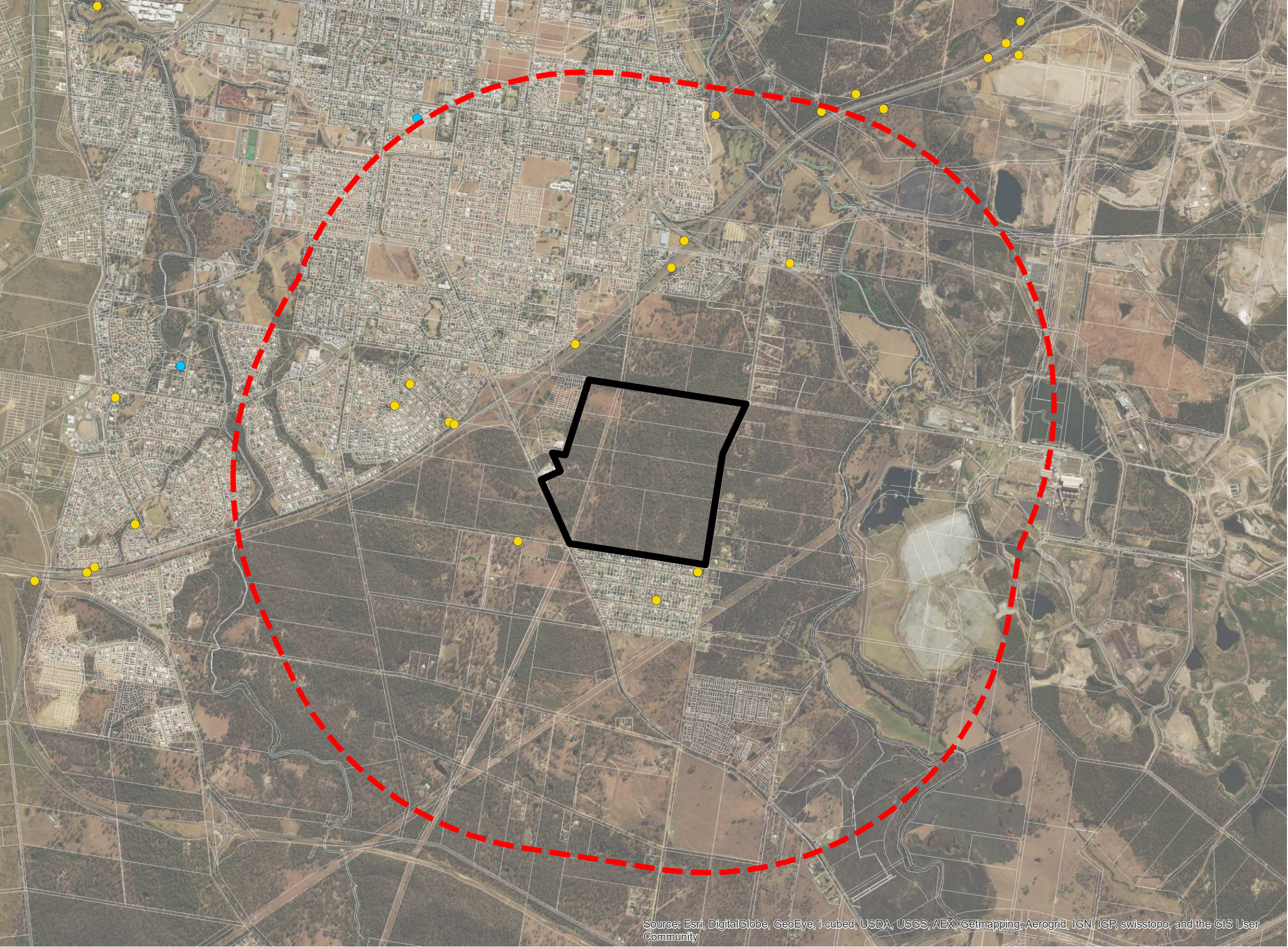
The high level of vehicle use in the surrounding area and the expansion of residential development bringing with it an increased number of

		<p>dogs and cars present significant threats of injury and death to Koalas. As surrounding residential development expands, these threats are likely to increase in scale and intensity. Both dog and fox activity were recorded on-site during site surveys.</p> <p>Koala Hospital Data</p> <p>Data showing the number of deaths or injuries to Koalas in the immediate vicinity (2km) of the site was assessed from both the Daisy Hill and Moggill Koala hospitals Records reported 13 incidents in which hospitalisation for the Koala was required. 13 incidents should be considered a high number of Koala hospitalisations. It is for these reasons the site is considered to score a 0 in this category(Plan 1).</p> <p>As there is strong evidence of Koala mortality factors in the study area and low evidence of Koala activity in this zone, the ‘Key Existing Threats’ attribute has been given a score of +0 (low).</p>
Recovery value	+0 low	<p>The vegetation on the referral site is unlikely to be important in achieving the Interim Recovery Objectives for the coastal context given its foundation on the ability to protect and conserve large connected areas of Koala habitat. Koala Context Attributes listed under Interim Recovery Objectives in Table 1 of the Guidelines for coastal areas are to:</p> <ol style="list-style-type: none"> 1) Protect and conserve large, connected areas of Koala habitat, particularly large connected areas that support koalas that are: <ul style="list-style-type: none">) of sufficient size to be genetically robust or operate as a viable sub-population, or;) are free of disease or have a low incidence of disease, or;) are breeding. 2) Maintain corridors and connective habitat that allow movement of koalas between large areas of habitat. <p>The site does not serve as a corridor or provide significant habitat connectivity due to fragmentation by arterial transport corridors and encroachment by urban development.</p> 

		<p>Koala Habitat Values Map</p> <p>Queensland's Koala Habitat Values Mapping (above, refer to Attachment 2 for full search results) identifies the site as containing Low and Medium Value Bushland Habitat and Low Value Bushland Habitat. The triggered Bushland Habitat value is completely isolated suggesting that this site is not connected to any broader Koala habitat areas and maintains limited value in terms of movement opportunities and connectivity values due to its position within an area of extensive rural and higher density urban development.</p> <p>Koala population is not considered to be genetically diverse from other SEQ Koala populations, they are not free of disease and no evidence of breeding has been found on the site.</p> <p>Overall, the severe fragmentation of the site to surrounding habitat areas and the lack of safe Koala movement opportunities to the site make it unlikely that the retention of the proposed development area will aid the Interim Recovery Objectives for the coastal context being achieved.</p> <p>It is generally understood that conservation and corridor areas provide most effective habitat value and connectivity when edge effects are minimised (Hill & Curran 2003). The subject site is intersected by arterial roads, does not adjoin a conservation area and is surrounded by rural, mining and urban development and so is likely to suffer from increasingly debilitating edge effects. As such, within the broader landscape the survey area is considered of negligible, if any, habitat and connectivity value for Koala dispersal, recovery and persistence.</p> <p>The 'Recovery Value' attribute has been given a score of 0 (low).</p>
Total	5	As the habitat score is more than 5, this zone is considered to provide Critical Habitat for the Koala

The site has been assessed as holding a koala habitat assessment score of five under the EBPC's Koala Habitat Assessment Tool matrix.

I. QLD KOALA HOSPITAL INCIDENT LOCATIONS



NOTES
This plan was prepared as a desktop assessment tool. The information on this plan is not suitable for any other purpose. Property dimensions, areas, numbers of lots and contours and other physical features shown have been compiled from existing information and may not have been verified by field survey. These may need verification if the development application is approved and development proceeds, and may change when a full survey is undertaken or in order to comply with development approval conditions. No reliance should be placed on the information on this plan for detailed design or for any financial dealings involving the land. Saunders Havill Group therefore disclaims any liability for any loss or damage whatsoever or howsoever incurred, arising from any party using or relying upon this plan for any purpose other than as a document prepared for the sole purpose of accompanying a development application and which may be subject to alteration beyond the control of the Saunders Havill Group. Unless a development approval states otherwise, this is not an approved plan.

Layer Sources: QLD GIS Layers (QLD Gov. Information Service 2017), Aerial (ESRI 2017)

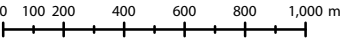
* This note is an integral part of this plan/data. Reproduction of this plan or any part of it without this note being included in full will render the information shown on such reproduction invalid and not suitable for use.

LEGEND

- Referral area
- Qld DCDB
- 2 km radius from Referral area
- Koala Incident Record (Daisy Hill Centre)
- Koala Incident Record (Moggill Hospital)

Issue	Date	Description	Drawn	Checked
A	25/10/2017	Preliminary	TC	MS

Transverse Mercator | GDA 1994 | Zone 56 | 1:25,000 @ A3



Source: Esri, DigitalGlobe, GeoEye, i-cubed, USDA, USGS, AEX, Getmapping, Aerogrid, IGN, IGP, swisstopo, and the GIS User Community